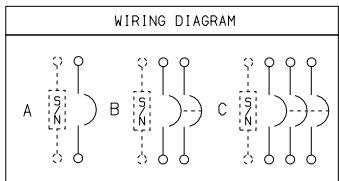


**FA 100 RB
NEMA/EEMAC TYPE 3R**

DUAL DIMENSIONS: INCHES
MILLIMETERS

NOTES:
FINISH - GRAY BAKED ENAMEL ELECTRODEPOSITED OVER CLEANED PHOSPHATIZED STEEL.
UL LISTED - FILE E-136861 CSA CERTIFIED - FILE #LL89067.
SUITABLE FOR USE AS SERVICE EQUIPMENT WHEN NEUTRAL ASSEMBLY IS INSTALLED.
NEUTRAL - INSULATED GROUNDABLE.
THE SHORT CIRCUIT CURRENT RATING OF THIS ENCLOSED CIRCUIT BREAKER IS EQUAL TO THE INTERRUPTING RATING, AT THE SUPPLY VOLTAGE MARKED ON THE CIRCUIT BREAKER INSTALLED.

HUB NOTE: TOP OF NEMA/EEMAC TYPE 3R ENCLOSURE HAS PROVISIONS FOR MAXIMUM 2.50 BOLT-ON HUB.
64



CIRCUIT BREAKER CAT. NO. PREFIX	AMPERE RATING	CONDUCTORS PER PHASE	WIRE SIZE (AWG)		TYPE
			MAX.	MIN.	
FAL, FHL	15-30A	1	#4	#12	AL
			#4	#14	CU
	35-100A	1	#1/0	#12	AL
FCL	15-30A	1	#10	#14	CU
			#1	#12	AL
	35-100A	1	#3	#14	CU

SYMBOL	CONDUIT SIZE		DIAMETER	
	IN	MM	IN	MM
A	.50	13	.88	22
B	.75	19	1.13	29
C	1.00	25	1.38	35
D	1.25	32	1.75	45
E	1.50	38	2.00	51
F	2.00	51	2.50	64

CATALOG NUMBER	MAXIMUM AMPERE RATING	NUMBER OF TERMINALS	CONDUCTORS PER PHASE	WIRE SIZE (AWG)		TYPE
				MAX.	MIN.	
SN100FA	100A	2	1	#1/0	#12	AL
				#1/0	#14	CU
PK0GTA2	-	2	1	#2/0	#6	AL
				#2/0	#10	CU

CIRCUIT BREAKER CATALOG NO. PREFIX	WIRING DIAG.	AMPERE RATING	UL LISTED INTERRUPTING RATING							FEDERAL SPECS. W-C-375B/GEN	
			RMS SYMMETRICAL AMPERES								
			AC VOLTAGE				DC VOLTAGE				
			120	240	480Y/277	480	600	125	250	500	
FAL 240V	A	15-100	10K	-	-	-	-	5K	-	-	11A
	B	15-100	10K	10K	-	-	-	5K	5K	-	11B, 12B
	C	15-100	10K	10K	-	-	-	5K	5K	-	11B, 12B
FAL 480V	A	15-100	25K	18K	18K	-	-	10K	-	-	11A, 12A, 13A
	B	15-100	25K	25K	18K	18K	-	10K	10K	-	13B
	C	15-100	25K	25K	18K	18K	-	10K	10K	-	13B
FAL 600V	B	15-100	25K	25K	18K	18K	14K	10K	10K	-	18A
	C	15-100	25K	25K	18K	18K	14K	10K	10K	-	18A
FHL	A	15-30	65K	65K	65K	-	-	10K	-	-	13A
	A	35-100	65K	25K	25K	-	-	10K	-	-	13A
	B	15-100	65K	65K	25K	25K	18K	10K	10K	-	22A
FHL-DC	C	-	-	-	-	-	-	-	-	20K	-
	C	-	-	-	-	-	-	-	-	-	-
FCL	B	15-100	100K	100K	65K	65K	-	-	-	-	22A
	C	15-100	100K	100K	65K	65K	-	-	-	-	22A

CIRCUIT BREAKER ENCLOSURES
15-100 AMPERE
NEMA/EEMAC TYPE 3R RAINPROOF ENCLOSURE



DWG. NO. 3062