

LOC	DIST	REVISIONS						
GP	00	P	LTR	DESCRIPTION	DATE	DWN	APVD	
			5	REVISED	25MAR2013	CJV	MJP	
			6	CORRECTED VIEWABLE	28MAR2013	CJV	MJP	
			7	REVISED	16AUG2013	BL	AC	
			8	REVISED THE DRAFT	21OCT2014	TX	JY	

D

C

B

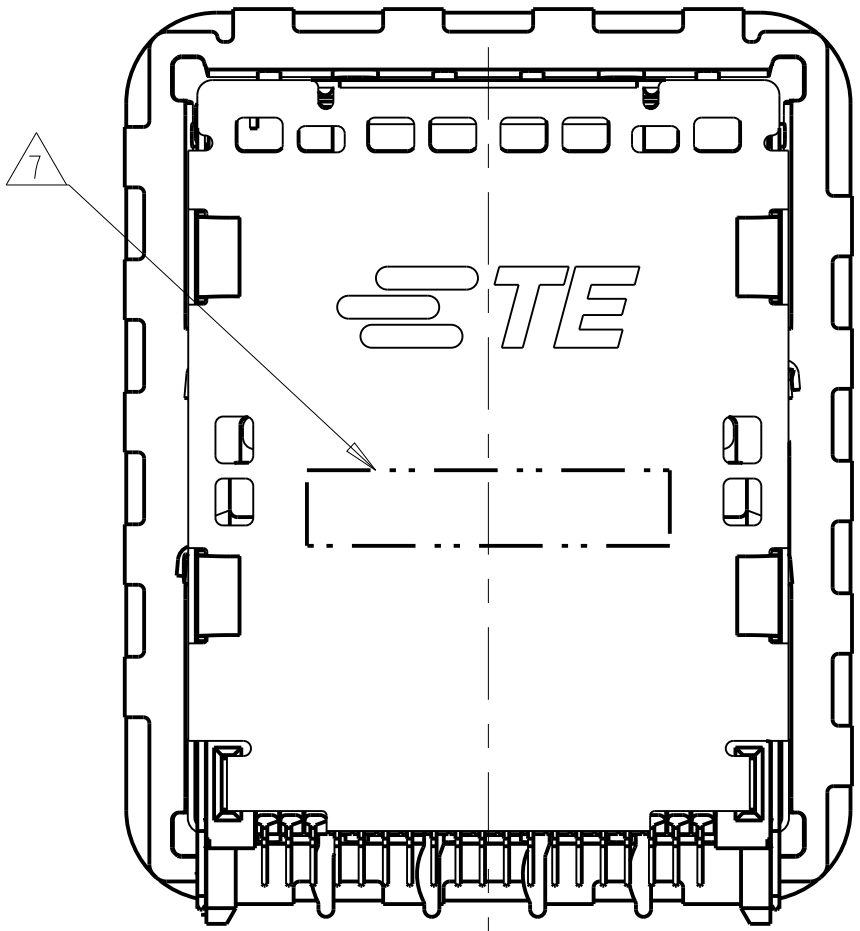
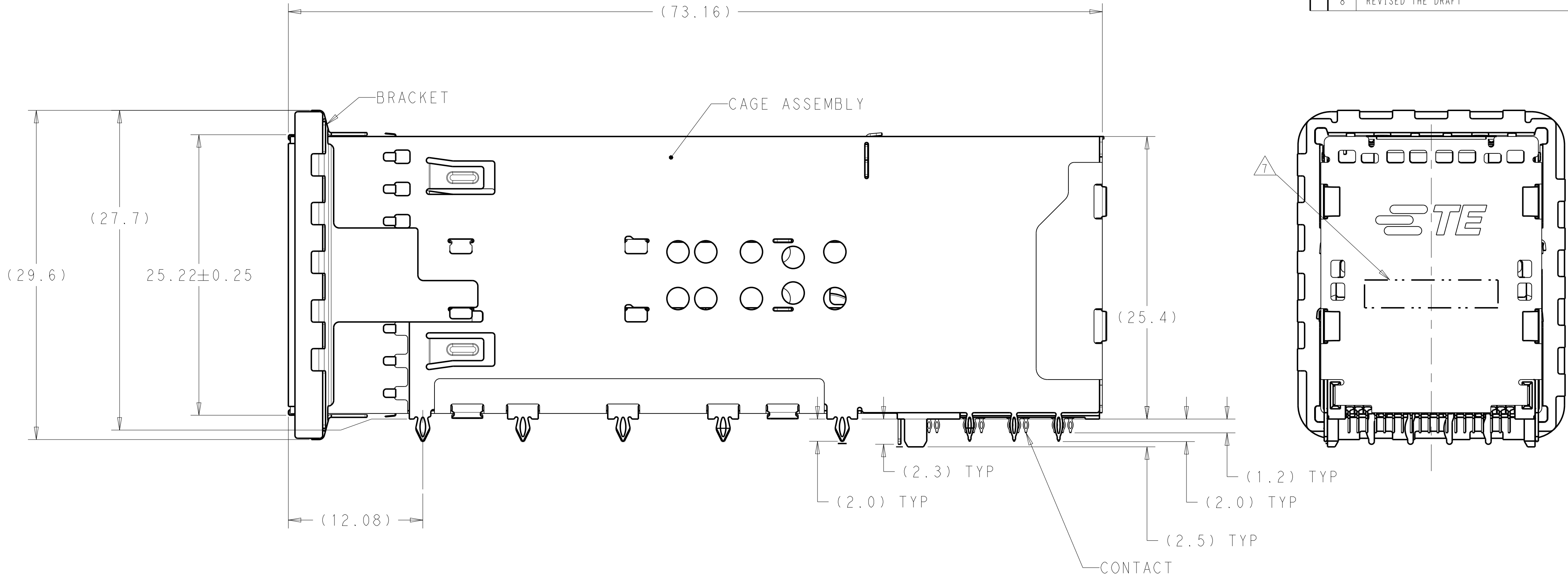
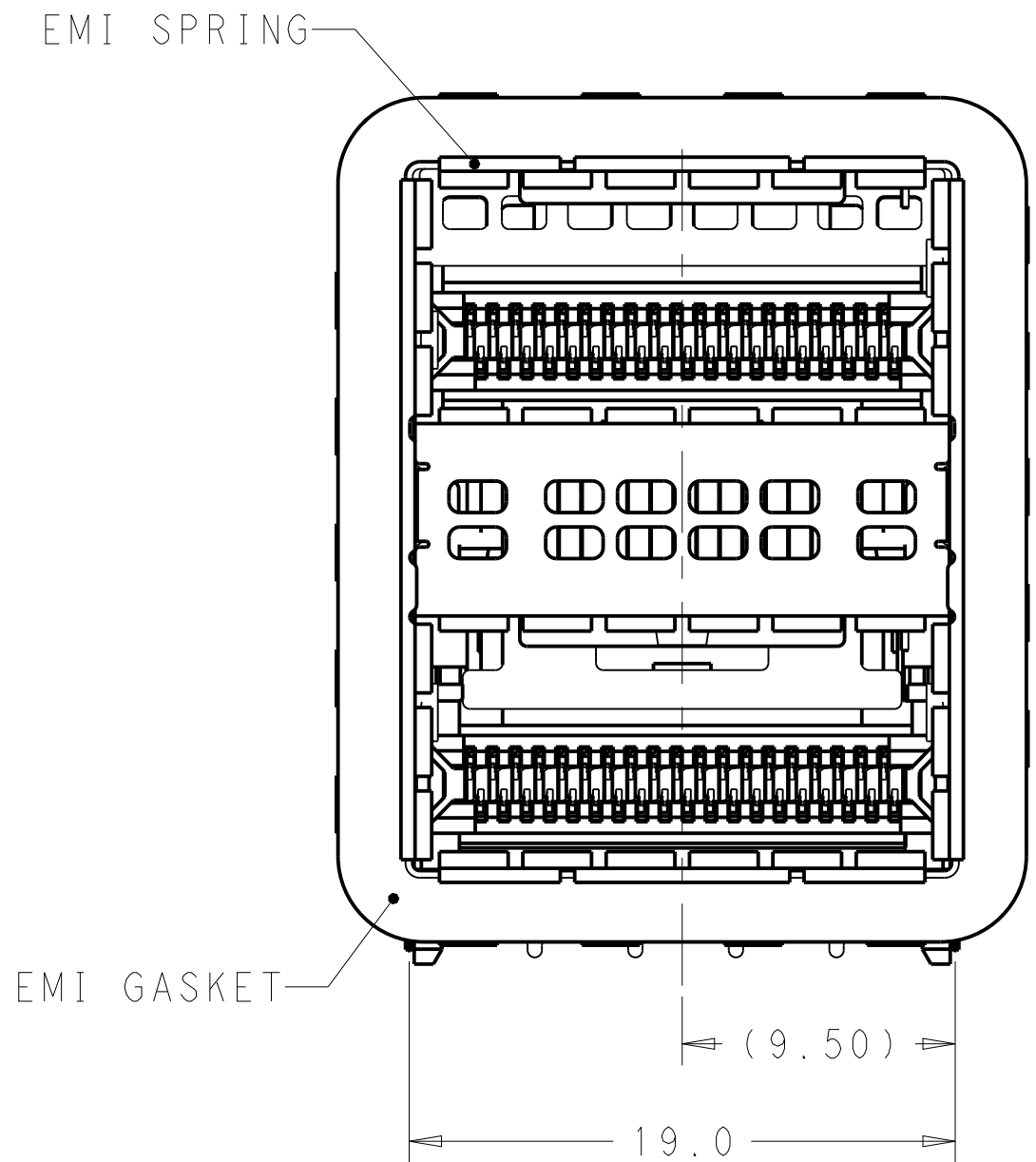
A

D

C

B

A



1. MATERIALS:
CAGE ASSEMBLY- NICKEL SILVER ALLOY PER ASTM B 122.
BRACKET- STAINLESS STEEL.
EMI SPRING- COPPER ALLOY, NICKEL PLATED.
EMI GASKET- PLATED FILLED SILICONE WITH 94V-0.
HOUSING- POLYESTER LCP WITH 94V-0.
CHICKLET- POLYESTER LCP WITH 94V-0.
CONTACT- COPPER ALLOY.
LIGHTPIPE- POLYCARBONATE WITH 94V-0.

2 CONTACT FINISH: 0.76µm GOLD ON MATING END, 1.25µm TIN ON SOLDER TAIL, ALL OVER 1.27µm NICKEL.

3 DATUM AND BASIC DIMENSION ESTABLISHED BY CUSTOMER.

4. MINIMUM PCB THICKNESS OF 1.57.

5 THE ENTIRE AREA OF THE CONNECTOR FOOTPRINT, INDICATED BY THE DASHED LINE, TO BE CONSIDERED THE KEEPOUT AREA FOR COMPONENTS.

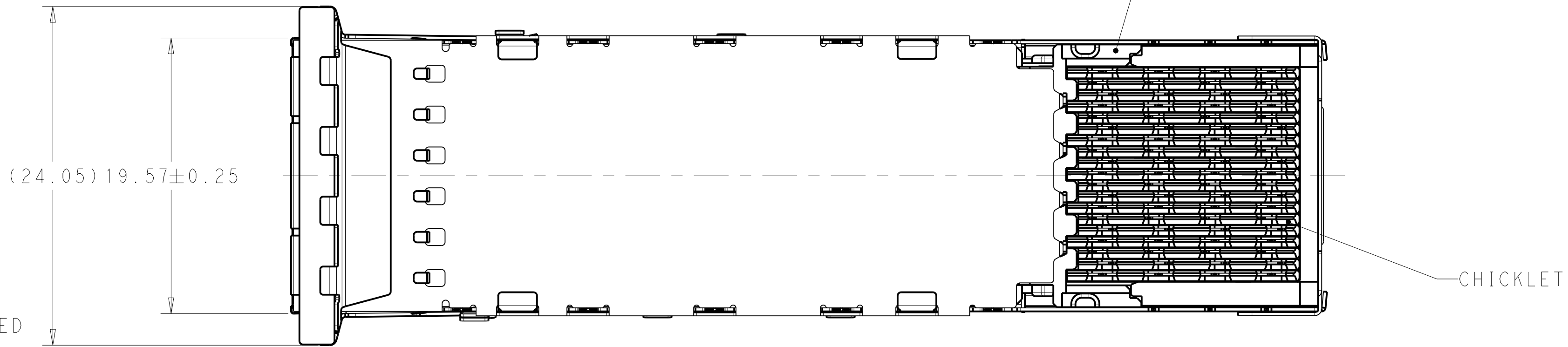
6 CROSS-HATCHED AREAS REPRESENT ZONES ON THE PCB THAT COME IN CONTACT WITH OR BE IN CLOSE PROXIMITY TO THE PLASTIC HOUSING OR THE CONNECTOR CAGE. INDICATED AREAS TO BE CONSIDERED TRACE FREE.

7 PART NUMBER AND DATE CODE MARKED IN APPROXIMATE AREA SHOWN.

8 THESE HOLES ARE OPTIONAL WHEN PINS ON BACK OF GAGE ARE REMOVED.

9 HATCHED AREA IS PLACEMENT ZONE FOR LED. LED SHOULD BE CENTERED WITHIN ZONE. RECOMMEND 0805 PACKAGE.

10 CONTACT FINISH: 0.08µm MINIMUM GOLD OVER 0.68µm PALLADIUM-NICKEL ON MATING END, 1.25µm MATT TIN ON SOLDER TAIL, ALL OVER 1.27µm NICKEL.



PRELIMINARY - NOT RELEASED FOR PRODUCTION

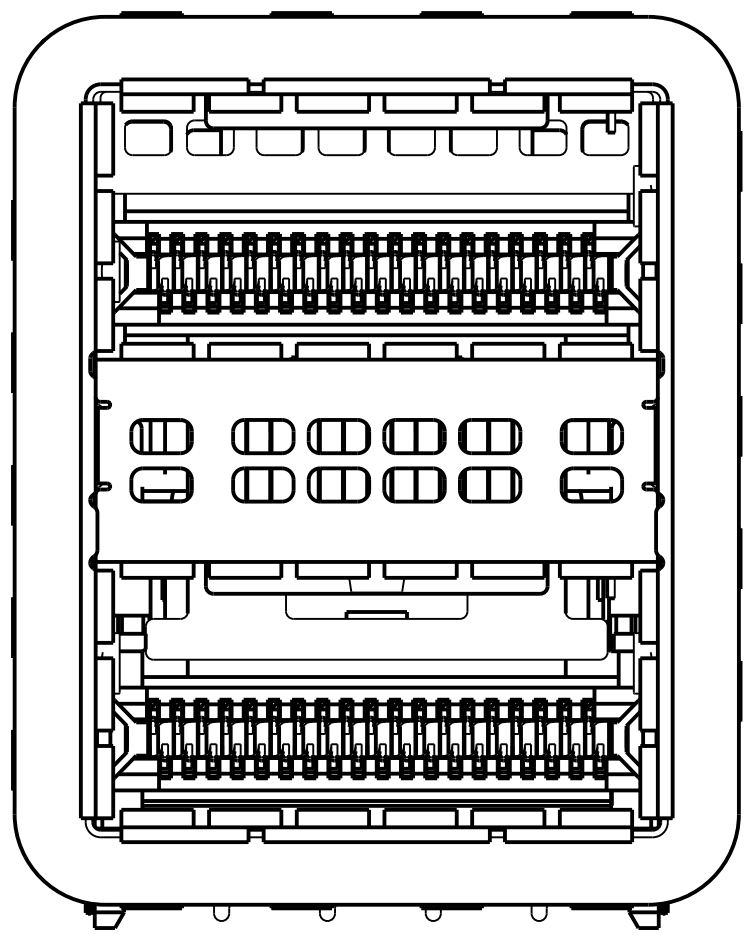
THIS PRODUCT HAS NOT COMPLETED VALIDATION AND QUALIFICATION TESTING

THIS DRAWING IS A CONTROLLED DOCUMENT. DIMENSIONING AND TOLERANCING PER ASME Y14.5M-2009		DWN M. SHIRK CHK D. SZCZESNY APVD	14AUG2012 14AUG2011
DIMENSIONS: mm	TOLERANCES UNLESS OTHERWISE SPECIFIED: 0 PLC ±.25 1 PLC ±0.25 2 PLC ±0.15 3 PLC ±. 4 PLC ±. ANGLES ±. FINISH -	PRODUCT SPEC APPLICATION SPEC	NAME
MATERIAL SEE NOTE 1	WEIGHT	SIZE A100779	RESTRICTED TO
CUSTOMER DRAWING		SCALE 4:1	SHEET 1 OF 4
		REV 8	

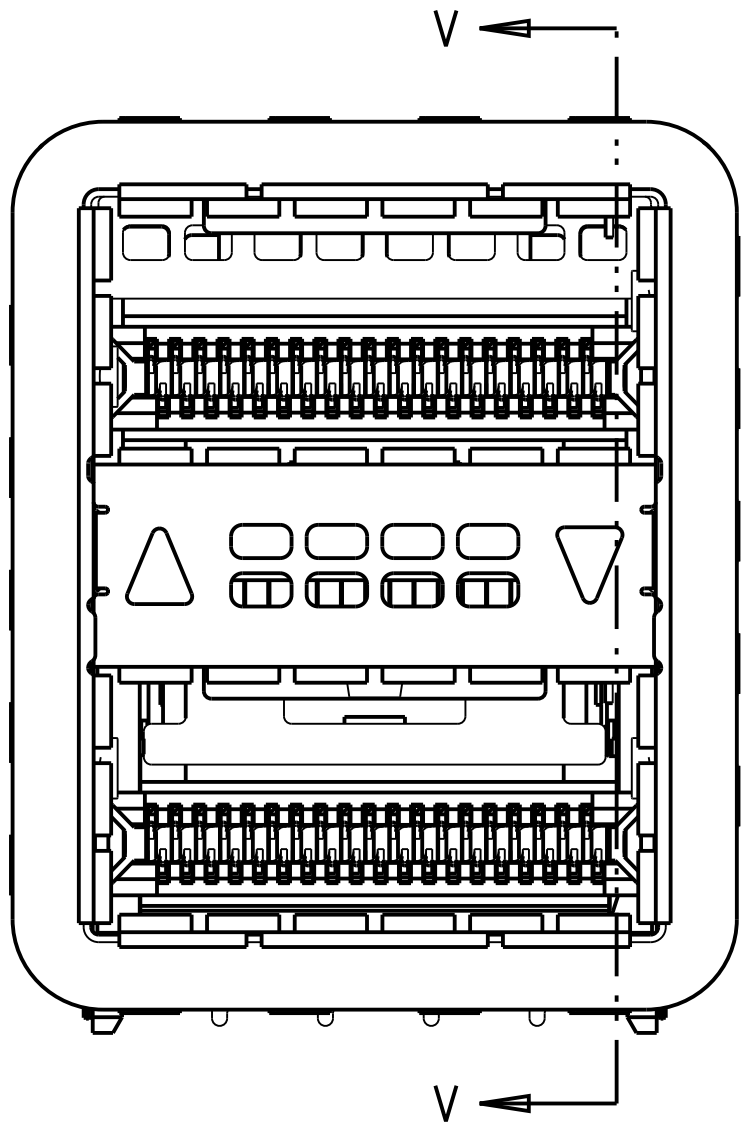


CAGE AND CONNECTOR ASSEMBLY WITH EMI GASKET, 2X1, ZQSFP+ STACKED

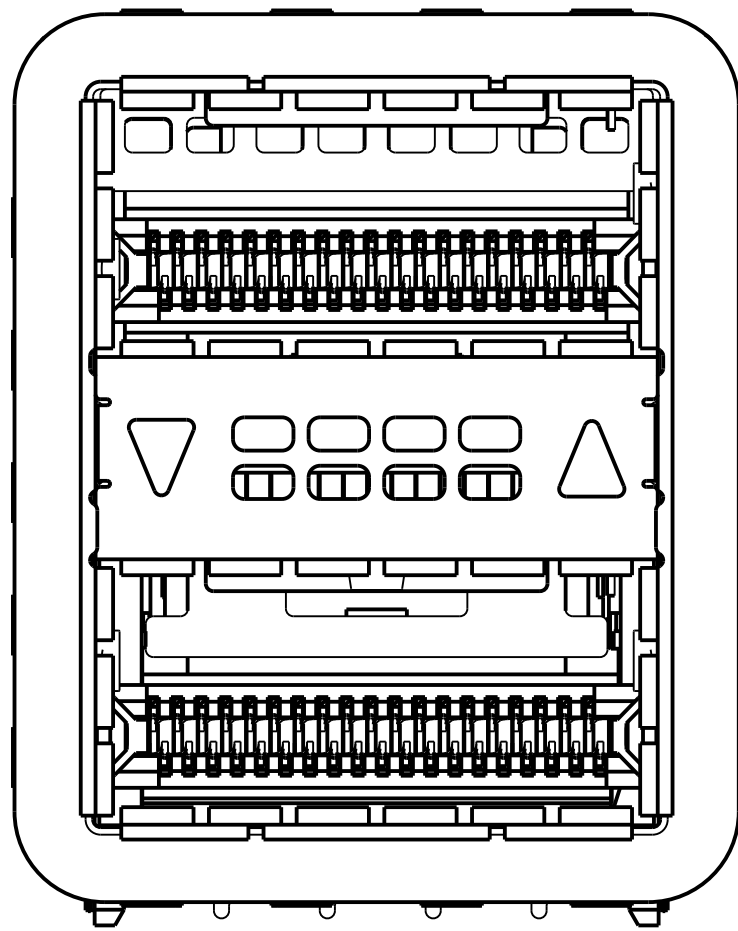
LOC		DIST		REVISIONS					
GP	00	P	LTR	DESCRIPTION	DATE	DWN	APVD		
		-		SEE SHEET 1	-	-	-		



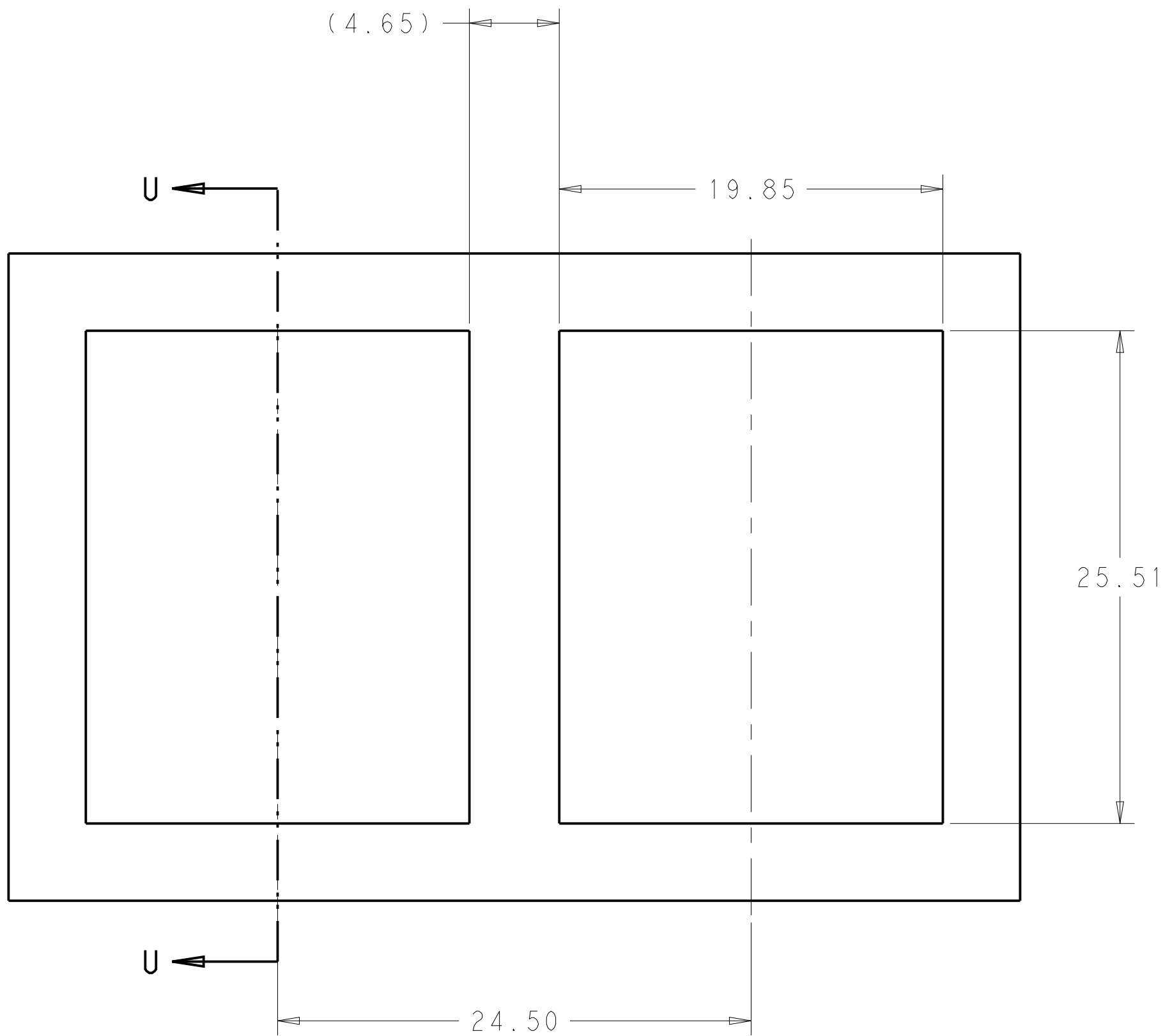
2227224-1 / 2227224-4
NO LIGHTPIPE IN ASSEMBLY



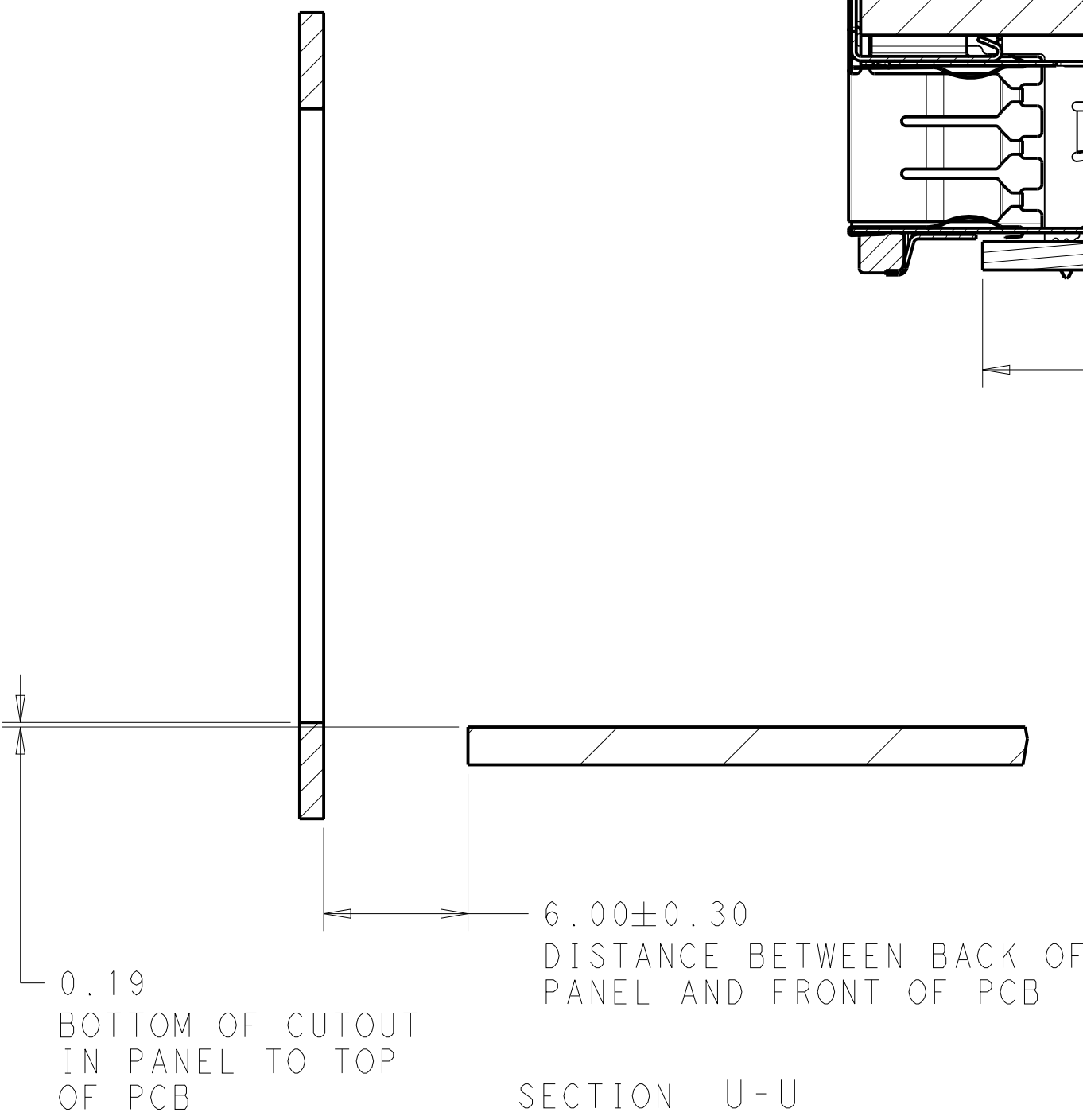
2227224-2 / 2227224-5
LEFT LIGHTPIPE INDICATOR
POINTING TO UPPER PORT



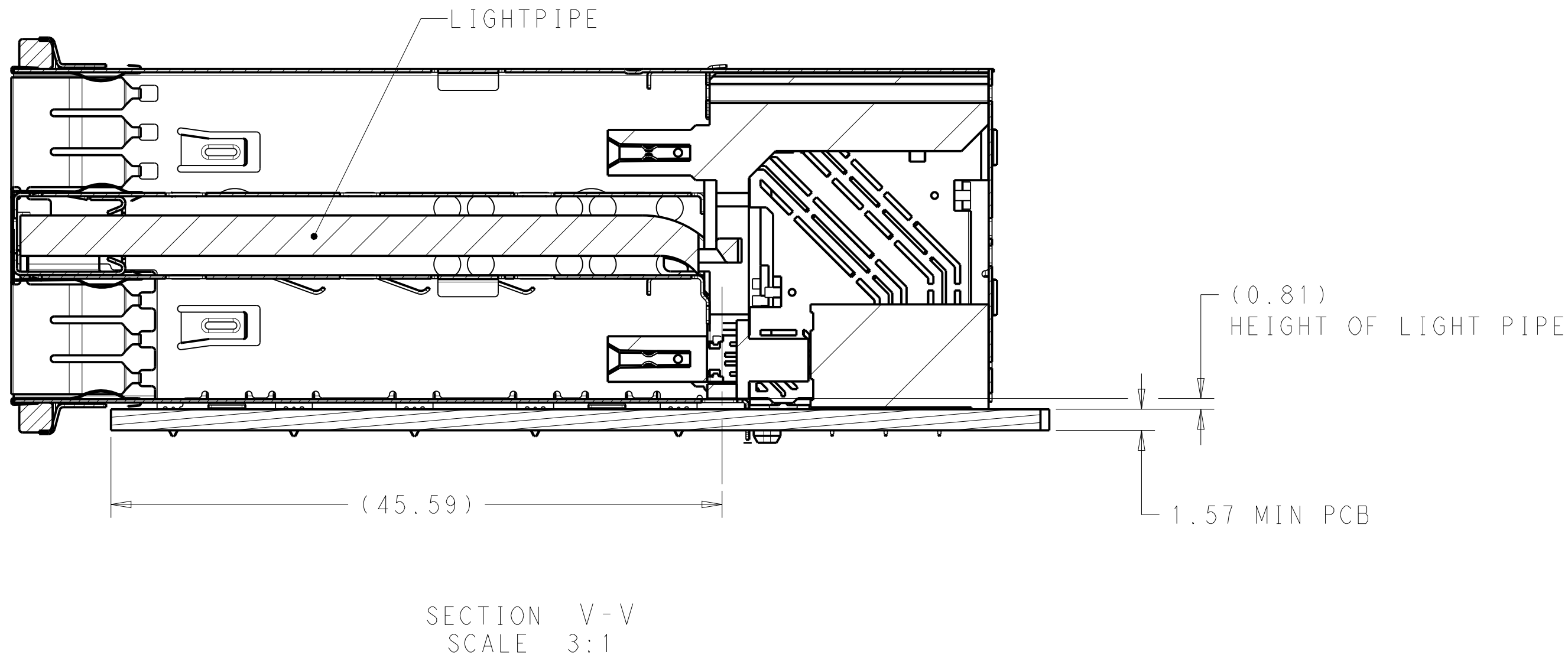
2227224-3 / 2227224-6
LEFT LIGHTPIPE INDICATOR
POINTING TO LOWER PORT



RECOMMENDED PANEL CUTOUT
AND PC BOARD, PANEL POSITION



PRELIMINARY - NOT RELEASED FOR PRODUCTION

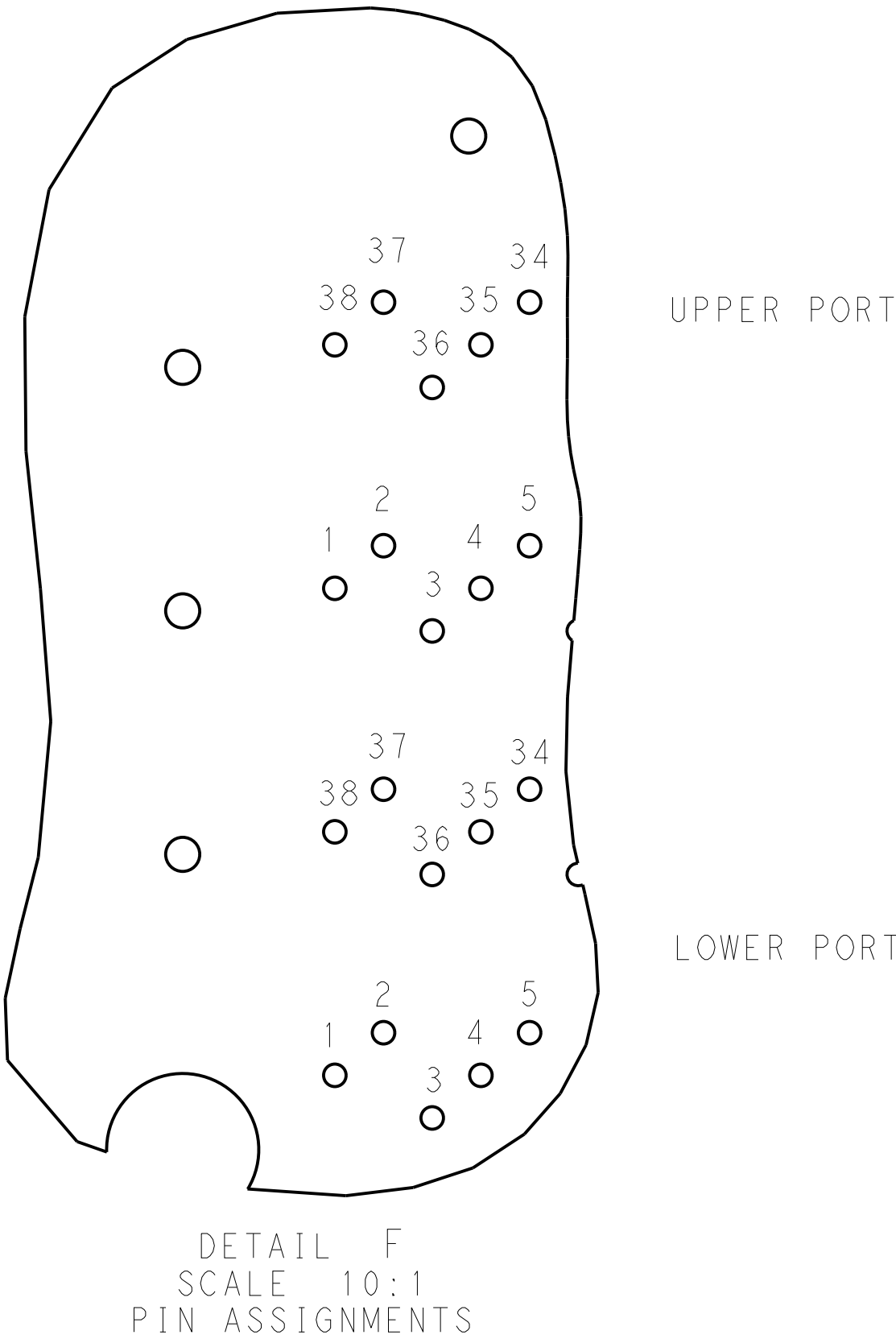
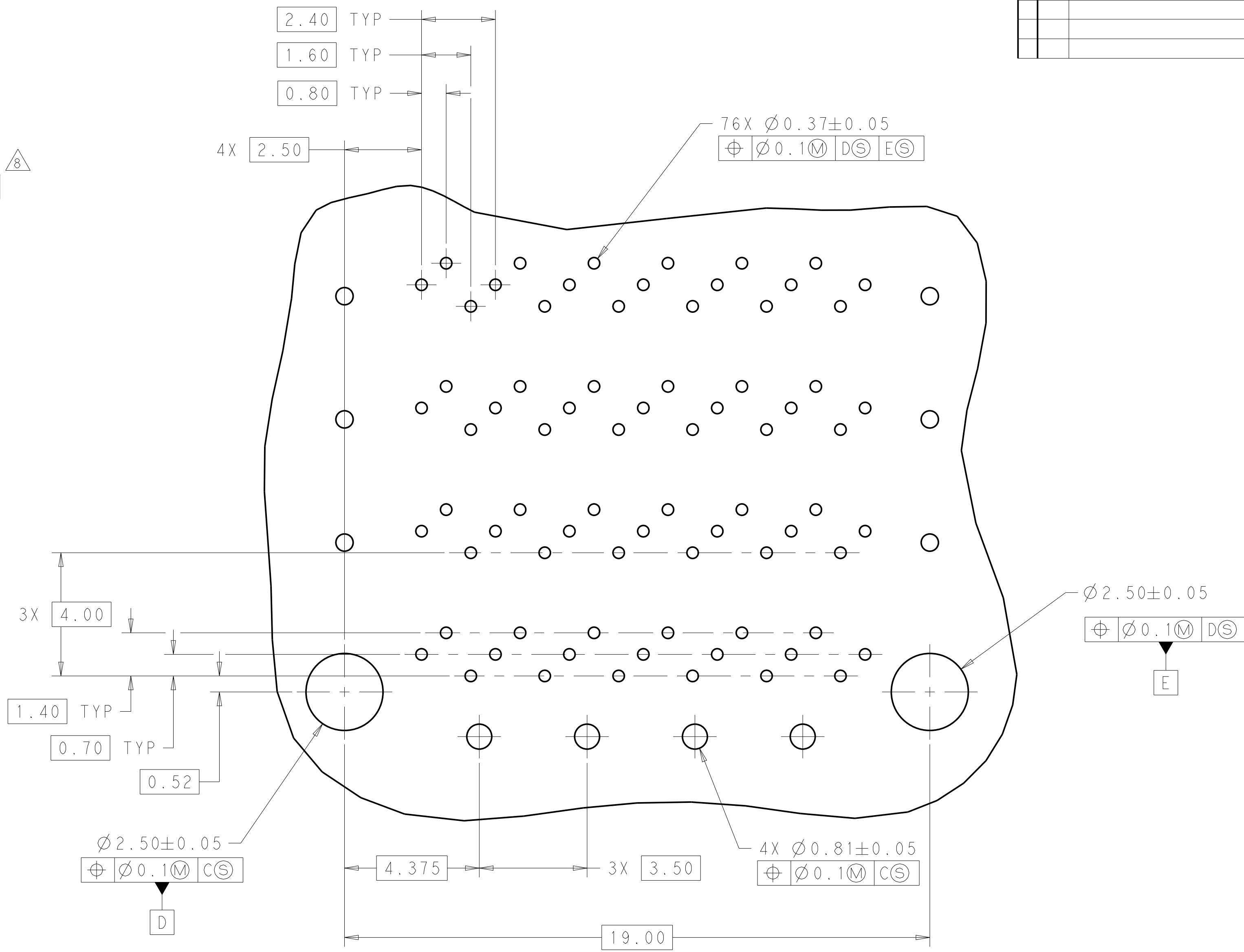
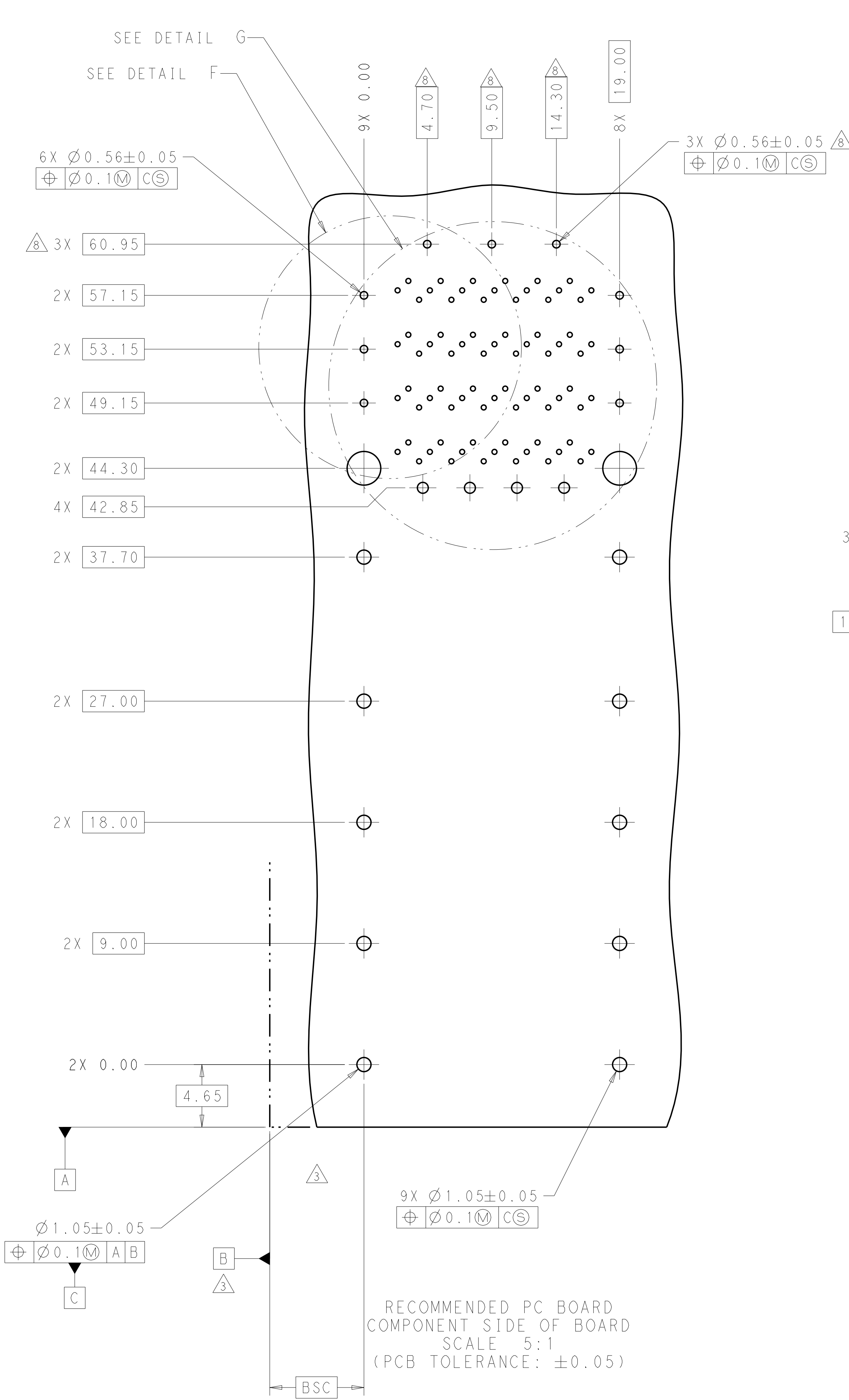


SECTION V-V
SCALE 3:1

THIS PRODUCT HAS NOT
COMPLETED VALIDATION AND
QUALIFICATION TESTING

THIS DRAWING IS A CONTROLLED DOCUMENT. DIMENSIONING AND TOLERANCING PER ASME Y14.5M-2009		DWN M. SHIRK 14AUG2012	TE Connectivity	
DIMENSIONS: mm		CHK D. SZCZESNY 14AUG2011	NAME	
TOLERANCES UNLESS OTHERWISE SPECIFIED:		APVD	CAGE AND CONNECTOR ASSEMBLY, WITH EMI GASKET, 2X1, ZQSFP+ STACKED	
0 PLC ± 1 PLC ±0.25 2 PLC ±0.15 3 PLC ± 4 PLC ±		PRODUCT SPEC	SIZE	
ANGLES ±		APPLICATION SPEC	CAGE CODE	
FINISH		WEIGHT	DRAWING NO	
MATERIAL		CUSTOMER DRAWING	RESTRICTED TO	
SEE NOTE 1			A100779C=2227224	
			SCALE 4:1 SHEET 2 OF 4 REV 8	

LOC		DIST		REVISONS			
GP	00	P	LTR	DESCRIPTION	DATE	DWN	APVD
		-		SEE SHEET 1	-	-	-



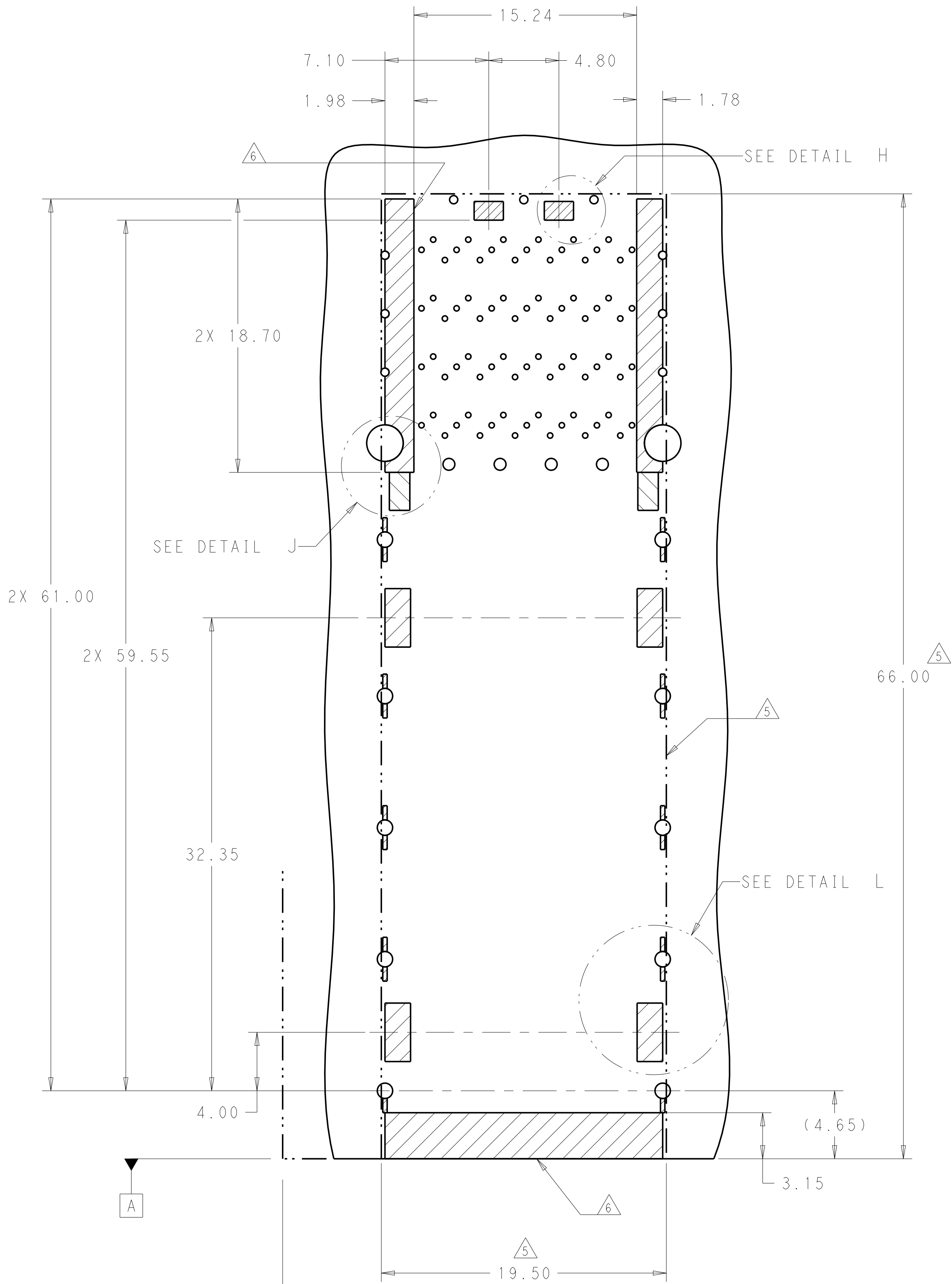
DETAIL G
SCALE 10:1

PRELIMINARY - NOT RELEASED FOR PRODUCTION

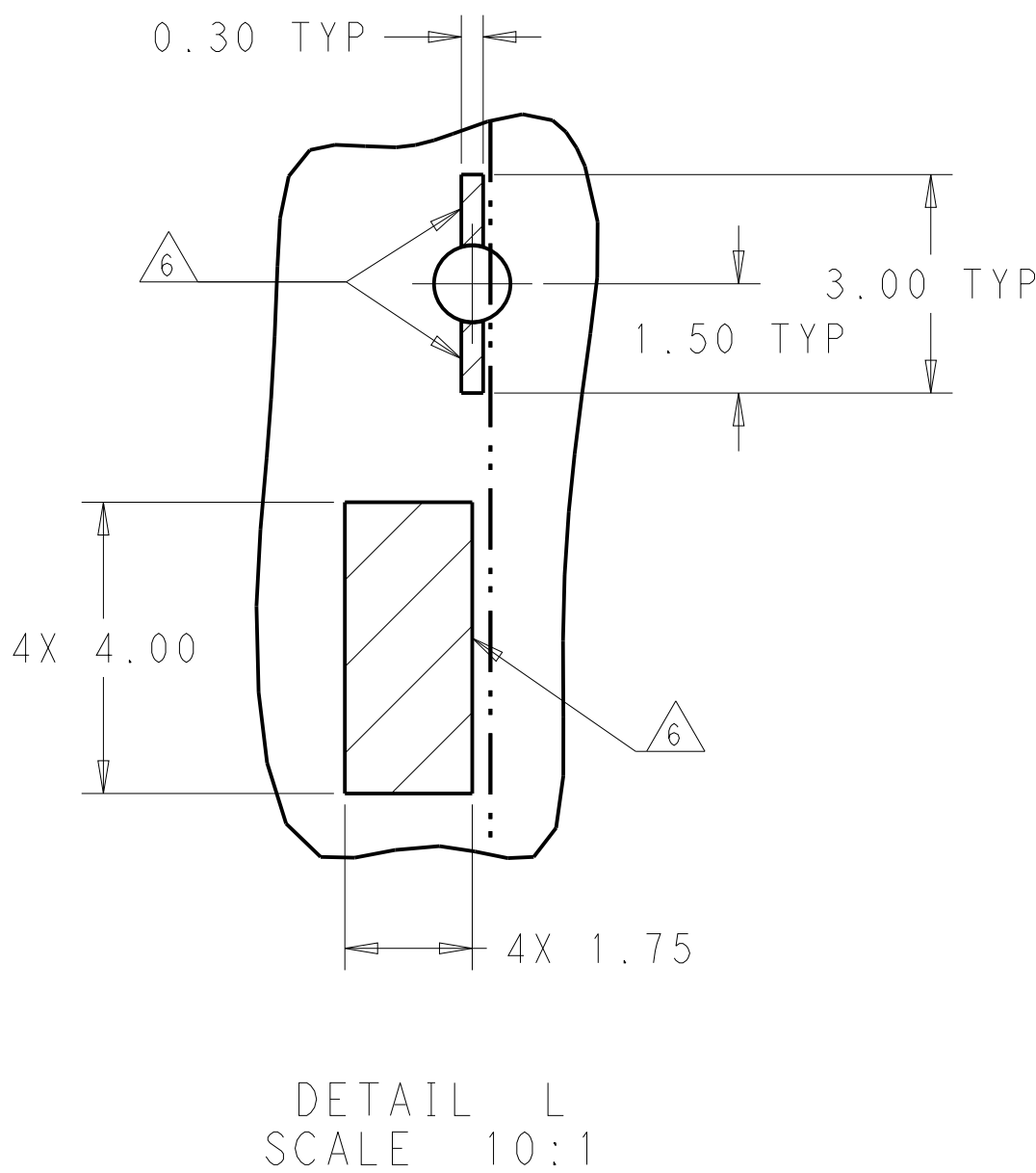
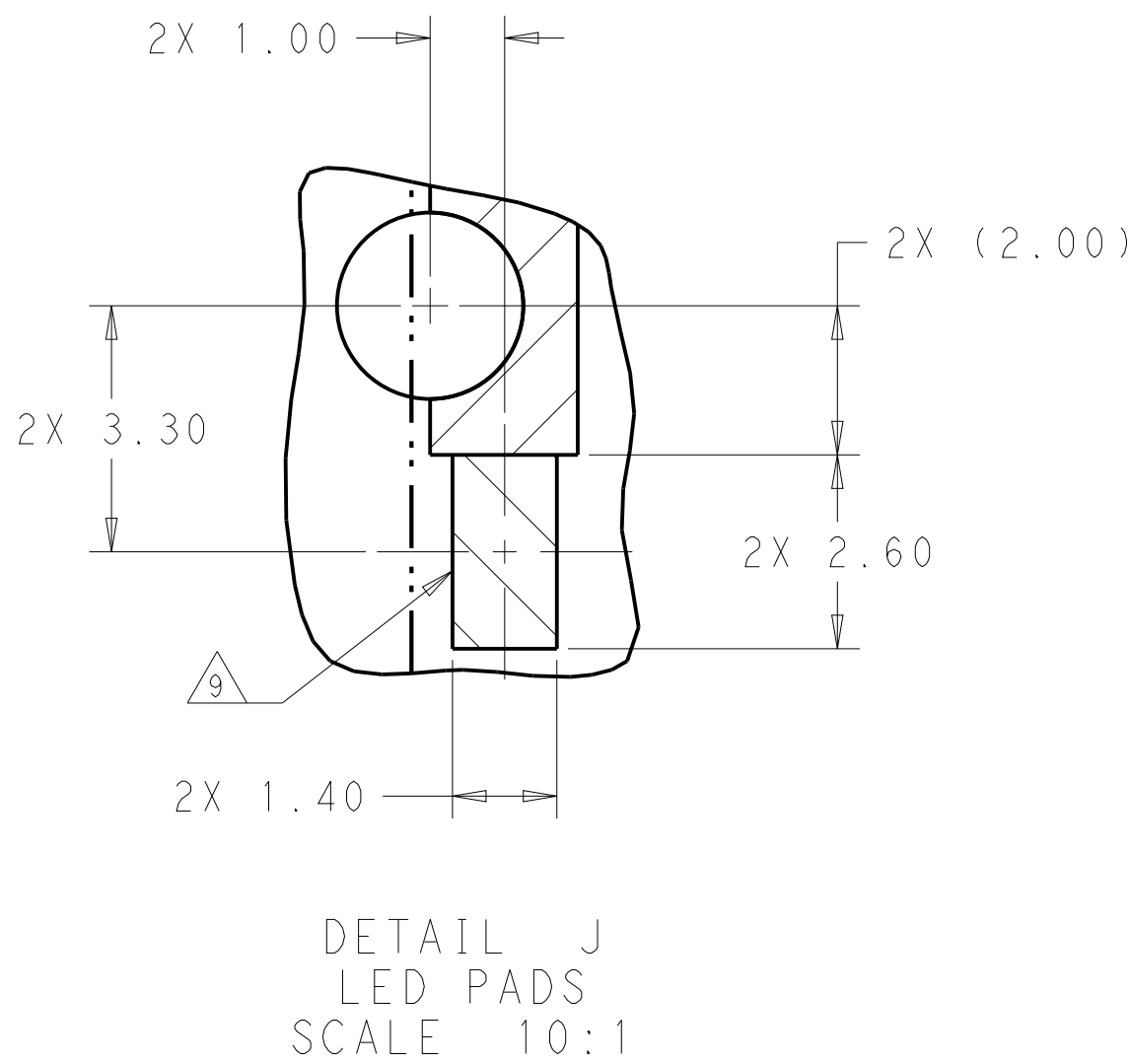
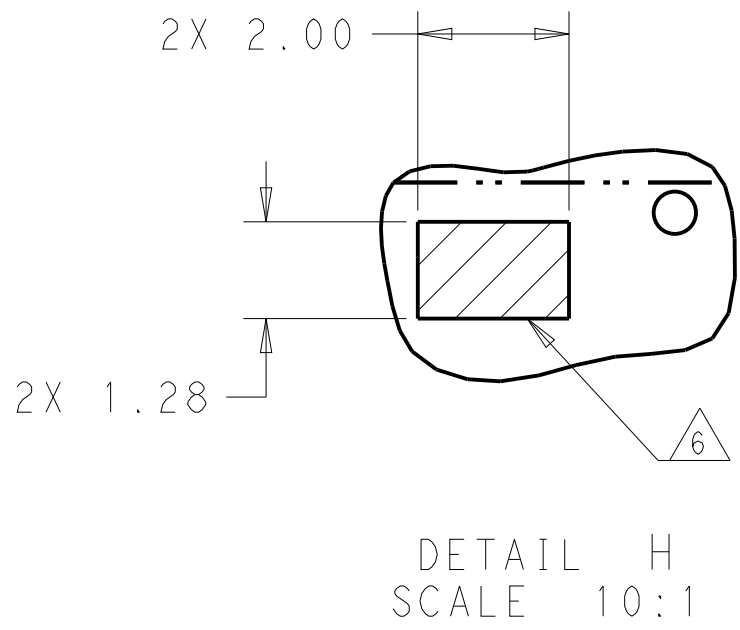
THIS PRODUCT HAS NOT
COMPLETED VALIDATION AND
QUALIFICATION TESTING

THIS DRAWING IS A CONTROLLED DOCUMENT. DIMENSIONING AND TOLERANCING PER ASME Y14.5M-2009		DWN M. SHIRK 14AUG2012	TE Connectivity	
DIMENSIONS: mm		CHK D. SZCZESNY 14AUG2011	NAME	
TOLERANCES UNLESS OTHERWISE SPECIFIED:		APVD	CAGE AND CONNECTOR ASSEMBLY, WITH EMI GASKET, 2X1, ZQSFP+ STACKED	
0 PLC \pm 1 PLC ± 0.25 2 PLC ± 0.15 3 PLC \pm 4 PLC \pm ANGLES \pm FINISH		PRODUCT SPEC	SIZE	
MATERIAL		APPLICATION SPEC	CAGE CODE	
SEE NOTE 1		WEIGHT	DRAWING NO	
		CUSTOMER DRAWING	A100779C=2227224	
		SCALE 4:1	SHEET 3 OF 4	
			REV 8	

LOC	DIST	REVISIONS					
		P	LTR	DESCRIPTION	DATE	DWN	APVD
GP	00	-	-	SEE SHEET 1	-	-	-



KEEPOUT AREAS
COMPONENT SIDE OF BOARD
SCALE 5:1



THIS PRODUCT HAS NOT
COMPLETED VALIDATION AND
QUALIFICATION TESTING

PRELIMINARY - NOT RELEASED FOR PRODUCTION

THIS DRAWING IS A CONTROLLED DOCUMENT. DIMENSIONING AND TOLERANCING PER ASME Y14.5M-2009		DWN M. SHIRK 14AUG2012	TE Connectivity	
DIMENSIONS: mm		CHK D. SZCZESNY 14AUG2011	NAME CAGE AND CONNECTOR ASSEMBLY, WITH EMI GASKET, 2X1, ZQSFP+ STACKED	
TOLERANCES UNLESS OTHERWISE SPECIFIED: 0 PLC ±.25 1 PLC ±0.15 2 PLC ±. 3 PLC ±. 4 PLC ±. ANGLES ±. FINISH -		APVD -	PRODUCT SPEC APPLICATION SPEC	
MATERIAL SEE NOTE 1		WEIGHT -	SIZE A100779C=2227224	
		CUSTOMER DRAWING	SCALE 4:1	SHEET 4 OF 4 REV 8