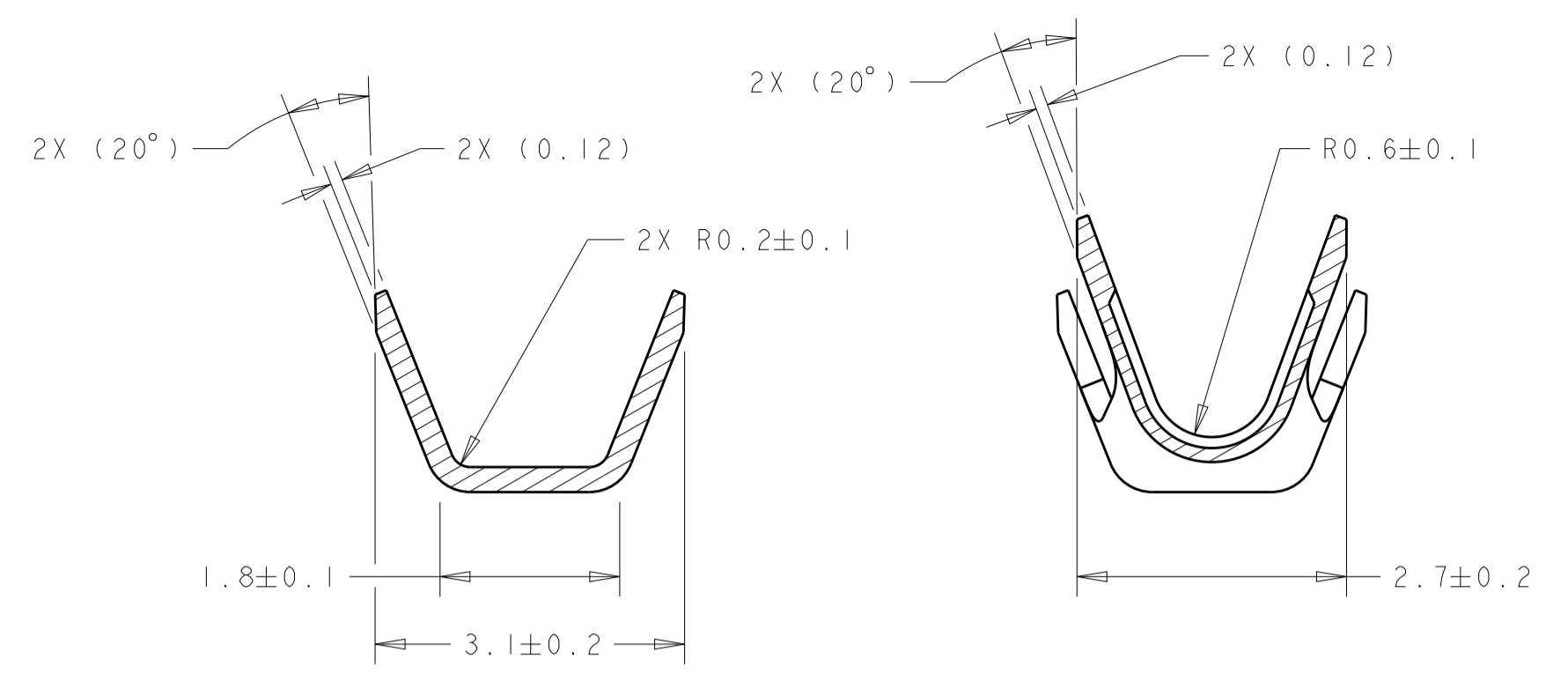
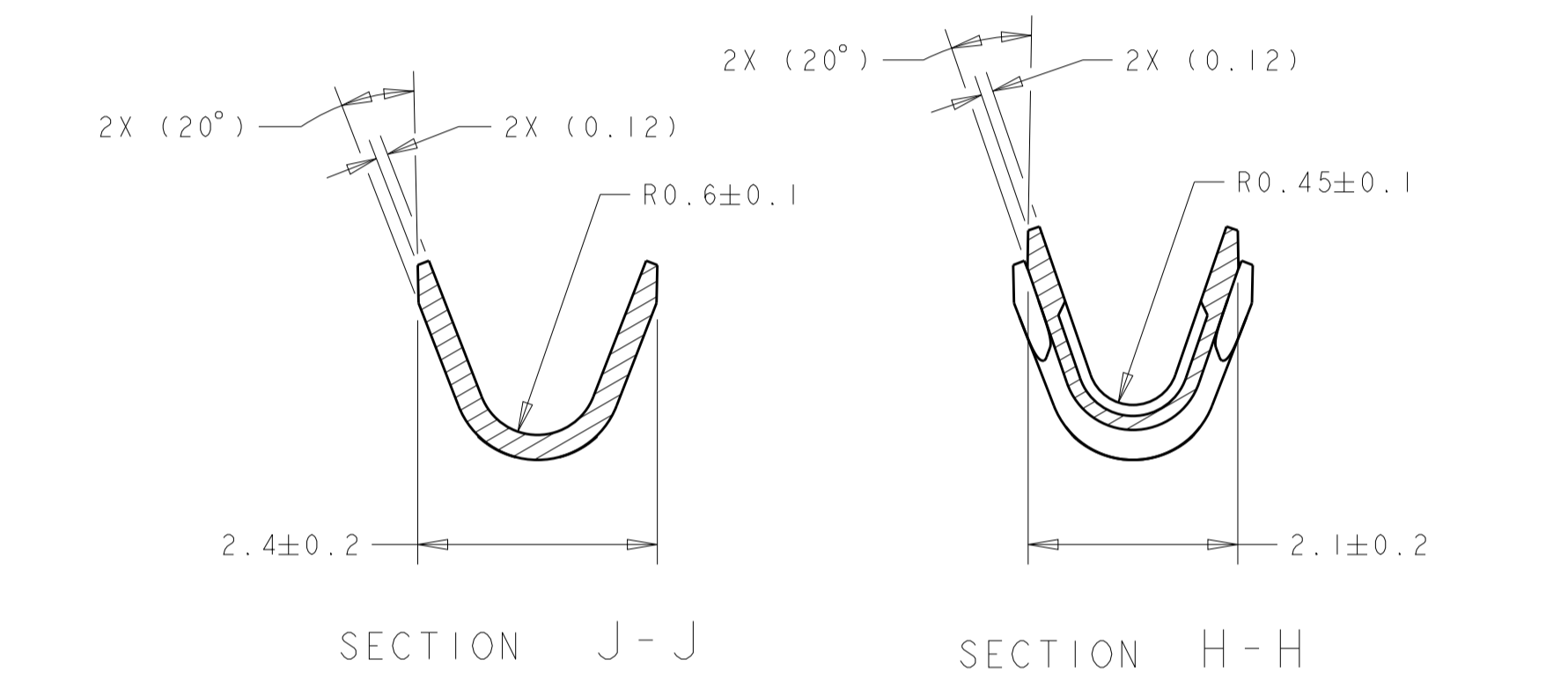
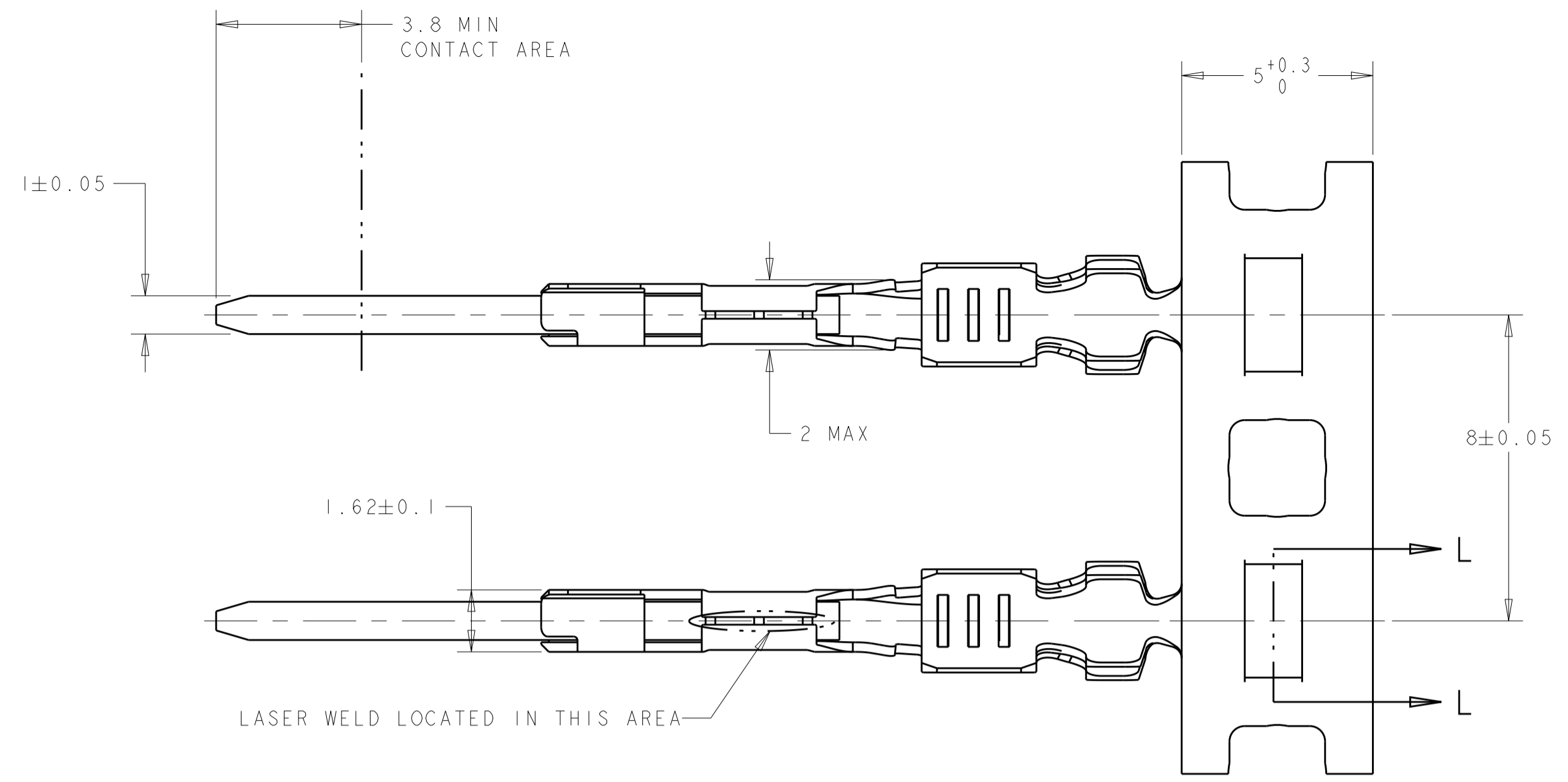
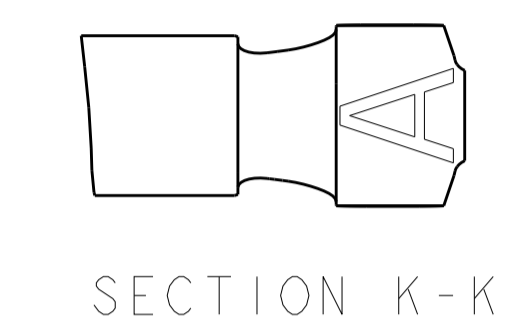
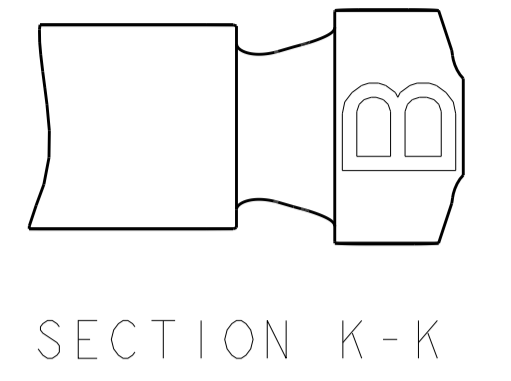


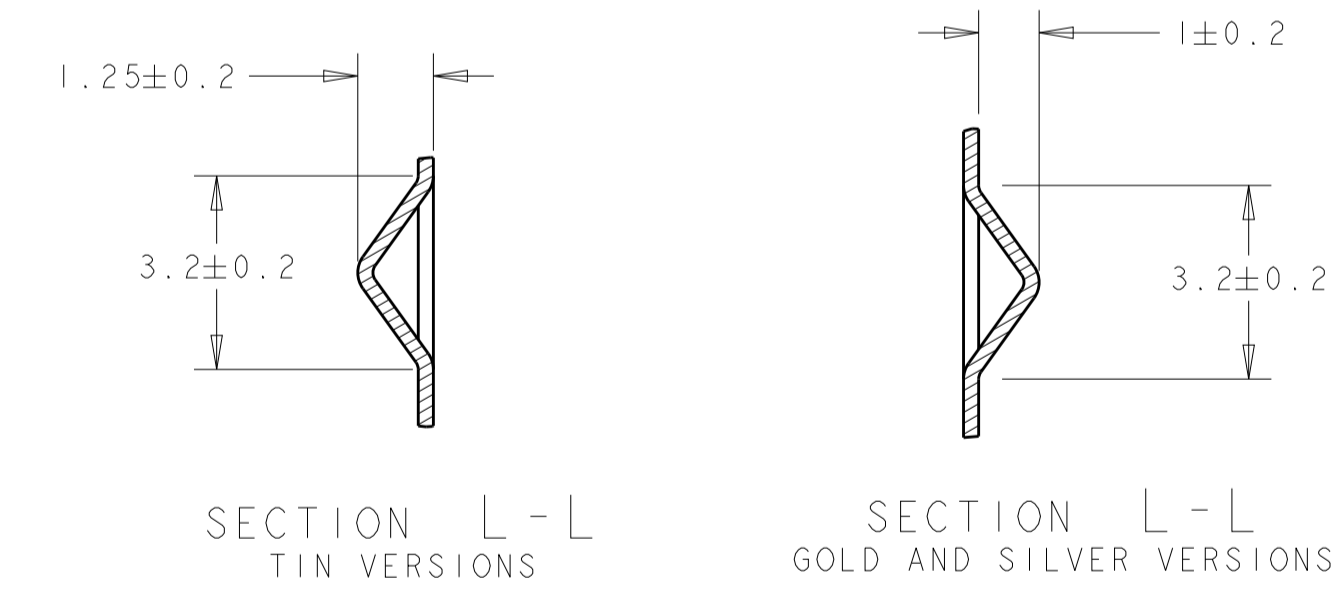
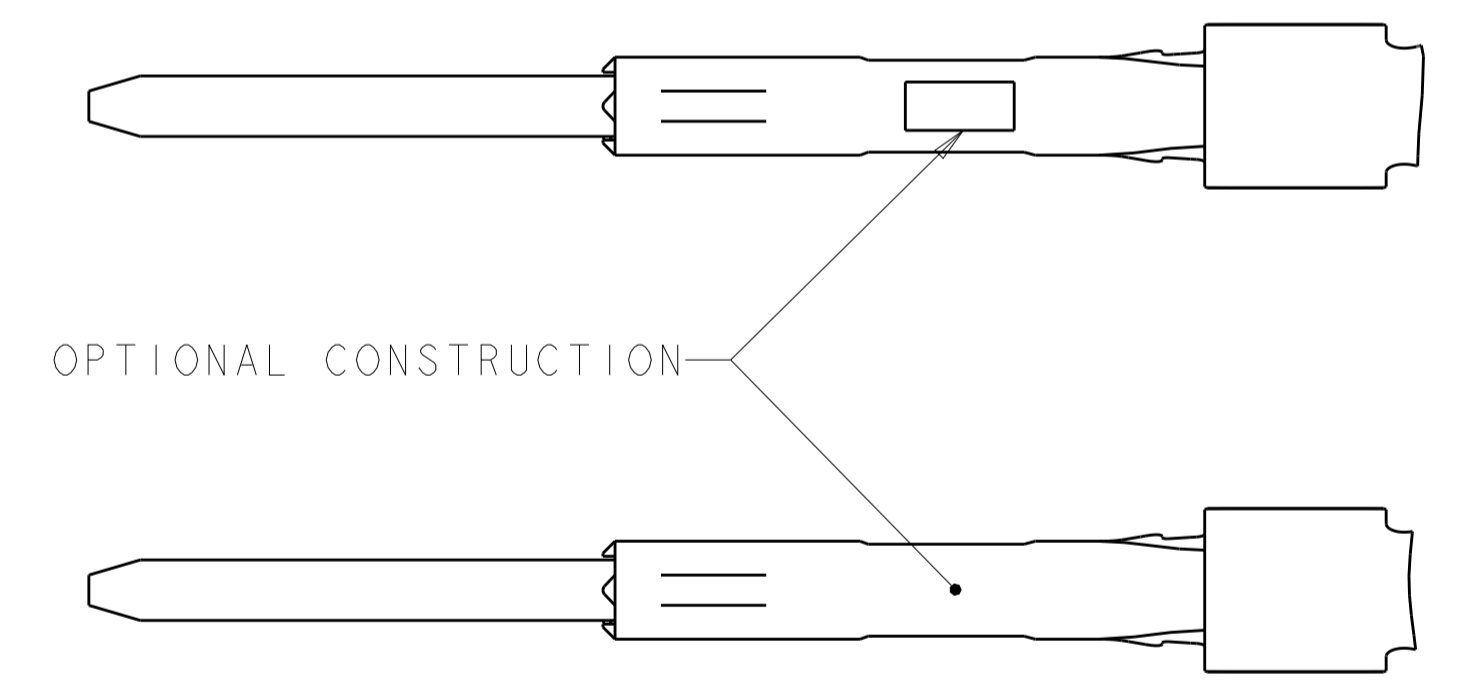
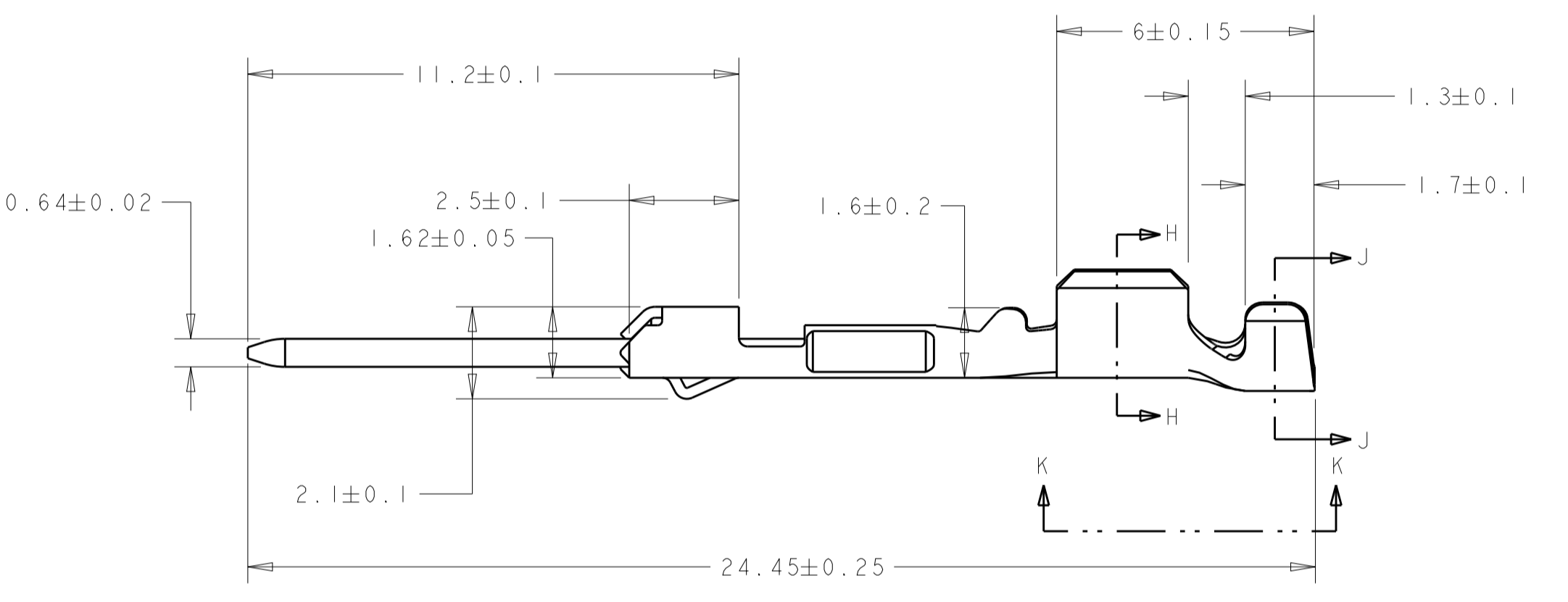
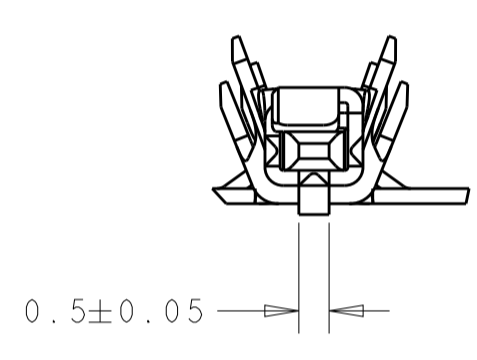
REVISIONS				
P.	LTN	DESCRIPTION	DATE	OWN APVD
F1		REVISED PER ECO-11-005030	11MAR2011	RK HMR
F2		REVISED PER ECO-15-010152	09JUL2015	DD WW



SECTION J-J SECTION H-H
 CRIMP B WIRE CRIMP AREAS

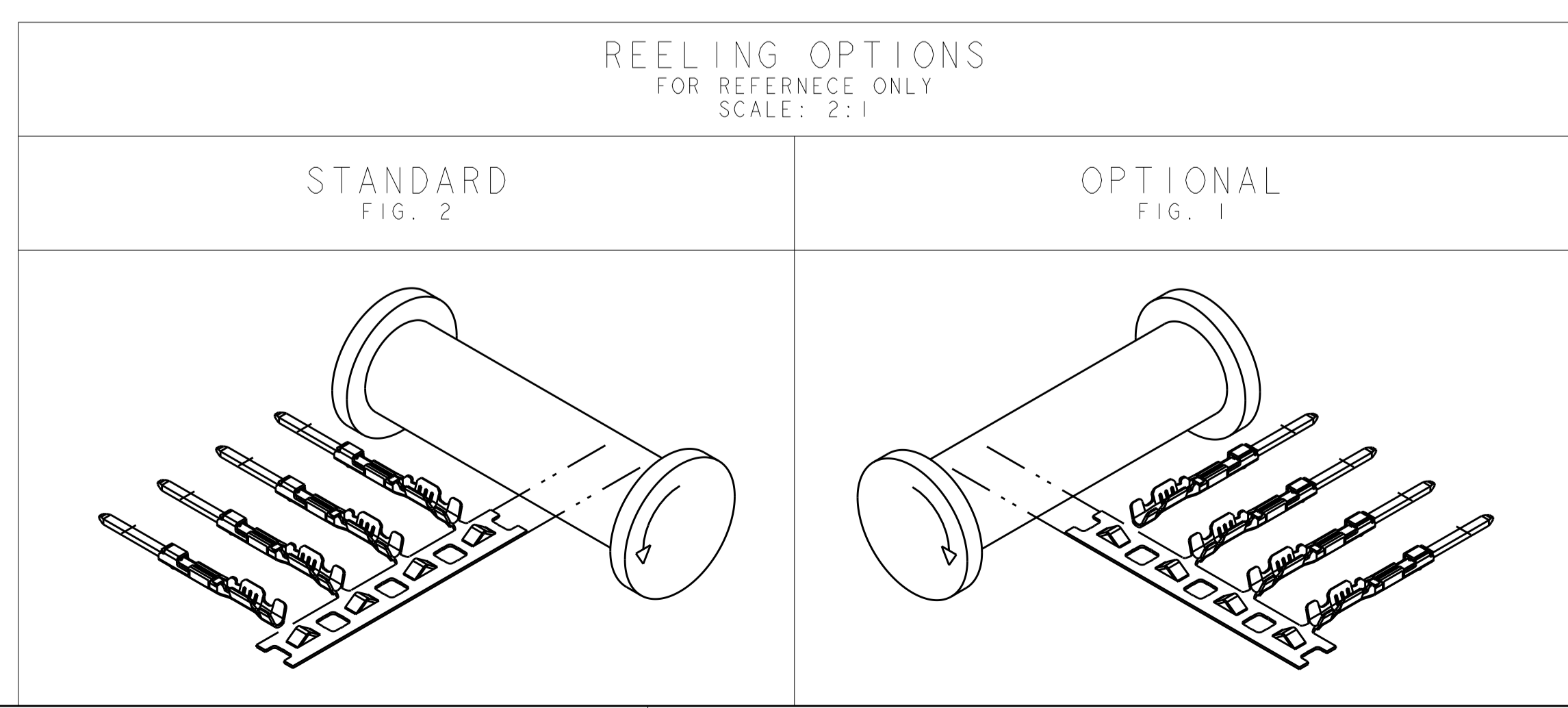


SECTION J-J SECTION H-H
 CRIMP A WIRE CRIMP AREAS



SECTION L-L TIN VERSIONS SECTION L-L GOLD AND SILVER VERSIONS

PART NO	WIRE CRIMP CODING	CONDUCTOR WIRE SIZE	REELING	PLATING SPEC.
1-1438299-1	B	0.50/0.75	FIG. 1	SILVER
1-1438299-0	A	0.22/0.35	FIG. 1	SILVER
1438299-8	B	0.50/0.75	FIG. 2	SILVER
1438299-7	A	0.22/0.35	FIG. 2	SILVER
1438299-4	B	0.50/0.75	FIG. 1	TIN
1438299-3	B	0.50/0.75	FIG. 1	GOLD
1438299-2	A	0.22/0.35	FIG. 1	TIN
1438299-1	A	0.22/0.35	FIG. 1	GOLD
2-1419158-5	B	0.50/0.75	FIG. 2	TIN
2-1419158-3	B	0.50/0.75	FIG. 2	GOLD
1-1419158-6	A	0.22/0.35	FIG. 2	TIN
3-1419158-1	A	0.22/0.35	FIG. 2	GOLD



- MATERIAL:
 CRIMP: COPPER ALLOY, MATERIAL THICKNESS = 0.25±0.01
 PIN: COPPER ALLOY, MATERIAL THICKNESS = 0.64±0.01
 MATERIAL WIDTH = 1.00±0.01
- MUST BE FREE OF CRACKS AND BURRS THAT AFFECT FUNCTION.
- WHEN A TIN/GOLD PLATED TERMINAL IS USED ON THE MALE SIDE THEN THE CORRESPONDING PLATING (TIN OR GOLD) MUST BE USED ON THE FEMALE TERMINAL.
- 0.2 MM MAX RADIUS PERMISSIBLE ON EDGES AND FILLETS SHOWN AS SHARP FOR STAMPING PARTS.
- GENERAL TOLERANCES: .X = ±0.3
 .XX = ±0.1
 ANGLES = ±3°
- CRIMP SPECIFICATION : 114-13060.
- PLATE: >= 0.8µm Au IN CONTACT AREA OVER NICKEL.
- PLATE 2-4µm SILVER IN CONTACT AREA OVER NICKEL.
- FOR SILVER PLATING: ELECTRICAL PERFORMANCE IS NOT AFFECTED BY GRAY, BROWN OR BLACK TARNISH ON THE SILVER PLATING SURFACES. ACCEPTABLE SILVER SURFACES CAN INCLUDE GRAY, BROWN OR BLACK TARNISH.

THIS DRAWING IS A CONTROLLED DOCUMENT.		OWN DL DRUMMOND 22JAN2004	3-1419158-1	
DIMENSIONS: mm		CHK WT WELLINSKY 23JAN2004	PART NUMBER	
TOLERANCES UNLESS OTHERWISE SPECIFIED:		APVD WT WELLINSKY 23JAN2004	TE Connectivity	
0 PLC ±		PRODUCT SPEC	0.64mm GET MALE IN-LINE TERMINAL	
1 PLC ±		APPLICATION SPEC	SIZE CAGE CODE DRAWING NO RESTRICTED TO	
2 PLC ±		SEE NOTES	A100779C=3-1419158-1	
3 PLC ±		WEIGHT	SCALE 8:1 SHEET 1 OF 1 REV F2	
4 PLC ±		CUSTOMER DRAWING		