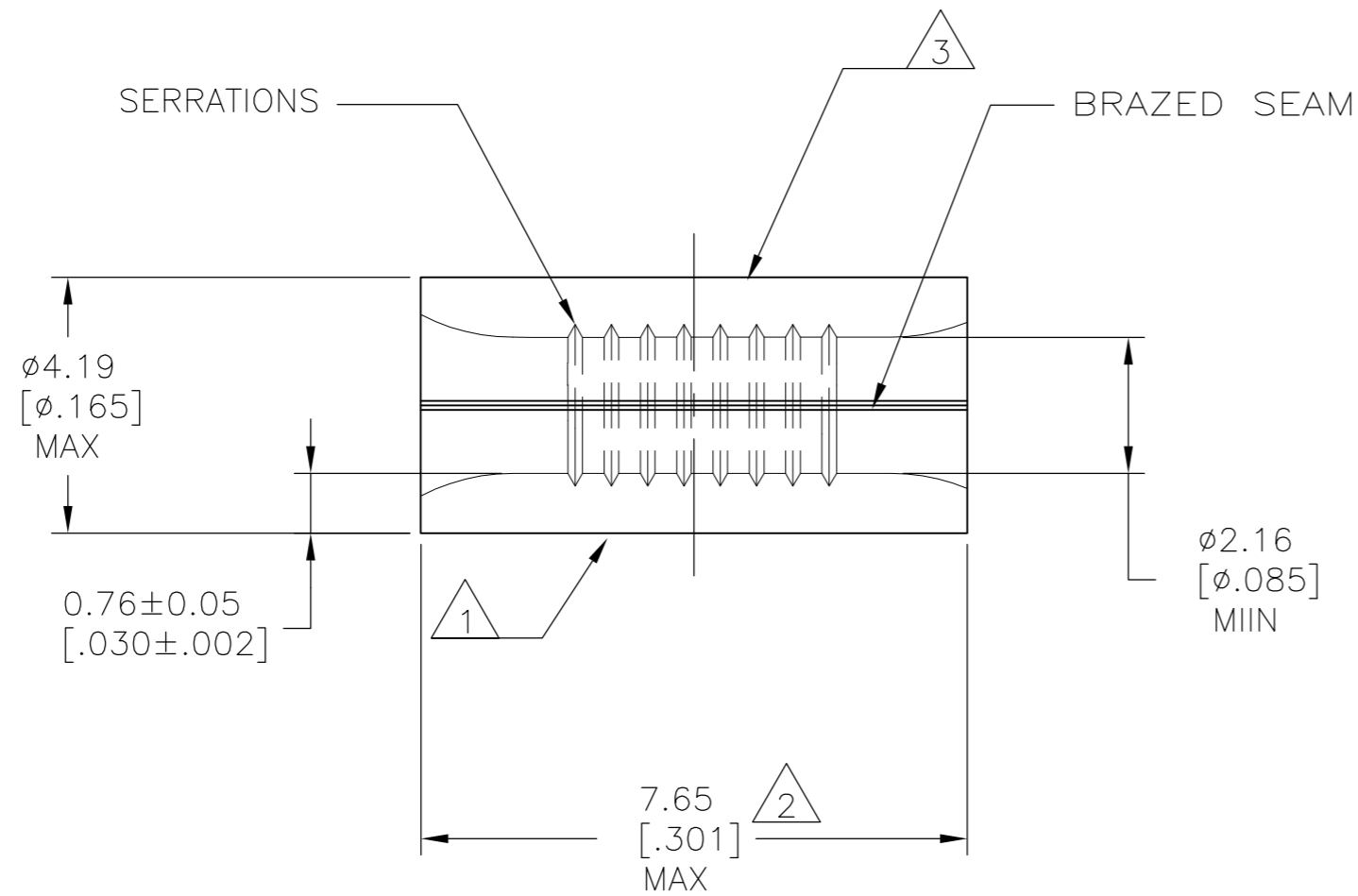
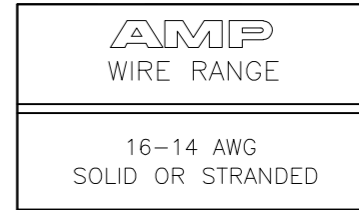


THIS DRAWING IS UNPUBLISHED. RELEASED FOR PUBLICATION  
 © COPYRIGHT - By - ALL RIGHTS RESERVED.

LOC	DIST	REVISIONS			
P	LTR	DESCRIPTION	DATE	DWN	APVD
G	14	G3	REVISED PER ECO-14-019230	03APR2015	NK DR



- 1 STAMP "AMP 16-14 2 1/2-4" APPROX AS SHOWN.
- 2 MAXIMUM LENGTH DOES NOT INCLUDE MANUFACTURING TABS.
- 3 WIRE BARREL COLOR CODED ORANGE TO DENOTE NICKEL MATERIAL.
- 4 NOTE DELETED.
- 5 NICKEL PER ASTM B-162, ANNEALED.

CUSTOMER SERVICE SYSTEMS

MAX RECOMMENDED OPERATING TEMPERATURE:  
649°C [1200°F] MAX

1000	LOOSE PIECE	3 322347
QTY	PACKAGE TYPE	PART NO.

FOR ADDITIONAL PRODUCT INFORMATION OR COPIES OF DRAWINGS AND TECHNICAL DOCUMENTS	PRODUCT INFORMATION CENTER 1-800-522-6752
FOR APPLICATION TOOLING INFORMATION	TOOLING ASSISTANCE CENTER 1-800-722-1111
FOR ORDER ENTRY	1-800-526-5142

VOLTAGE RATING:  
N/A

CIRCULAR MIL AREA:  
1.04-2.62mm<sup>2</sup> [2,050-5,180]  
SOLID OR STRANDED

THIS DRAWING IS A CONTROLLED DOCUMENT.		DWN TA BRINKMAN 4-19-93		
DIMENSIONS: mm [INCHES]		CHK DA PATTERSON 4-19-93		
TOLERANCES UNLESS OTHERWISE SPECIFIED:		APVD JL MECKLEY 4-19-93	NAME	
0 PLC ± -		PRODUCT SPEC	SPLICE, PARALLEL, HIGH TEMPERATURE, STRATO-THERM	
1 PLC ± -		APPLICATION SPEC	SIZE	CAGE CODE
2 PLC ± -		WEIGHT	A2	00779
3 PLC ± -		FINISH	DRAWING NO	
4 PLC ± -		MATERIAL	C=322347	
4 PLC ANGLES ± -		CUSTOMER DRAWING	SCALE	SHEET
5			10:1	1 of 1
			REV	G3