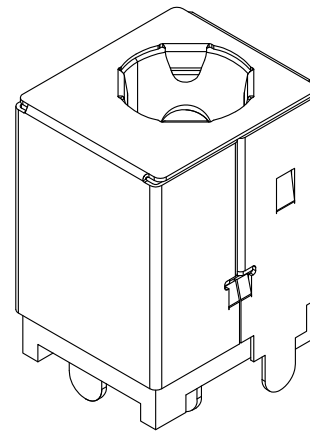


Recommended PCB Layout
(Tolerance: ±0.05mm)

Component Outline



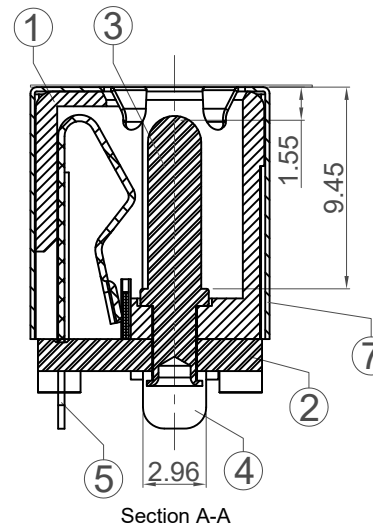
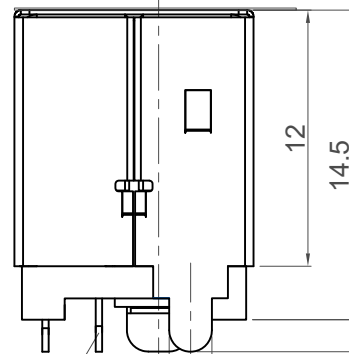
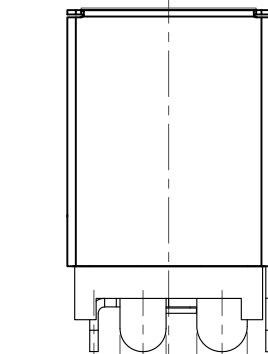
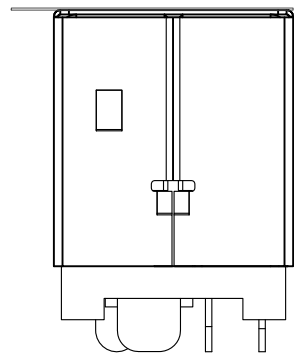
Specifications 规格

Electrical 电气规格

- Voltage Rating 电压额定值: 20 V DC
- Current Rating 电流额定值: 7 Amp
- Insulation Resistance 绝缘电阻值: 100 MΩ min.
- Dielectric Withstanding 耐电压: 500 V AC
- Contact Resistance 接触电阻值: 30 mΩ max.

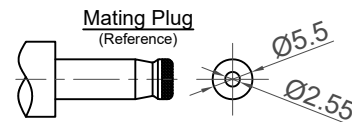
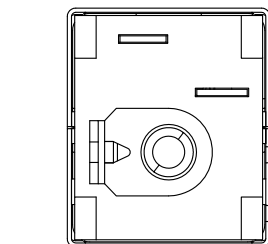
Mechanical & Environmental 机械 & 环境

- Operating Temperature 工作温度: -20°C to +70°C
- Durability 耐久性: 5,000 cycles min.

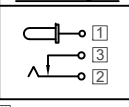


Section A-A

No.	Description	Material	Q'ty
①	Housing	PA9T, UL94 V-0, Black	1
②	Cover	PA9T, UL94 V-0, Black	1
③	Centre Pin	① Brass, Nickel plating	1
④	Centre Pin Terminal	① Brass, T=0.4mm, Silver plating	1
⑤	Tip Spring	② Phosphor Bronze, T=0.3mm, Silver plating	1
⑥	Shunt Terminal	③ Brass, T=0.3mm, Silver plating	1
⑦	Shell	Stainless Steel, T=0.2mm, Nickel plating	1
⑧	Mylar	Polyimide, Yellow	1

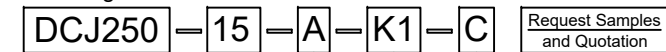


Circuit Diagram



Terminal Number

Ordering Grid



Circuit Diagram
A = 2 Conductors/3 Contacts
Insulator Colour
K1 = Black

Packing
C = Tape & Reel
with Film
(150 per reel)

Part Number		Product Description	
DCJ250-15		DC Power Jack, Thru-Hole, Vertical, Shielded	
Drawing Date		Ø2.50mm Pin mates with Ø2.55mm Plug	
7th December 2015			
By	AJO	Tolerances (Except as Noted)	Units:
Detail	Drawing Release	Length	Metric (mm)
Revision	A	Angle	3rd Angle Projection
Date	07/12/15	± 0.3	± 2°



This drawing is confidential and copyright of Global Connector Technology, Ltd (GCT). This drawing must not be copied or disclosed without written consent. E & OE

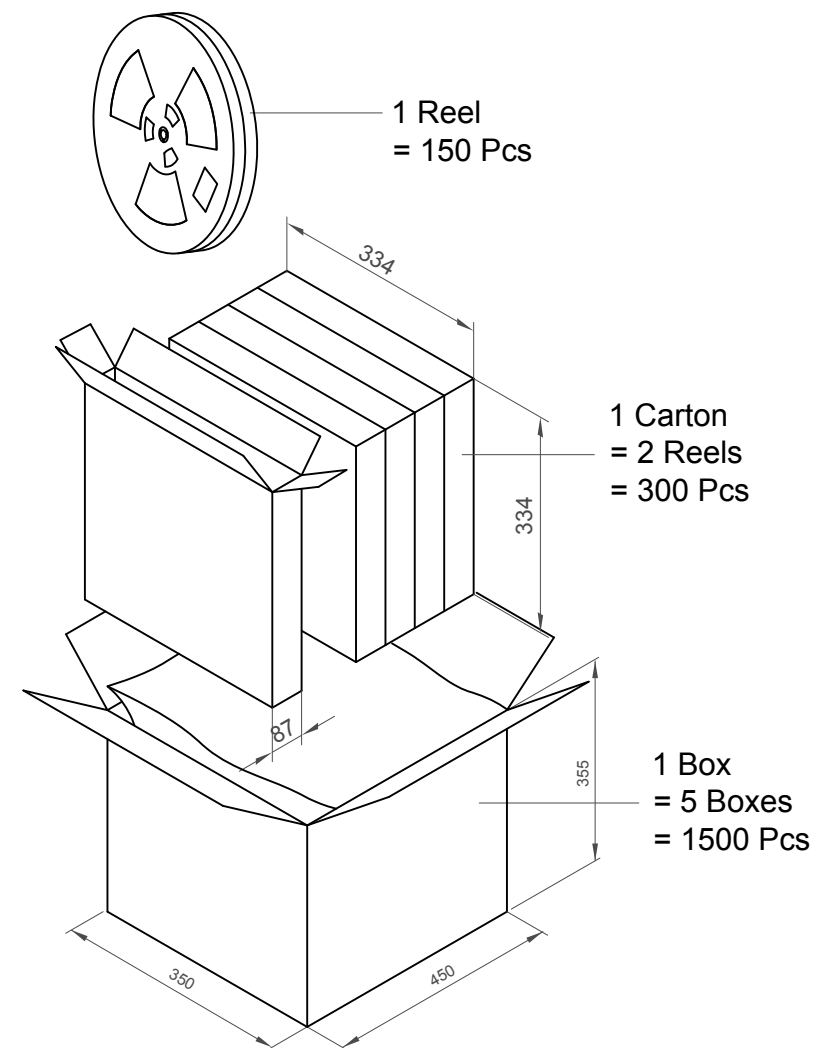
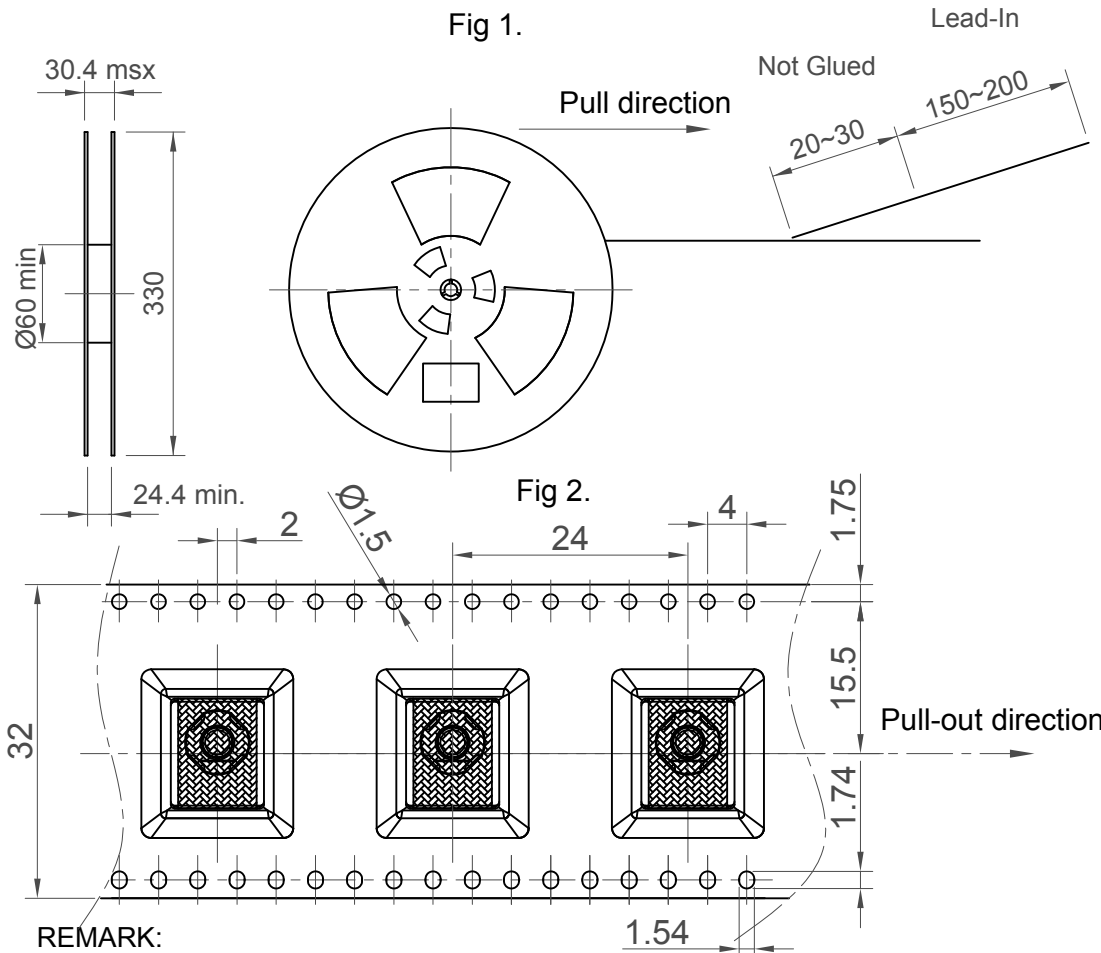
GCT

Global Connector Technology
www.gct.co

Not to Scale | Drawn By AJO | Sheet No. 1/2

Part Number	Pcs/Reel	Reels/Carton	Cartons/Box	Pcs/Box
DCJ250-15	150	2	5	1500

Fig 3.



REMARK:

- 1.The connector can not be loaded on the position of length 240~360mm in the reel tape and lead tape.The cover tape with 20~30mm length shall not be adhesive on the lead tape and the cover tape is lead portion shall have 150~200mm length (Refer FIG 1).
- 2.Tape shall turn on right direction.
- 3.The direction of connector is fixed regarding the position of terminal,please refer outline drawing (Refer FIG 2).
- 4.After winding,using the adhesive tape(30~50mm) to stick the leader of cover tape on the side of reel.
- 5.One reel can be loaded 150 pcs connector.
- 6.The label shall be pasted on the front side of reel (Refer FIG 3).
- 7.Condition of 300mm per minute ,the extraction strength of cover tape shall reach 20~150 gf.
- 8.If the quantity is less then 6 reels per carton, the packing shall be able to resist shaking.

Part Number		Product Description			This drawing is confidential and copyright of Global Connector Technology, Ltd (GCT). This drawing must not be copied or disclosed without written consent. E & OE
DCJ250-15		DC Power Jack, Thru-Hole, Vertical, Shielded			
Drawing Date		Ø2.50mm Pin mates with Ø2.55mm Plug			
7th December 2015					Not to Scale Drawn By AJO Sheet No. 2/2
By	AJO	Tolerances (Except as Noted)	Units: Metric (mm)		
Detail	Drawing Release	Length	Angle		
Revision	A				
Date	07/12/15				

GCT
Global Connector Technology
www.gct.co