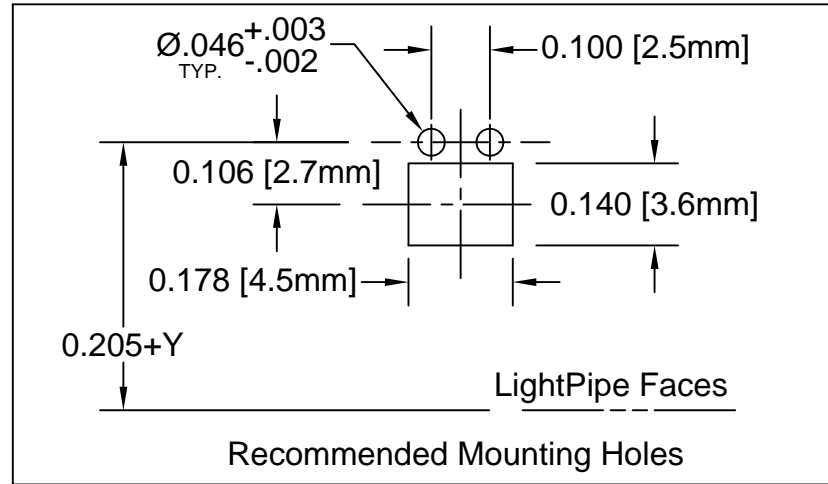
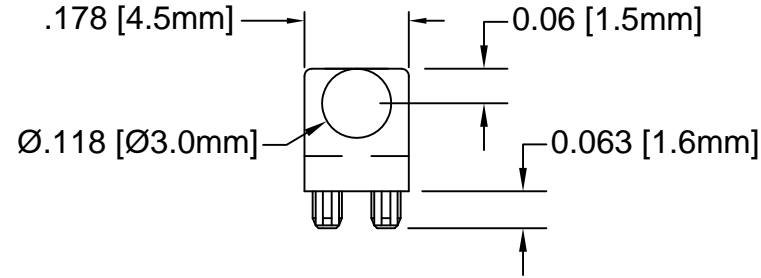
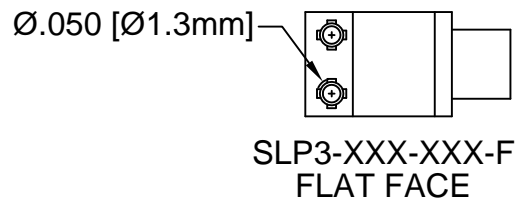
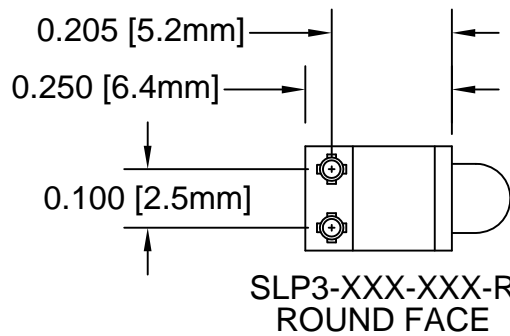
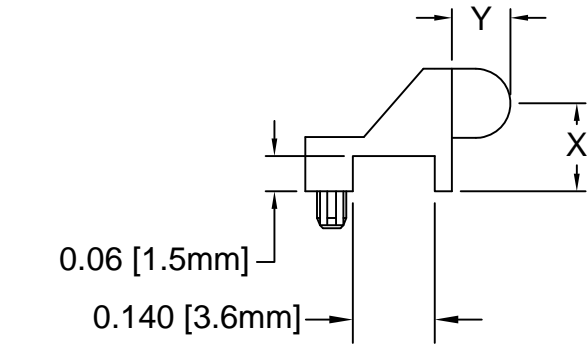
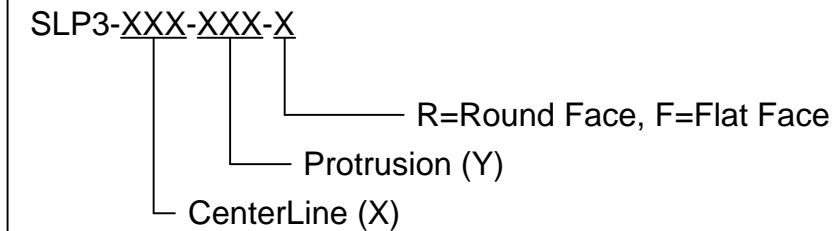


REV.	DESCRIPTION	DATE	APPROVED
D	Title Revision	03/06/12	T. Y.
E	Added Part Offering List & Removed Raw Material Notes	10/11/13	G. W.
F	Added P/Ns onto Offering List	10/31/13	G. W.
G	Edit Dimension Typo on Part Offering List, page 3	11/25/13	G. W.
H	Added Color Options, Sheet #4	02/02/16	J. C.



PART NUMBER DESIGNATION



3. ALL DIMENSIONS IN INCHES UNLESS OTHERWISE SPECIFIED
2. MATERIAL: POLYCARBONATE, 94V-0, CLEAR.
1. GENERAL SPECIFICATIONS: BIVAR MOLDED COMPONENT SPECIFICATION BV00-E101.

STANDARD TOLERANCE (UNLESS OTHERWISE SPECIFIED)	
DECIMALS	ANGULAR
.X ± .1	X° ± 1°
.XX ± .01	
.XXX ± .005	

**BIVAR**®

4 THOMAS, IRVINE, CA. 92618  
TEL: (949) 951-8808 FAX: (949) 951-3974

TITLE: LIGHT PIPE  
90° VARIABLE CENTERLINE


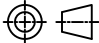
DESIGNED: <b>Michael Chen</b>	DATE: <b>04/14/03</b>
CHECKED: <b>D. Green</b>	DATE: <b>04/14/03</b>

PART NO: <b>SLP3-XXX-XXX-X</b>	REVISION: <b>H</b>
CAGE CODE : <b>32559</b>	SHEET # <b>1 OF 4</b>
CAD GENERATED DOCUMENT. DO NOT MEASURE DRAWING.	

REV.	DESCRIPTION	DATE	APPROVED
	SEE SHEET #1		

STANDARD OFFERING LIST


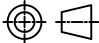
PART NUMBER	X DIMENSION	Y DIMENSION	FACE
SLP3-200-100-F	0.200"[5.1mm]	0.100" [2.5mm]	FLAT FACE
SLP3-200-100-R	0.200"[5.1mm]	0.100" [2.5mm]	ROUND FACE
SLP3-200-150-F	0.200"[5.1mm]	0.150"[3.8mm]	FLAT FACE
SLP3-200-150-R	0.200"[5.1mm]	0.150"[3.8mm]	ROUND FACE
SLP3-200-200-R	0.200"[5.1mm]	0.200"[5.1mm]	ROUND FACE
SLP3-200-250-F	0.200"[5.1mm]	0.250"[6.4mm]	FLAT FACE
SLP3-250-100-F	0.250"[6.35mm]	0.100" [2.5mm]	FLAT FACE
SLP3-250-100-R	0.250"[6.35mm]	0.100" [2.5mm]	ROUND FACE
SLP3-300-100-F	0.300"[7.6mm]	0.100" [2.5mm]	FLAT FACE
SLP3-300-100-R	0.300"[7.6mm]	0.100" [2.5mm]	ROUND FACE
SLP3-300-250-F	0.300"[7.6mm]	0.250"[6.4mm]	FLAT FACE
SLP3-300-250-R	0.300"[7.6mm]	0.250"[6.4mm]	ROUND FACE
SLP3-300-450-F	0.300"[7.6mm]	0.450"[11.4mm]	FLAT FACE
SLP3-300-450-R	0.300"[7.6mm]	0.450"[11.4mm]	ROUND FACE
SLP3-350-100-F	0.350"[8.9mm]	0.100" [2.5mm]	FLAT FACE
SLP3-350-100-R	0.350"[8.9mm]	0.100" [2.5mm]	ROUND FACE

STANDARD TOLERANCE ( UNLESS OTHERWISE SPECIFIED )		 4 THOMAS, IRVINE, CA. 92618 TEL: (949) 951-8808 FAX: (949) 951-3974			
DECIMALS	ANGULAR				
.X ± .1	X° ± 1°	 <b>TITLE:</b> LIGHT PIPE 90° VARIABLE CENTERLINE			
.XX ± .01					
.XXX ± .005		DESIGNED: <b>Michael Chen</b>	DATE: <b>04/14/03</b>	PART NO: <b>SLP3-XXX-XXX-X</b>	REVISION: <b>H</b>
		CHECKED: <b>D. Green</b>	DATE: <b>04/14/03</b>	CAGE CODE : <b>32559</b>	SHEET # <b>2</b> OF <b>4</b>
CAD GENERATED DOCUMENT. DO NOT MEASURE DRAWING.					

REV.	DESCRIPTION	DATE	APPROVED
	SEE SHEET #1		

### STANDARD OFFERING LIST

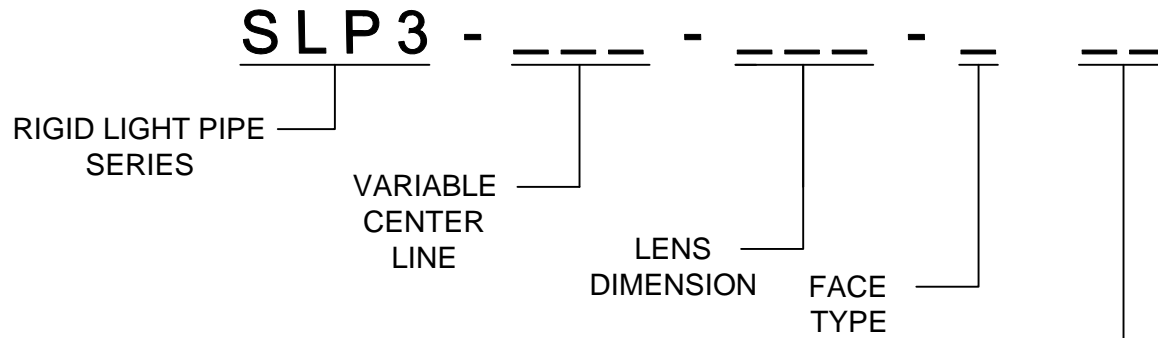
PART NUMBER	X DIMENSION	Y DIMENSION	FACE
SLP3-400-100-F	0.400" [10.2mm]	0.100" [2.5mm]	FLAT FACE
SLP3-400-100-R	0.400" [10.2mm]	0.100" [2.5mm]	ROUND FACE
SLP3-400-250-F	0.400" [10.2mm]	0.250" [6.4mm]	FLAT FACE
SLP3-400-450-R	0.400" [10.2mm]	0.450" [11.4mm]	ROUND FACE
SLP3-450-100-F	0.450" [11.4mm]	0.100" [2.5mm]	FLAT FACE
SLP3-450-100-R	0.450" [11.4mm]	0.100" [2.5mm]	ROUND FACE
SLP3-500-100-F	0.500" [12.7mm]	0.100" [2.5mm]	FLAT FACE
SLP3-500-100-R	0.500" [12.7mm]	0.100" [2.5mm]	ROUND FACE
SLP3-500-250-F	0.500" [12.7mm]	0.250" [6.4mm]	FLAT FACE
SLP3-500-250-R	0.500" [12.7mm]	0.250" [6.4mm]	ROUND FACE
SLP3-500-400-R	0.500" [12.7mm]	0.400" [10.2mm]	ROUND FACE
SLP3-500-450-R	0.500" [12.7mm]	0.450" [11.4mm]	ROUND FACE
SLP3-550-100-F	0.550" [14.00mm]	0.100" [2.5mm]	FLAT FACE
SLP3-550-100-R	0.550" [14.00mm]	0.100" [2.5mm]	ROUND FACE
SLP3-600-100-F	0.600" [15.2mm]	0.100" [2.5mm]	FLAT FACE
SLP3-600-100-R	0.600" [15.2mm]	0.100" [2.5mm]	ROUND FACE
SLP3-600-450-R	0.600" [15.2mm]	0.450" [11.4mm]	ROUND FACE
SLP3-650-100-F	0.650" [16.5mm]	0.100" [2.5mm]	FLAT FACE
SLP3-650-100-R	0.650" [16.5mm]	0.100" [2.5mm]	ROUND FACE
SLP3-700-100-F	0.700" [17.8mm]	0.100" [2.5mm]	FLAT FACE
SLP3-700-100-R	0.700" [17.8mm]	0.100" [2.5mm]	ROUND FACE
SLP3-700-450-R	0.700" [17.8mm]	0.450" [11.4mm]	ROUND FACE

STANDARD TOLERANCE ( UNLESS OTHERWISE SPECIFIED )		 4 THOMAS, IRVINE, CA. 92618 TEL: (949) 951-8808 FAX: (949) 951-3974			
DECIMALS	ANGULAR				
.X ± .1	X° ± 1°	 <b>TITLE:</b> LIGHT PIPE 90° VARIABLE CENTERLINE			
.XX ± .01					
.XXX ± .005		DESIGNED: <b>Michael Chen</b>	DATE: <b>04/14/03</b>	PART NO: <b>SLP3-XXX-XXX-X</b>	REVISION: <b>H</b>
		CHECKED: <b>D. Green</b>	DATE: <b>04/14/03</b>	CAGE CODE : <b>32559</b>	SHEET # <b>3 OF 4</b>
CAD GENERATED DOCUMENT. DO NOT MEASURE DRAWING.					

**OTHER AVAILABLE COLORS**

\* SEE TABLE FOR ORDERING INFORMATION


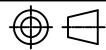
REV.	DESCRIPTION	DATE	APPROVED
	SEE SHEET #1		



COLOR	Order Code
BLUE	BE
BLACK	BK
GREEN	GN
GRAY	GY
RED	RD
YELLOW	YW

NOTE: LEAVE ORDER CODE BLANK IF NO COLOR IS DESIRED.

4. PARTS ARE DYED TO COLOR UPON REQUEST.

STANDARD TOLERANCE ( UNLESS OTHERWISE SPECIFIED ) DECIMALS      ANGULAR		 4 THOMAS, IRVINE, CA. 92618 TEL: (949) 951-8808    FAX: (949) 951-3974	
			
DESIGNED: <b>K. Aukshunas</b>	DATE: <b>01/25/16</b>	<b>TITLE:</b> LIGHT PIPE 90° VARIABLE CENTERLINE	
CHECKED: <b>J. Chiang</b>	DATE: <b>01/25/16</b>	<b>PART NO:</b> SLP3-XXX-XXX-X	REVISION: <b>H</b>
		<b>CAGE CODE :</b> 32559	<b>SHEET #</b> 4 OF 4
CAD GENERATED DOCUMENT. DO NOT MEASURE DRAWING.			