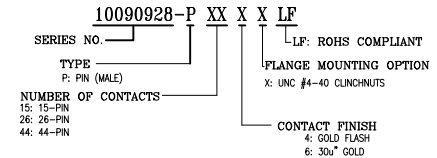


FOR 15P

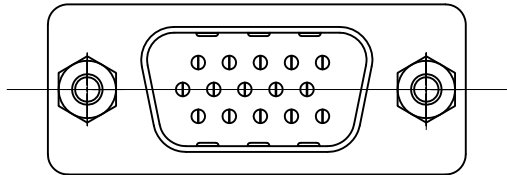
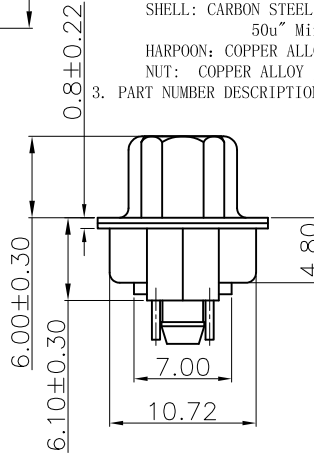
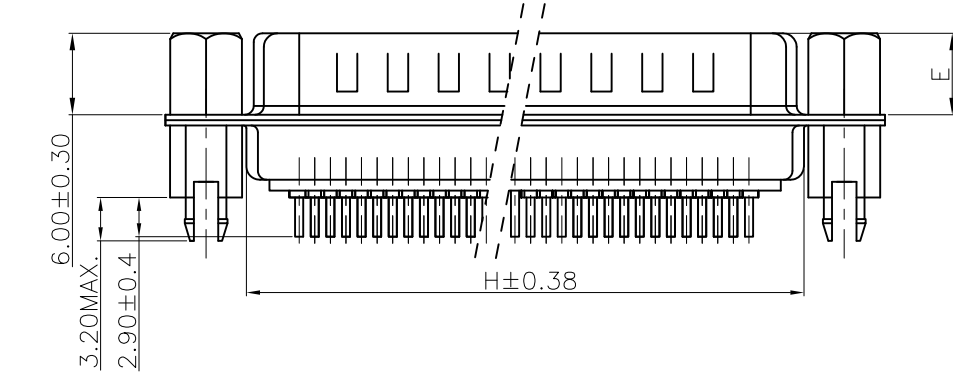
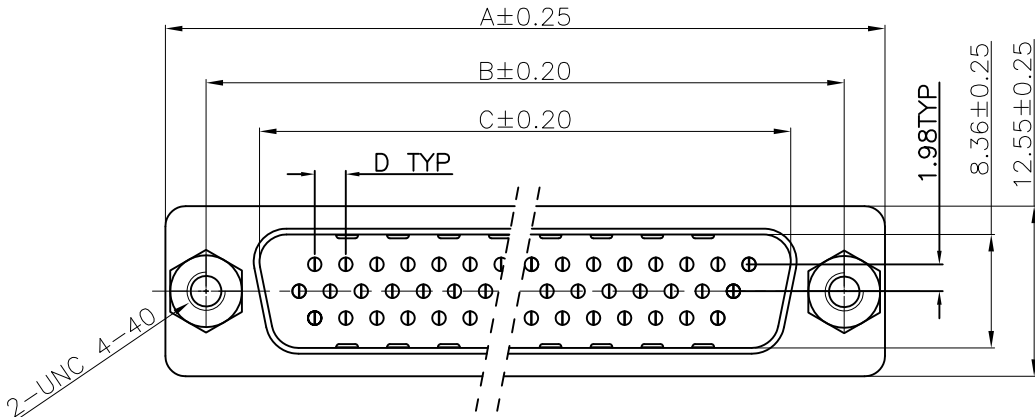
REMARK:
 1. CHARACTERISTICS:
 RATED VOLTAGE: 250V
 RATED CURRENT: 2.5AMP
 CONTACT RESISTANCE: 25mohms MAX. INITIAL,
 40mohms MAX. AFTER.
 INSULATION RESISTANCE: 5000Mohms MIN. at 500V DC
 DIELECTRIC STRENGTH: 750VRMS
 OPERATING TEMPERATURE RANGE: -55° C~105° C
 INSERTION/EXTRACTION FORCE PER CONTACT: 5N Max./0.2N Min..
 MATING/UNMATING CYCLES: 200MATINGS MIN FOR GOLD-FLASH
 500MATINGS MIN FOR 30u" GOLD.
 2. MATERIAL:
 INSULATORS: THERMOPLASTIC G.F(UL94V-0) BLACK
 CONTACTS: COPPER ALLOY, GOLD(G/F or 30u") TOP OVER CONTACT
 AREA, 100u" Min MATTE TIN TOP OVER SOLDER AREA,
 50u" Min NICKEL UNDER PLATE.
 SHELL: CARBON STEEL, 100u" Min NICKEL TOP OVER,
 50u" Min COPPER UNDER PLATE.
 HARPOON: COPPER ALLOY , 100u" Min MATTE TIN PLATED.
 3. PART NUMBER DESCRIPTION:



POS.	PART NO.	THREAD TYPE
15	10090928-P15*XLF	UNC #4-40
26	10090928-P26*XLF	UNC #4-40
44	10090928-P44*XLF	UNC #4-40

POS.	A	B	C	D	E	H
15	30.81	24.99	16.92	2.29	5.90 ^{+0.25} ₀	19.10
26	39.24	33.32	25.25	2.29	5.90 ^{+0.25} ₀	27.75
44	53.04	47.04	38.96	2.29	5.70 ^{+0.25} ₀	41.30

mat'l. code		-		surface	ISO 1302	tolerance	ISO 406 ISO 1101	projection	product family	D-SUB	
ltr	ecn no	dr	date	tolerances unless otherwise specified							
E	ELX-I-20972	AB	2015/05/30	angles	Lineal	.0±.38		MM	title H/D D-SUB MALE STRAIGHT		
						.00±.25					
				0°±2'		.000±.010		scale 2:1	sheet 1 of 3 size 10090928 A4		
				dr	JASON.HSU	12/10/09		FCI			
				enr	ALIAS.BABU	2015/05/30					
				chr	MITHUN.PAUL	2015/05/30					
				appd	BIJU.K.PAUL	2015/05/30					
sheet index	revision sheet	E	E	E							
	1	2	3								



FOR 15P

REMARK:

1. CHARACTERISTICS:

RATED VOLTAGE: 250V
 RATED CURRENT: 2.5AMP
 CONTACT RESISTANCE: 25mohms MAX. INITIAL,
 40mohms MAX. AFTER.
 INSULATION RESISTANCE: 5000Mohms MIN. at 500V DC
 DIELECTRIC STRENGTH: 750VRMS
 OPERATING TEMPERATURE RANGE: -55° C~105° C
 INSERTION/EXTRACTION FORCE PER CONTACT: 5N Max./0.2N Min.
 MATING/UNMATING CYCLES: 200MATINGS MIN FOR GOLD-FLASH
 500MATINGS MIN FOR 30u" GOLD.

2. MATERIAL:

INSULATORS: THERMOPLASTIC G.F(UL94V-0) BLACK
 CONTACTS: COPPER ALLOY, GOLD(G/F or 30u") TOP OVER CONTACT
 AREA, 100u" Min MATTE TIN TOP OVER SOLDER AREA,
 50u" Min NICKEL UNDER PLATE.
 SHELL: CARBON STEEL, 100u" Min NICKEL TOP OVER,
 50u" Min COPPER UNDER PLATE.
 HARPOON: COPPER ALLOY, 100u" Min MATTE TIN PLATED.
 NUT: COPPER ALLOY, 50u" Min NICKEL PLATED.

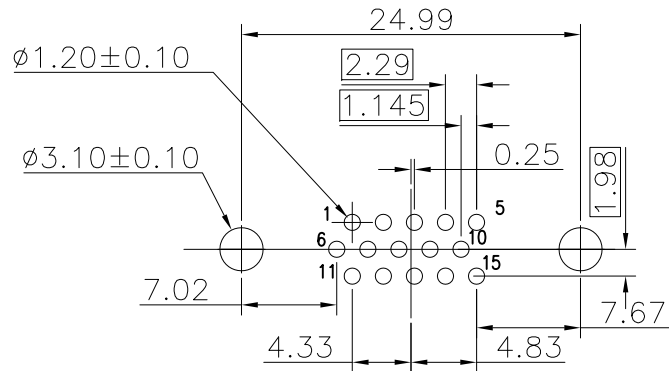
3. PART NUMBER DESCRIPTION:

10090928-P XX X V LF
 SERIES NO. _____ L F: ROHS COMPLIANT
 TYPE _____ P: PIN (MALE) _____ FLANGE MOUNTING OPTION
 NUMBER OF CONTACTS _____ V: UNC #4-40 SCREWLOCKS
 CONTACT FINISH
 4: GOLD FLASH
 6: 30u" GOLD

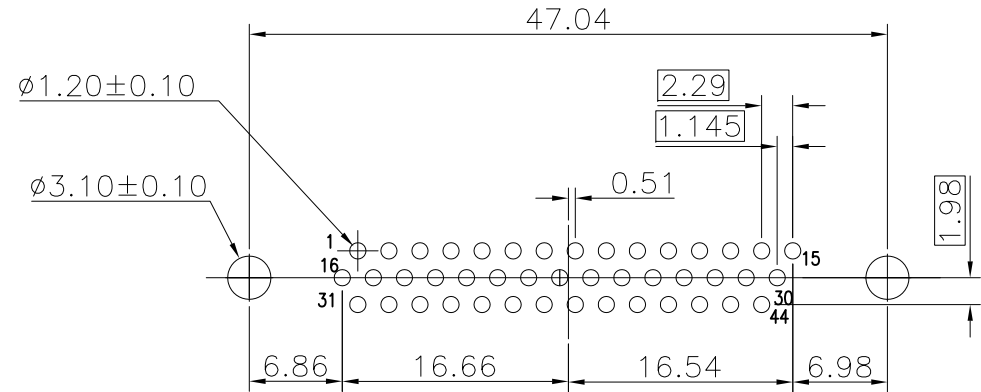
POS.	PART NO.
15	10090928-P15*VLF
26	10090928-P26*VLF
44	10090928-P44*VLF

POS.	A	B	C	D	E	H
15	30.81	24.99	16.92	2.29	5.90 ^{+0.25}	19.10
26	39.24	33.32	25.25	2.29	5.90 ^{+0.25}	27.75
44	53.04	47.04	38.96	2.29	5.70 ^{+0.25}	41.30

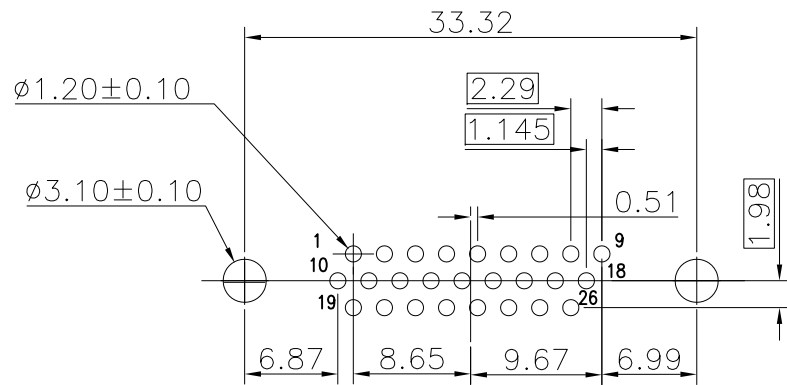
mat'l. code		surface		tolerance		projection		product family	
-		ISO 1302		ISO 406 ISO 1101		MM		D-SUB	
ltr		ecn no		dr		date		title	
E								H/D D-SUB MALE STRAIGHT	
				angles		Linear		dwg no	
				0±2°		.000±.010		sheet 2 of 3	
		dr		engr		chr		size	
		JASON.HSU		ALIAS.BABU		MITHUN.PAUL		A4	
		12/10/09		2015/05/30		2015/05/30		10090928	
		appd		BIJU.K.PAUL		2015/05/30		type	
		sheet		revision				PRODUCT_CUSTOMER DRAWING	
index		sheet							



P.C.B LAYOUT (FOR 15P)



P.C.B LAYOUT (FOR 44P)



P.C.B LAYOUT (FOR 26P)

mat'l. code		-		surface		ISO 1302 <input checked="" type="checkbox"/> ISO 406 ISO 1101		projection		product family	
ltr		ecn no		dr		date		tolerances unless otherwise specified		D-SUB	
E								MM		title	
								scale 2:1		H/D D-SUB MALE STRAIGHT	
								FCI		sheet 3 of 3 size	
				dr		JASON.HSU 12/10/09				10090928	
				enr		ALIAS.BABU 2015/05/30				A4	
				chr		MITHUN.PAUL 2015/05/30				type	
				appd		BIJU.K.PAUL 2015/05/30				PRODUCT_CUSTOMER DRAWING	
sheet index		revision sheet									