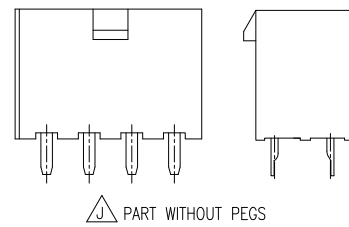
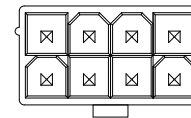
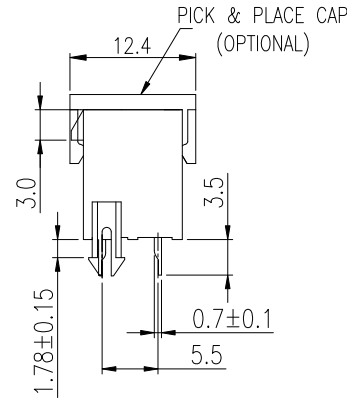
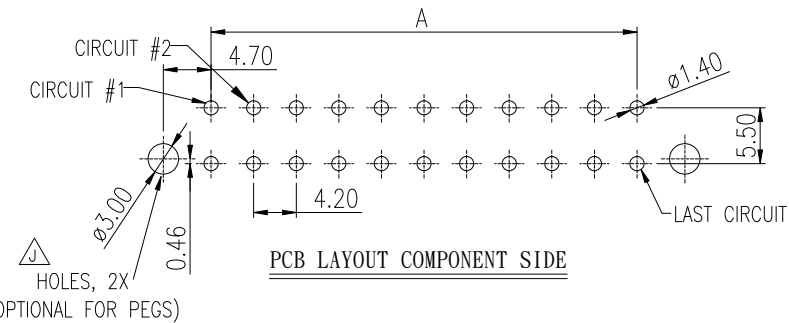
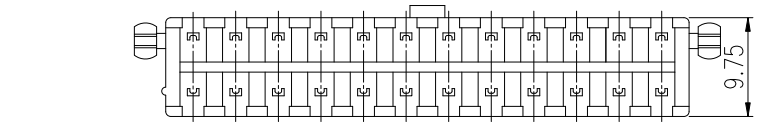
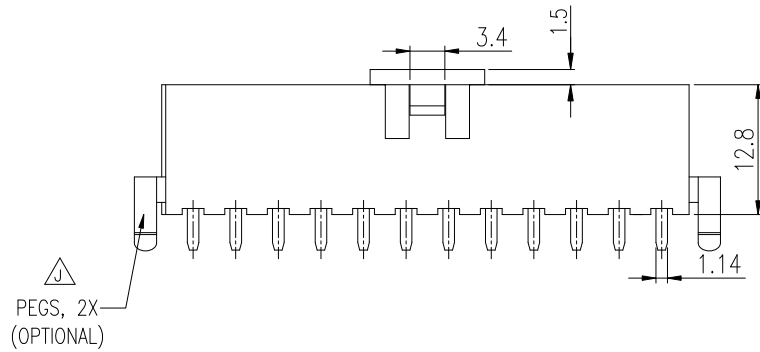
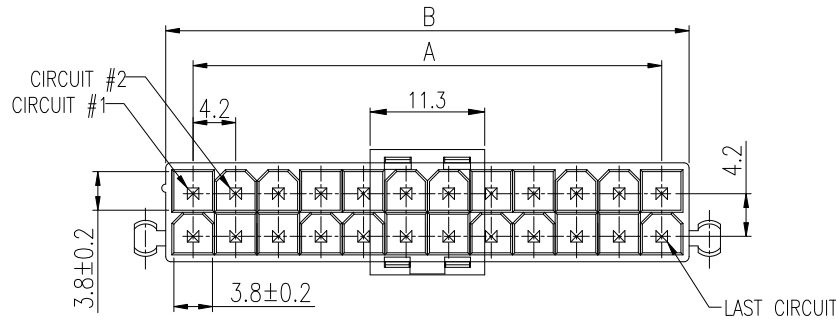


PRODUCT NUMBER
SEE PART NO. TABLE



NOTES:

- MATERIAL:
HSG: OPTIONAL, UL94V-0.
COLOR: NATURAL.
TERMINAL: BRASS.
PLATING: OPTIONAL ON CONTACT AREA.
PICK & PLACE CAP: HIGH TEMP. THERMOPLASTIC
- THIS PLUG MATES WITH FCI RECEPTACLE WIRE CONNECTOR 10127815.
- PRODUCT SPECIFICATION: GS-12-1181.
- PACKAGE SPECIFICATION: GS-14-2362.
- THE HOUSING WILL WITHSTAND EXPOSURE TO 235°C PEAK TEMPERATURE FOR 5 SECONDS IN A WAVE SOLDER APPLICATION WITH A 1.6mm MINIMUM THICK CIRCUIT BOARD. (FOR PA66)
THE HOUSING WILL WITHSTAND EXPOSURE TO 260 °C PEAK TEMPERATURE FOR 10 SECONDS IN A REFLOW OVEN. (FOR LCP ONLY)
- PART NUMBER SCHEME:

10127820- XX X X X X X LF

POS. CODE:
02: 2 POS.
04: 4 POS.
24: 24 POS.

TERMINAL MATERIAL:
2: BRASS

PLATING CODE:
1: GOLD FLASH
2: TIN

CAP: (NOT APPLICABLE FOR 2 POS.)
BLANK: NO CAP, TRAY PACKAGE
C: WITH CAP, TAPE/REEL PACKAGE

PEG:
BLANK: NO PEG
P: 2 PEGS

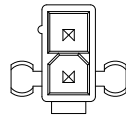
GLOW WIRE COMPATIBLE:
BLANK: PA66, NON COMPATIBLE
G: PA66, COMPATIBLE
L: LCP, COMPATIBLE

7. DIMENSIONAL & PART NO. TABLE:

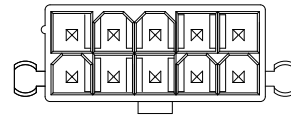
PART NUMBER	POS.	A	B
10127820-02XXXXLF	02		5.4
10127820-04XXXXLF	04	4.2	9.6
10127820-06XXXXLF	06	8.4	13.8
10127820-08XXXXLF	08	12.6	18.0
10127820-10XXXXLF	10	16.8	22.2
10127820-12XXXXLF	12	21.0	26.4
10127820-14XXXXLF	14	25.2	30.6
10127820-16XXXXLF	16	29.4	34.8
10127820-18XXXXLF	18	33.6	39.0
10127820-20XXXXLF	20	37.8	43.2
10127820-22XXXXLF	22	42.0	47.4
10127820-24XXXXLF	24	46.2	51.6

mat'l. code		surface		tolerance	projection	product family	
ltr		ecn no	dr	date	tolerances unless otherwise specified		Minitek Pwr4.2
H	ELX-T-20468	TAI		2015-03-16	angles	X.X ±0.4	title
J	ELX-T-21113	TAI		2015-06-09	in/out	X.XX ±0.3	
					"±1"		MINITEK PWR4.2, WT B HEADER, DUAL ROW, VERTICAL, DIP TYPE
					scale		dwg no
D	ELX-T-17526	TAI	dr	2014-04-17	KENNY TAI	2013-11-11	
E	ELX-T-17590	TAI	enr	2014-04-29	KENNY TAI	2013-11-11	size
F	ELX-T-19251	TAI	chr	2014-10-31	KENNY TAI	2013-11-11	A4
G	ELX-T-20255	TAI	appd	2015-02-12	PM ZHENG	2013-11-22	10127820
sheet		revision	J	J			type
index	sheet		1	2			CUSTOMER Drawing

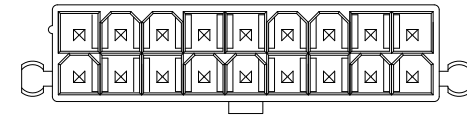




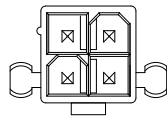
2 POS



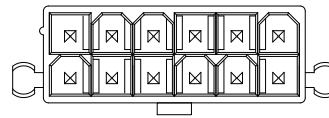
10 POS



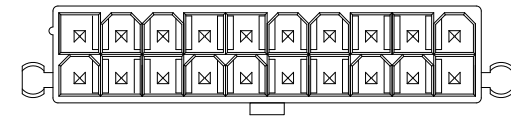
18 POS



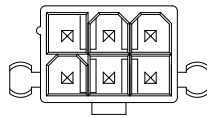
4 POS



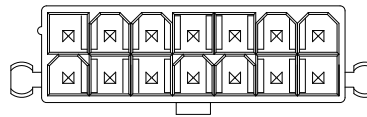
12 POS



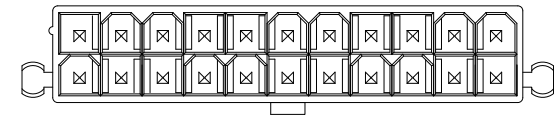
20 POS



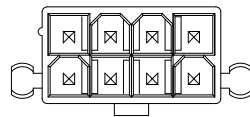
6 POS



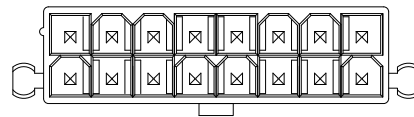
14 POS



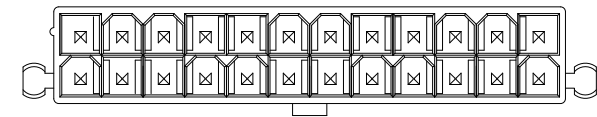
22 POS



8 POS



16 POS



24 POS

mat'l. code		surface <input checked="" type="checkbox"/>		tolerance		projection		product family Minitek Pwr4.2	
ltr		ecn no		dr		date		title	
								MINITEK PWR4.2, WTB HEADER, DUAL ROW, VERTICAL, DIP TYPE	
								scale	
								dwg no	
								sheet 2 of 2	
								size	
								A4	
								type	
								CUSTOMER Drawing	
sheet index		revision sheet		J 1		J 2			

