

4

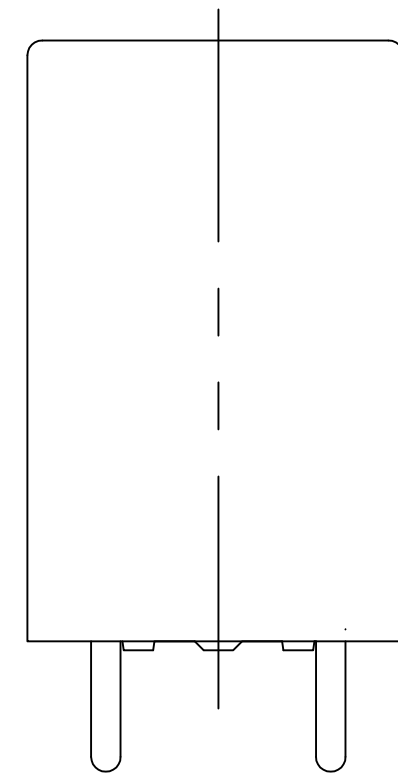
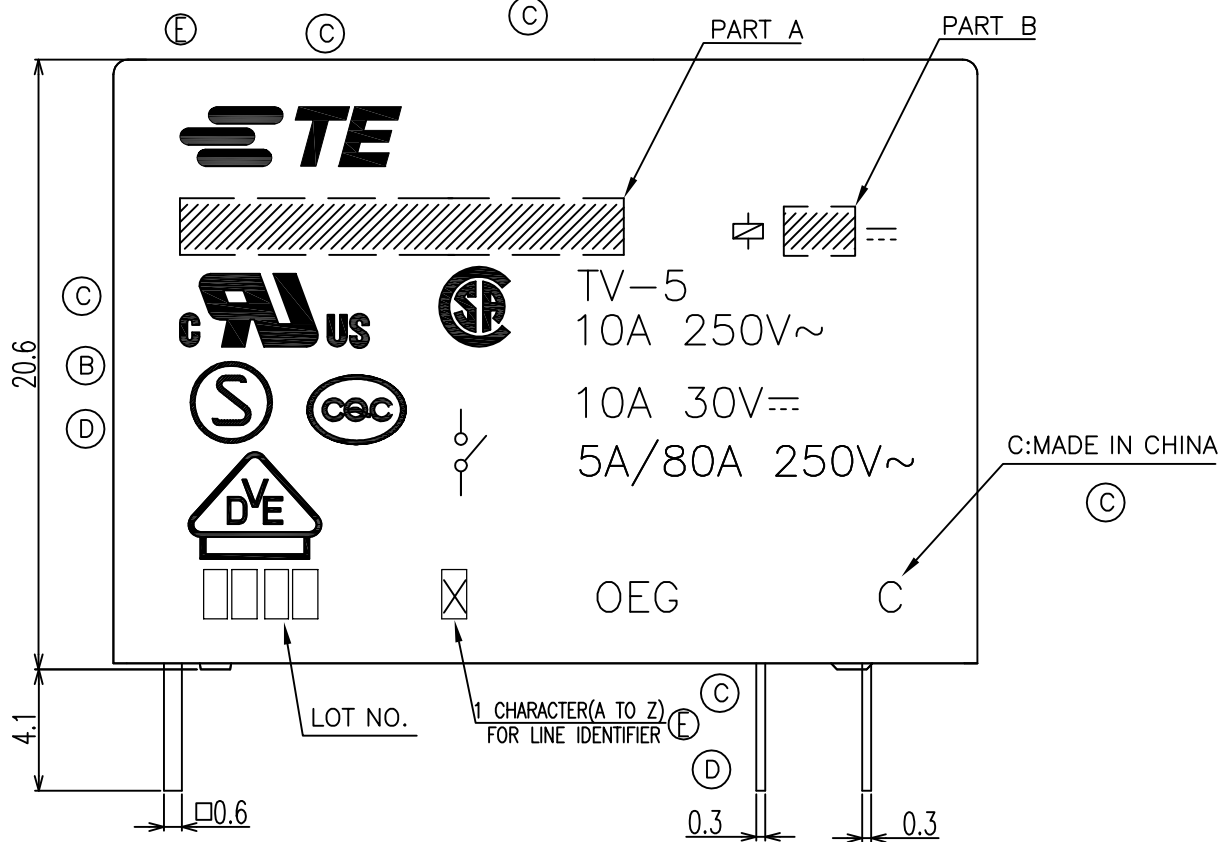
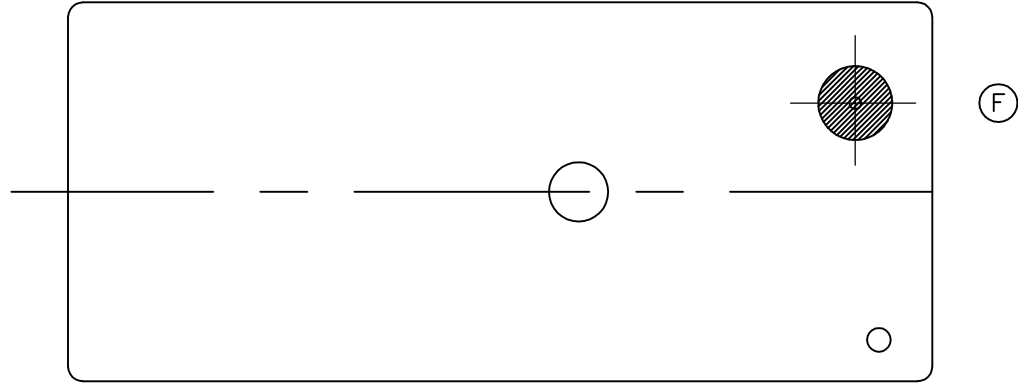
3

2

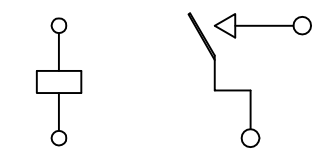
1

THIS DRAWING IS UNPUBLISHED. RELEASED FOR PUBLICATION
 © COPYRIGHT - By TE Connectivity ALL RIGHTS RESERVED.

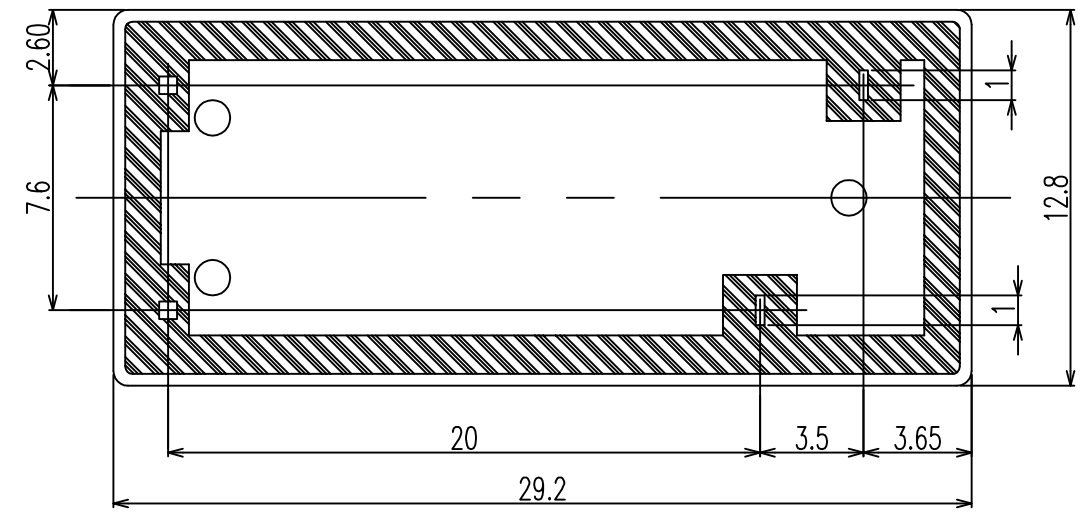
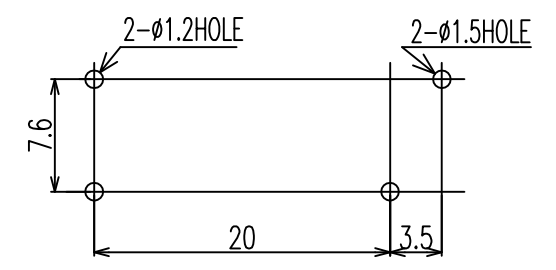
LOC	DIST	REVISIONS			
P	LTR	DESCRIPTION	DATE	DWN	APVD
HB	-	1.UPDATE TE LOGO&VDE LOGO2.ADD LINE IDENTIFICATION 3.TERMINALS TOLERANCE CLARIFICATION4.VENT HOLE CHANGE	ECO-12-005726	06-APR-12	D.L BH.Y
		F REVISE ONLY	ECO-13-015347	16-DEC-13	XL,Y B,F



CONNECTION DIAGRAM (BOTTOM VIEW)



DRILLING DIAGRAM(2/1) (BOTTOM VIEW)



THIS DRAWING IS A CONTROLLED DOCUMENT.		DWN FU.BO			
DIMENSIONS: mm		CHK ZHANG.XIAONING			
TOLERANCES UNLESS OTHERWISE SPECIFIED:		APVD C.H.HSU	NAME OMIT CUSTOMER DRAWING		
0 PLC ±- 1 PLC ±- 2 PLC ±- 3 PLC ±- 4 PLC ±- ANGLES ±-		PRODUCT SPEC -	APPLICATION SPEC -		
MATERIAL -		FINISH -	WEIGHT -	SIZE A3	CAGE CODE 00779
CUSTOMER DRAWING			DRAWING NO C=9-1440000-6	RESTRICTED TO -	SCALE 4:1
			SHEET 1 of 2	REV F	

THIS DRAWING IS UNPUBLISHED.

RELEASED FOR PUBLICATION

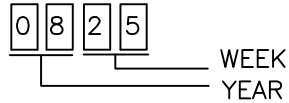
© COPYRIGHT - By TE Connectivity

ALL RIGHTS RESERVED.

LOC	DIST	REVISIONS					
HB	-	P	LTR	DESCRIPTION	DATE	DWN	APVD
		-		SEE SHEET 1	-	-	-

NOTES:

Ⓑ 1.LOT NO. SYSTEM AS FOLLOING:



2.GENERAL TOLERANCE AS FOLLOING:

TOLERANCE	
0~0.99mm	±0.1
1mm~2.99mm	±0.2
3mm MIN.	±0.3

Ⓒ 3.TERMINAL DIMENSION IS NOT INCLUDING SOLDER TIP.

Ⓔ 4.FOR THE TIN-PLATING OF THE PINS:
+0.1mm FOR WIDTH,THICKNESS AND DIAMETER.
+0.5mm FOR LENGTH.

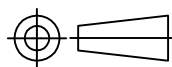
2-1461387-3	OMIT-SH-148LM	48V	OMIT-SH-148LM
2-1461387-1	OMIT-SH-148DM	48V	OMIT-SH-148DM
1-1461387-9	OMIT-SH-124LM	24V	OMIT-SH-124LM
1-1461387-7	OMIT-SH-124DM	24V	OMIT-SH-124DM
9-1440000-6	OMIT-SH-112LM	12V	OMIT-SH-112LM
1-1461387-4	OMIT-SH-112DM	12V	OMIT-SH-112DM
1-1461387-2	OMIT-SH-109LM	9V	OMIT-SH-109LM
1-1461387-0	OMIT-SH-109DM	9V	OMIT-SH-109DM
1461387-8	OMIT-SH-106LM	6V	OMIT-SH-106LM
1461387-6	OMIT-SH-106DM	6V	OMIT-SH-106DM
1461387-4	OMIT-SH-105LM	5V	OMIT-SH-105LM
1461387-2	OMIT-SH-105DM	5V	OMIT-SH-105DM
TE PART NO	DESCRIPTION	PART B	PART A

RELAY TYPE

		UV RESIN	UV SEAL	16
		EPOXY RESIN	SEAL	15
UL94 V-0		PBT	CASE	14
CLASS E		UEW	MAGNETIC WIRE	13
UL94 V-0		PET	BASE	12
UL94 V-0		PBT	BOBBIN	11
	SOLDER DIP	CP WIRE	COIL TERMINAL	10
UL94 V-0		PPS	CARD	9
		Ag ALLOY	MOVABLE CONTACT	8
		Ag ALLOY	STATIONARY CONTACT	7
		Cu ALLOY	HINGE SPRING	6
	SOLDER DIP	Cu ALLOY	STATIONARY TERMINAL	5
	SOLDER DIP	Cu ALLOY	MOVABLE SPRING	4
		STEEL	CORE	3
		STEEL	ARMATURE	2
		STEEL	YOKE	1
INCOMBUSTIBILITY	TREATMENT	MATERIAL	DESCRIPTION	ITEM

THIS DRAWING IS A CONTROLLED DOCUMENT.

DIMENSIONS:
mm



TOLERANCES UNLESS OTHERWISE SPECIFIED:

- 0 PLC ± -
- 1 PLC ± -
- 2 PLC ± -
- 3 PLC ± -
- 4 PLC ± -
- ANGLES ± -
- FINISH -

MATERIAL

FINISH

DWN FU.BO

CHK ZHANG.XIAONING

APVD C.H.HSU

PRODUCT SPEC

APPLICATION SPEC

WEIGHT -

CUSTOMER DRAWING



NAME

OMIT CUSTOMER DRAWING

SIZE

CAGE CODE

DRAWING NO

RESTRICTED TO

A3

00779

C=9-1440000-6

SCALE 4:1

SHEET 2 of 2

REV F