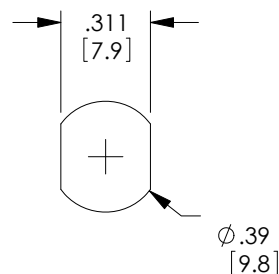
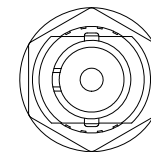
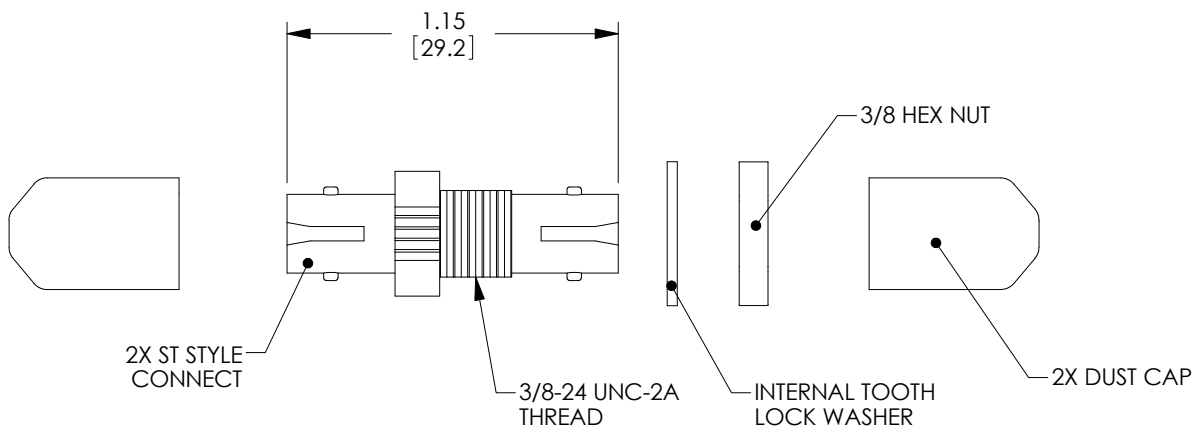


THE INFORMATION CONTAINED IN THIS DRAWING IS THE SOLE PROPERTY OF L-COM, INC. ANY REPRODUCTION IN PART OR WHOLE WITHOUT THE WRITTEN PERMISSION OF L-COM, INC. IS PROHIBITED.

REVISIONS			
REV	DESCRIPTION	DATE	APPROVED
A	DRAWING REPLACES FOA-001A-OD1	6/26/14	D.FRISIELLO



NOTES:

MATERIALS:
 BODY: ZINC ALLOY
 SLEEVE: CERAMIC
 LOCK WASHER: STEEL
 NUT: S50C, CARBON STEEL
 RETENTION WASHER: ZINC ALLOY
 DUST CAP: PVC

FINISH:
 BODY: NICKEL PLATED
 LOCK WASHER: NICKEL PLATED
 NUT: NICKEL PLATED
 RETENTION WASHER: NICKEL PLATED

ALL DIMENSIONS ARE FOR REFERENCE ONLY.

COMPONENT SHALL BE INDIVIDUALLY PACKAGED IN ACCORDANCE WITH L-COM SPECIFICATION PS-0031.

REGULATORY COMPLIANCE:
 CE2011/65/EU (RoHS DIRECTIVE)

UNLESS OTHERWISE SPECIFIED, DIMENSIONS ARE IN INCHES [mm] OVERALL CABLE LENGTH TOLERANCE: ≤12 [305] = +1 [25] / -0 >12 [305] ≤60 [1524] = +2 [51] / -0 >60 [1524] ≤120 [3048] = +4 [102] / -0 >120 [3048] ≤300 [7620] = +6 [152] / -0 >300 [7620] = +5% / -0% ALL OTHER DIMENSIONAL TOLERANCES: .X = ±.2 [5.08] .XX = ±.02 [51] .XXX = ±.005 [1.27]	APPROVALS DRAWN BY C.MCCORMICK	DATE 12/28/2000		45 BEECHWOOD DRIVE NORTH ANDOVER, MA 01845	
	CHECKED BY D.PARHAM	01/12/2000		CATEGORY FIBER OPTICS	
	APPROVED BY R.CARRICK	01/12/2000	PRODUCT DESCRIPTION ADPTR,ST-ST SMLPX CERAMIC		
	PROJECTION 	COLOR VARIATIONS MAY OCCUR	SIZE A	FSCM NO. 43321	DWG. NO. FOA-001A
SCALE: NONE			CAD FILE: FOA-001A.SLDDRW		SHEET 1 OF 1