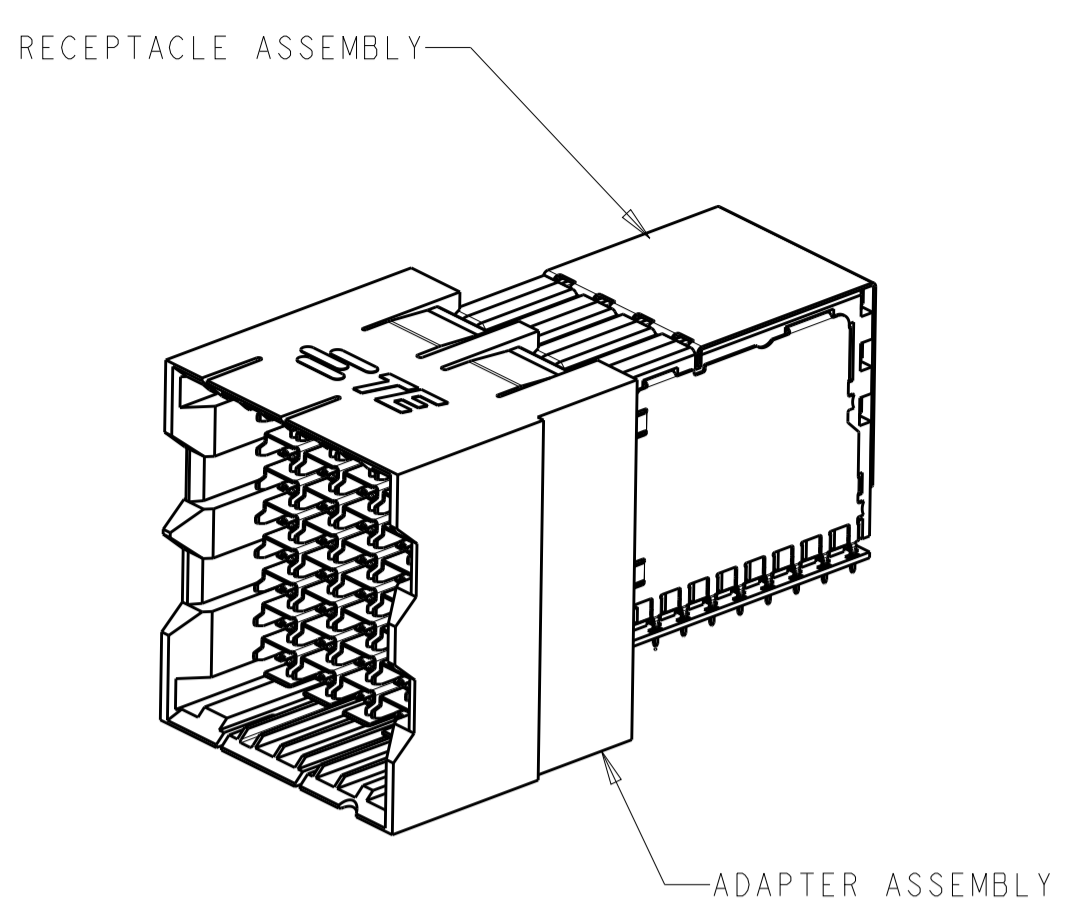
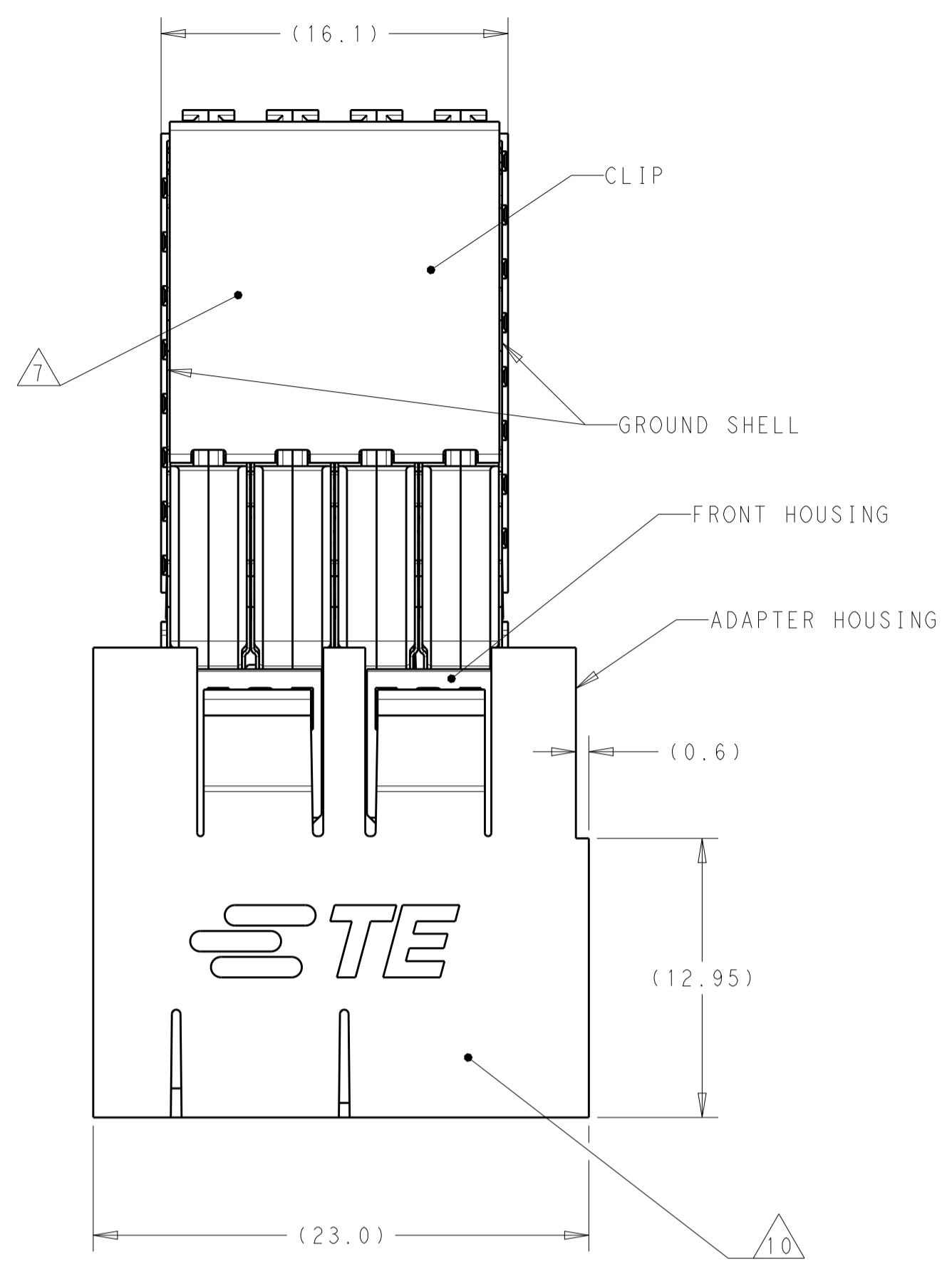
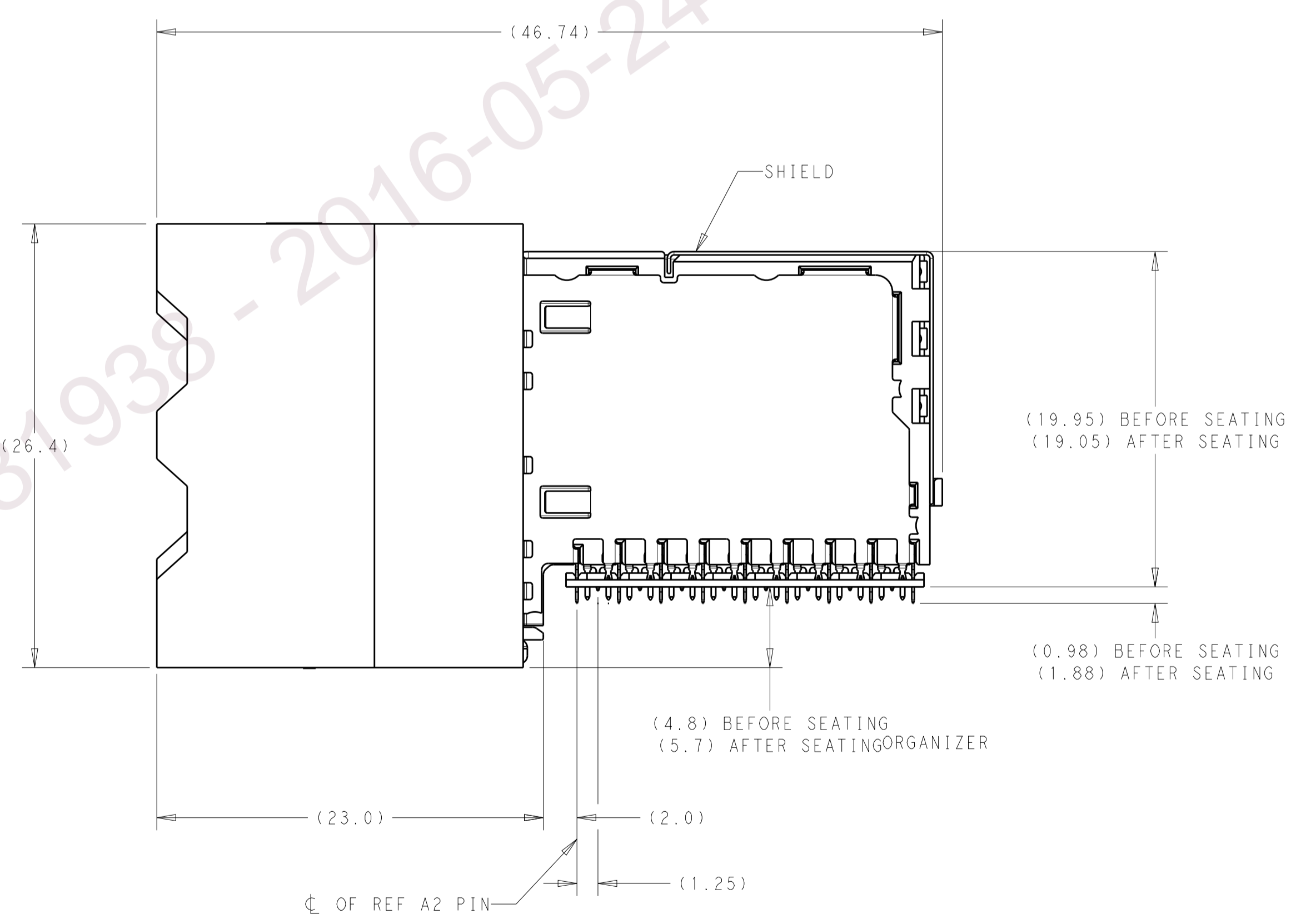
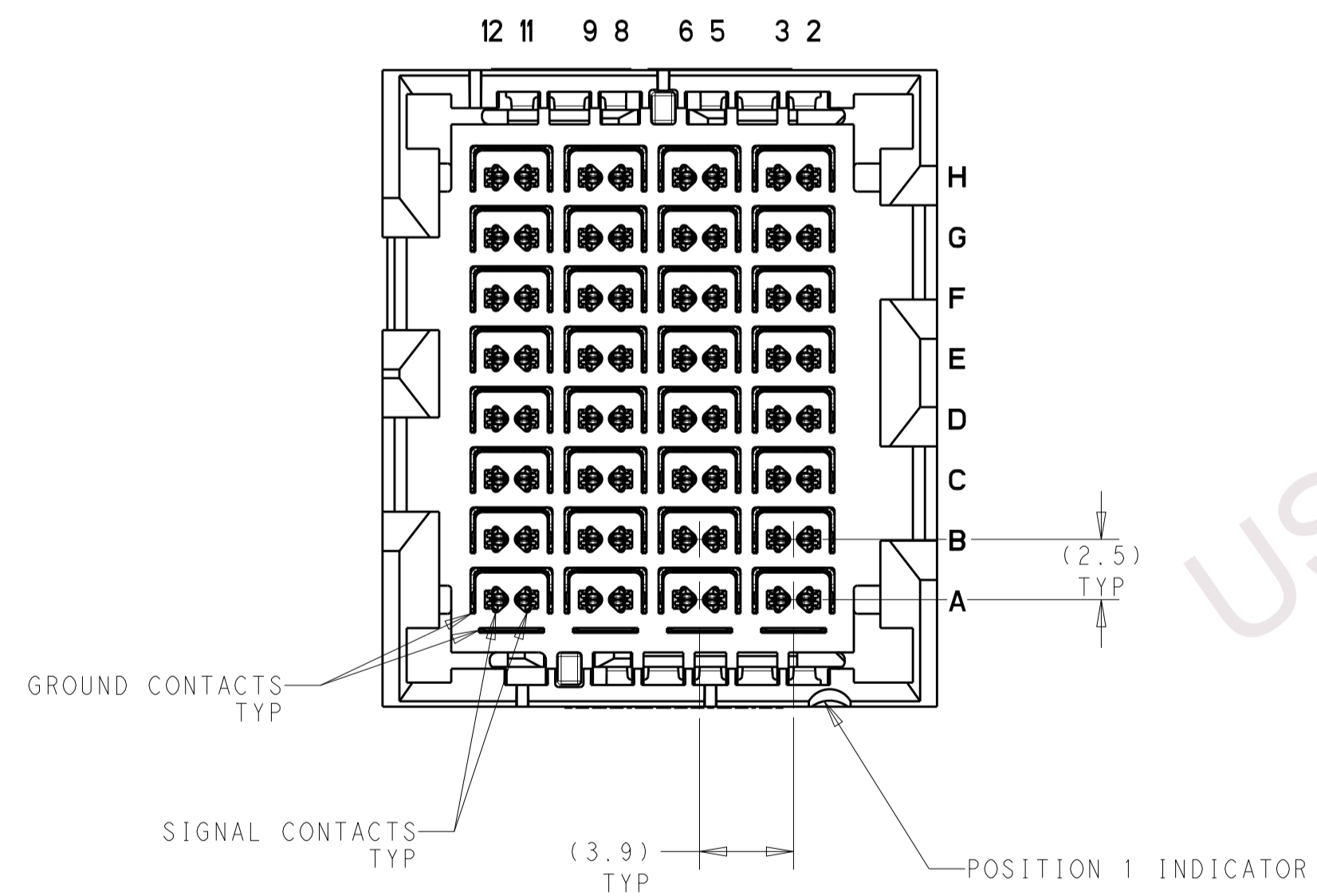


REVISIONS				
P.	LTN	DESCRIPTION	DATE	OWN APVD
1		PROPOSED	07JAN2016	WL FY



SCALE 2:1

- 1 CONTACTS AND SHIELDS - COPPER ALLOY
CLIP - STAINLESS STEEL
HOUSINGS, GROUND SHELLS, AND ORGANIZER - THERMOPLASTIC, UL 94V-0, BLACK
- 2 CONFORMS TO THE REQUIREMENTS OF TE PRODUCT SPECIFICATION 108-32112 BASED ON TELCORDIA GR-1217-CORE FOR SYSTEM QUALITY LEVEL III, APPLICATIONS IN CONTROLLED ENVIRONMENTS (CENTRAL OFFICE). COMPLIANT PIN AREA: 0.5µm MIN MATTE TIN.
- 3 GROUND PLATED THRU HOLE REQUIREMENTS:
FINISHED HOLE = $\varnothing 0.37 \pm 0.05$
HOLE SIZE PRIOR TO PLATING = $\varnothing 0.450 \pm 0.025$
COPPER THICKNESS = 0.025 MIN
IMMERSION TIN IF APPLICABLE = (0.00095)
- 4 SIGNAL PLATED THRU HOLE REQUIREMENTS:
FINISHED HOLE = $\varnothing 0.29 \pm 0.05$
HOLE SIZE PRIOR TO PLATING = $\varnothing 0.368 \pm 0.025$ (#79 DRILL)
COPPER THICKNESS = 0.025 MIN
IMMERSION TIN IF APPLICABLE = (0.00095)
- 5 SI VIA PLATED THRU HOLE REQUIREMENTS:
FINISHED HOLE = ($\varnothing 0.22$)
HOLE SIZE PRIOR TO PLATING = $\varnothing 0.300 \pm 0.025$
COPPER THICKNESS = 0.025 MIN
IMMERSION TIN IF APPLICABLE = (0.00095)
- 6 SI VIAS & SIGNAL HOLES:
PTH DIMENSIONS APPLY TO THE TOP 1.00mm OF THE PCB THICKNESS FROM THE CONNECTOR MOUNTING SIDE.
GROUND HOLES:
PTH DIMENSIONS APPLY TO THE TOP 1.25mm OF THE PCB THICKNESS FROM THE CONNECTOR MOUNTING SIDE.
- 7 CONNECTOR MARKED WITH PART NUMBER, DATE CODE, AND "85 OHM" IN APPROXIMATE AREA SHOWN.
- 8 DATUMS AND BASIC DIMENSIONS ESTABLISHED BY CUSTOMER
- 9 APPLIES TO FINISHED HOLE DIAMETER.
- 10 CONNECTOR MARKED WITHSEMBLY PART NUMBER, DATE CODE, AND "85 OHM" IN APPROXIMATE AREA SHOWN.



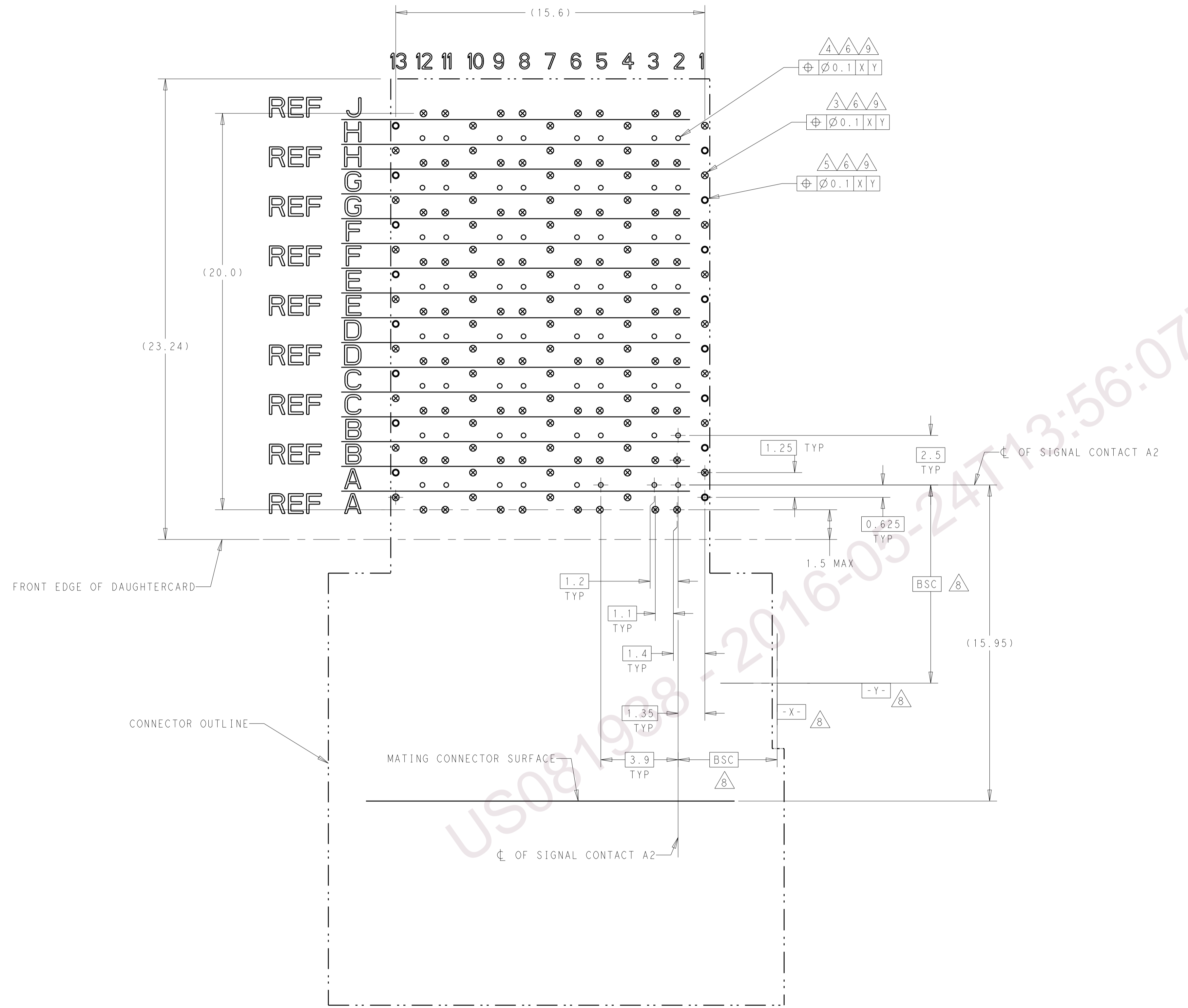
2298081-1
PART NUMBER

PRELIMINARY
NOT RELEASED FOR PRODUCTION

THIS PRODUCT HAS NOT
COMPLETED VALIDATION AND
QUALIFICATION TESTING

THIS DRAWING IS A CONTROLLED DOCUMENT.		OWN: WJL/LLU 07JAN2016		PRELIMINARY
DIMENSIONS: mm		CHK: N SWANGER 07JAN2016		
TOLERANCES UNLESS OTHERWISE SPECIFIED:		APVD: FRANK YANG 07JAN2016	NAME: RIGHT ANGLE ADAPTER ASSEMBLY, FLIPPED, 8 PAIR 4 COLUMN, 85 OHM DPO, STRADA WHISPER	
0 PLC	±	PRODUCT SPEC	APPLICATION SPEC	
1 PLC	±	114-32120	SIZE: A1	CAGE CODE: C=2298081
2 PLC	±	WEIGHT	CUSTOMER DRAWING	
3 PLC	±	SCALE: 4:1	SHEET 1 OF 2	
4 PLC	±	REV: 1		
ANGLES	±			
FINISH	±			

REVISIONS				
P.	LTN.	DESCRIPTION	DATE	APVD.
-	-	SEE SHEET 1	-	-



RECOMMENDED PCB LAYOUT
 SINGLE CONNECTOR (NON-STACKING)
 COMPONENT SIDE SHOWN
 SCALE 8:1

- = SIGNAL
- ⊗ = GROUND
- ⊙ = SIGNAL INTEGRITY VIA TO GROUND

**PRELIMINARY
 NOT RELEASED FOR PRODUCTION**

**THIS PRODUCT HAS NOT
 COMPLETED VALIDATION AND
 QUALIFICATION TESTING**

THIS DRAWING IS A CONTROLLED DOCUMENT.		DWN: WILL LIU 07JAN2016	
DIMENSIONS: mm		CHK: N. SWANGER 07JAN2016	
TOLERANCES UNLESS OTHERWISE SPECIFIED:		APVD: FRANK YANG 07JAN2016	NAME: RIGHT ANGLE ADAPTER ASSEMBLY, FLIPPED, 8 PAIR 4 COLUMN, 85 OHM DPO, STRADA WHISPER
0 PLC	±	PRODUCT SPEC	SIZE: A1
1 PLC	±	APPLICATION SPEC	CAGE CODE: C=2298081
2 PLC	±	WEIGHT	RESTRICTED TO
3 PLC	±	CUSTOMER DRAWING	SCALE: 4:1 SHEET 2 OF 2 REV 1
4 PLC	±		
ANGLES	±		