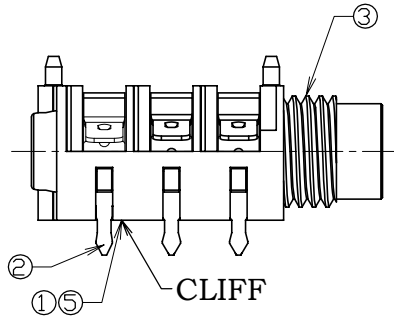
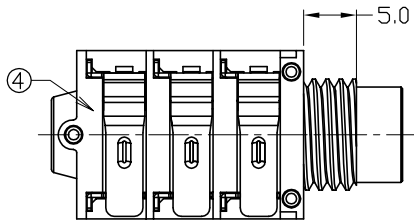
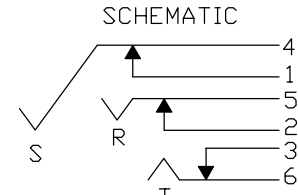
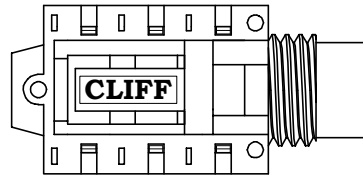
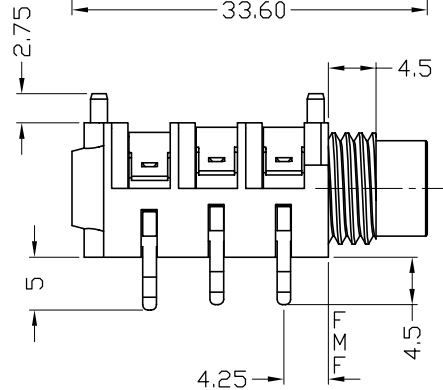
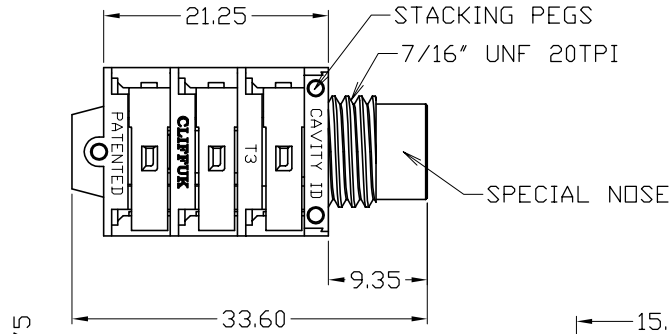


ISS.	AMEND	DATE
1	1st DRAWN	17/01/04
2	4th TOOL INFO ADD	21/02/13

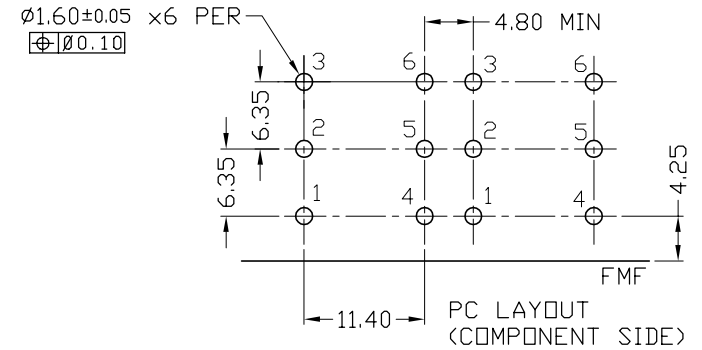
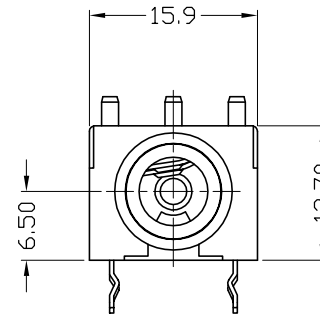


NEW TOOL 4

- 1) ADDITIONAL JACK PLUG SUPPORT
- 2) TYPE 2 CONTACTS
- 3) SPECIAL NOSE THREAD LENGTH 5.0mm
- 4) PATENT NUMBER WILL BE ON PACKAGING
- 5) CAVITY ID NEXT TO CLIFF LOGO

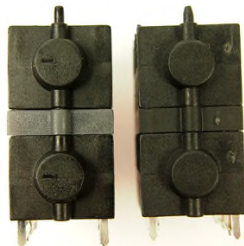


INSERTED PLUG MAKES WITH 4, 5, 6 AND BREAKS 1, 2, 3. SWITCHES MAKE ON PLUG REMOVAL.



NOTE:
 DUPLICATE TOOLING MAY BE USED FOR THIS JACK SOCKET.
 TOOL 3 AS SHOWN, T3 ID ON MOULDINGS
 TOOL 4 (NEW) - SEE IMAGES AND NOTES.
 NO NUTS OR WASHERS NOT SUPPLIED WITH THIS MODEL.

IMAGES ARE OF FCR1126L - TOP JACK + SPACER NOT USED ON FCR11155.



RoHS
 COMPLIANT

TOLERANCE
 NO DEC. PLACE ± 1.00
 1 DEC. PLACE ± 0.50
 2 DEC. PLACE ± 0.10
 HOLE Ø ± 0.10
 ANGLES ± 1/2°
 UNLESS OTHERWISE STATED

Cliff Electronic Components Ltd.

76 Holmetherpe Avenue, Holmetherpe Industrial Estate,
 Redhill, Surrey, RH1 2PF, England, UK
 Tel: 01737-771375 Fax: 01737-766012 Website: www.cliffuk.co.uk

THE CONTENTS OF THIS DOCUMENT MUST NOT BE COPIED OR DISCLOSED TO A 3rd PARTY WITHOUT WRITTEN PERMISSION OF CLIFF UK. © 2004

DIMENSIONS IN MILLIMETERS UNLESS OTHERWISE STATED. WORK TO DIMENSIONS. REMOVE ALL BURRS. IF IN DOUBT ASK.

3rd ANGLE PROJECTION:

DO NOT SCALE

MATERIAL: COMPOSITE

FINISH: CLEAN

DRAWN: D.P.J.

APPROVED: R.W.T.

TITLE: 1/4" JACK SOCKET S1C/BBB/SPN/NN

DRWG. No. **FCR11155**

FORM: A4DRWGH