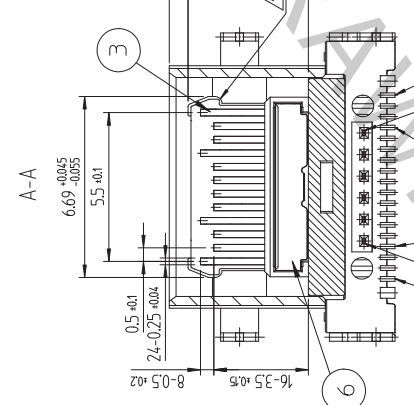
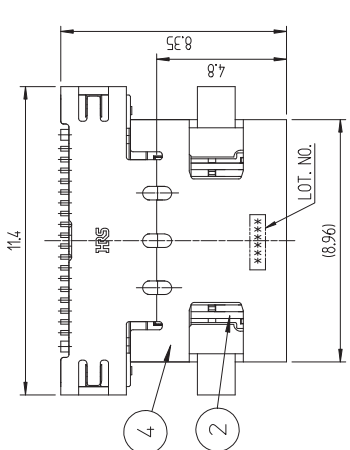
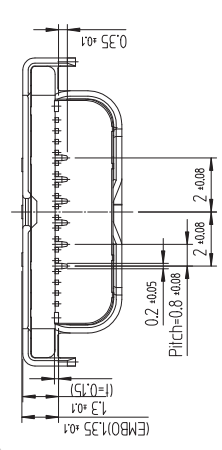
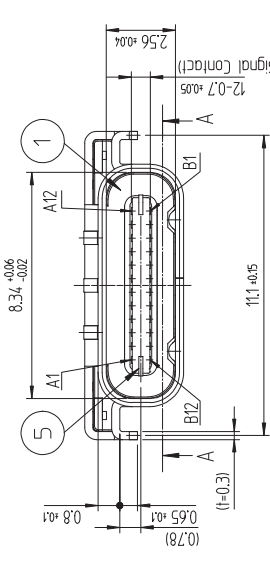
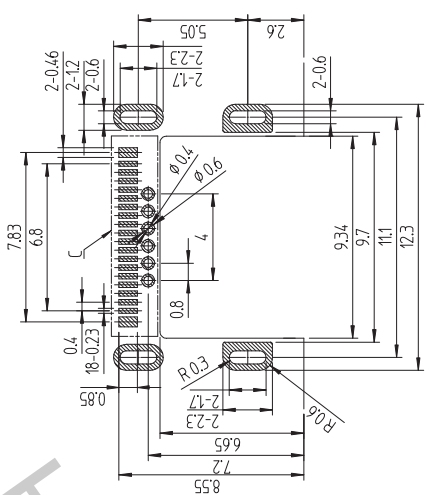


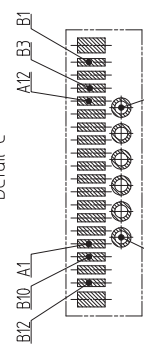
1	2	3	4	5	6	7	8
Jun.1.2016 Copyright 2016 HIROSE ELECTRIC CO., LTD. All Rights Reserved. 2016年6月1日 著作権 2016 株式会社 廣瀬電気工業 全著作権所有		訂正事項 DESCRIPTION OF REVISIONS COUNT	訂正年月日 DATE	檢査事項 DESCRIPTION OF REVISIONS COUNT	檢査年月日 DATE		
A 1 [RE-2-0831]		LCE LH 15.12.10					



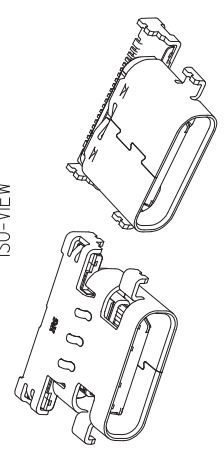
RECOMMENDED PCB LAY OUT
(General Tolerance : ±0.05)



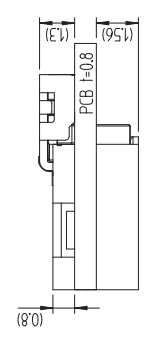
Detail C



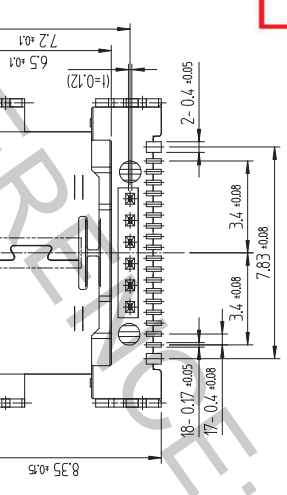
ISO-VIEW



PCB MOUNTING POSITION (FREE)



NOTE 1. LEAD CO-PLANARITY SHALL BE 0.08MAX.
2. PER REEL : 1500 CONNECTORS.
3. GENERAL TOLERANCE : ±0.15



4	STAINLESS STEEL	Ni-5	8	PS	COVER TAPE
3	COPPER ALLOY	Contact : Ni-5+Pd-Ni0.75Min+Au0.05Min Lead : Ni-5+Au0.05Min	7	PS	EMBOSS CARRIER TAPE
2	COPPER ALLOY	Contact : Ni-5+Pd-Ni0.75Min+Au0.05Min Lead : Ni-5+Au0.05Min	6	STAINLESS STEEL	Ni-5
1	LCP	UL94V-0,COLOR BLACK	5	STAINLESS STEEL	Other Ni-5 / LEAD Ni-5+Au 0.05Min
NO.	MATERIAL	FINISHREMARKS	NO.	MATERIAL	FINISHREMARKS
REMARK	DRAWN	DESIGNED	CHECKED	APPROVED	RELEASED
	CEJIM 15.09.04	CEJIM 15.09.04	H.J.LEE 15.09.04	T.S.KANG 15.09.04	ENG 15.12.11 DEPT

DRAWING NO. EDC3-611479		PART NO. CX70M-24P1	
SCALE 1:1	CODE NO. CL 6240-0002-1		
UNITS mm			

DRAWING FOR REFERENCE
This is subject to change without notice

1	2	3	4	5	6	7	8
訂正事項 DISCUSSION OF REVISIONS B Y (CHKD) DATE		訂正事項 DISCUSSION OF REVISIONS B Y (CHKD) DATE		訂正事項 DISCUSSION OF REVISIONS B Y (CHKD) DATE		訂正事項 DISCUSSION OF REVISIONS B Y (CHKD) DATE	
△ 數	△ 數	△ 數	△ 數	△ 數	△ 數	△ 數	△ 數
△	△	△	△	△	△	△	△

年 月 日	年 月 日	年 月 日	年 月 日	年 月 日	年 月 日
.
.

Jun. 1. 2016 Copyright 2016 HIROSE ELECTRIC CO., LTD. All Rights Reserved.



NO.	FINISH/REMARKS	NO.	MATERIAL	DESIGNED	CHECKED	APPROVED	RELEASED
4	STAINLESS STEEL	8	PS	CELJIM 15.09.04	HJJLEE 15.09.04	T.S.KANG 15.09.04	ENG 15.12.11 DEPT
3	COPPER ALLOY	7	PS	CELJIM 15.09.04			
2	COPPER ALLOY	6	STAINLESS STEEL				
1	LCP	5	STAINLESS STEEL				
REMARK		FINISH/REMARKS		FINISH/REMARKS		FINISH/REMARKS	
		UL94V-0.COLOR BLACK		Other Ni-5 / LEAD Ni-5-Au 0.03μm			

A1	A2	A3	A4	A5	A6	A7	A8	A9	A10	A11	A12
GND	TX1+	TX1-	Vbus	CC1	D+	D-	SBU1	Vbus	RX2-	RX2+	GND
GND	RX1+	RX1-	Vbus	SBU2	D-	D+	CC2	Vbus	TX2-	TX2+	GND
B12	B11	B10	B9	B8	B7	B6	B5	B4	B3	B2	B1



4	STAINLESS STEEL	8	PS	COVER TAPE			
3	COPPER ALLOY	7	PS	EMBOSS CARRIER TAPE			
2	COPPER ALLOY	6	STAINLESS STEEL	Ni-5			
1	LCP	5	STAINLESS STEEL	Other Ni-5 / LEAD Ni-5-Au 0.03μm			
REMARK		FINISH/REMARKS		FINISH/REMARKS		FINISH/REMARKS	
		UL94V-0.COLOR BLACK		Other Ni-5 / LEAD Ni-5-Au 0.03μm			

DRAWING NO. EDC3-611479		PART NO. CX70M-24P1	
SCALE 5:1	UNITS mm	CODE NO. CL 6240-0002-1	2/2

DRAWING FOR REFERENCE
This is subject to change without notice

