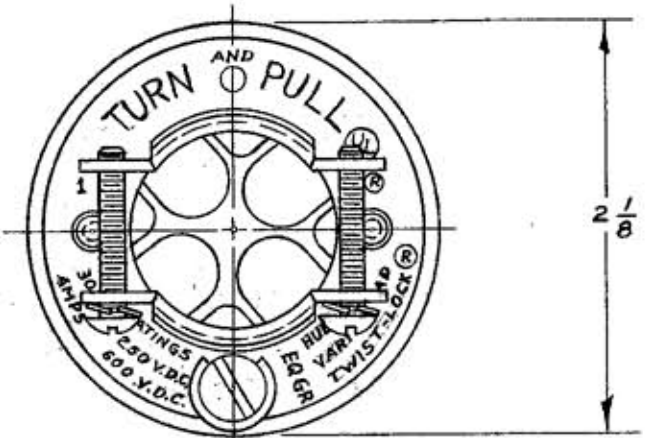
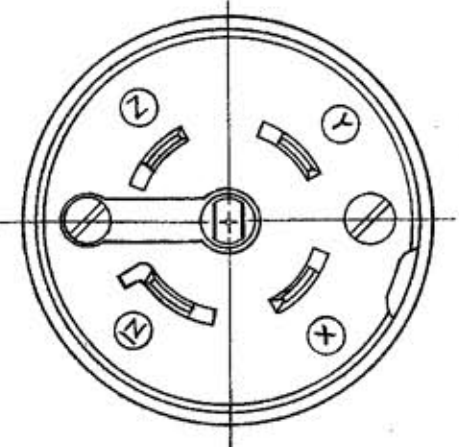
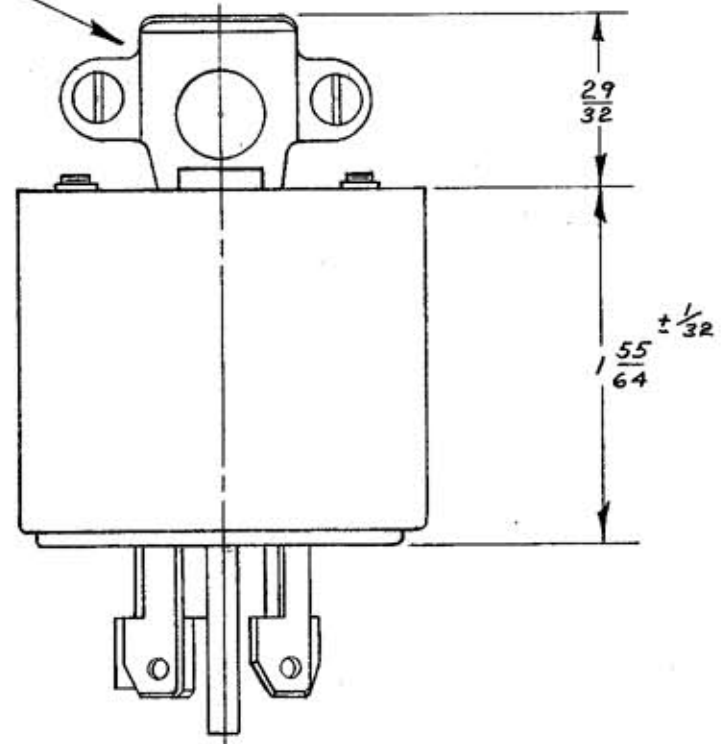


M-3813



CORD CLAMPS TAKE CORDS FROM .562 TO 1.000 DIA.



LIST OF PARTS

DESCRIPTION	MATERIAL	FINISH
COVER	NYLON	BLACK
RETAINING SHELL	NYLON	BLACK
TOP PLATE	.040 STEEL	ZINC PL.
CUPPED WASHER	.031 BRASS	
BINDING SCREWS	BRASS	
BLADE HOLDER	FIBERITE	BLACK
4 - BLADES	.070 BRASS	
4 - TERMINALS	.031 BRASS	
WIRE CLAMP	.062 STEEL	ZINC PL.
CENTER GR. PIN	BRASS	
SHUNT	.031 BRONZE	
CORD CLAMP	.062 STEEL	ZINC PL.
HOLDING SCREWS	BRASS	

CENTER CONFIGURATIONS		
CONFIGURATION		CAT. NO.
1		45115
2		45215
3		45315
4		45415
5		45515
6		45615
7		45715
8		45815

DIMENSION SHEET FOR CAT. NO. 45115, 45215, 45315, 45415, 45515, 45615, 45715, 45815
 REPAIRABLE NON-REPAIRABLE

B
M-3813

SYM	REVISIONS	APP	DATE

SUPERSEDES DRAWING M-3813 DATED 10-23-61

TITLE
 30-A 250-V.A.C. OR D.C. 30-A 600 V.A.C. MAX.
 WIRE TWIST-LOCK VARI-LOAD CAP

TOLERANCES UNLESS OTHERWISE SPECIFIED
 FRACTIONS ± 1/64
 DECIMALS ± .005
 ANGLES ± 2°

HARVEY HUBBELL, INC.
 BRIDGEPORT, CONN.
 DR. BY G.M. APP. BY [Signature]
 TR. BY [Signature] SCALE FULL
 CHK'D. BY [Signature] DATE 12-12-68