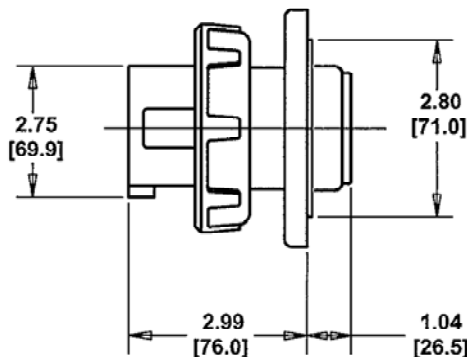
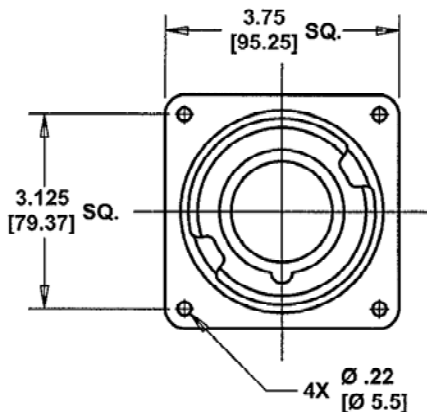







# M-6090 6



CAT. NO.	CONFIGURATION	RATING	COMMENTS	HOUSING		CAT. NO.	CONFIGURATION	RATING	COMMENTS	HOUSING	
				MATERIAL	COLOR					MATERIAL	COLOR
						HBL530B7W		30A 3ØY 277/480 VAC		NYLON	RED
						HBL530B9W		30A 3ØY 120/208 VAC		NYLON	BLUE
HBL530B5W		30A 3ØY 347/600 VAC		NYLON	BLACK						
HBL532B6W		32A 220/380VAC 240/415 VAC		NYLON	RED						
HBL530B6V02		30A 220/380VAC 240/415 VAC		VALOX	RED						

NOTES (UNLESS OTHERWISE SPECIFIED)

1) TOLERANCES ARE:  
DECIMALS  $\pm .03$   
ANGLES  $\pm 2^\circ$

2) DIMENSIONS ARE: INCHES  
[MILLIMETERS]

## LIST OF PARTS

DESCRIPTION	MATERIAL	FINISH
HOUSING	SEE TABLE	
GASKET	NEOPRENE	
LOCK RING	POLYESTER	
INTERIOR	THERMOSET	
PINS	BRASS	
TERMINAL SCREWS	ST. STEEL	
FLANGE	NYLON	
ASSEMBLY SCREWS	ST. STEEL	

6	ADDED CAT. # HBL530B6V02 AND SPEC TO TABLE. CAT. # HBL532B6W RATING 32A WAS 16A. CAT. # HBL530B5W RATING 30A WAS 20A. CAT. # HBL530B7W RATING 30A WAS 20A. CAT. # HBL530B9W RATING 30A WAS 20A. PER DCN 18699 DDL	CAC	01/24/12
---	---	-----	----------

5	REDRAWN ON CAD WITH CHANGES. ADDED NOTES 1 & 2, "HOUSING" AND "COMMENTS" COLUMNS TO TABLE. IN TABLE: ADDED "240/415VAC TO HBL532B6W. "A" WAS "AMP", AND REMOVED CAT. NO. HBL530B2W. "Ø" WAS "DIA." AND "[XX.X]" WAS "MM". IN LIST OF PARTS, "SEE TABLE" WAS "NYLON" AND "NEOPRENE" WAS "RUBBER". .22 DIM. WAS 7/32. SUPERSEDES DWG. DATED 5/5/80 PER DCN #12944. JMN	DJP	6/28/06
---	--	-----	---------

SYM	REVISIONS	APP	DATE
-----	-----------	-----	------

THE DESIGN AND DIMENSIONS OF THE PRODUCT SHOWN ON THIS DRAWING ARE SUBJECT TO CHANGE WITHOUT NOTICE

TITLE  
30A & 32A 4 POLE 5 WIRE  
PIN AND SLEEVE INLETS

TOLERANCES UNLESS OTHERWISE SPECIFIED	WIRING DEVICE—KELLEMS HUBBELL INCORPORATED BRIDGEPORT, CT			
FRACTIONS $\pm 1/64$	DR. BY	W.T.C.	APP. BY	DJP
DECIMALS $\pm .005$	TR. BY	JMN	SCALE	NONE
ANGLES $\pm 2^\circ$	CHK'D BY	DJP	DATE	6/28/06