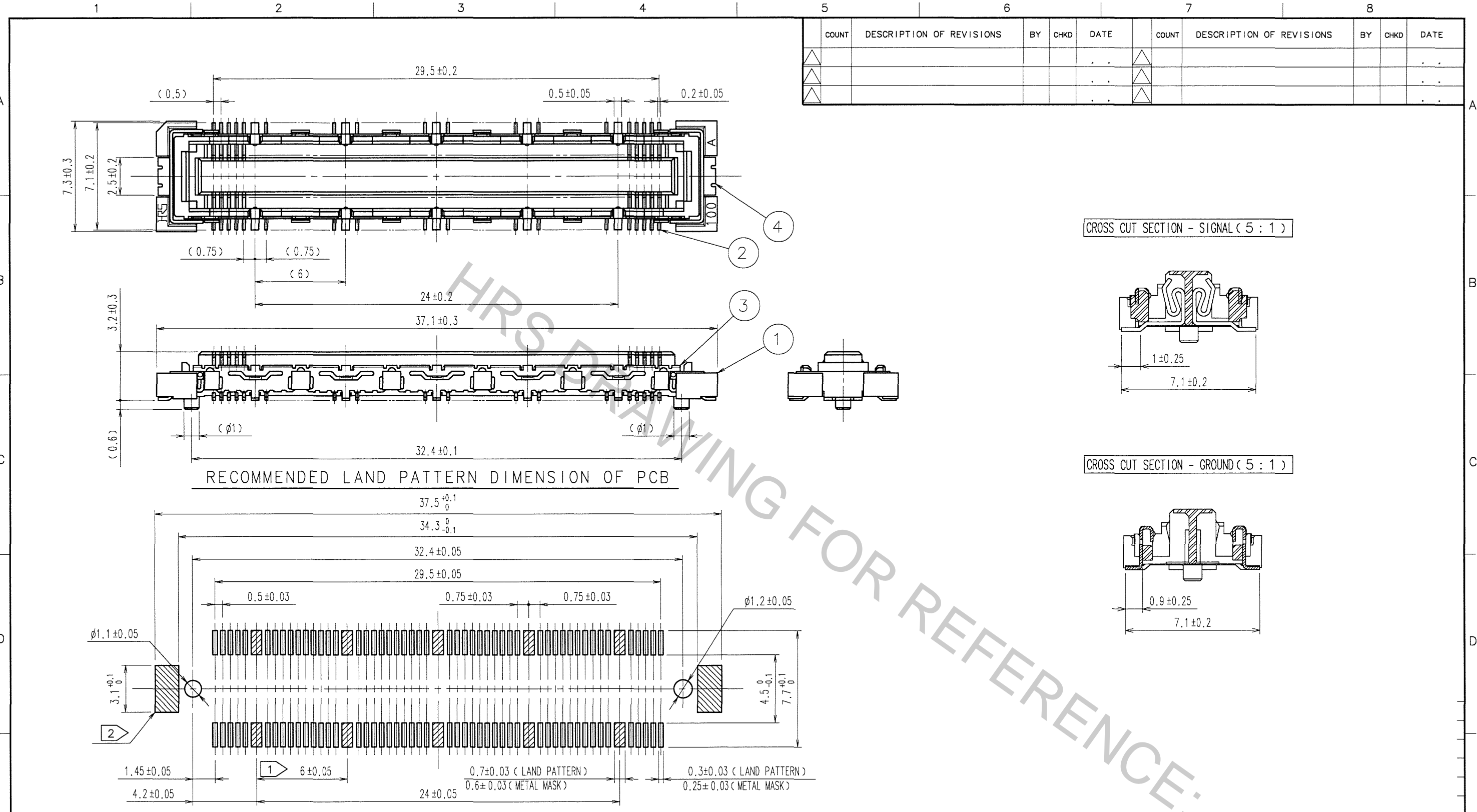


Aug.1.2016 Copyright 2016 HIROSE ELECTRIC CO., LTD. All Rights Reserved.



RECOMMENDED LAND PATTERN DIMENSION OF PCB

- NOTES
- 1 10 HATCHED PARTS:GROUND CIRCUIT.
 - 2 2 HATCHED PARTS:GROUND CIRCUIT.
 - 3 SMT LEAD-COPLANARITY:0.1 MAX.
 - 4 THIS PRODUCT HAS NO POLARITY TO PATTERN FOR MOUNTING.
 - 5 THE DIMENSIONS IN PARENTHESES ARE FOR REFERENCE.

COUNT	DESCRIPTION OF REVISIONS	BY	CHKD	DATE	COUNT	DESCRIPTION OF REVISIONS	BY	CHKD	DATE
△					△				
△					△				
△					△				

3, 4	PHOSPHOR BRONZE	TIN-PLATING
2	PHOSPHOR BRONZE	CONTACT AREA:GOLD 0.1μmmin. LEAD AREA : GOLD FLASH UNDER PLATING : NICKEL 1μmmin.

NO.	MATERIAL	FINISH, REMARKS	NO.	MATERIAL	FINISH, REMARKS
1	LCP	BEIGE UL94V-0			

CODE NO. (OLD)	DRAWN	DESIGNED	CHECKED	APPROVED	RELEASED
CL	A.SUZUKAWA	<i>K. Nakamura</i>	<i>K. Ogasawara</i>	<i>H. Okawa</i>	
	'06.09.21	06.09.21	06.09.21	06.09.21	

SCALE	DRAWING NO.	PART NO.
4 : 1	EDC3-151977-25	FX10A-100S/10-SV(71)
UNITS mm	HRS HIROSE ELECTRIC CO., LTD	CODE NO. CL570-0202-7-71

TO