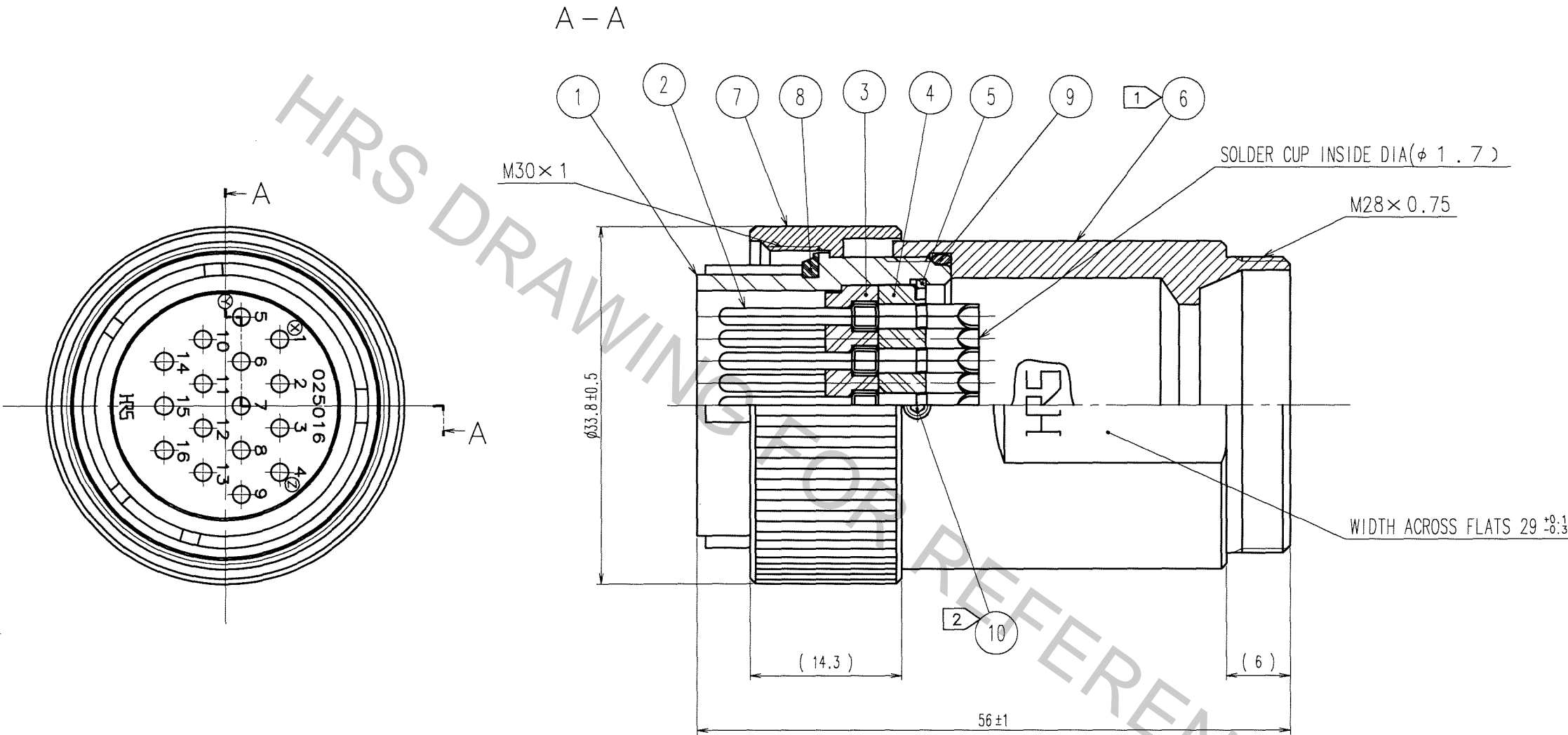


Aug.1.2016 Copyright 2016 HIROSE ELECTRIC CO., LTD. All Rights Reserved.

COUNT	DESCRIPTION OF REVISIONS	BY	CHKD	DATE	COUNT	DESCRIPTION OF REVISIONS	BY	CHKD	DATE
△				..	△				..
△				..	△				..
△				..	△				..



- NOTES
- 1 THE RECOMMENDED CLAMP TORQUE OF REF. NO. ⑥ TO BE 2 TO 2.5 N · m.
  - 2 THE RECOMMENDED CLAMP TORQUE OF REF. NO. ⑩ TO BE 0.2 TO 0.25 N · m.
  - 3 ROTATION EXAMPLES OF REF. NOS. ① AND ⑥ ARE SHOWN.
  - 4 SCREW OF REF.NO. ①, ⑥, ⑧ ,LOCTITE 271,OR EQUIVALENT ,LOCTITE JAPAN IS RECOMMENDED TO PREVENT FROM LOOSENING.
  - 5 THIS PRODUCT TO BE USED WITH CABLECLAMP, JR25WCC-※ (71).
- ※ DESIGNATE DIAMETER OF APPLICABLE CABLE.

5	PHOSPHOR BRONZE	NICKEL PLATING	10	STAINLESS STEEL	
4	PHENOL-FORMALDEHYDE	(BLACK) UL94V-0	9	NBR	(GRAY)
3	PHENOL-FORMALDEHYDE	(BLACK) UL94V-0	8	NBR	(GRAY)
2	COPPER ALLOY	SILVER PLATING 3μ m min.	7	BRASS	BLACK CHROME PLATING
1	ALUMINUM ALLOY	BLACK CHROME PLATING	6	BRASS	BLACK CHROME PLATING
NO.	MATERIAL	FINISH, REMARKS	NO.	MATERIAL	FINISH, REMARKS

CODE NO. (OLD)		DRAWN	DESIGNED	CHECKED	APPROVED	RELEASED
		<i>D. Matsune</i>	<i>D. Matsune</i>	<i>E. Kunii</i>	<i>M. Sato</i>	..
		06.05.26	06.05.26	06.05.26	06.05.26	..
DRAWING NO. EDC3-110567-71		PART NO. JR25WP-16P(71)				
SCALE 2 : 1		CODE NO. CL114-2010-6-71				
UNITS mm		1/1				

**HRS** HIROSE ELECTRIC CO., LTD