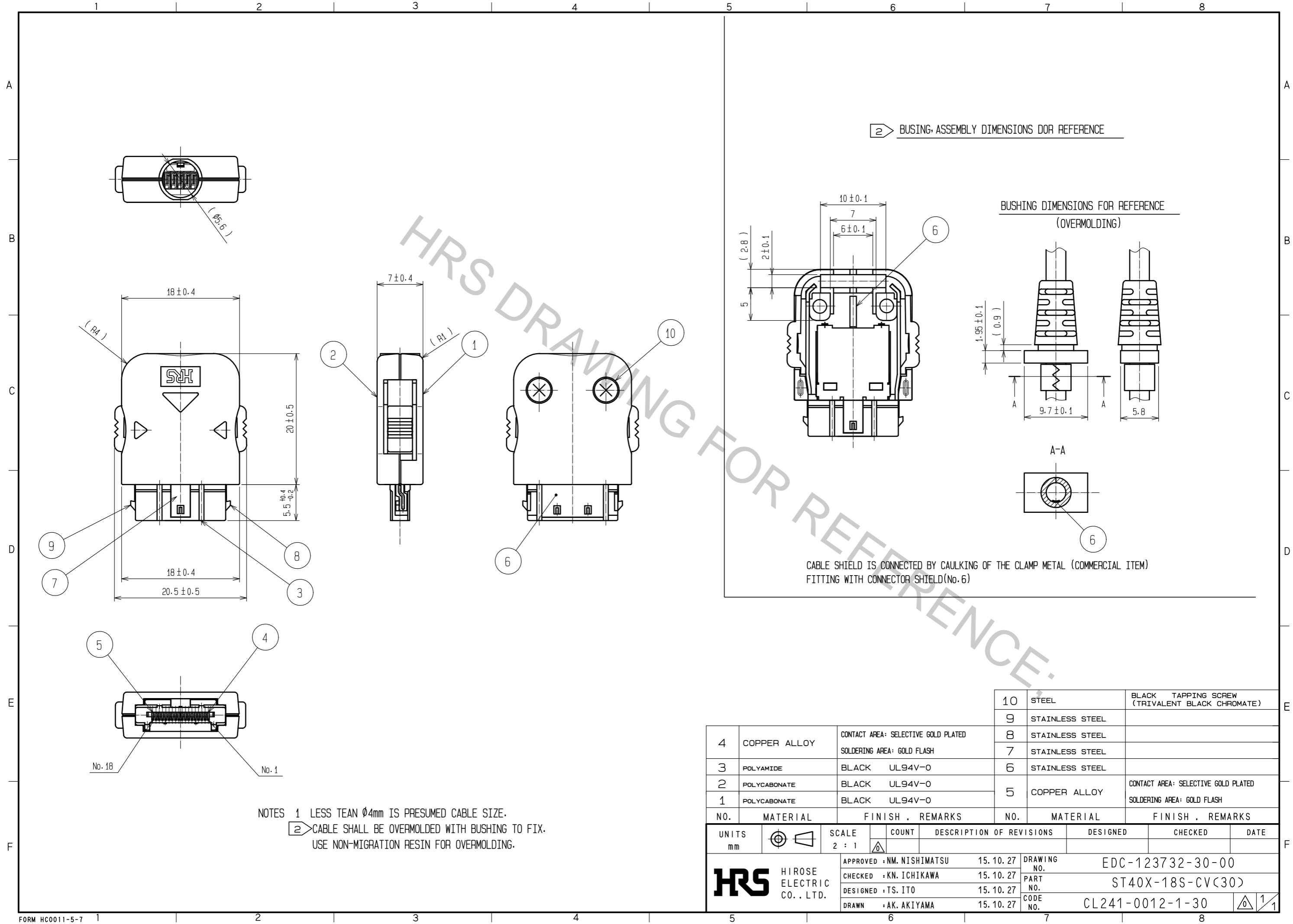


Aug.1.2016 Copyright 2016 HIROSE ELECTRIC CO., LTD. All Rights Reserved.



② BUSHING, ASSEMBLY DIMENSIONS DOR REFERENCE

BUSHING DIMENSIONS FOR REFERENCE
(OVERMOLDING)

CABLE SHIELD IS CONNECTED BY CAULKING OF THE CLAMP METAL (COMMERCIAL ITEM)
FITTING WITH CONNECTOR SHIELD(No.6)

NOTES 1 LESS TEAN $\phi 4\text{mm}$ IS PRESUMED CABLE SIZE.
② CABLE SHALL BE OVERMOLDED WITH BUSHING TO FIX.
USE NON-MIGRATION RESIN FOR OVERMOLDING.

NO.	MATERIAL	FINISH .	REMARKS	NO.	MATERIAL	FINISH .	REMARKS
10	STEEL		BLACK TAPPING SCREW (TRIVALENT BLACK CHROMATE)	4	COPPER ALLOY		CONTACT AREA: SELECTIVE GOLD PLATED SOLDERING AREA: GOLD FLASH
9	STAINLESS STEEL			3	POLYAMIDE		BLACK UL94V-0
8	STAINLESS STEEL			2	POLYCARBONATE		BLACK UL94V-0
7	STAINLESS STEEL			1	POLYCARBONATE		BLACK UL94V-0
6	STAINLESS STEEL			5	COPPER ALLOY		CONTACT AREA: SELECTIVE GOLD PLATED SOLDERING AREA: GOLD FLASH

UNITS	SCALE	COUNT	DESCRIPTION OF REVISIONS	DESIGNED	CHECKED	DATE
mm	2 : 1	△				
			APPROVED : NM. NISHIMATSU 15.10.27 CHECKED : KN. ICHIKAWA 15.10.27 DESIGNED : TS. ITO 15.10.27 DRAWN : AK. AKIYAMA 15.10.27	DRAWING NO. EDC-123732-30-00 PART NO. ST40X-18S-CV(30) CODE NO. CL241-0012-1-30		