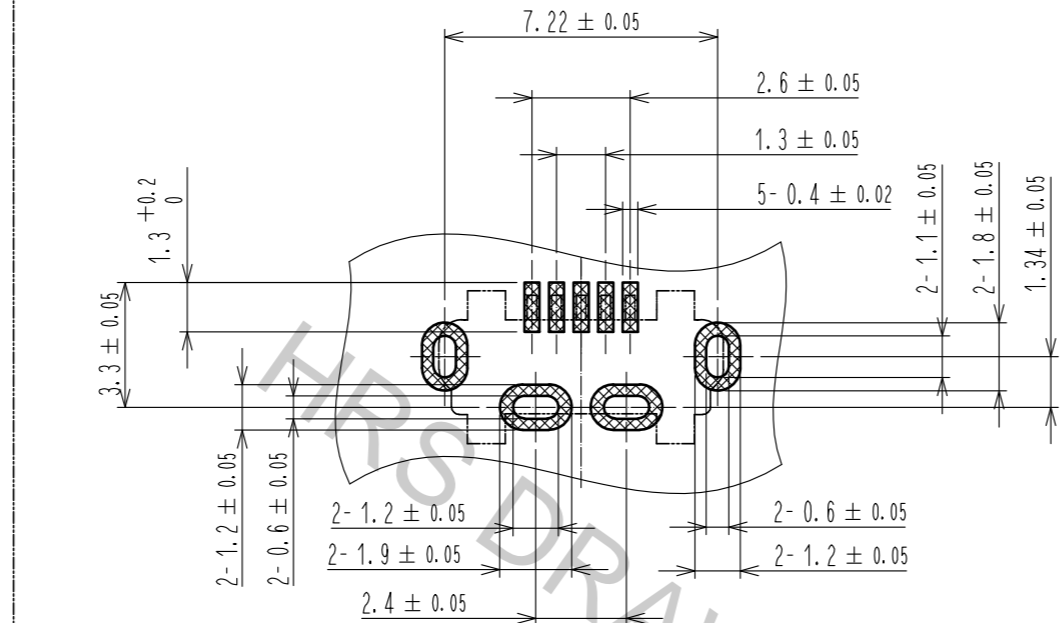
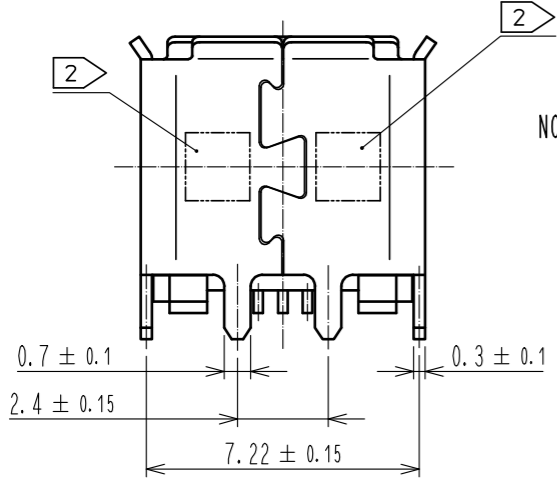
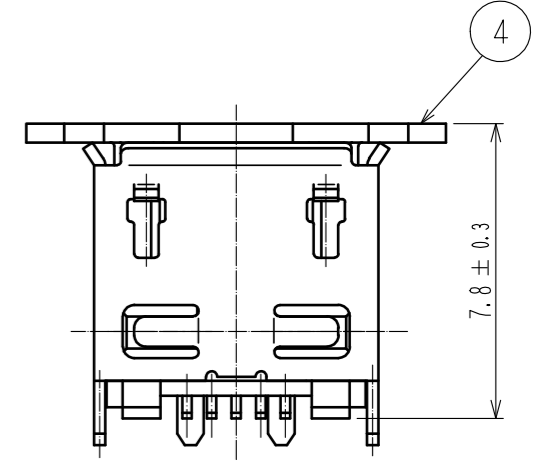
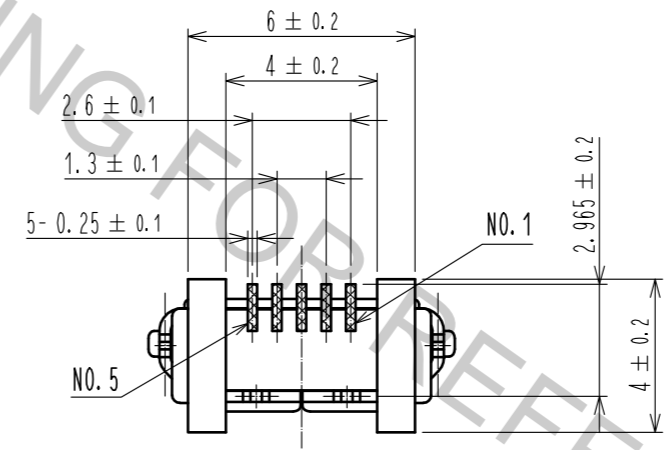
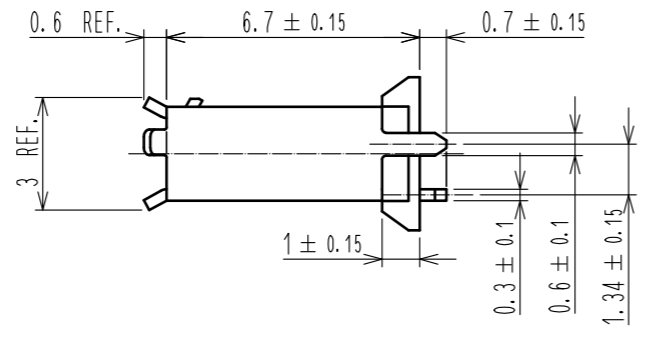
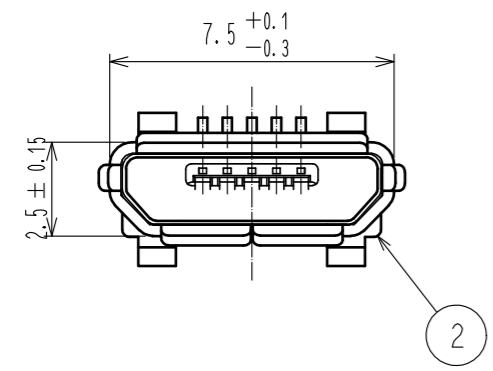
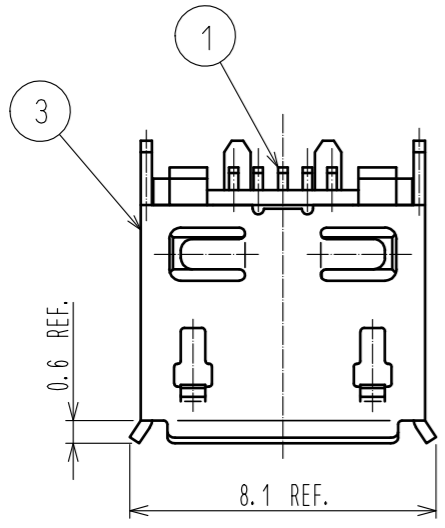
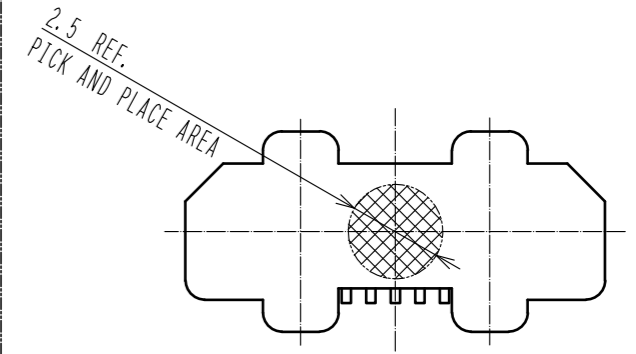


PCB LAYOUT



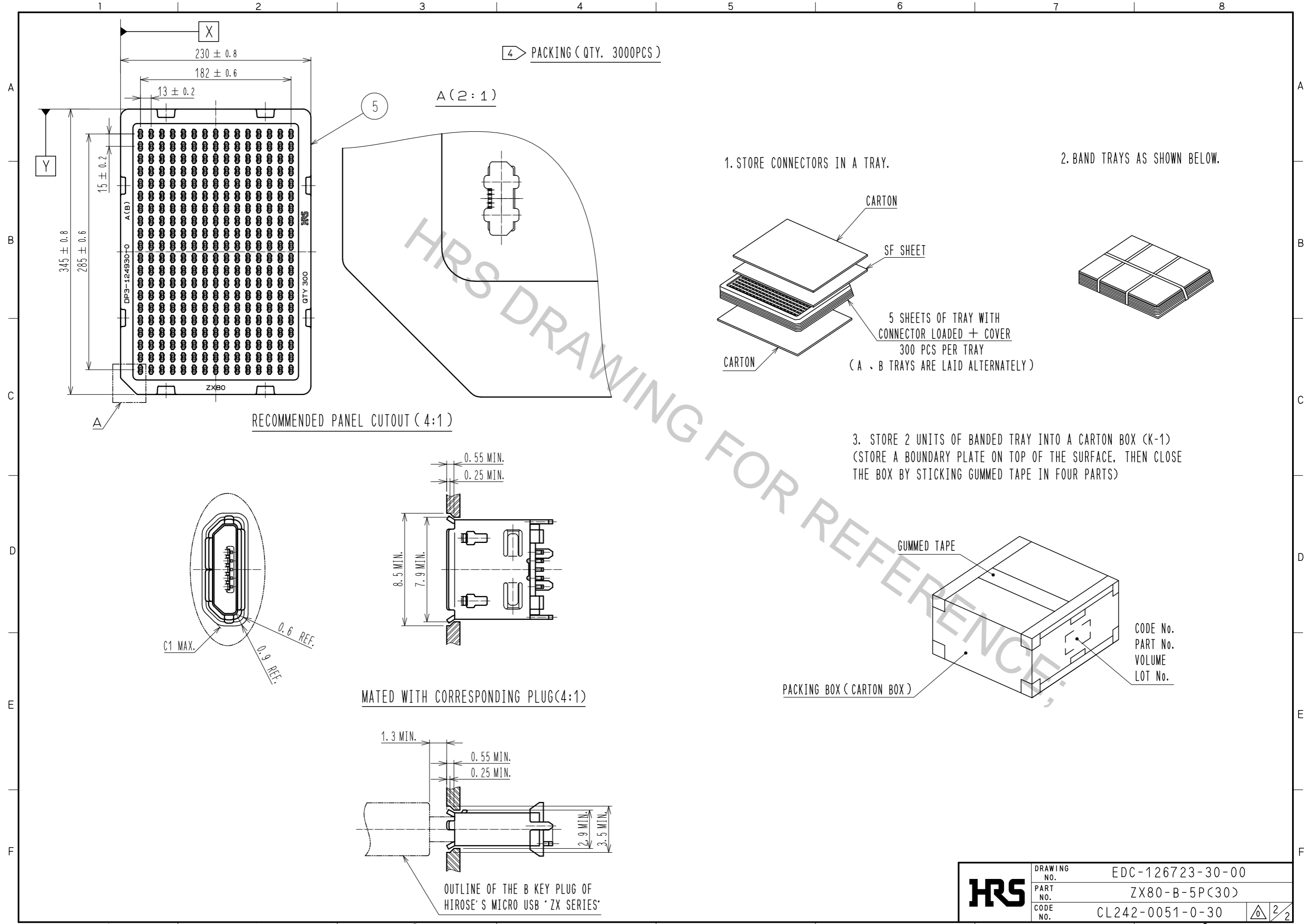
PICK AND PLACE CAP



- NOTE
- 1 CO-PLANARITY IS WITHIN 0.08.
 - 2 LOT No. SHALL BE INDICATED AT THE POSITION AS SHOWN.
 - 3 PLATING
CONTACT AREA : GOLD PLATE 0.75 μm MIN.
LEAD AREA : GOLD PLATE 0.05 μm MIN.
UNDER PLATING : NICKEL 2 μm MIN.
 - 4 PACKING
300 PCS PER TRAY.
 - 5 AS FOR PART No. 3, THE PERFORMANCE REMAINS GOOD EVEN IF THERE IS A RUBBING WOUND BY THE ASSEMBLY PROCESS. AND THE PERFORMANCE REMAINS GOOD EVEN IF THERE IS A DIFFERENCE OF THE COLOR OF PLATING WITH THE MANUFACTURING LOT.

5	PS							
4	POLYAMIDE RESIN							
3	STAINLESS STEEL				UNDER PLATING: NICKEL 0.2 μm MIN. OVER PLATING : TIN 1μm MIN. LUBRICANT			
2	LCP	BLACK	UL94V-0					
1	COPPER ALLOY	3						
NO.	MATERIAL	FINISH	REMARKS	NO.	MATERIAL	FINISH	REMARKS	
UNITS	mm	SCALE	5 : 1	COUNT	DESCRIPTION OF REVISIONS	DESIGNED	CHECKED	DATE
HRS HIROSE ELECTRIC CO., LTD.		APPROVED	NM. NISHIMATSU	15.10.27	DRAWING NO.	EDC-126723-30-00		
		CHECKED	KN. ICHIKAWA	15.10.27	PART NO.	ZX80-B-5P(30)		
		DESIGNED	TS. ITO	15.10.27	CODE NO.	CL242-0051-0-30		
		DRAWN	AK. AKIYAMA	15.10.27				1/2

Aug.1.2016 Copyright 2016 HIROSE ELECTRIC CO., LTD. All Rights Reserved.



4 PACKING (QTY. 3000PCS)

A (2:1)

RECOMMENDED PANEL CUTOUT (4:1)

MATED WITH CORRESPONDING PLUG (4:1)

OUTLINE OF THE B KEY PLUG OF HIROSE'S MICRO USB 'ZX SERIES'

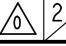
1. STORE CONNECTORS IN A TRAY.

2. BAND TRAYS AS SHOWN BELOW.

3. STORE 2 UNITS OF BANDED TRAY INTO A CARTON BOX (K-1)
(STORE A BOUNDARY PLATE ON TOP OF THE SURFACE, THEN CLOSE THE BOX BY STICKING GUMMED TAPE IN FOUR PARTS)

PACKING BOX (CARTON BOX)

CODE No.
PART No.
VOLUME
LOT No.

HRS	DRAWING NO.	EDC-126723-30-00	 2/2
	PART NO.	ZX80-B-5P(30)	
	CODE NO.	CL242-0051-0-30	