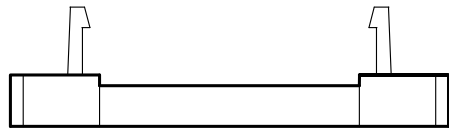
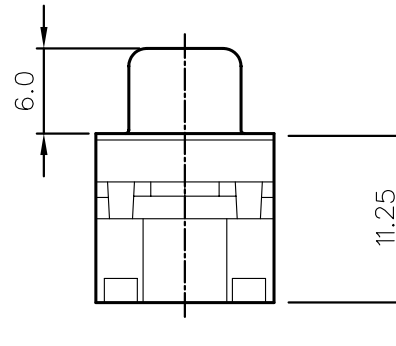
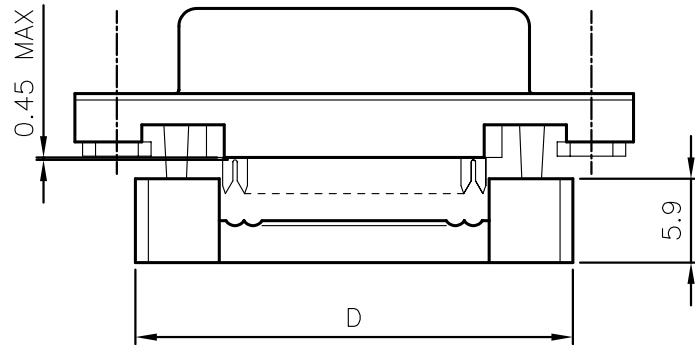


4#40 Thread



TECHNICAL CHARACTERISTICS

MATERIAL
 INSULATOR: PBT
 FLAMABILITY RATING: UL94-V0
 COLOR: BLUE
 CONTACT MATERIAL: COPPER ALLOY
 CONTACT TYPE: STAMPED
 CONTACT PLATING: SELECTIVE GOLD
 SHIELDING: STEEL TIN PLATED
 QUALITY CLASS: 3 AS PER CECC 75 301-802

ENVIRONMENTAL
 OPERATING TEMPERATURE: -40 UP TO 85°C
 COMPLIANCE: LEAD FREE AND ROHS

ELECTRICAL
 CURRENT RATING: 3A
 WORKING VOLTAGE: 250V AC
 INSULATOR RESISTANCE: >3000 MOHM
 DIELECTRIC WITHSTANDING VOLTAGE: 1000V AC/MN
 CONTACT RESISTANCE: 30 MOHM MAX

PACKAGING
 TRAY + BAG*
 *Strain relief is always delivered in a separate bag for optional use

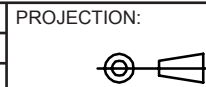
DIMENSION

PINS	A	B	C	D
9	16.92	25.00	30.80	22.40
15	25.25	33.30	39.20	30.80
25	38.96	47.10	53.10	44.50
37	55.42	63.50	69.40	61.40

NOTE

Pre-crim position (can slightly vary because of not totally fixed part)
 After crimp position (can slightly vary depends on the tooling used)

RoHS Compliant			
J	22-AUG-12	UL	GG
I	14-NOV-11	TOTAL HEIGHT	GG
H	31-AUG-11	DIM A	GG
REV	DATE	FILE	BY



APPROVAL: RJ

GENERAL TOLERANCE
 .X = +/- 0.2
 .XX = +/- 0.15



UNIT: MM
 SCALE:
 SHEET: 1/1
 DRAW: JOE

DESCRIPTION: MALE IDC WITH UNC 4-40 NUT D-SUB
 WERI PART NO: 618 0xx 226 221

SIZE
A4