

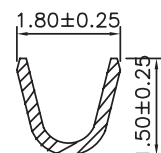
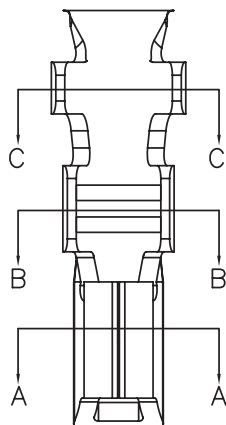
1

2

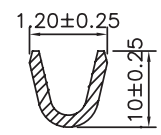
3

4

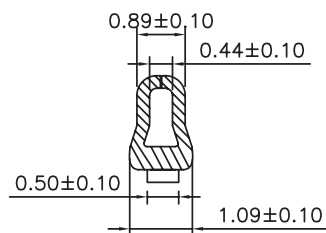
5



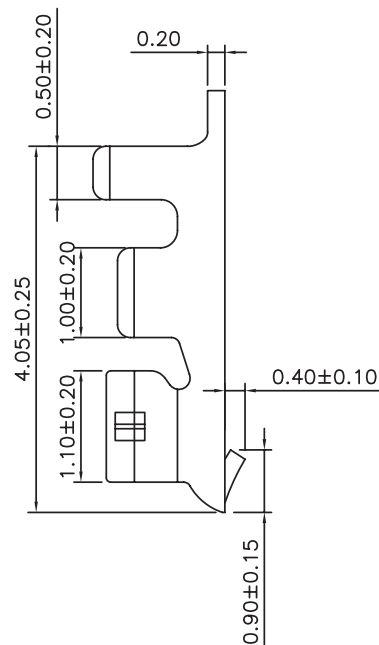
Sections:C-C



Sections:B-B



Sections:A-A



TECHNICAL CHARACTERISTICS

MATERIAL

CONTACT MATERIAL: COPPER ALLOY
 CONTACT TYPE: STAMPED
 CONTACT PLATING: TIN
 QUALITY CLASS: 25 MATING CYCLES
 PITCH: FOR 1.50MM

ENVIRONMENTAL

OPERATING TEMPERATURE: -25 UP TO 85°C
 COMPLIANCE: LEAD FREE AND ROHS

ELECTRICAL

CURRENT RATING: 1A
 WORKING VOLTAGE: 50V AC
 CONTACT RESISTANCE: 20 mOHM MAX

WIRE DIMENSION

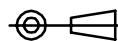
AWG: AWG 28 - 30

PACKAGING

BULK/LOOSE DELIVERY IN A BAG
 EACH TERMINAL SEPARATED FROM EACH OTHER
 NOT ON A REEL
 100PCS/PER BAG. MULTIPLE OF 100PCS ONLY
 1PC OF 64800113722DEC=1 CRIMP TERMINAL
 SO 1 BAG MEANS 100 PCS OF 64800113722DEC

RoHS Compliant

PROJECTION:



GENERAL TOLERANCE

.X = +/- 0.2

.XX = +/- 0.15



APPROVAL: RJ

UNIT: MM

DESCRIPTION: 1.50 MM FEMALE CRIMP TERMINAL

SIZE

B 07-AUG-13 CHARACTERISTIC QL

SCALE:

WERI PART NO: 64800113722DEC

A4

A 12-MAY-10 PDF JP

SHEET: 1/1

REV DATE FILE BY

DRAW: MIKE