

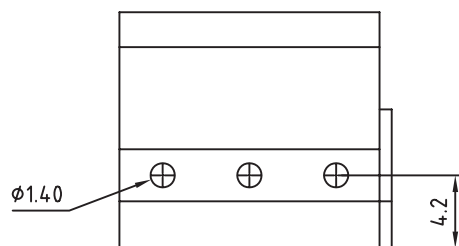
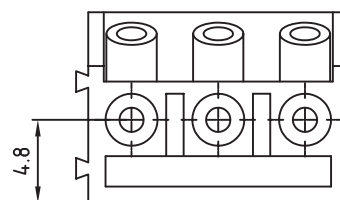
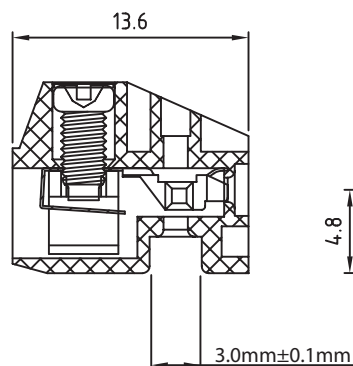
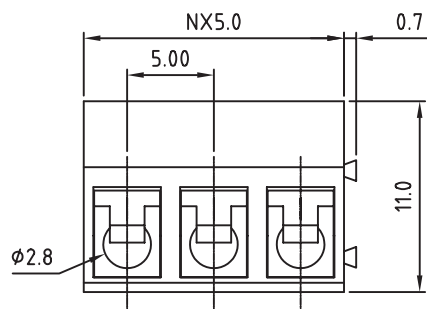
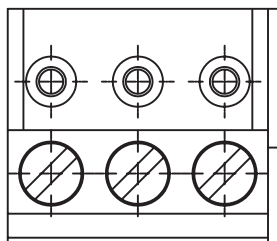
1

2

3

4

5



#### TECHNICAL CHARACTERISTICS

##### MATERIAL

INSULATOR: PA66  
 FLAMABILITY RATING: UL94-V0  
 COLOR: BLUE  
 METAL HOUSING: BRASS (CuZn)  
 TERMINAL SCREW: STEEL ZINC PLATING "-" SLOT TYPE  
 WIRE GUARD: PhBz

##### ENVIRONMENTAL

OPERATING TEMPERATURE: -40 UP TO 105°C  
 COMPLIANCE: LEAD FREE AND ROHS

##### ELECTRICAL

	cULus	VDE
CURRENT RATING:	15A	12A
WORKING VOLTAGE:	300VAC	300VAC
WITHSTANDING VOLTAGE:	1.6KV	2.5KV
CONTACT RESISTANCE:	20 mOhm MAX	

##### STANDARD

CERTIFIED E315414 / MODEL NUMBER 301  
 CERTIFIED 40024437 / MODEL NUMBER 301

##### MECHANICAL

SOLID WIRE:	22-14 AWG	0.33-2.0MM <sup>2</sup>
STRANDED WIRE:	22-14 AWG	0.33-2.0MM <sup>2</sup>
TORQUE:	3.5Lb.In / 0.4Nm	

WIRE STRIPE LENGTH: 5-6MM

SCREW: M2.6

PITCH: 5.0MM

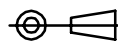
PACKAGING: BOX

SERIE 301

RoHS Compliant

REV	DATE	FILE	BY
A	30-OCT-07	PDF	EC
B	20-AUG-08	DESCRIPTION	CH
C	29-OCT-08	CHARACTERISTICS	JP
D	12-OCT-09	STANDARD	JP
E	18-JUL-14	DRAW. DIMENSION	AS
F			
G			

PROJECTION:



APPROVAL: RJ

GENERAL TOLERANCE

.X =  $\pm 0.2$

.XX =  $\pm 0.15$

UNIT: MM

SCALE:

SHEET: 1/1

DRAW: MARVIN



DESCRIPTION: SERIE 301 - 5.0MM MODULAR HORIZONTAL ENTRY MODULAR PLUG WITH PRESSURE CLAMP - 2.0MM<sup>2</sup> WIRES WR-TBL

WERI PART NO: 691 301 710 0xx

SIZE

**A4**