

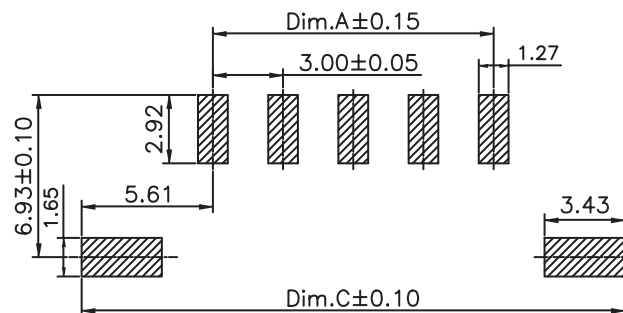
1

2

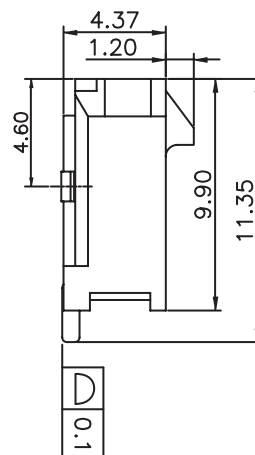
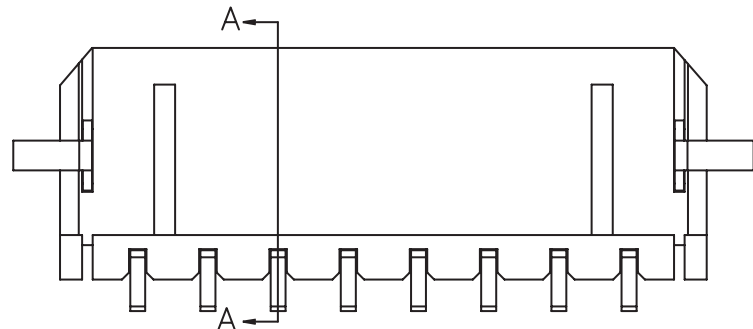
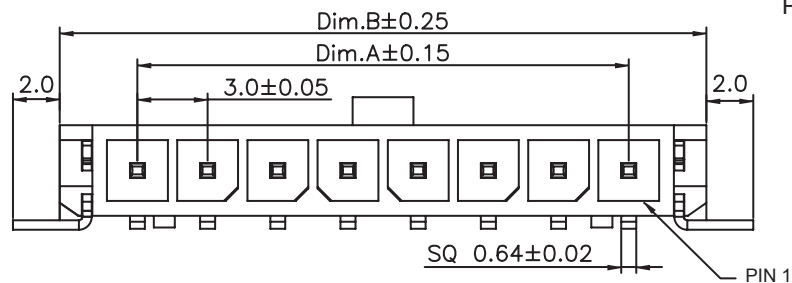
3

4

5



PCB LAYOUT - COMPONENT VIEW



## TECHNICAL CHARACTERISTICS

MATERIAL  
 INSULATOR: LCP  
 FLAMABILITY RATING: UL94-V0  
 COLOR: BLACK  
 CONTACT MATERIAL: COPPER ALLOY  
 CONTACT TYPE: STAMPED  
 CONTACT PLATING: TIN  
 QUALITY CLASS: 25 MATING CYCLES  
 PITCH: 3.00MM

ENVIRONMENTAL  
 OPERATING TEMPERATURE: -40 UP TO 105°C  
 COMPLIANCE: LEAD FREE AND ROHS

ELECTRICAL  
 CURRENT RATING: 5A  
 WORKING VOLTAGE: 250V AC  
 INSULATOR RESISTANCE: >1000 MOHM  
 DIELECTRIC WITHSTANDING VOLTAGE: 1500V AC/MN  
 CONTACT RESISTANCE: 10 mOHM MAX

STANDARD  
 CERTIFIED: E323964

SOLDERING  
 JEDEC LEAD FREE REFLOW PROCESS

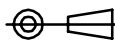
PACKAGING  
 TAPE & REEL

DIMENSION  
 A = 3.00 x (NB. PIN - 1)  
 B = 3.00 x (NB. PIN) + 3.65  
 C = 3.00 x (NB. PIN) + 8.20

RoHS Compliant

G	29-JUL-13	DWG & CARAC	QL
F	06-JUL-12	PLASTIC	GG
E	22-FEB-12	DESCRIPTION	GG
D	17-NOV-10	PINNING	GG
C	18-NOV-09	STANDARD	JP
B	23-AVR-09	PACKAGING	JC
A	05-MAR-09	PDF	JP
REV	DATE	FILE	BY

PROJECTION:



APPROVAL: RJ

GENERAL TOLERANCE

.X = +/- 0.2

.XX = +/- 0.15

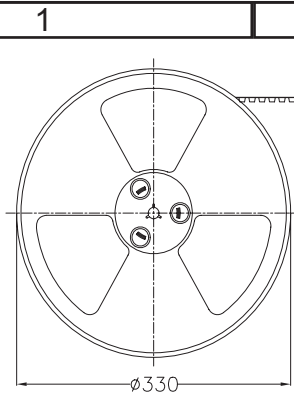


DESCRIPTION: 3.00MM SMD MALE SINGLE ROW ANGLED HEADER SMT  
 SOLDER TAB

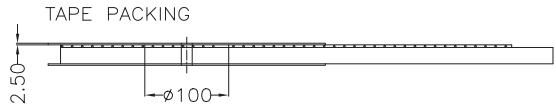
WERI PART NO: 662 1xx 145 021

SIZE

A4



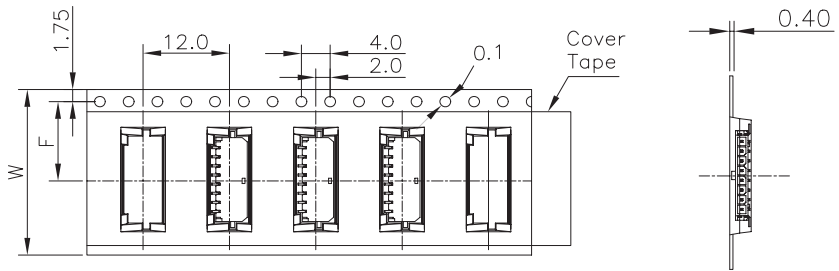
PULL OUT DIRECTION



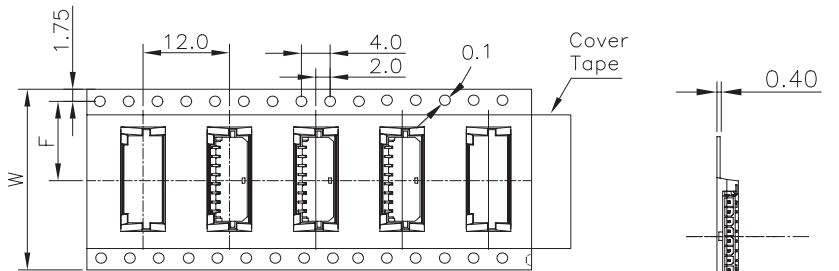
TAPE PACKING

2.50

∅100



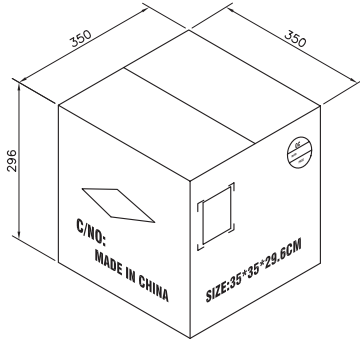
For Reel width (dimension W) 16,24mm  
Single row hole



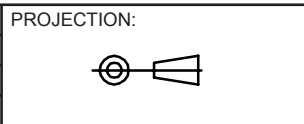
For Reel width (dimension W) 32,44,56,72mm  
Double rows hole

- Note:
- All dimensions meet EIA-481-3 requirements.
  - Material : BK Conductive Polystyrene Alloy  
100% recyclable.
  - Thickness : 0.50±0.05mm
  - Component load per 13" reel :400 pcs.
  - Carton Size:350\*350\*296(mm)
  - Need Vacuum Pack

Pin.	W	F	Pcs/R	R/Carton	Pcs/Carton
2	24	11.5	400	8	3200
3	32	14.2	400	6	2400
4	32	14.2	400	6	2400
5	44	20.2	400	5	2000
6	44	20.2	400	5	2000
7	44	20.2	400	5	2000
8	44	20.2	400	5	2000
9	56	26.2	400	3	1200
10	56	26.2	400	3	1200
11	56	26.2	400	3	1200
12	56	26.2	400	3	1200



RoHS Compliant			
G			
F			
E			
D			
C			
B			
A			
REV	DATE	FILE	BY



GENERAL TOLERANCE  
.X = +/- 0.2  
.XX = +/- 0.15

APPROVAL: RJ

UNIT: MM  
SCALE:  
SHEET: 2/2  
DRAW: PEARL



DESCRIPTION: 3.00MM SMD MALE SINGLE ROW ANGLED HEADER - SMT  
SOLDER TAB  
WERI PART NO: 6621 xx 145021\_TPK

SIZE  
**A4**