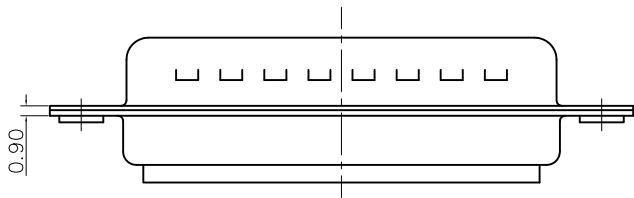
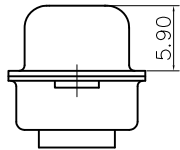
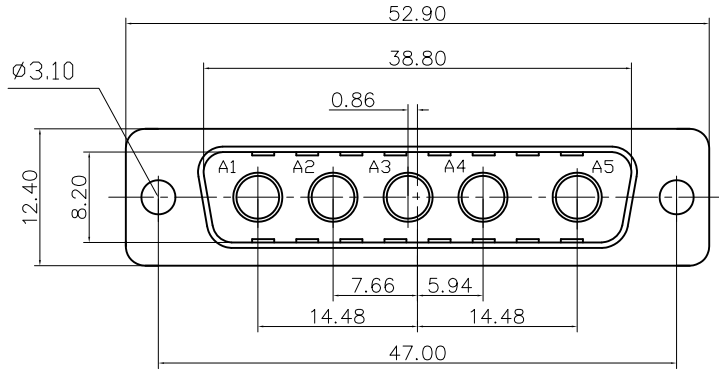


This document is the property of Amphenol Corporation and is delivered on the express condition that it is not to be disclosed, reproduced or used, in whole or in part, for manufacture or sale by anyone other than Amphenol Corporation without its prior consent, & that no right is granted to disclose or to use any information in this document.



Customer drawing

REVISIONS				
SYM	ECN	DESCRIPTION	DATE	APPROVED
1	HK--	First Release Drawing	12/14/07	IP

D-SUB TECHNICAL DATA

SHELL : Steel 2.5um(100u") min tin over 1.25um(50u") min nickel
 BODY : Glass filled thermoplastic.
 Flame retardant to UL94 V-0 color black
 ELECTRICAL : Withstanding Voltage >1000 V RMS at 50 Hz for one minute
 Insulation resistance >5000 M Ohms
 CLIMATIC : Temperature range -55 °C up to 155°C
 Damp heat 56 days(40 °C-95% HR)
 MARKING : Amphenol...(Series No.)
 Manufacturing date
 Commercial reference

PRODUCT CODE

L 717TW B 5W5 P

L: RoHS Compliance

Contact type:
P: Male

Configuration: 5W5

717TW: tin plated shell with dimples

Shell Size :B

UNLESS OTHERWISE SPECIFIED TOLERANCES U.S. METRIC .X +/- 0.50 .XX +/- 0.30 .XXX +/- 0.20 FRACTIONS +/- 2' ANGLES +/- FOR MATERIALS AND FINISHES SEE NOTES REMOVE SHARP EDGES DIMENSIONS U.S. INCHES METRIC MM	APPROVAL DRAWN Christina.ou 12/14/07 CHECKED ltk.wang 12/14/07 CHECKED	DATE 12/14/07
	DRAWING FILE :	
	ANGLE OF PROJECTION	

Amphenol Amphenol East Asia Limited		
TITLE Hybrid connector, TW series		
SIZE A4	DRAWING NO. C L717TWB5W5P	REV. 1
SCALE NONE	SHEET 1 OF 1	