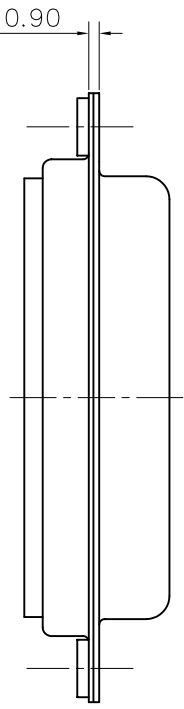
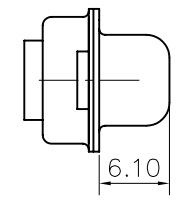
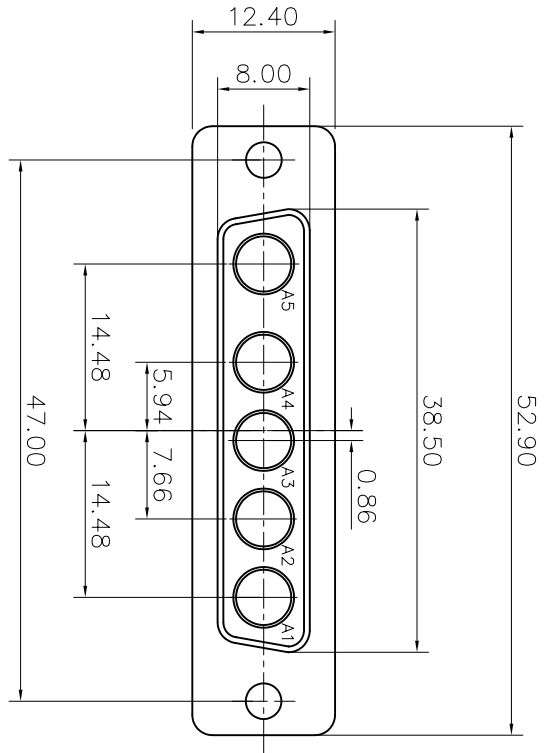


This document is the property of Amphenol Corporation and is supplied on the express condition that it is not to be disclosed, reproduced or used, in whole or in part, for any purpose other than that for which it was originally prepared without the prior consent, in writing, of Amphenol Corporation. No right is granted to disclose or to use any information in this document.

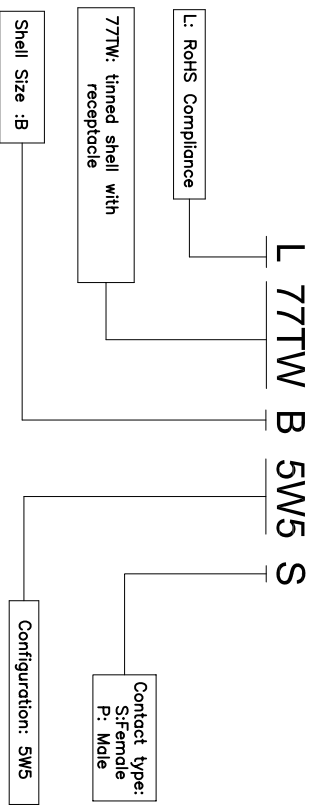
REVISED		DATE	APPROVED
S/M	EON	DESCRIPTION	
A		09/05/07	

D-SUB TECHNICAL DATA

SHELL : Steel 2.5um(100u") min tin over 1.25um(50u") min nickel
 BODY : Glass filled thermoplastic.
 Flame retarding to UL94 V-0 Color Black
 ELECTRICAL : Withstanding Voltage >1000 V RMS at 50 Hz for one minute
 Insulation resistance >5000 M Ohms
 CLIMATIC : Temperature range -55 °C up to 155°C
 Damp heat 56 days(40 °C-95% HR)
 MARKING : Amphenol...(Series No.)
 Manufacturing date
 Commercial reference



PRODUCT CODE



UNLESS OTHERWISE SPECIFIED		APPROVAL	DATE
TOLERANCES		DRAWN	09/05/07
U.S.		CHECKED	10/05/07
METRIC		CHECKED	09/05/07
X +/-	0.50	TITLE Hybrid connector, TW series	
XX +/-	0.30		
XXX +/-	0.20		
FRACTIONS +/-	2'		
FOR MATERIALS AND FINISHES			
REMOVE SHARP EDGES			
DIMENSIONS		ANGLE OF PROJECTION	
THIS DRAWING	INCHES	FIRST ANGLE	
SCALE		SIZE	REV.
NONE		A4	A
SHEET		REV.	
1 OF 1		A	