

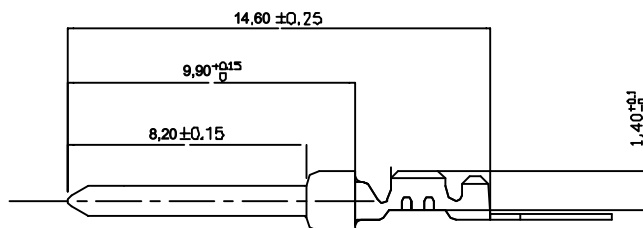
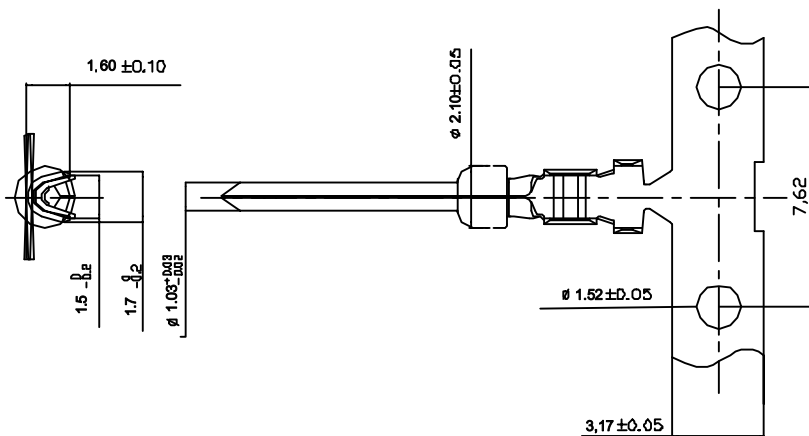
This document is the property of Amphenol Corporation and is delivered on the express condition that it is not to be disclosed, reproduced or used, in whole or in part, for the manufacture or sale by anyone other than Amphenol Corporation without its prior consent, and that no right is granted to disclose or to use any information in this document.



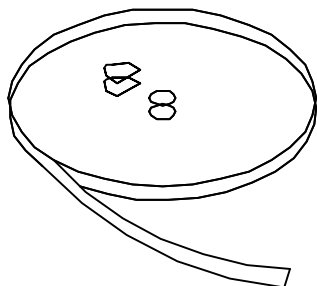
SPECIFICATIONS

Material : Brass
 Burr : 0,1mm Max. on mating area
 Camber : 0,1mm Max.
 Deformation : 0,05mm Max.
 Plating : see table below
 Underplating : 50µ" Nickel

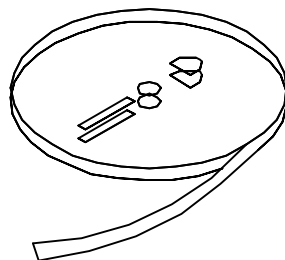
RoHS compliant
 MSL components : level 3



Note



Left feed reel



Right feed reel

L17RR D2M -- 10K

Plating :
 01 : 5µ" full Gold
 02 : 15µ" full Gold
 04 : 30µ" full Gold

11 : 5µ" selective Gold
 (tails 78µ" Tin)
 12 : 15µ" selective Gold
 (tails 78µ" Tin)
 14 : 30µ" selective Gold
 (tails 78µ" Tin)

Packaging :
 Reel of 10000 contacts

G = Left feed reel
 K = Right feed reel
 see note

TOLERANCE (mm)		APPROVALS	DATE	TITLE	AMPHENOL	
X	±0.25	DRAWN GDU	11/09/06	Rear Release D SUB Crimp male contacts AWG 24-28	AMPHENOL SOCAPEX	
X.X	±0.13	CHECKED P.G	11/09/06		Dole Business Unit	
XXX	±0.05	APPROVED P.G	11/09/06		Scale N.A.	Sheet 1 of 1
Angular	±0°30'					
UNLESS OTHERWISE SPECIFIED				UNIT : MM	SIZE : DRAWING N° A4	L17RR D2M -- -- --
					REV. A	