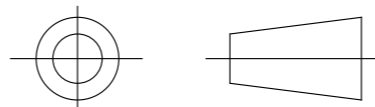


DRAWING No.  
**152146**

SHT. 1  
OF  
1 SHTS.

© THE COPYRIGHT OF THIS DRAWING IS RESERVED BY HELLERMANN TYTON. IT IS ISSUED ON CONDITION THAT IT IS NOT COPIED, REPRODUCED OR DISCLOSED TO A THIRD PARTY EITHER WHOLLY OR IN PART WITHOUT THE CONSENT IN WRITING OF HELLERMANN TYTON.

THIRD ANGLE PROJECTION

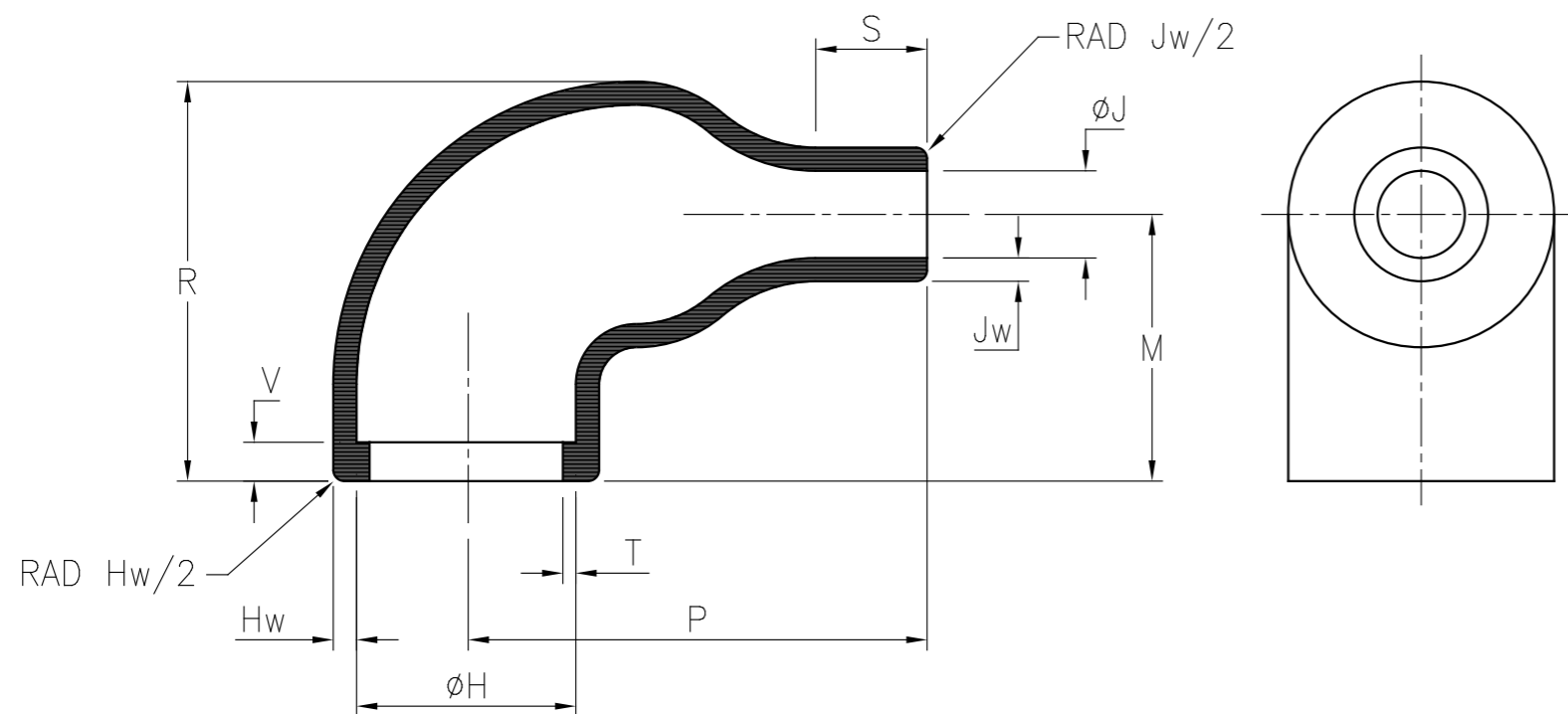


BS 8888

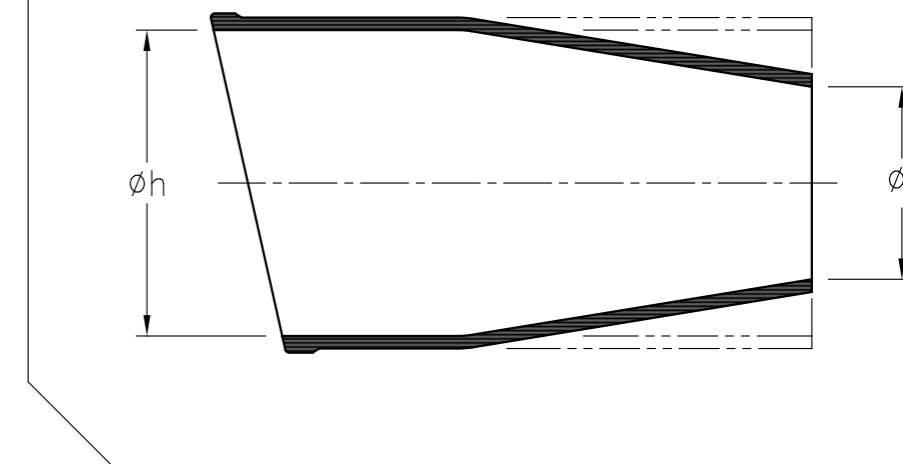
DO NOT SCALE  
IF IN DOUBT ASK

Q.A.	H/S SETT
H/S Q.A.	REL. INSP.
H/S PROD	EXT.ISS.CODE 7

STANDARD PART (AFTER UNRESTRICTED RECOVERY)

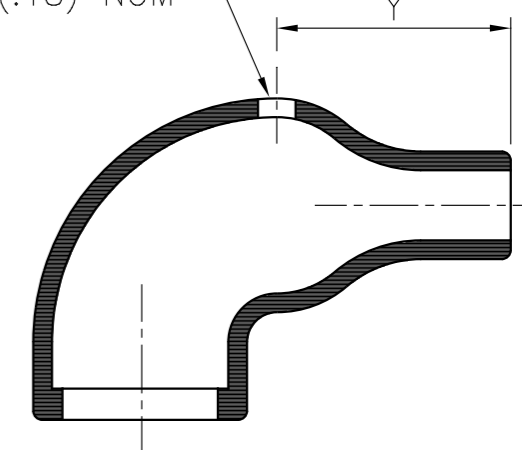


EXPANDED (AS SUPPLIED)



OPTION TO STANDARD PART  
FILLER PORT (CODE P1)

1 FILLER PORT HOLE  
ø4.5 (.18) NOM



PART No.	EXPANDED DIAMETERS (AS SUPPLIED)		RECOVERED DIAMETERS		RECOVERED DIMENSIONS							
	øh	øj	øH	øJ	M	P	R	S	T	V	Hw	Jw
	MIN	MIN	MAX	MAX	NOM	±10%	±10%	NOM	±20%	MAX	±20%	±30%
1108-4	16.5 (.65)	16.5 (.65)	7.9 (.31)	2.5 (.10)	15.2 (.60)	18.3 (.72)	20.1 (.79)	5.1 (.20)	1.0 (.04)	3.3 (.13)	1.0 (.04)	1.6 (.06)
1108-5	16.5 (.65)	7.6 (.30)	7.9 (.31)	2.5 (.10)	15.2 (.60)	18.3 (.72)	20.1 (.79)	5.1 (.20)	1.0 (.04)	3.3 (.13)	1.0 (.04)	1.6 (.06)

OPTIONAL FILLER PORT DETAIL	
PART No.	RECOVERED DIMENSIONS
	Y
1108-4	10 (.39)
1108-5	10 (.39)

**HellermannTyton**

William Prance Road,  
Plymouth International Med. & Tech. Park,  
Plymouth, PL6 5WR  
Tel ++44 (0) 1752 701261  
Fax ++44 (0) 1752 790058

NAME	S.Almond	SCALE	NTS	ADHESIVE	A3 ORIGINAL SHEET SIZE 420mm x 297mm	SHT. 1 OF 1 SHTS.
DATE	28/05/08	DIMS IN	mm (in)			
TITLE	RT. ANGLE SLEEVE (RIBBED)		PART No.	1108	DRAWING No.	152146

2	P1329	G.B.	11/10/10
1	P1201	S.Almond	28/05/08
ISSUE	NOTE No.	DRAWN	DATE