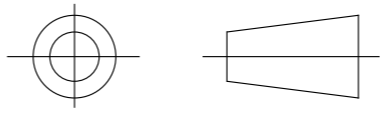


DRAWING No.
152179

SHT. 1
OF
1 SHTS.

© THE COPYRIGHT OF THIS DRAWING IS RESERVED BY HELLERMANN TYTON. IT IS ISSUED ON CONDITION THAT IT IS NOT COPIED, REPRODUCED OR DISCLOSED TO A THIRD PARTY EITHER WHOLLY OR IN PART WITHOUT THE CONSENT IN WRITING OF HELLERMANN TYTON.

THIRD ANGLE PROJECTION

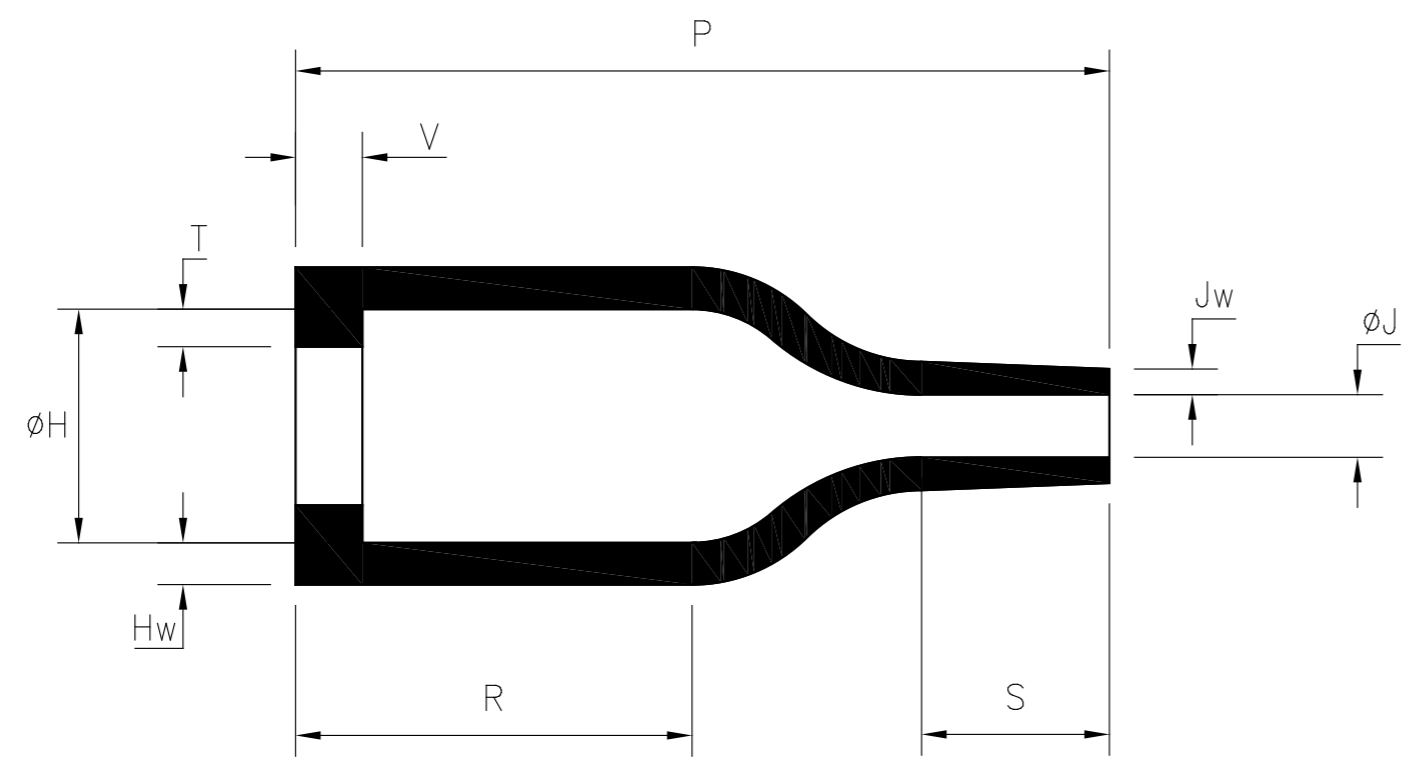


BS 8888

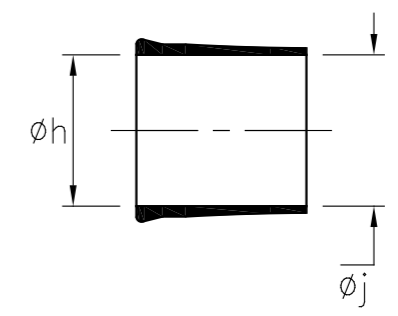
DO NOT SCALE
IF IN DOUBT ASK

Q.A.	H/S SETT
H/S Q.A.	REL. INSP.
H/S PROD	EXT.ISS.CODE 7

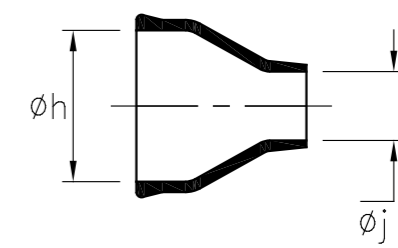
STANDARD PART (AFTER UNRESTRICTED RECOVERY)



EXPANDED (AS SUPPLIED) 1037-4



EXPANDED (AS SUPPLIED) 1037-5



PART No.	EXPANDED DIAMETERS (AS SUPPLIED)		RECOVERED DIAMETERS		RECOVERED DIMENSIONS						
	ϕh	ϕj	ϕH	ϕJ	P	R	S	T	V	Hw	Jw
	MIN	MIN	MAX	MAX	$\pm 10\%$	$\pm 10\%$	$\pm 10\%$	$\pm 20\%$	MAX	$\pm 20\%$	$\pm 30\%$
1037-4	9.0 (0.35)	9.0 (0.35)	5.6 (0.22)	2.0 (0.08)	19.0 (0.75)	9.0 (0.35)	4.5 (0.16)	0.6 (0.02)	1.5 (0.06)	1.0 (0.04)	0.6 (0.02)
1037-5	9.0 (0.35)	4.0 (0.16)	5.6 (0.22)	2.0 (0.08)	19.0 (0.75)	9.0 (0.35)	4.5 (0.16)	0.6 (0.02)	1.5 (0.06)	1.2 (0.05)	0.8 (0.03)

4	P1329	G.B.	11/10/10
3	P1309	CM	15/04/10
2	P1259	L.F.	16/02/09
1	P1248	G.B.	10/12/08
ISSUE	NOTE No.	DRAWN	DATE

HellermannTyton
 William Prance Road,
 Plymouth International Med. & Tech. Park,
 Plymouth, PL6 5WR
 Tel ++44 (0) 1752 701261
 Fax ++44 (0) 1752 790058

NAME	G.Baser	SCALE	NTS
DATE	10/12/08	DIMS IN	mm (in)
TITLE	BOTTLE SLEEVE (RIBBED)		

ADHESIVE	A3	SHT. 1
	ORIGINAL SHEET SIZE 420mm x 297mm	OF 1 SHTS.
PART No.	1037	DRAWING No.
		152179