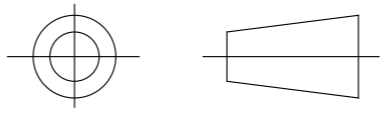


DRAWING No.  
**152165**

SHT. 1  
OF  
1 SHTS.

© THE COPYRIGHT OF THIS DRAWING IS RESERVED BY HELLERMANN TYTON. IT IS ISSUED ON CONDITION THAT IT IS NOT COPIED, REPRODUCED OR DISCLOSED TO A THIRD PARTY EITHER WHOLLY OR IN PART WITHOUT THE CONSENT IN WRITING OF HELLERMANN TYTON.

THIRD ANGLE PROJECTION



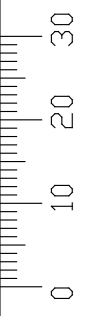
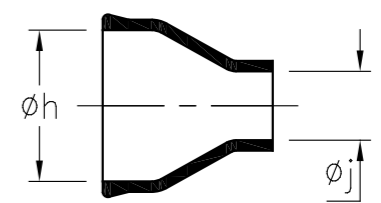
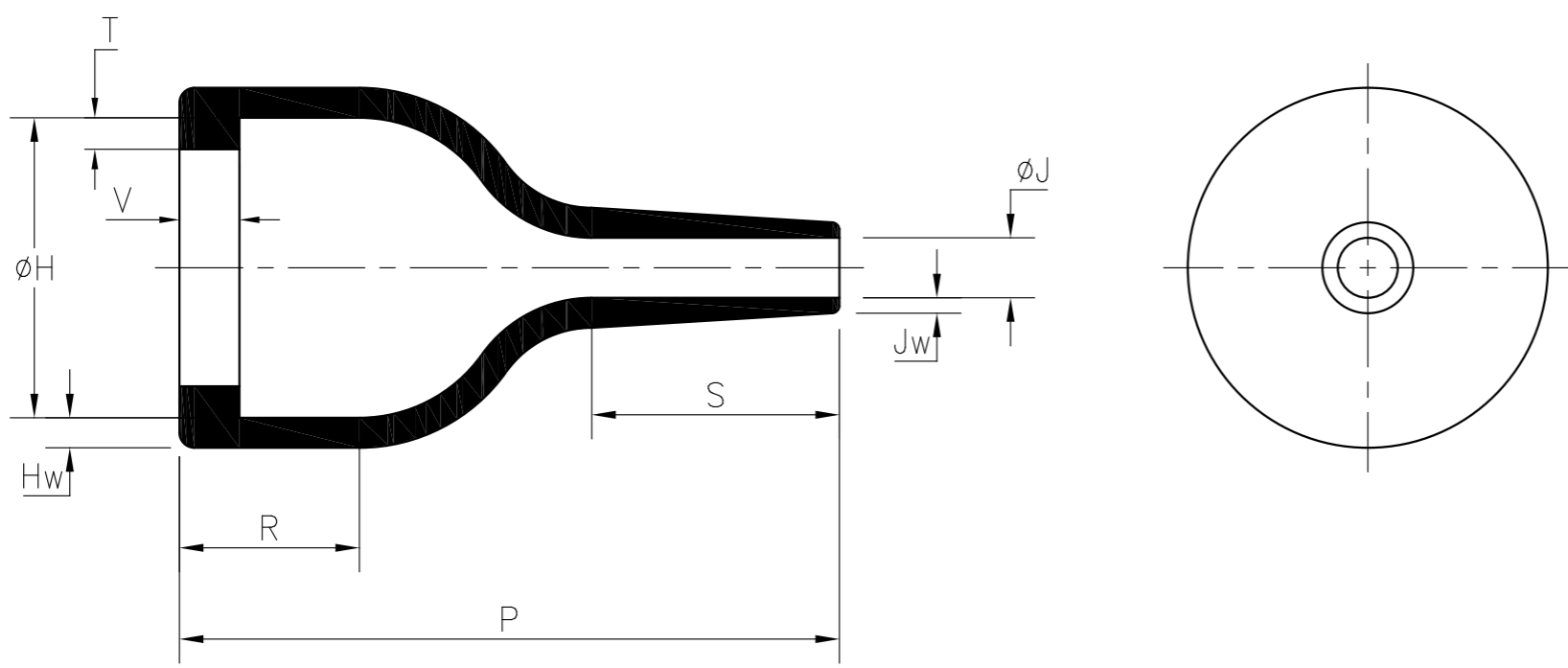
BS 8888

DO NOT SCALE  
IF IN DOUBT ASK

Q.A.	H/S SETT
H/S Q.A.	REL. INSP.
H/S PROD	EXT. ISS. CODE 7

STANDARD PART (AFTER UNRESTRICTED RECOVERY)

EXPANDED (AS SUPPLIED)



PART No.	EXPANDED DIAMETERS (AS SUPPLIED)		RECOVERED DIAMETERS		RECOVERED DIMENSIONS							APPROX. WEIGHT (g)
	phi h	phi j	phi H	phi J	P	R	S	T	V	Hw	Jw	
	MIN	MIN	MAX	MAX	±10%	±10%	±10%	±20%	MAX	±20%	±30%	
1030-4	12.0 (0.47)	6.0 (0.24)	9.8 (0.39)	2.0 (0.08)	19.0 (0.75)	8.0 (0.31)	4.6 (0.18)	0.6 (0.02)	1.5 (0.06)	1.0 (0.04)	0.5 (0.02)	0.6
1030-5	12.0 (0.47)	4.0 (0.16)	9.8 (0.39)	2.0 (0.08)	19.0 (0.75)	8.0 (0.31)	4.6 (0.18)	0.6 (0.02)	1.5 (0.06)	1.0 (0.04)	0.5 (0.02)	0.6

**NOTE**  
2.0 mm DIAMETER TAIL DIMENSION EXPANDED TO 6.0 mm WILL ACCOMMODATE MIN & MAX WIRE BUNDLES  
MIN - 2 x 28 AWG + 1/8" SLEEVING 3.0 mm DIAMETER  
MAX - 5 x 24 AWG + 3/16" SLEEVING 4.0 mm DIAMETER

3	P1329	G.B.	11/10/10
2	P1309	CM	15/04/10
1	P1227	G.B.	18/08/08
ISSUE	NOTE No.	DRAWN	DATE

**HellermannTyton**  
William Prance Road,  
Plymouth International Med. & Tech. Park,  
Plymouth, PL6 5WR  
Tel ++44 (0) 1752 701261  
Fax ++44 (0) 1752 790058

NAME **G.Baser** SCALE NTS  
DATE **18/08/08** DIMS IN mm (in)  
TITLE **BOTTLE SLEEVE (RIBBED)**

ADHESIVE  
A3 ORIGINAL SHEET SIZE 420mm x 297mm  
SHT. 1 OF 1 SHTS.  
PART No. **1030**  
DRAWING No. **152165**