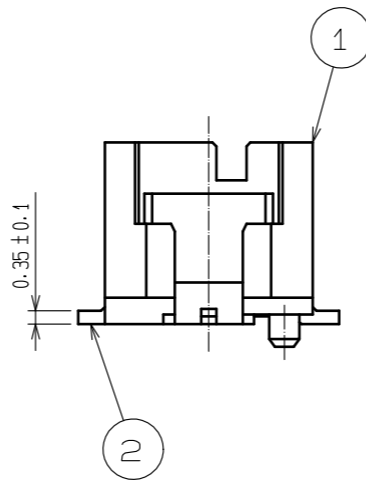
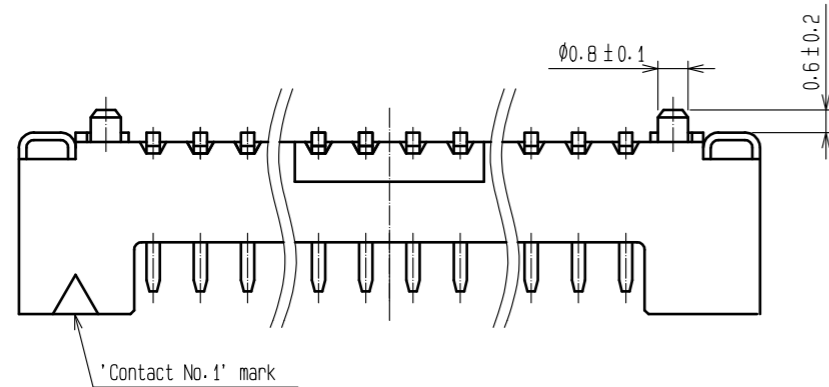
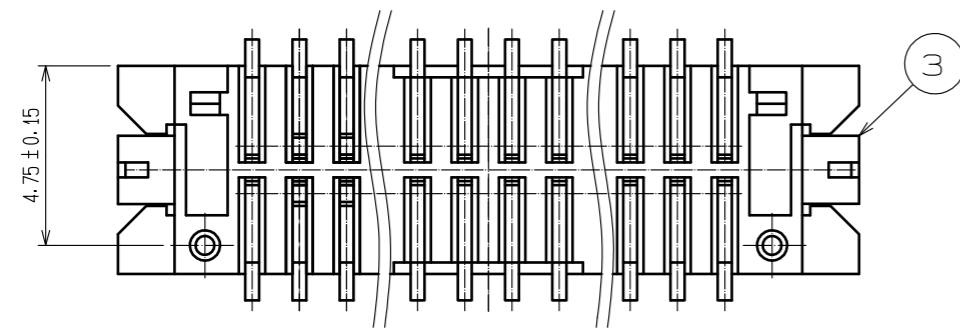
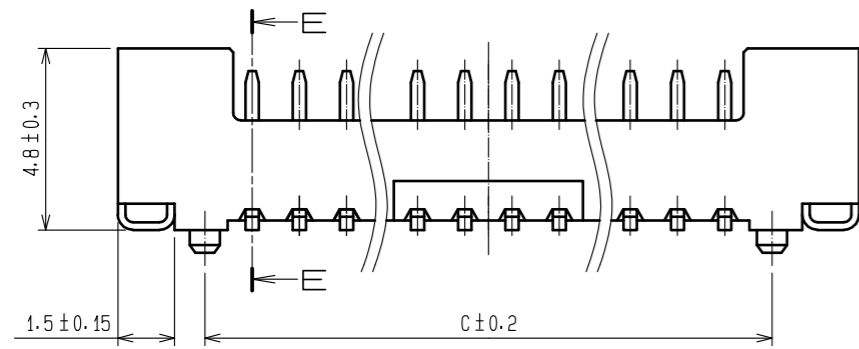
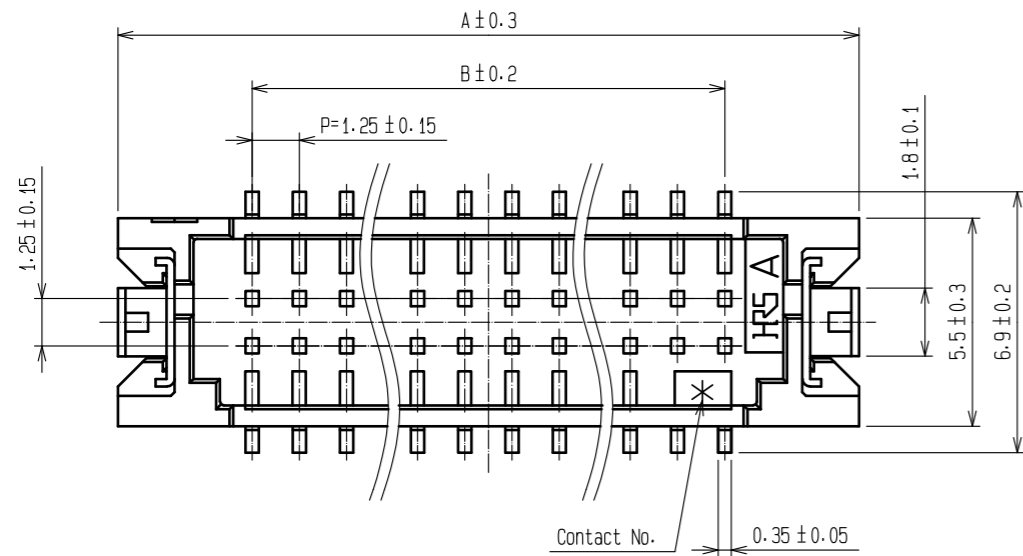
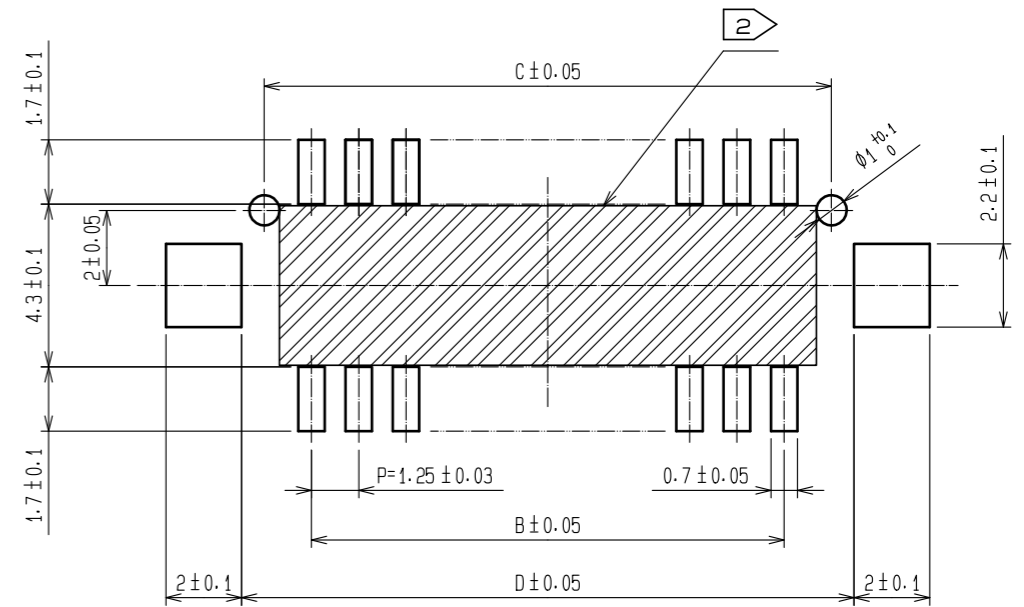


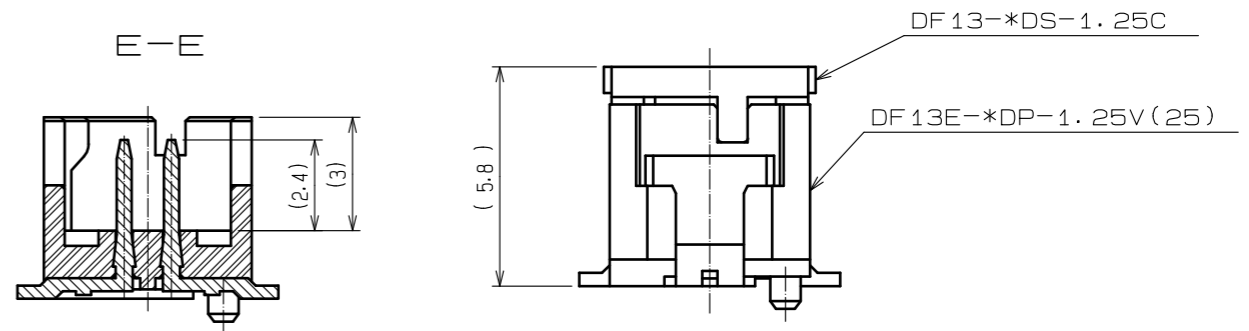
| Applicable standard | | | | | |
|---|--|--|---------------------------|---------------------------------|------------------|
| Rating | Operating temperature range | -35°C to +85°C(Note 1) | Storage temperature range | -10°C to +60°C(Note 3) | |
| | Operating humidity range | 20 % to 80 % (Note 2) | Storage humidity range | 40 % to 70 %(Note 3) | |
| | Voltage | 150 V AC (DC) | Current | 1 A | |
| | Applicable Connector | DF13-*DS-1.25C | Applicable Contact | DF13(G)-2630SCF DF13-3032SCF | |
| Specifications | | | | | |
| Item | Test method | Requirements | QT | AT | |
| Construction | | | | | |
| General examination | Visually and by measuring instrument. | According to drawing. | X | X | |
| Marking | Confirmed visually. | | X | X | |
| Electric characteristics | | | | | |
| Contact resistance | 100 m A (DC or 1000 Hz). | 30 mΩ MAX. | X | — | |
| Insulation resistance | 100 V DC. | 500 MΩ MIN. | X | — | |
| Voltage proof | 500 V AC for 1 min. | No flashover or breakdown. | X | — | |
| Mechanical characteristics | | | | | |
| Mechanical operation | 30 times insertions and extractions. | ① Contact resistance: 30 mΩ MAX. ② No damage, crack or looseness of parts. | X | — | |
| Vibration | Frequency 10 to 55 Hz, single amplitude 0.75 mm, at 2 h, for 3 directions. | ① No electrical discontinuity of 1μs. ② No damage, crack or looseness of parts. | X | — | |
| Shock | 490 m/s ² duration of pulse 11 ms at 3 times for 3 directions. | | X | — | |
| Environmental characteristics | | | | | |
| Rapid change of temperature | Temperature -55→ 15 to 35→+85→ 15 to 35 °c Time 30→ 2 to 3 → 30→ 2 to 3 min. Under 5 cycles. | ① Contact resistance: 30mΩ MAX. ② Insulation resistance: 500 MΩ MIN. ③ No damage, crack or looseness of parts. | X | — | |
| Damp heat (Steady state) | Exposed at 40 ± 2 °c, 90 to 95 %, 96 h. | | X | — | |
| Resistance to soldering heat | 1) Reflow soldering « Reflow area » 250°C MAX 10 sec MAX 230°C MIN 60 sec MAX « Preheating area » 170°C to 190°C 60 sec to 120 sec Put through in reflow furnace twice, leave in ambient temperature and humidity for 1 hour. 2) Manual soldering Soldering iron temperature :300°C, Soldering time : 3sec. No strength on contact. | No deformation of case of excessive looseness of the terminals. | X | — | |
| Solderability | Soldered at solder temperature, 245°C for insertion duration, 3sec. | Solder shall cover a minimum of 95 % of the surface being immersed. | X | — | |
| Remarks | | | | | |
| Note 1:Include the temperature rising by current. | | | | | |
| Note 2:No condensing | | | | | |
| Note 3:Apply to the condition of long term storage for unused products before pcb on board, after pcb on board, operating temperature and humidity range is applied for interim storage during transportation. | | | | | |
| | Count | Description of revisions | Designed | Checked | Date |
| | | | | | |
| Unless otherwise specified, refer to IEC 60512. | | | Approved | KI. AKIYAMA | 16. 04. 04 |
| | | | Checked | TS. FUKUSHIMA | 16. 04. 04 |
| | | | Designed | YK. YAMAGUCHI | 16. 04. 04 |
| | | | Drawn | MI. SAKIMURA | 16. 04. 01 |
| Note QT:Qualification Test AT:Assurance Test X:Applicable Test | | | Drawing no. | | ELC-367983-25-00 |
| | Specification sheet | | Part no. | DF13E-*DP-1. 25V (25) | |
| | Hirose electric co., ltd. | | Code no. | CL536 | 1/1 |



Recommended pattern



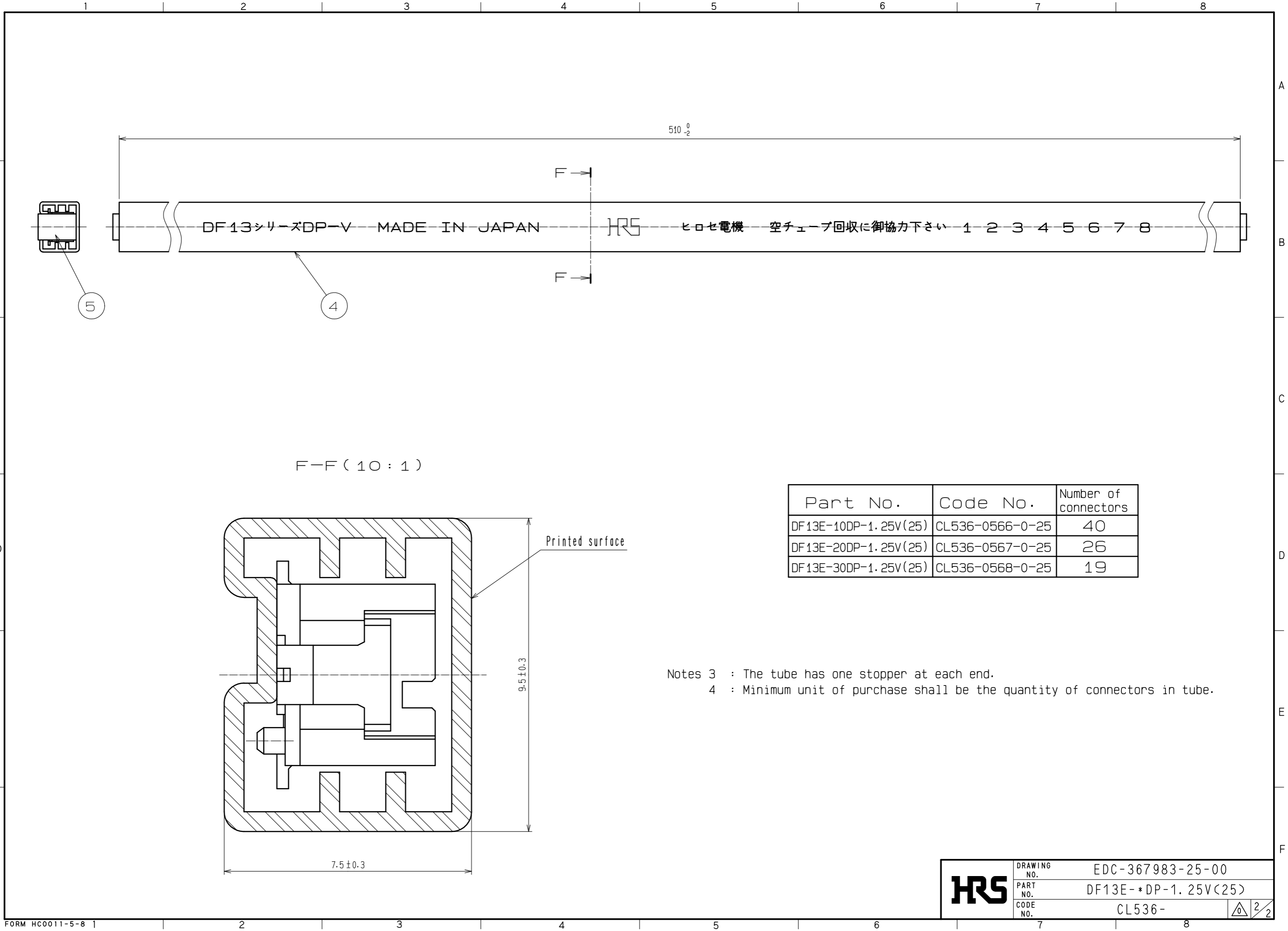
Mated connectors



Notes 1 : Lead co-planality include reinforced metal fittings shall be 0.1mm MAX.
 ② : If there are pattern and a bia hole on part, there is a possibility that it will make contact with the leads.

| Part No. | Number of contacts | Code No. | A | B | C | D |
|----------------------|--------------------|-----------------|-------|-------|-------|-------|
| DF13E-10DP-1.25V(25) | 10 | CL536-0566-0-25 | 12.1 | 5.0 | 7.5 | 8.7 |
| DF13E-20DP-1.25V(25) | 20 | CL536-0567-0-25 | 18.35 | 11.25 | 13.75 | 14.95 |
| DF13E-30DP-1.25V(25) | 30 | CL536-0568-0-25 | 24.60 | 17.50 | 20.00 | 21.20 |

| 2 | Brass | Lead area: Tin-copper plated 1µm MIN | 5 | S. PVC | Gray | | |
|-----------------------------------|-----------|--------------------------------------|------------------------------|--------------------------|--------------------------|---------|------|
| | | Under plating: Nickel 0.5µm MIN | 4 | R. PVC | Electrostatic protection | | |
| 1 | Polyamide | Beige, UL94V-0 | 3 | Phosphor bronze | Tin plated 1µm MIN | | |
| NO. | MATERIAL | FINISH . REMARKS | NO. | MATERIAL | FINISH . REMARKS | | |
| UNITS mm | | SCALE 5 : 1 | COUNT | DESCRIPTION OF REVISIONS | DESIGNED | CHECKED | DATE |
| APPROVED : KI. AKIYAMA 16.04.04 | | | DRAWING NO. EDC-367983-25-00 | | | | |
| CHECKED : TS. FUKUSHIMA 16.04.04 | | | PART NO. DF13E-*DP-1.25V(25) | | | | |
| DESIGNED : YK. YAMAGUCHI 16.04.04 | | | CODE NO. CL536- | | | | |
| DRAWN : MI. SAKIMURA 16.04.01 | | | | | | | |



| Part No. | Code No. | Number of connectors |
|----------------------|-----------------|----------------------|
| DF13E-10DP-1.25V(25) | CL536-0566-0-25 | 40 |
| DF13E-20DP-1.25V(25) | CL536-0567-0-25 | 26 |
| DF13E-30DP-1.25V(25) | CL536-0568-0-25 | 19 |

Notes 3 : The tube has one stopper at each end.
 4 : Minimum unit of purchase shall be the quantity of connectors in tube.

HRS

| | |
|-------------|---------------------|
| DRAWING NO. | EDC-367983-25-00 |
| PART NO. | DF13E-*DP-1.25V(25) |
| CODE NO. | CL536- |

2/2