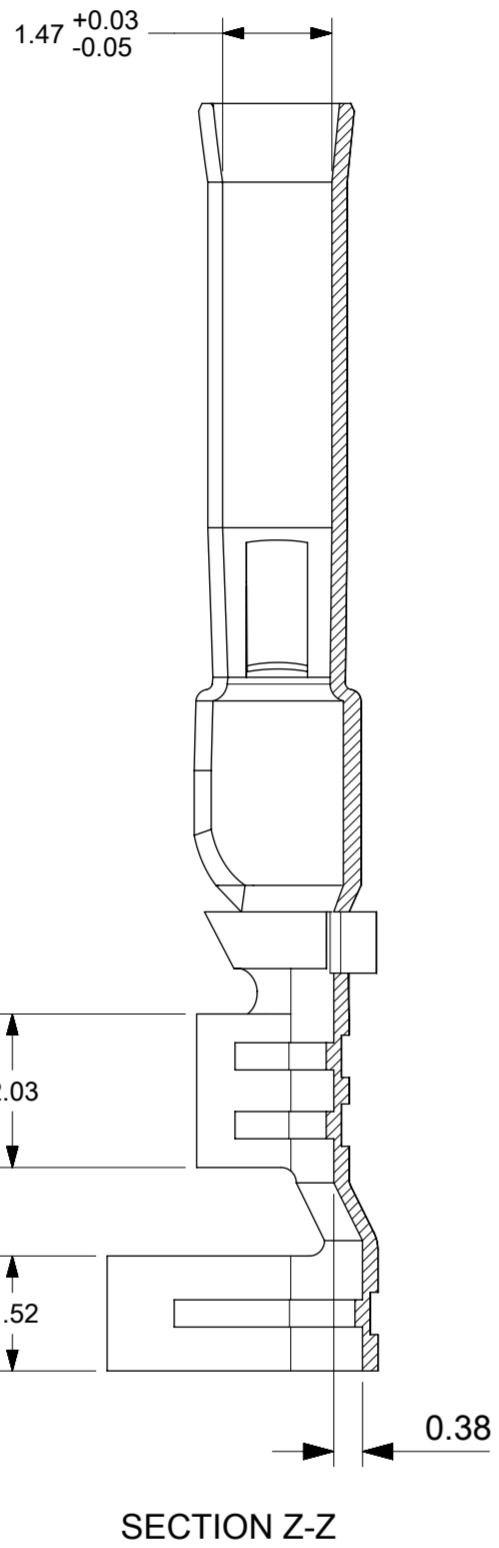
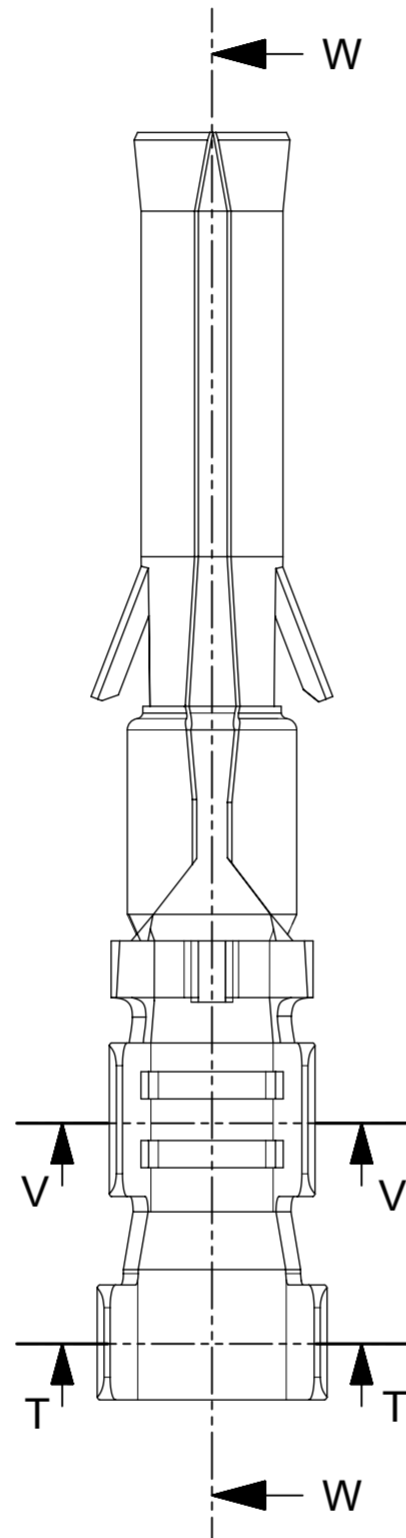


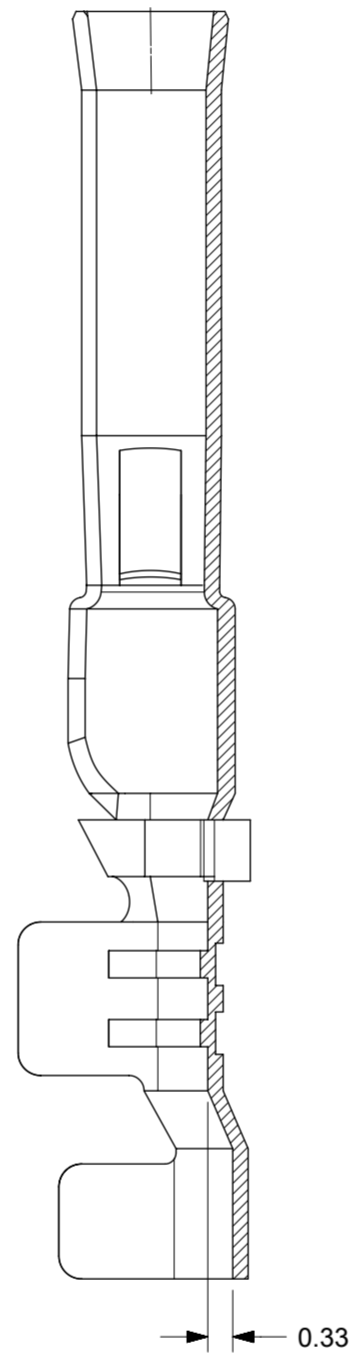
20-22 AWG TERMINAL



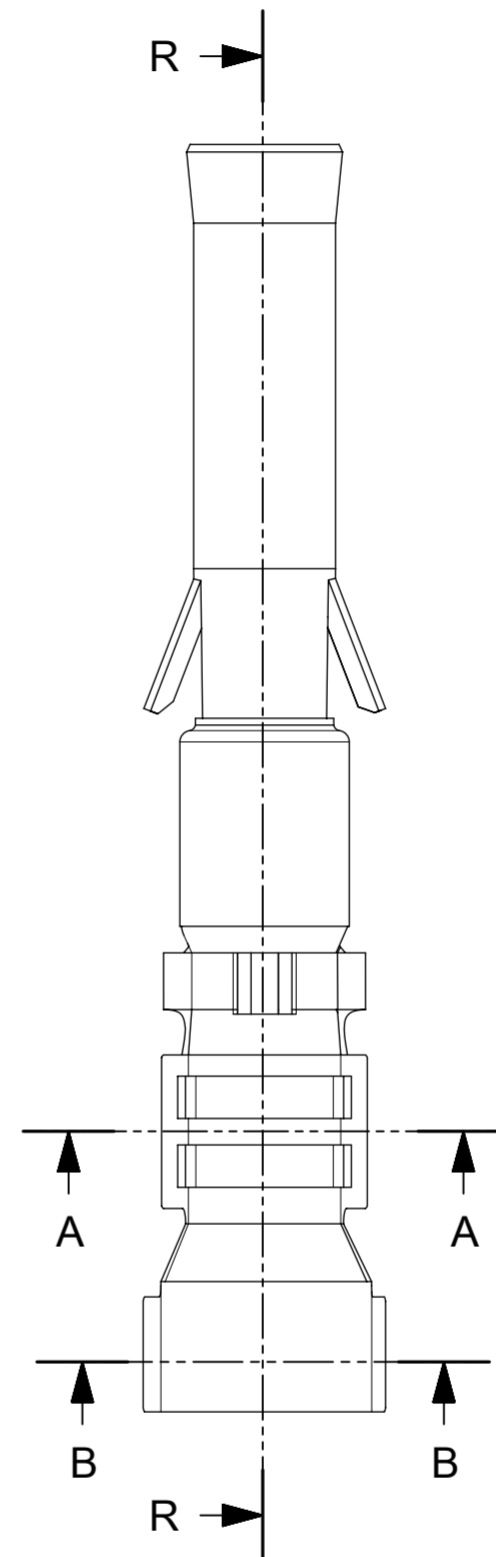
SECTION Z-Z



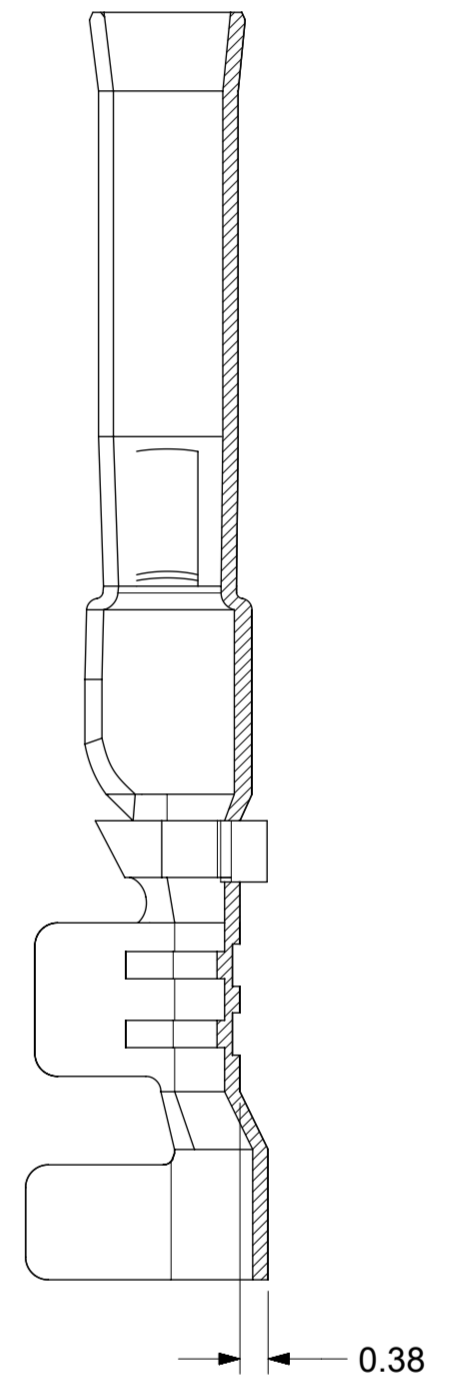
16-18 AWG TERMINAL



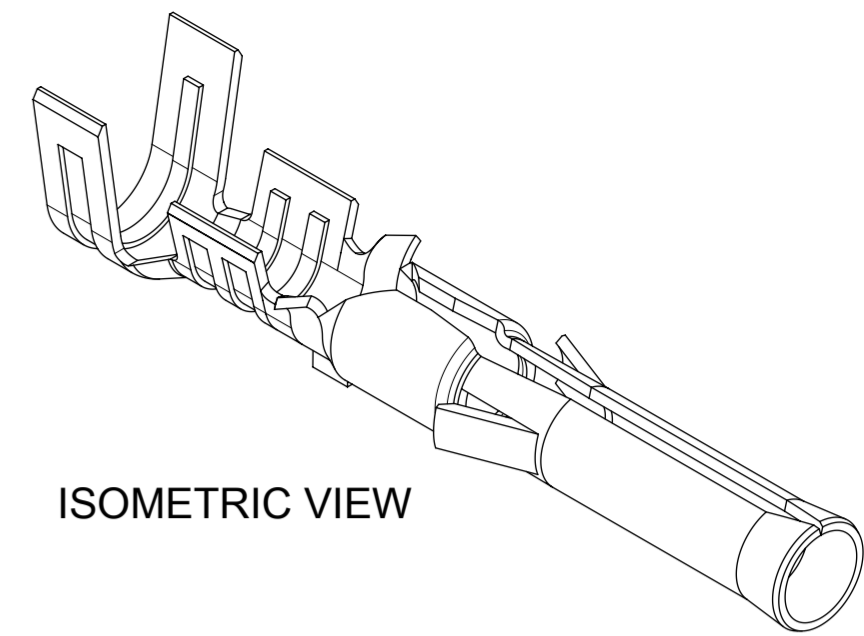
SECTION W-W



16 AWG TERMINAL



SECTION R-R

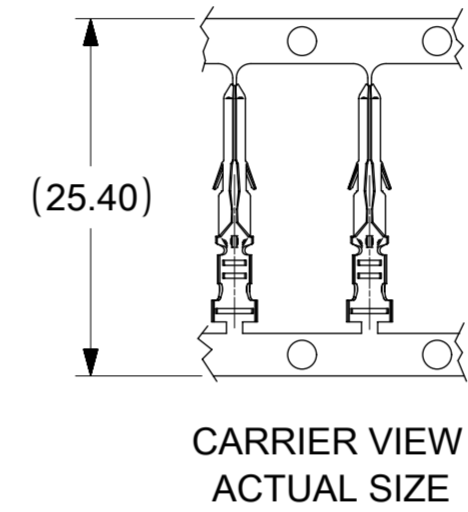
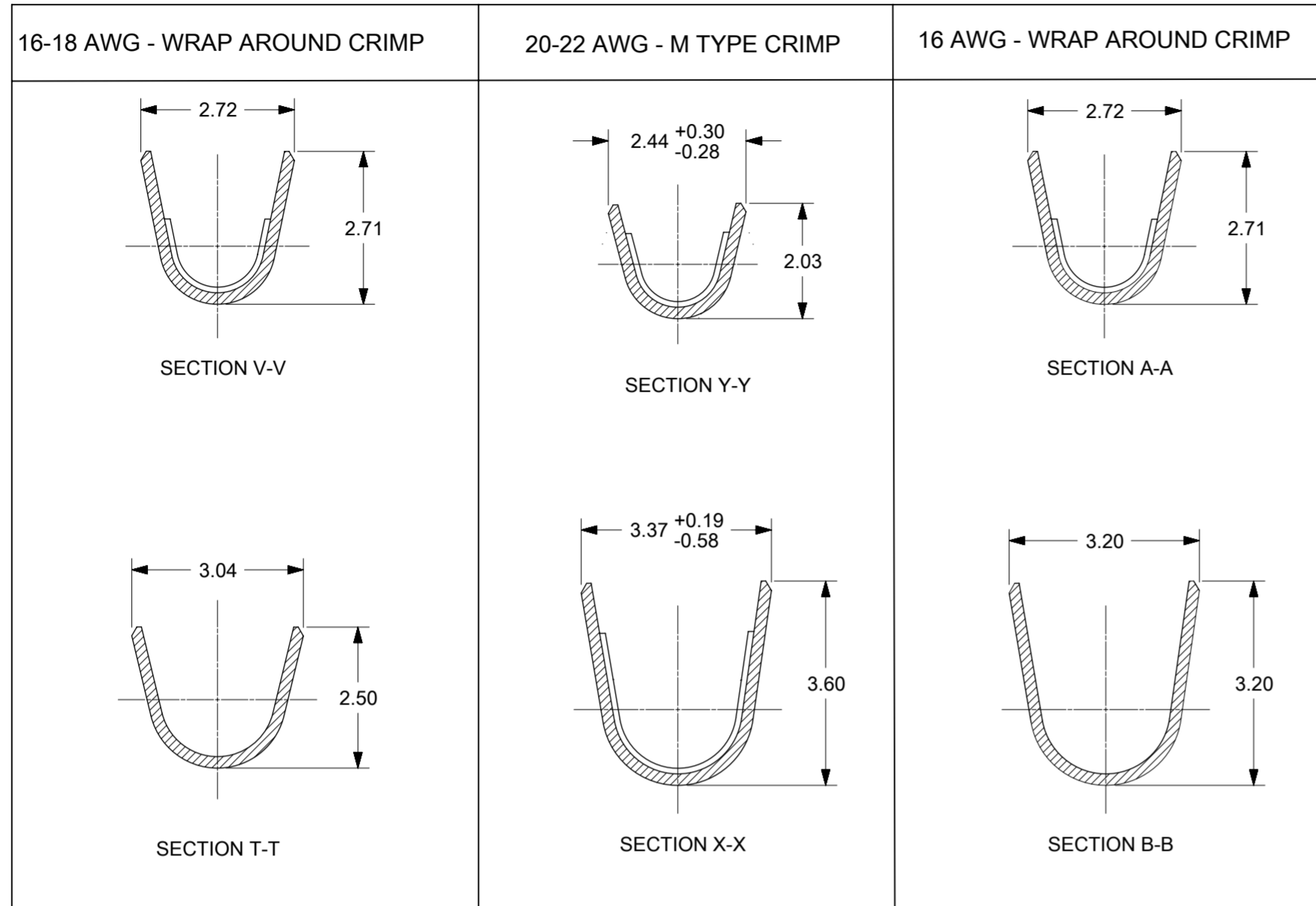


ISOMETRIC VIEW

THIS DRAWING CONTAINS INFORMATION THAT IS PROPRIETARY TO MOLEX ELECTRONIC TECHNOLOGIES, LLC AND SHOULD NOT BE USED WITHOUT WRITTEN PERMISSION

RE-MASTERED IN ELECTRICAL EC NO: 109838 DRWN: ISHWARG CHKD: KPRASAD REV APPR:	2016/10/27	2016/10/27	GENERAL TOLERANCES (UNLESS SPECIFIED)	DIMENSION UNITS	SCALE	
			ANGULAR TOL ± 0.5 °	MM	10:1	
	4 PLACES ±		SS06	DRWN BY	DATE	
	3 PLACES ±				2015/02/27	
2 PLACES ± 0.25			CHK'D BY	DATE	VALUSEAL FEMALE TERMINAL 16-18 & 20-22 AWG	
1 PLACE ± 0.35			APPR BY	DATE		
0 PLACES ±			RHODGE	2015/04/06		
DRAFT WHERE APPLICABLE MUST REMAIN WITHIN DIMENSIONS			DRAWING SIZE	THIRD ANGLE PROJECTION		
C1			A2			PRODUCT CUSTOMER DRAWING SERIES: 173042 MATERIAL NUMBER: SEE TABLE CUSTOMER: GENERAL MARKET DOCUMENT NUMBER: SD-173042-0001 DOC TYPE: PSD DOC PART: 000 SHEET NUMBER: 1 OF 2

CONDUCTOR & INSULATOR CRIMP DIMENSIONS



NOTES:

1. MATERIAL: BRASS
2. FINISHES:
HOT TIN DIP (60μ INCHES MIN).
3. PRODUCT SPECIFICATION: PS-172877-0001
4. PACKAGING SPECIFICATION: PK-173041-0001
5. TERMINAL FOR USE WITH RECEPTACLE HOUSING SERIES 172878
6. THIS PARTS CONFORM TO CLASS 'B' REQUIREMENTS OF COSMETIC SPECIFICATION PS-45499-002.

TABLE:

PART NUMBER	SHEET THICKNESS	CRIMP SIZE	WIRE STYLE	INSULATION DIAMETER (MEAN)
173042-0001	0.203	16 AWG	UL 1061	Ø1.98
		18 AWG	UL 1007	Ø2.03
		18 AWG	UL 1095	Ø1.90
173042-0002	0.203	20 AWG	TBD	-
		22 AWG	TBD	-
173042-0003	0.203	16 AWG	UL 1007	Ø2.39

THIS DRAWING CONTAINS INFORMATION THAT IS PROPRIETARY TO MOLEX ELECTRONIC TECHNOLOGIES, LLC AND SHOULD NOT BE USED WITHOUT WRITTEN PERMISSION												
RE-MASTERED IN ELECTRICAL EC NO: 109838 DRWN: ISHWARG CHKD: KPRASAD REV / APPR:	2016/10/27	2016/10/27	GENERAL TOLERANCES (UNLESS SPECIFIED)	DIMENSION UNITS	SCALE	molex [®]						
			ANGULAR TOL ± 0.5 °	MM	10:1							
			4 PLACES ±	DRWN BY	DATE	VALUSEAL FEMALE TERMINAL 16-18 & 20-22 AWG						
			3 PLACES ±	SS06	2015/02/27							
			2 PLACES ± 0.25	CHK'D BY	DATE	PRODUCT CUSTOMER DRAWING						
			1 PLACE ± 0.35	APPR BY	DATE							
		0 PLACES ±	RHODGE	2015/04/06	SERIES	MATERIAL NUMBER	CUSTOMER					
		DRAFT WHERE APPLICABLE MUST REMAIN WITHIN DIMENSIONS	DRAWING SIZE	THIRD ANGLE PROJECTION	173042	SEE TABLE	GENERAL MARKET					
C1			A2		DOCUMENT NUMBER	SD-173042-0001	DOC TYPE	PSD	DOC PART	000	SHEET NUMBER	2 OF 2