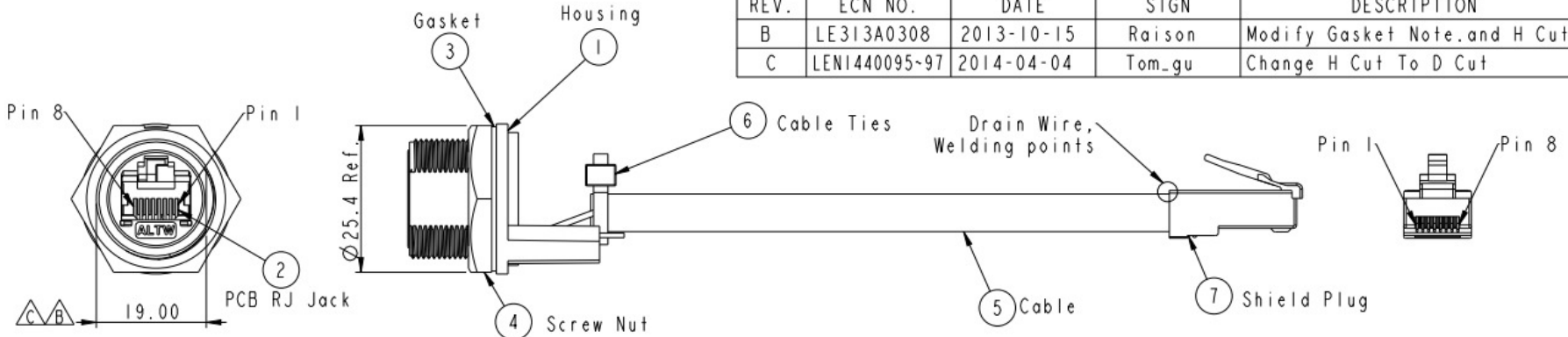
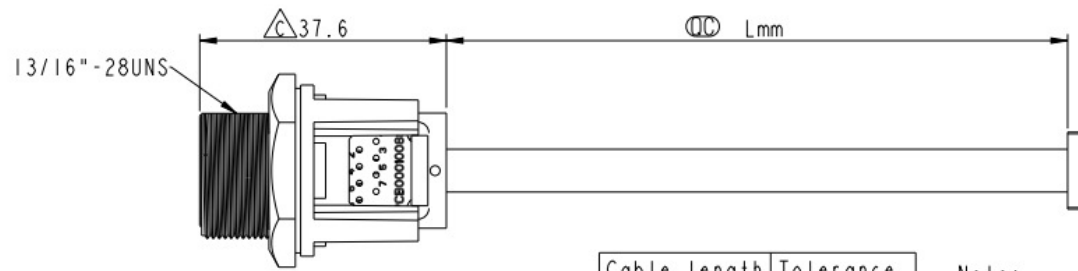


THIS DOCUMENT IS SUBJECT TO CHANGE WITHOUT NOTICE. IT IS CONFIDENTIAL AND A PROPERTY OF Amphenol LTW. DISCLOSURE TO THIRD PARTY HAS TO BE AUTHORIZED BY Amphenol LTW.

REV.	ECN NO.	DATE	SIGN	DESCRIPTION
B	LE313A0308	2013-10-15	Raison	Modify Gasket Note.and H Cut
C	LEN1440095-97	2014-04-04	Tom_gu	Change H Cut To D Cut



Cable Length(L): 100~1000mm
RCP-5SPFFP-SCM7BXX
 XX: 100~1000mm
 10: 100mm
 15: 150mm
 20: 200mm
 I
 95: 950mm
 A0: 1000mm



Cable length	Tolerance
0.0~100 mm	±10 mm
101~300 mm	±15 mm
301~1000 mm	±20 mm

- Note:
- * \varnothing Important Dimension
 - * Waterproof Rate : IP67 Mated
 - * Housing : Nylon+GF,UL 94V-0,BLACK
 - * Screw Nut : Nylon+GF,BLACK
 - * Gasket : Silicone,UL 94V-0,Gray.
 - * PCB: FR-4
 - * Jack : PBT Polyester UL 94V-0
 - * Use without Waterproof cap or Dust cap
For Panel Thickness Max: 4.2mm
 - * Use with Waterproof cap or Dust cap
For Panel Thickness Max: 3.0mm
 - * Screw torsion value range: 8~12kgf-cm

Shield	Drain Wire	接地線	Shield	
8	Brown	棕	8	Twist
7	White/Brown	白/棕	7	
6	Green	綠	6	Twist
5	White/Blue	白/藍	5	
4	Blue	藍	4	Twist
3	White/Green	白/綠	3	
2	Orange	橘	2	Twist
1	White/Orange	白/橘	1	
Jack	Wire Color		Plug	
		Pin Out		

Recommended Panel Cut-out Rear View
 Dimensions: 19.4 ± 0.1, 20.8 ± 0.1



UNIT:mm	\varnothing	∇	TITLE RJ45,C SIZE,MATED WATERPROOF
TOLERANCE .X ±0.25 .XX ±0.1 .XXX ±0.05 ANGLES ±1°	SCALE 1:1	SIZE A4	SHEET 1 OF 1
	REV. C	MC-REV. B.4	\varnothing : Inspection item

Amphenol LTW
 安費諾亮泰企業股份有限公司

ITEM NO	DRAWN BY	DATE
RCP-5SPFFP-SCM7BXX	Tom_gu	2014-04-04
CUSTOMER	CHECKED BY	DATE
ALTW	Tony	2014-04-04
	APPROVED BY	DATE
	Victor	2014-04-04