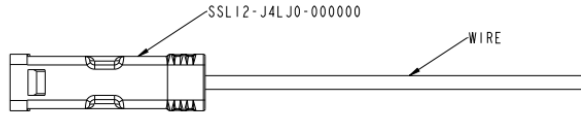
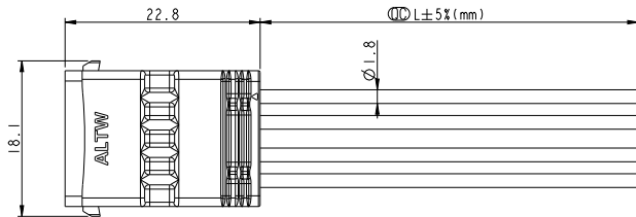
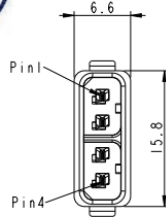


REV.	ECN NO.	DATE	SIGN	DESCRIPTION
A	Initial Release	2015-03-16	Fisher	Initial Release
B	LEN1560330	2015-06-15	Fisher	Change the package



SSL12-J4LJ0-020AXX

- 01: L=100±20mm
- 02: L=200±20mm
- 04: L=400±25mm
- Wire Length Range(L): 100-9900mm
- 20: 20AWG

- Notes:
- \varnothing Important Dimension To Check.
 - Waterproof Rate: IP68(mating)
1M Depth Of Water In 24 Hours.
 - Housing: Thermoplastic, UL94V-0, Natural White.
 - Terminal: Copper Alloy, Gold Plated on contact area.
 - Seals: Silicone, Gray.
 - Wire: UL1430 20AWG.
 - Current Rating : 5A maximum.
 - Voltage Rating: 250V DC/AC maximum.
 - Operating Temperature: -40~+105°C.

4	Yellow	黃
3	Orange	橙
2	Red	紅
1	Brown	棕
Conn.	Wire	
Pin-out		

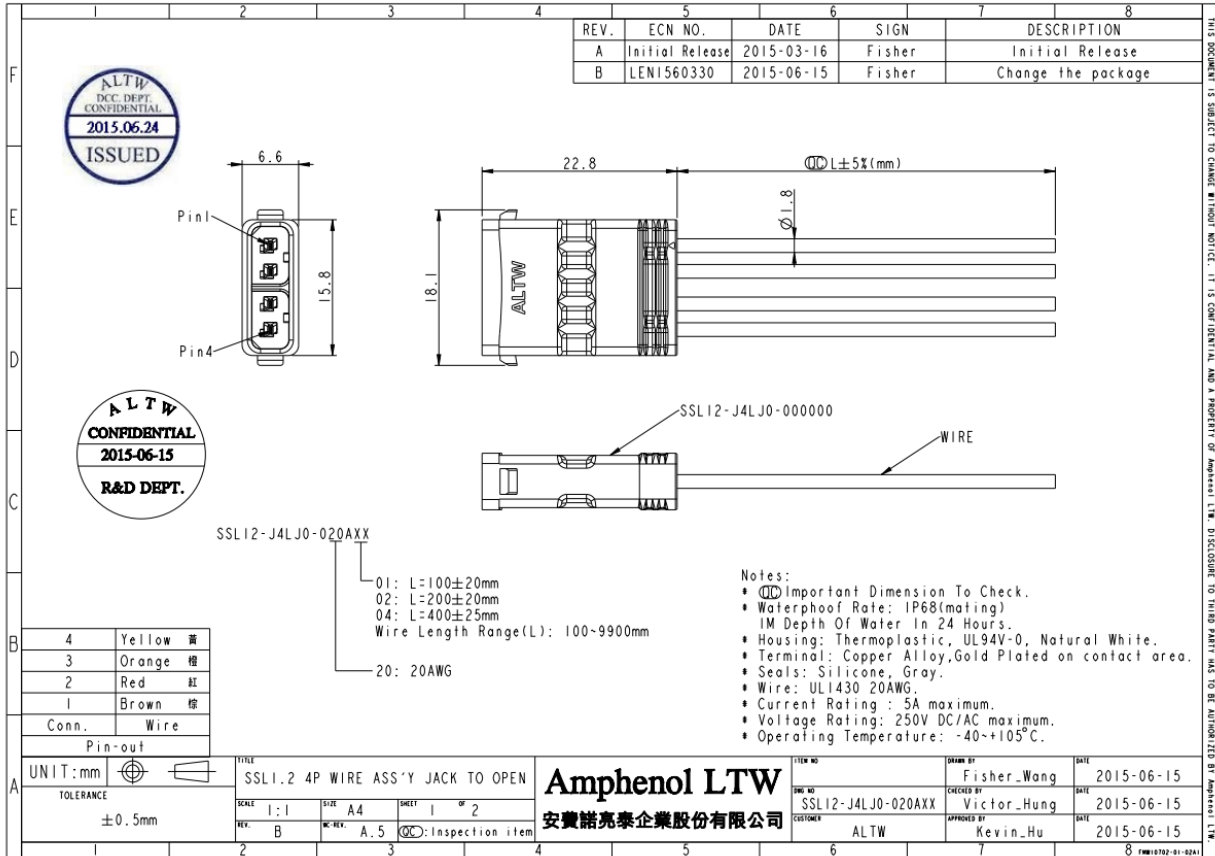
UNIT:mm	
TOLERANCE	±0.5mm

TITLE			
SSL1.2 4P WIRE ASS'Y JACK TO OPEN			
SCALE	1:1	SIZE	A4
REV.	B	REV.	A.5
		\varnothing : Inspection item	

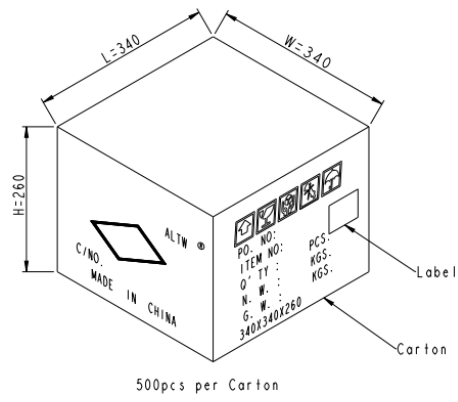
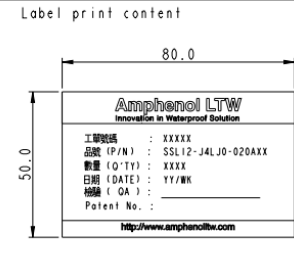
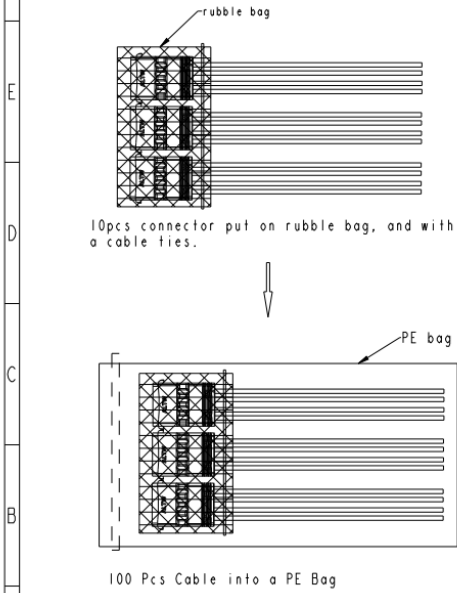
Amphenol LTW
安費諾亮泰企業股份有限公司

DESIGN BY	Fisher_Wang	DATE	2015-06-15
CHECKED BY	Victor_Hung	DATE	2015-06-15
APPROVED BY	Kevin_Hu	DATE	2015-06-15
CUSTOMER	ALTW		

THIS DOCUMENT IS SUBJECT TO CHANGE WITHOUT NOTICE. IT IS CONFIDENTIAL AND A PROPERTY OF AMPHENOL LTW. DISCLOSURE TO THIRD PARTY HAS TO BE AUTHORIZED BY AMPHENOL LTW.



PACKAGE



UNIT: mm		TITLE
TOLERANCE		SSL1.2 4P WIRE ASS'Y PLUG TO OPEN
±0.5mm		SCALE: 1:1 SIZE: A4 SHEET: 2 of 2
		REV: B MC-REV: A.5 KOC: Inspection item

Amphenol LTW
安費諾亮泰企業股份有限公司

ITEM NO.	DESIGN BY	DATE
	Fisher_Wang	2015-06-15
DWG NO.	CHECKED BY	DATE
SSL12-J4LJ0-020AXX	Victor_Hung	2015-06-15
CUSTOMER	APPROVED BY	DATE
ALTW	Kevin_Hu	2015-06-15

THIS DOCUMENT IS SUBJECT TO CHANGE WITHOUT NOTICE. IT IS CONFIDENTIAL AND A PROPERTY OF Amphenol LTW. DISCLOSURE TO THIRD PARTY HAS TO BE AUTHORIZED BY Amphenol LTW.