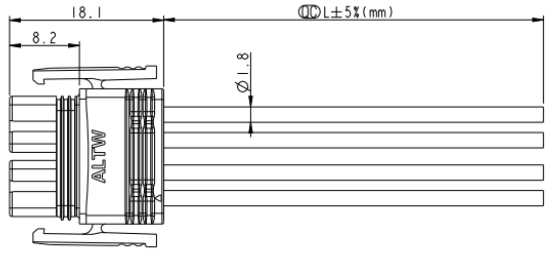
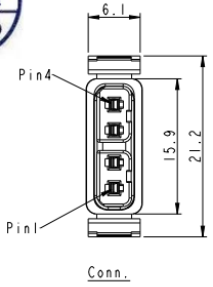
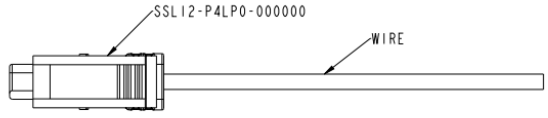


REV.	ECN NO.	DATE	SIGN	DESCRIPTION
A	Initial Release	2015-03-16	Fisher	Initial Release
B	LEN1560331	2015-06-15	Fisher	Change the package

ALTW
DCC. DEPT.
CONFIDENTIAL
2015.06.24
ISSUED



ALTW
CONFIDENTIAL
2015-06-15
R&D DEPT.



SSL12-P4LP0-M20AXX

01: L=100±20mm
02: L=200±20mm
04: L=400±25mm
Wire Length Range(L): 100-9900mm
20: 20AWG

- Notes:
- $\varnothing L$ Important Dimension To Check.
 - Waterproof Rate: IP68(mating).
1M Depth Of Water In 24 Hours.
 - Housing: Thermoplastic, UL94V-0, Natural White.
 - Terminal: Copper Alloy, Gold Plated on contact area.
 - Gasket: Silicone, Gray.
 - Seals: Silicone, Gray.
 - Wire: UL1430 20AWG.
 - Current Rating : 5A maximum.
 - Voltage Rating: 250V DC/AC maximum.
 - Operating Temperature: -40~+105°C.

4	Yellow	黃
3	Orange	橙
2	Red	紅
1	Brown	棕
Conn.	Wire	

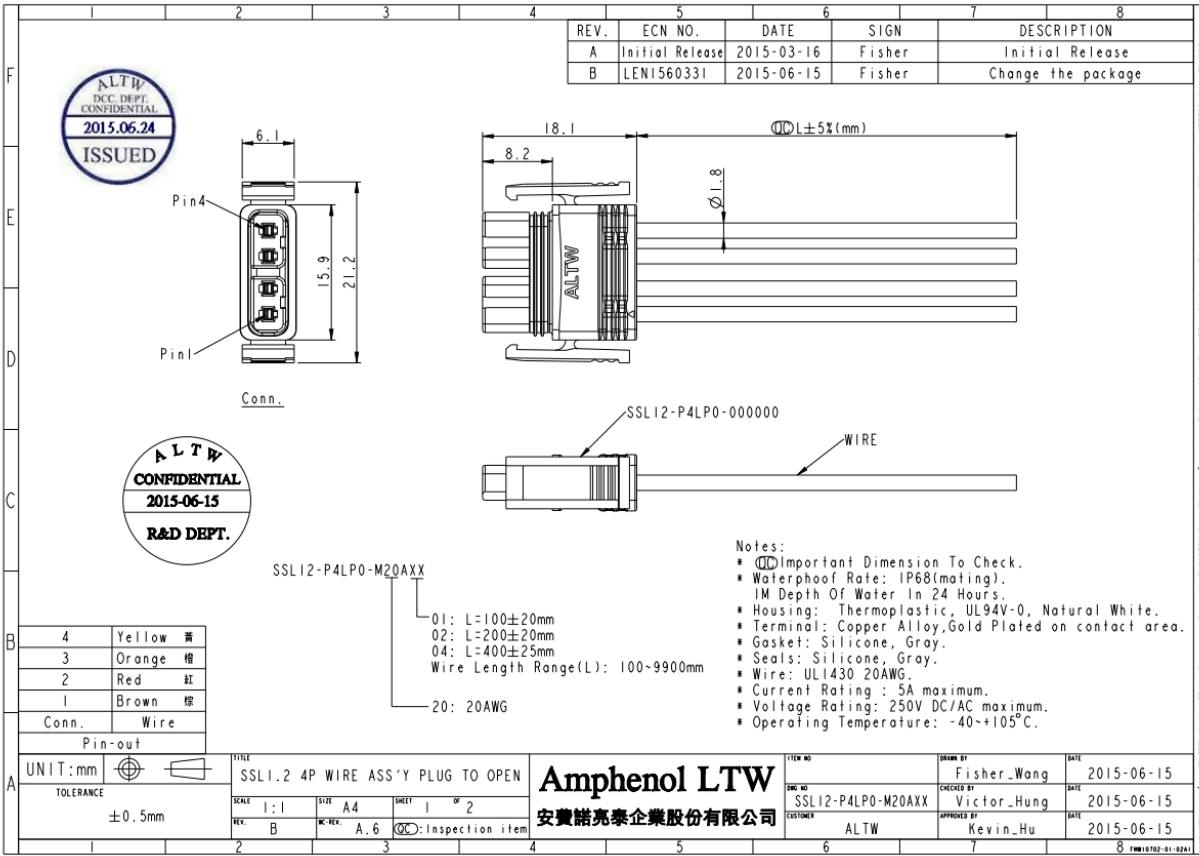
UNIT: mm	TOLERANCE
± 0.5 mm	

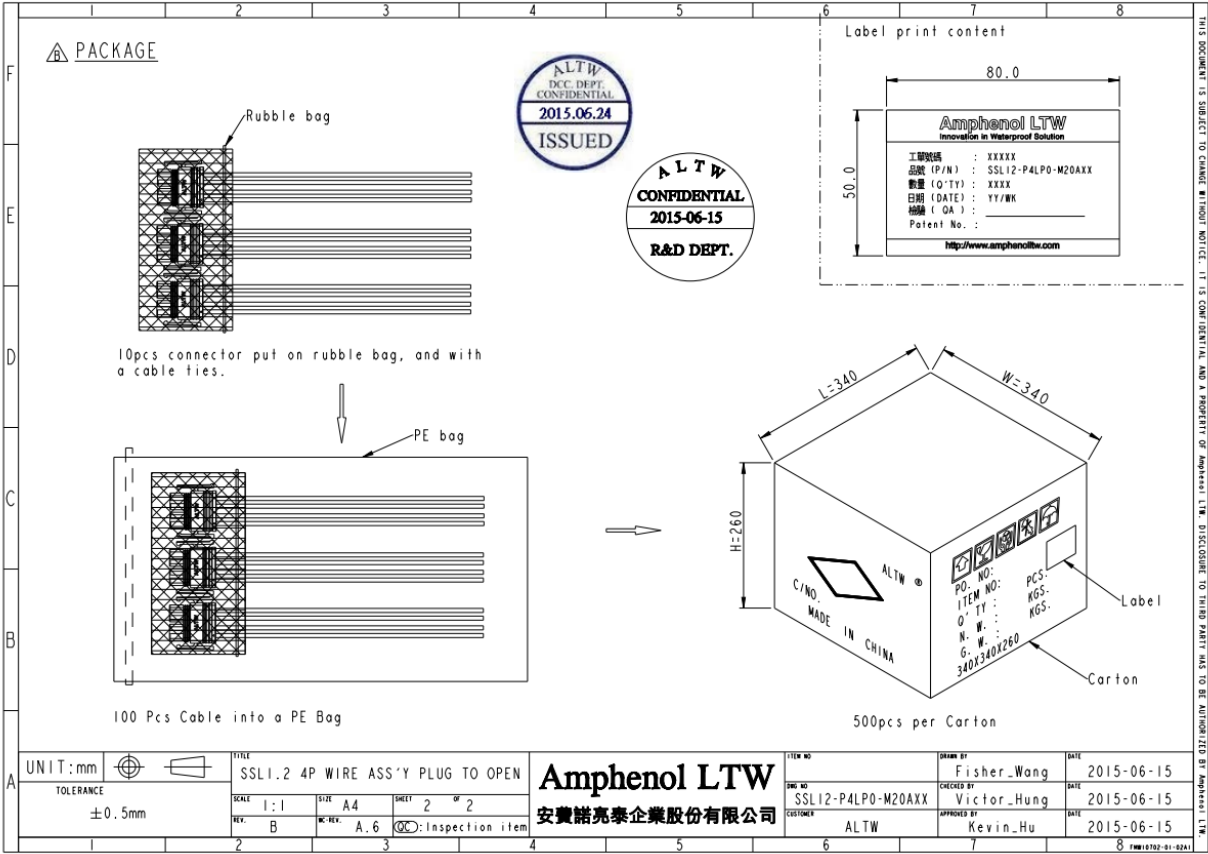
TITLE	SCALE	SIZE	SHEET
SSL1.2 4P WIRE ASS'Y PLUG TO OPEN	1:1	A4	1 of 2
REV. B	REV. A.6	KQC: Inspection item	

Amphenol LTW
安費諾亮泰企業股份有限公司

ITEM NO.	DRAWN BY	DATE
SSL12-P4LP0-M20AXX	Fisher_Wang	2015-06-15
	Victor_Hung	2015-06-15
CUSTOMER	APPROVED BY	DATE
ALTW	Kevin_Hu	2015-06-15

THIS DOCUMENT IS SUBJECT TO CHANGE WITHOUT NOTICE. IT IS CONFIDENTIAL AND A PROPERTY OF AMPHENOL LTW. DISCLOSURE TO THIRD PARTIES HAS TO BE AUTHORIZED BY AMPHENOL LTW.





UNIT: mm		TITLE	SSL1.2 4P WIRE ASS'Y PLUG TO OPEN		
TOLERANCE	±0.5mm	SCALE	1:1	SIZE	A4
		REV.	B	REV.	A.6
					QC: Inspection item

Amphenol LTW
安費諾亮泰企業股份有限公司

ITEM NO.	DESIGN BY	DATE
SSL12-P4LP0-M20AXX	Fisher_Wang	2015-06-15
CHECKED BY	DATE	
Victor_Hung	2015-06-15	
CUSTOMER	APPROVED BY	DATE
ALTW	Kevin_Hu	2015-06-15

THIS DOCUMENT IS SUBJECT TO CHANGE WITHOUT NOTICE. IT IS CONFIDENTIAL AND A PROPERTY OF AMPHENOL LTW. DISCLOSURE TO THIRD PARTY HAS TO BE AUTHORIZED BY AMPHENOL LTW.