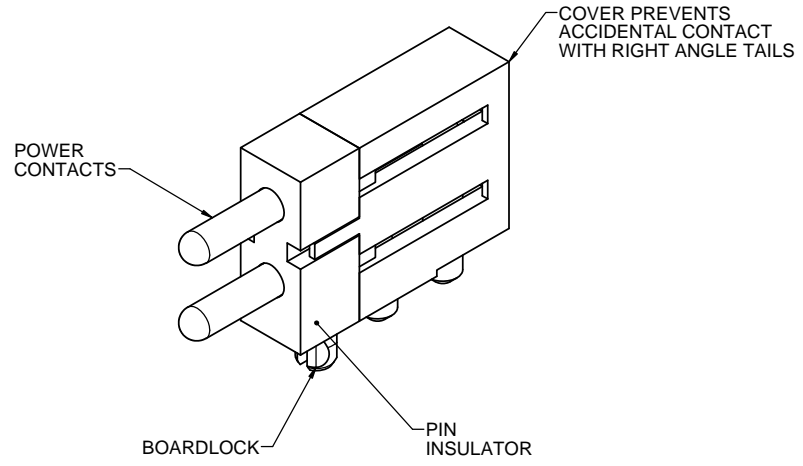
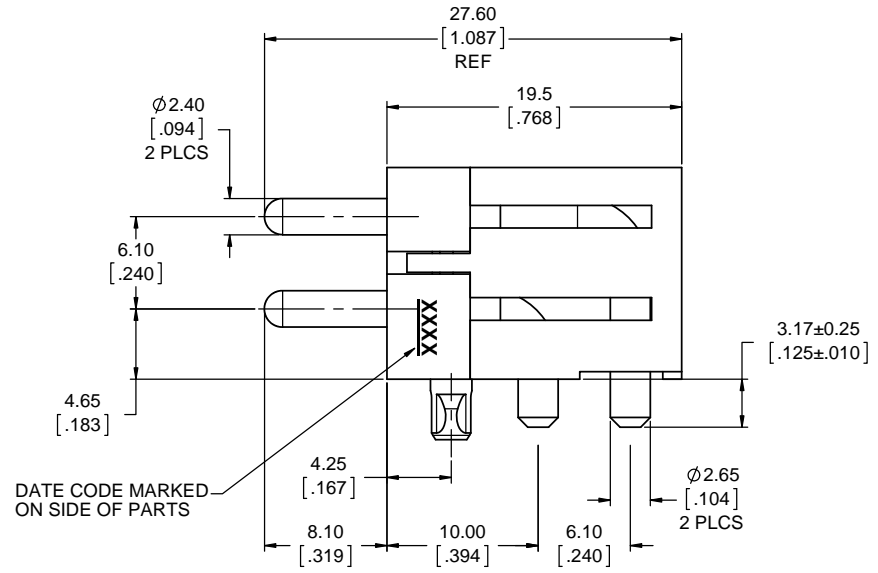
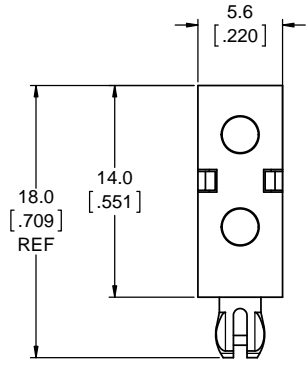


REVISIONS			
REV	DESCRIPTION, ECN, EAR NO.	DATE	APP'D
E	PROPOSAL DRAWING	JUN07/13	S.M.
F	PROPOSAL DRAWING	JUN25/13	A.G.
G	ADJUSTED SOCKET TAIL POSITION	SEP09/13	S.M.



DATE CODE MARKED ON SIDE OF PARTS

**NOTES:**

- MATERIALS: ALL MATERIALS ARE RoHS COMPLIANT PER EU DIRECTIVE 2011/65/EU AND AMENDMENTS.
  - HOUSING: HIGH TEMPERATURE GLASS FILLED NYLON, UL FLAMMABILITY RATING 94V-0, COLOUR BLACK
  - POWER CONTACTS: COPPER ALLOY PLATED WITH 5.08µm (200µ") SILVER OVER 1.27µm (50µ") MIN NICKEL. DRY LUBRICANT APPLIED TO CONTACT SURFACE AFTER PLATING.
- ELECTRICAL CHARACTERISTICS:
  - CURRENT RATING: 35A PER CONTACT
  - OPERATING TEMPERATURE: -55°C TO +105°C
  - DIELECTRIC WITHSTANDING VOLTAGE: 1500VDC
  - INSULATION RESISTANCE: 5000 MEGOHMS



UNLESS SPECIFIED OTHERWISE	DRAWN	A.ESPIE	MAY08/13
PRIMARY UNITS MILLIMETERS	CHECKED	S.MUGAN	MAY08/13
SECONDARY UNITS INCHES	M.E. APP'D		
REFERENCE IN PARENTHESES	Q.A. APP'D		
GENERAL TOLERANCES	DWG APPR.		
1 DECIMAL PLACE ±0.25	ENG. REL. NO.		
2 DECIMAL PLACES ±0.10	REF.		
3 DECIMAL PLACES	THIRD ANGLE PROJECTION		
ANGULAR DEGREES	DO NOT SCALE DRAWING		

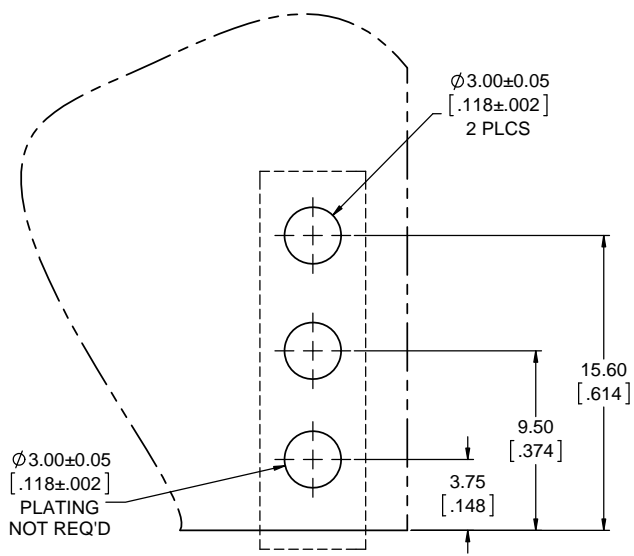
**Amphenol Canada Corp.**  
www.amphenolcanada.com

**DWR SERIES SLIM DRAWER, 2 POWER COMPACT PIN CONNECTOR, 2.4mm RADSOK, PCB TAIL TERMINATION, RoHS COMPLIANT**

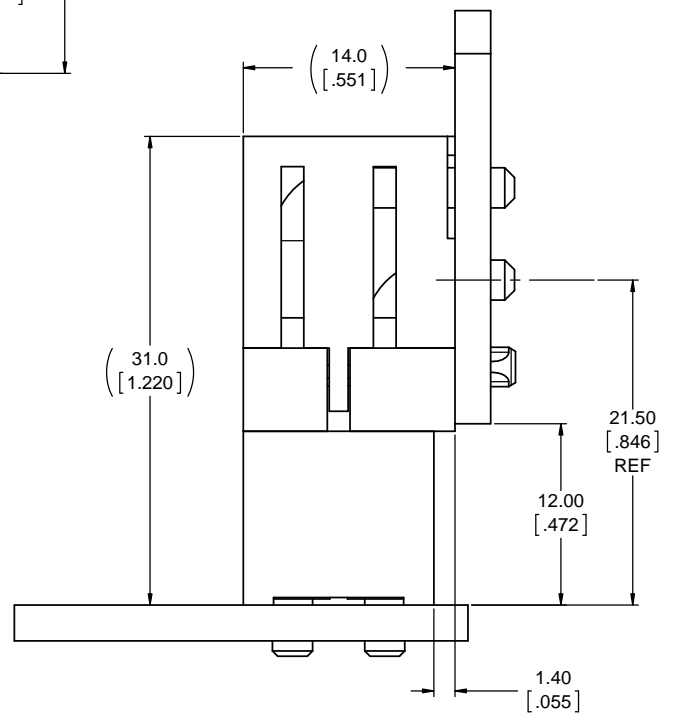
DWG. NO. **P-DWR-P1P-BQ200-1A6** REV **G**

CODE ID NO. 03554 DWG SIZE: X SCALE: 4:1 SHEET 1 OF 2

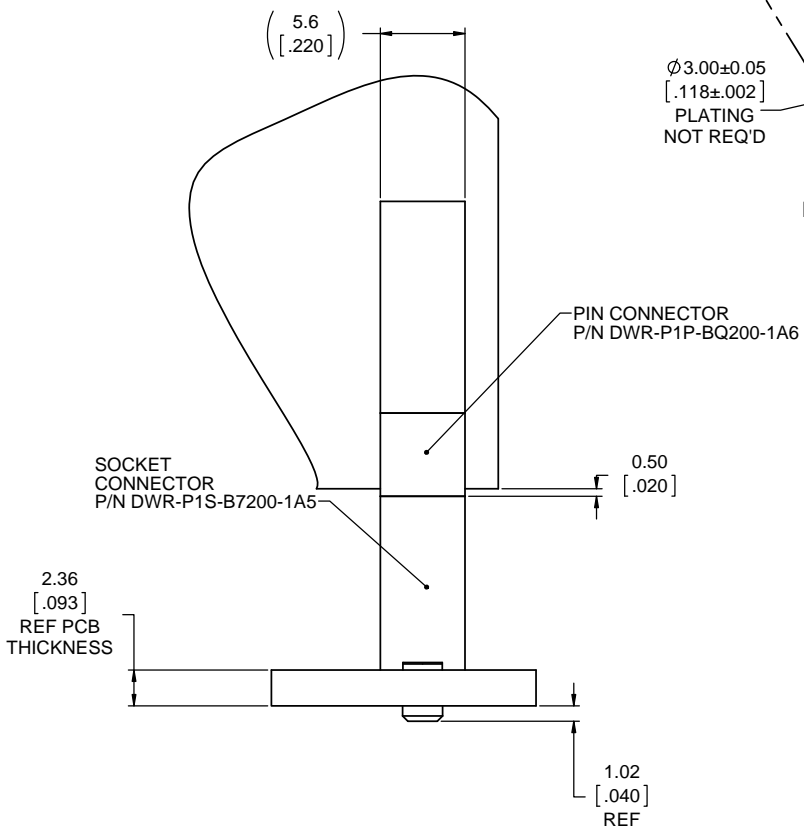
REVISIONS			
REV	DESCRIPTION, ECN, EAR NO.	DATE	APP'D
E	PROPOSAL DRAWING	JUN07/13	S.M.
F	PROPOSAL DRAWING	JUN25/13	A.G.
G	ADJUSTED SOCKET TAIL POSITION	SEP09/13	S.M.



**RECOMMENDED PCB LAYOUT**  
(COMPONENT SIDE OF BOARD)  
SCALE 5:1



**MATED ASSEMBLY**



UNLESS SPECIFIED OTHERWISE	DRAWN	A.ESPIE	MAY08/13
PRIMARY UNITS MILLIMETERS	CHECKED	S.MUGAN	MAY08/13
SECONDARY INCHES	M.E. APP'D		
REFERENCE IN PARENTHESES	Q.A. APP'D		
GENERAL TOLERANCES	DWG APPR.		
1 DECIMAL PLACE	ENG. REL. NO.		
2 DECIMAL PLACES ±0.20	REF.		
3 DECIMAL PLACES	THIRD ANGLE PROJECTION		
ANGULAR DEGREES	DO NOT SCALE DRAWING		

**Amphenol Canada Corp.**  
www.amphenolcanada.com

**DWR SERIES SLIM DRAWER, 2 POWER COMPACT PIN CONNECTOR, 2.4mm RADSOK, PCB TAIL TERMINATION, RoHS COMPLIANT**

DWG. NO. **P-DWR-P1P-BQ200-1A6** REV **G**

CODE ID NO. 03554 DWG SIZE: X SCALE: 4:1 SHEET 2 OF 2