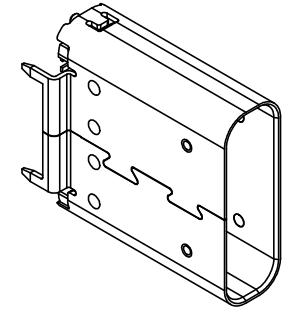
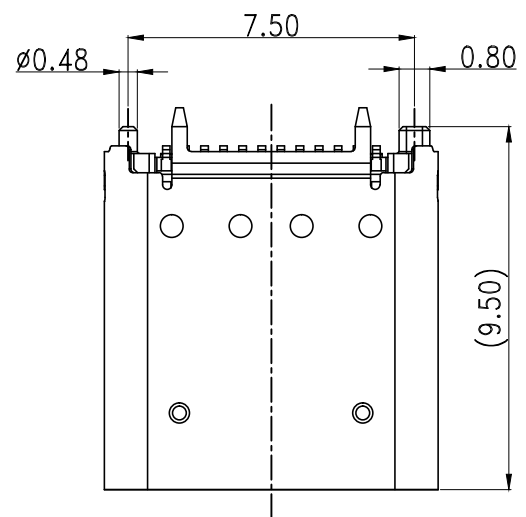


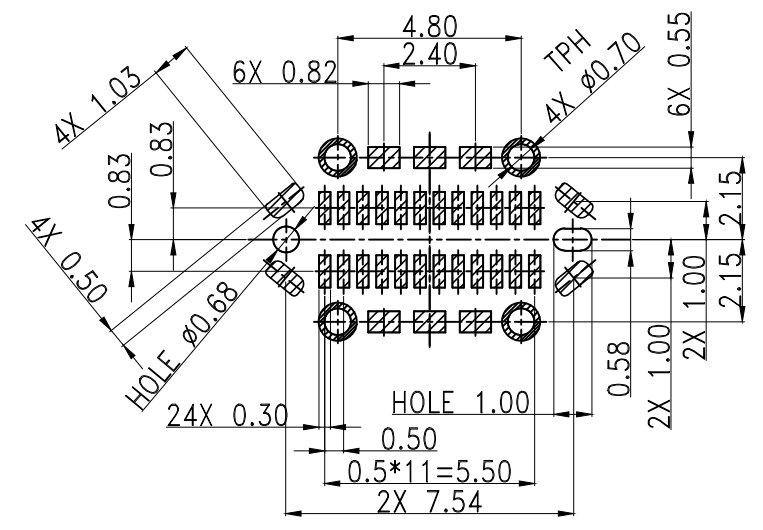
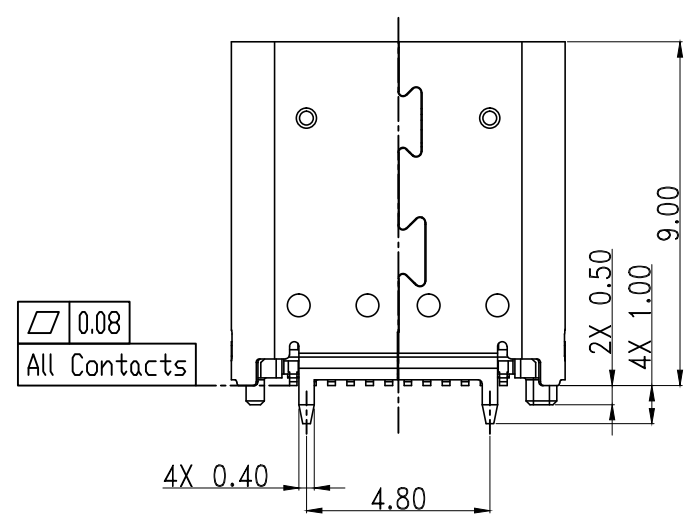
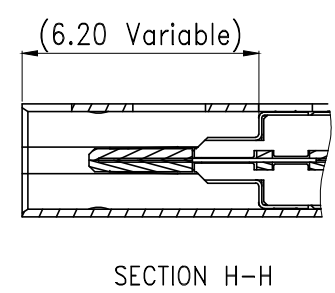
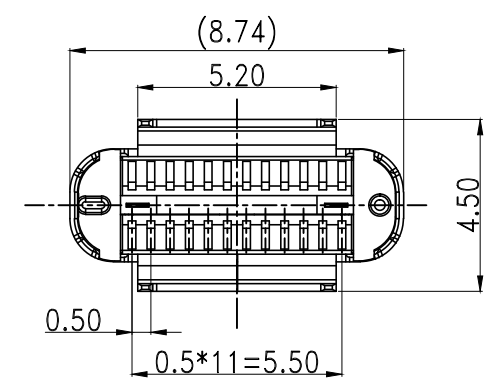
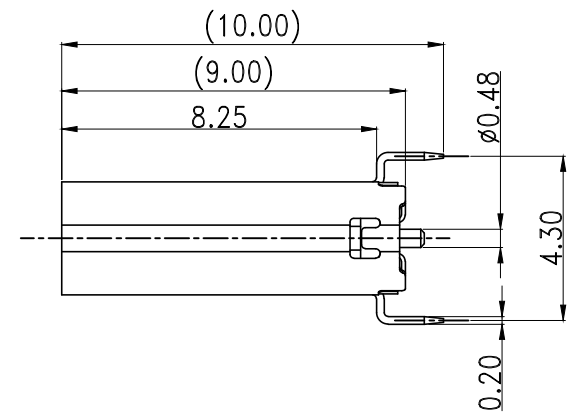
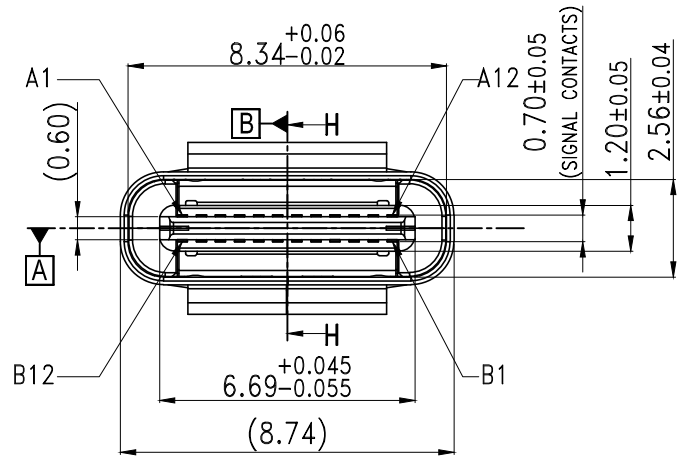
This document is the property of Amphenol Corporation and is delivered on the express condition that it is not to be disclosed, reproduced or used, in whole or in part, for manufacture or sale by anyone other than Amphenol Corporation without its prior consent, & that no right is granted to disclose or to use any information in this document.

REFERENCE DRAWING

| REVISIONS | | | | |
|-----------|----------|-------------------|----------|----------|
| SYM | ECN | DESCRIPTION | DATE | APPROVED |
| X1 | 1509**** | NEW RELEASE | 09/01/15 | Tom |
| X2 | 1604**** | MODIFY THE LENGHT | 04/22/16 | Tom |



| Pin No | Signal Name | Mating Sequence | Pin No | Signal Name | Mating Sequence |
|--------|-------------|-----------------|--------|-------------|-----------------|
| A1 | GND | First | B12 | GND | First |
| A2 | TX1+ | Second | B11 | RX1+ | Second |
| A3 | TX1- | Second | B10 | RX1- | Second |
| A4 | Vbus | First | B9 | Vbus | First |
| A5 | CC1 | Second | B8 | SBU2 | Second |
| A6 | D+ | Second | B7 | D- | Second |
| A7 | D- | Second | B6 | D+ | Second |
| A8 | SBU1 | Second | B5 | CC2 | Second |
| A9 | Vbus | First | B4 | Vbus | First |
| A10 | RX2- | Second | B3 | TX2- | Second |
| A11 | RX2+ | Second | B2 | TX2+ | Second |
| A12 | GND | First | B1 | GND | First |
| SHELL | GND | | SHELL | GND | |



RECOMMENDED PCB LAYOUT
(Tolerance=±0.05)

- Notes:
- Material :
Contacts : copper alloy
Shell : Stainless steel.
Housing : High-temperature polymer UL94V-0, black.
 - Plating :
Contacts: contact area 30u" Au, Solder tail gold flash or matte tin, nickel overall.
Shell : Nickel Plating
 - Coplanarity : 0.08Max.
 - P/N : 12401661E4#2A.
 - Packaging type: carrier tape.
 - Material should be fulfilled Amphenol spec# SSN002 AND Customer Requirements, for halogen free products, also need to meet SSN004

| | | | |
|--|---------------------|---------------------------|--|
| UNLESS OTHERWISE SPECIFIED TOLERANCES U.S. METRIC .X +/- / ±0.30 .XX +/- / ±0.25 .XXX +/- / ±0.20 FRACTIONS +/- ANGLES +/- | APPROVAL | DATE | <h2>Amphenol</h2> |
| | DRAWN Michael.qin | 04/22/16 | |
| FOR MATERIALS AND FINISHES SEE NOTES | CHECKED Welson.Lu | 04/22/16 | <h3>USB TYPE C CONNECTOR VERTICAL</h3> |
| REMOVE SHARP EDGES | DRAWING FILE : | | |
| DIMENSIONS | ANGLE OF PROJECTION | | TITLE |
| U.S. INCHES | | | SIZE |
| (METRIC) (MM) | | | A3 |
| | | DRAWING NO. 12401661E4#2A | |
| | | REV. X2 | |
| | | SCALE NONE | SHEET 1 OF 1 |