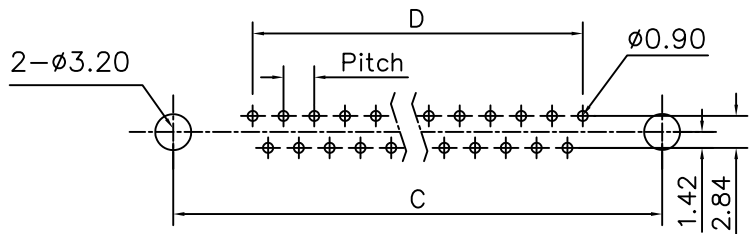
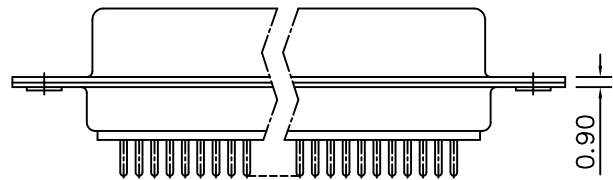
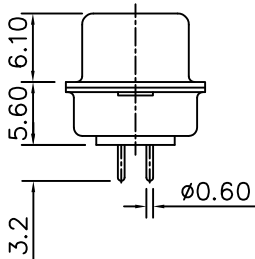
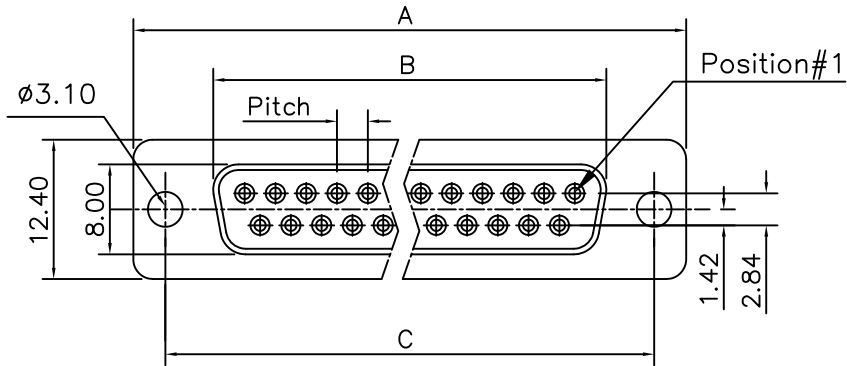


This document is the property of Amphenol Corporation and is delivered on the express condition that it is not to be disclosed, reproduced or used, in whole or in part, for manufacture or sale by anyone other than Amphenol Corporation without its prior consent, & that no right is granted to disclose or to use any information in this document.



RECOMMENDED P.C.B LAYOUT
(TOLERANCE +/-0.03)

Customer drawing

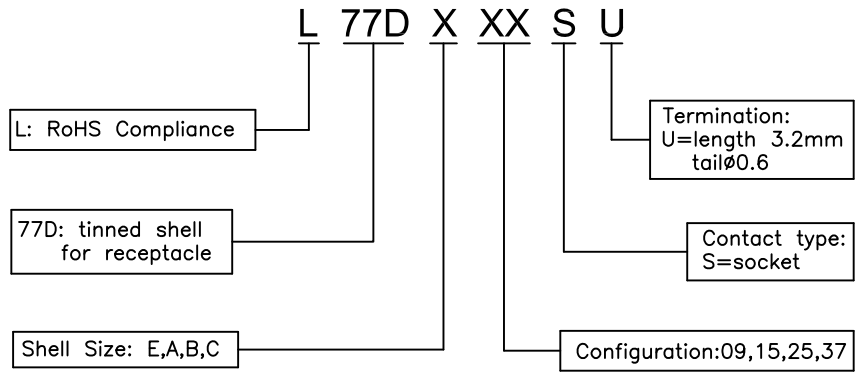
DIM.S SHELL	A	B	C	D	Pitch
9	30.70	16.40	25.00	10.96	2.74
15	39.00	24.80	33.30	19.18	2.74
25	52.90	38.50	47.00	33.12	2.77
37	69.20	54.90	63.50	49.68	2.77

REVISIONS				
SYM	ECN	DESCRIPTION	DATE	APPROVED
1	HK--	First Release Drawing	06/01/09	IP

D-SUB TECHNICAL DATA

SHELL : Steel, 2.5um (100u") min tin over 1.25um (50u") min nickel
 BODY : Glass filled thermoplastic.
 Flame retardant to UL94 V-0 Color Black
 CONTACTS : Brass.
 0.1um (4u") min gold over 1.25um (50u") min nickel
 ELECTRICAL : Voltage rating : 300 V RMS at 50 Hz
 Current rating : 7.5A
 Insulation resistance >5000 M Ohms
 Contact resistance 20 mOhms max.
 CLIMATIC : Temperature range -55 °C up to 85°C
 Damp heat 21 days(40 °C-95% HR)
 MARKING : Amphenol-...(Series No.)
 Commercial reference
 Manufacturing date

PRODUCT CODE



UNLESS OTHERWISE SPECIFIED TOLERANCES		APPROVAL	DATE
U.S.	METRIC	DRAWN	DATE
.X +/-	0.50	Christina.ou	06/01/09
.XX +/-	0.30	CHECKED	06/01/09
.XXX +/-	0.20	CHECKED	
FRACTIONS +/-	2'		
ANGLES +/-			
FOR MATERIALS AND FINISHES SEE NOTES		DRAWING FILE :	
REMOVE SHARP EDGES		ANGLE OF PROJECTION	
DIMENSIONS			
U.S.	INCHES		
METRIC	MM		

Amphenol	
Amphenol East Asia Limited	
TITLE Machined contacts connector, D series	
SIZE	DRAWING NO.
A4	C L77DXXXXSU
SCALE	NONE
SHEET	1 OF 1
REV.	1