

**DESIGNED AND DIMENSIONED
IN MILLIMETERS [INCHES]**

ERM8-XXX-XX.X-X-DV-XXXX-XX

No OF POSITIONS (PER ROW)
 -005, -010, -011, -013, -020, -025, -030,
 -035, -040, -049, -050, -060, -070, -075, -100
 (-100 AVAILABLE ON -09.0 LEAD STYLE ONLY
 SEE NOTE 8)

LEAD STYLE
 -02.0 = 2mm
 -05.0 = 5mm
 -08.0 = 8mm
 -09.0 = 9mm

PLATING SPECIFICATION
 -L: 10µ" LIGHT SELECTIVE GOLD
 IN CONTACT AREA,
 MATTE TIN ON TAIL
 -S: 30µ" SELECTIVE GOLD
 IN CONTACT AREA,
 MATTE TIN ON TAIL

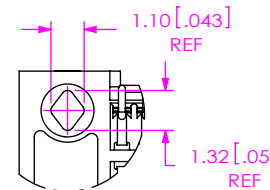
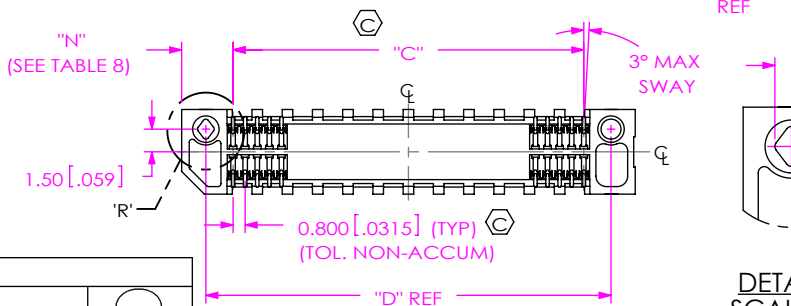
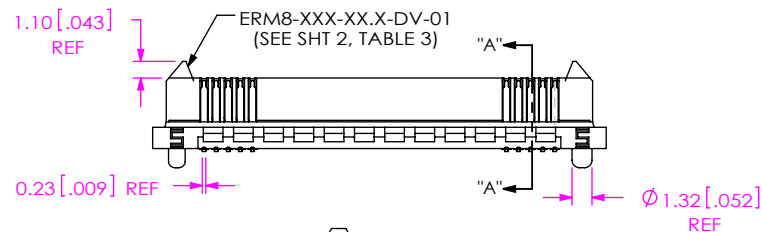
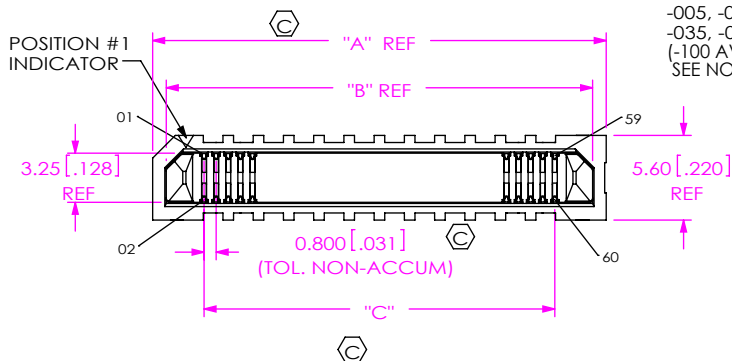
ROW SPECIFICATION
 -DV: DOUBLE VERTICAL

** = NOT RELEASED FOR PRODUCTION

PACKAGING
 -TR: TAPE & REEL (SEE NOTES 4 & 7)
 -TY: TRAY (SEE NOTE 7)

OPTIONS
 -K: POLYIMIDE FILM PAD (SEE FIG 2, SHT 3)
 (USE K-DOT-.157-.250-.005)
 -DS: DIFFERENTIAL PAIR (HOT SWAP) (SEE FIG 3, SHT 2)
 (AVAILABLE ONLY ON -05.0 LEAD STYLE)
 (SEE TABLE 4 FOR POSITION AVAILABILITY)
 -L : LATCHES (SEE FIG 4, SHT 3)
 (AVAILABLE ONLY ON -05.0)
 (SEE TABLE FOR AVAILABILITY) (SEE TABLE 3, SHT 2)
 (NOT AVAILABLE WITH -EGP & -EGPS
 OPTIONS)
 -EGP: EXTENDED GUIDE POSTS (SEE FIG 5, SHT 3)
 (AVAILABLE ONLY ON -05.0 LEAD STYLE)
 (NOT AVAILABLE WITH -L OPTION)
 -EGPS: EXTENDED GUIDE POST SHIELD
 (AVAILABLE ON -05.0 & **09.0 LEAD STYLE,
 -010, -020, -025, & -030 POS ONLY)
 (NOT AVAILABLE WITH -L OPTION)
 -DSP: -DS OPTION WITH -EGP: (-13 & -25 POS ONLY)
 -DSS: -DS OPTION WITH -EGPS: (10 & 25 POS ONLY)

DO NOT
SCALE FROM
THIS PRINT



NOTES:

1. Ⓢ REPRESENTS A CRITICAL DIMENSION.
2. BURR ALLOWANCE: 0.038[.0015] MAX.
3. MINIMUM PUSHOUT FORCE: TERMINAL 2.22 N [.5 LB.], WELD TAB 4.45 N [1 LB.]
4. FOR QUANTITY UP TO 49 PIECES, NO LEADER, TRAILER, OR EIA-481-D REEL WILL BE SUPPLIED. FOR QUANTITY OF 50-124 PIECES, NO LEADER OR TRAILER WILL BE SUPPLIED.
5. "F" DIMENSION DOES NOT APPLY TO -EGP & -EGPS OPTION, SEE FIG. 5 & 6.
6. NOTE DELETED.
7. -TR PACKAGING NOT AVAILABLE ON THE 100 POSITION; -TY PACKAGING ONLY AVAILABLE ON -100 POSITION.
8. NOT AVAILABLE WITH -L, -EGP & -EGPS OPTIONS.

No. OF POS.	
-005, -010, -011, -013, -020, -025, -030, -035	0.10 [.004]
-040, -049, -050, -060	0.12 [.005]
-070, -075, -100	0.15 [.006]

FIG 1
 (ERM8-030-02.0-X-DV-XX SHOWN)
 (SOME CENTER FEATURES REMOVED FOR CLARITY)

ERM8 LEAD STYLE	STACK HEIGHT		
	ERF8 LEAD STYLE		
	-05.0	-07.0	***-10.0
-02.0	7.0MM	9.0MM	12.0MM
-05.0	10.0MM	12.0MM	15.0MM
-08.0	13.0MM	15.0MM	18.0MM
-09.0	14.0MM	16.0MM	19.0MM

(*** = NOT TOOLED)

OPTION	"N"
NONE	3.40 [.134]
-L, -EGP	4.90 [.193]

POSITION	"A"	"B"	"C"	"D"	"H"
-005	10.00 [.394]	8.20 [.323]	3.200 [.1260]	6.80 [.268]	3.00 [.128]
-010	14.00 [.551]	12.20 [.480]	7.200 [.2835]	10.80 [.425]	5.00 [.197]
-011	14.80 [.583]	13.00 [.512]	8.000 [.3150]	11.60 [.457]	5.40 [.212]
-013	16.40 [.646]	14.60 [.575]	9.600 [.3780]	13.20 [.520]	6.20 [.244]
-020	22.00 [.866]	20.20 [.795]	15.200 [.5984]	18.80 [.740]	9.00 [.354]
-025	26.00 [1.024]	24.20 [.953]	19.200 [.7559]	22.80 [.898]	11.00 [.433]
-030	30.00 [1.181]	28.20 [1.110]	23.200 [.9134]	26.80 [1.055]	13.00 [.512]
-035	34.00 [1.339]	32.20 [1.268]	27.200 [1.0709]	30.80 [1.213]	15.00 [.590]
-040	38.00 [1.496]	36.20 [1.425]	31.200 [1.2283]	34.80 [1.370]	17.00 [.669]
-049	45.20 [1.780]	43.40 [1.709]	38.400 [1.5118]	42.00 [1.654]	20.60 [.811]
-050	46.00 [1.811]	44.20 [1.740]	39.20 [1.543]	42.80 [1.685]	21.00 [.827]
-060	54.00 [2.126]	52.20 [2.055]	47.20 [1.858]	50.80 [2.000]	25.00 [.984]
-070	62.00 [2.441]	60.20 [2.370]	55.20 [2.173]	58.80 [2.315]	29.00 [1.142]
-075	66.00 [2.598]	64.20 [2.528]	59.20 [2.331]	62.80 [2.472]	31.00 [1.220]
-100	86.00 [3.386]	84.20 [3.315]	79.20 [3.118]	82.80 [3.260]	41.00 [1.614]

HEIGHT	"E"	"F"	"G"	"U"
-02.0	1.605 [.0632]	5.965 [.2348]	5.04 [.198]	6.765 [.2663]
-05.0	4.605 [.1813]	8.905 [.3506]	7.98 [.314]	9.765 [.3844]
-08.0	7.605 [.2994]	11.905 [.4687]	10.98 [.432]	12.765 [.5026]
-09.0	8.605 [.3411]	12.905 [.5081]	11.98 [.472]	13.765 [.5419]

UNLESS OTHERWISE SPECIFIED,
 DIMENSIONS ARE IN
 MILLIMETERS [INCHES].
 TOLERANCES ARE:
 DECIMALS ANGLES
 X.X: ±0.3 [.01] 2°
 X.XX: ±0.13 [.005]
 X.XXX: ±0.050 [.0020]

PROPRIETARY NOTE
 THIS DOCUMENT CONTAINS CONFIDENTIAL AND
 PROPRIETARY INFORMATION AND ALL DESIGN,
 MANUFACTURING, REPRODUCTION, USE, PATENT RIGHTS
 AND SALES RIGHTS ARE EXPRESSLY RESERVED BY SAMTEC,
 INC. THIS DOCUMENT SHALL NOT BE DISCLOSED, IN WHOLE
 OR PART, TO ANY UNAUTHORIZED PERSON OR ENTITY NOR
 REPRODUCED, TRANSFERRED OR INCORPORATED IN ANY
 OTHER PROJECT IN ANY MANNER WITHOUT THE EXPRESS
 WRITTEN CONSENT OF SAMTEC, INC.

MATERIAL: DO NOT SCALE DRAWING SHEET SCALE: 2:1
 INSULATOR: LCP, COLOR: BLACK
 TERMINAL: PHOS BRONZE
 LATCH: BeCu
 SHIELD: PHOS BRONZE

F:\DWG\MISC\MKTG\ERM8-XXX-XX.X-X-DV-XXXX-XX-MKT.SLDDRW

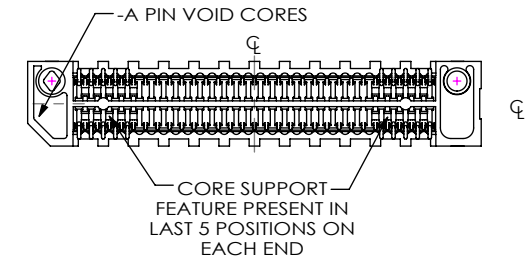
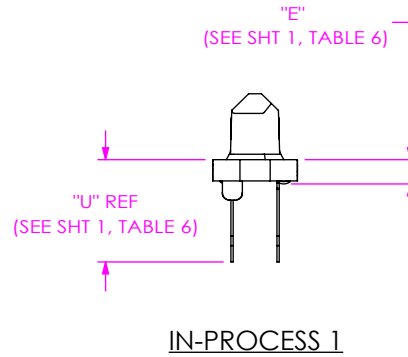
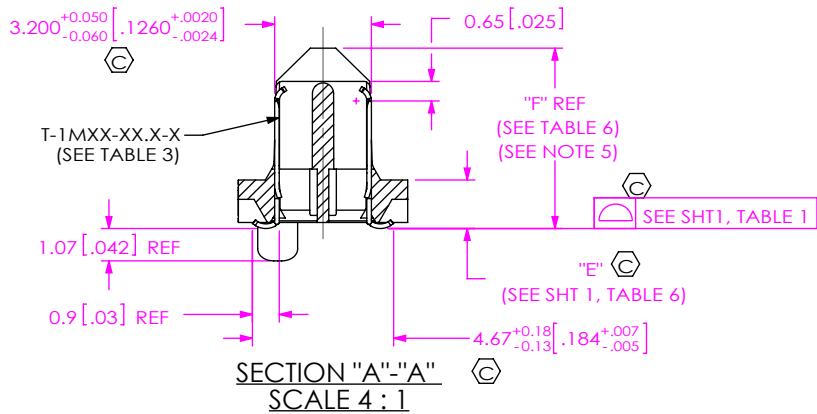


520 PARK EAST BLVD, NEW ALBANY, IN 47150
 PHONE: 812-944-6733 FAX: 812-948-5047
 e-Mail: info@SAMTEC.com code 55322

DESCRIPTION:
 0.8MM EDGE RATE TERMINAL ASSEMBLY

DWG. NO.
ERM8-XXX-XX.X-X-DV-XXXX-XX

BY: KNOWLDEN 9/27/2005 SHEET 1 OF 5



BOTTOM VIEW
(ERM8-030-09.0-X-DV-XX SHOWN)
(DIFFERENT AS SHOWN, OTHERWISE SAME AS FIG 1)

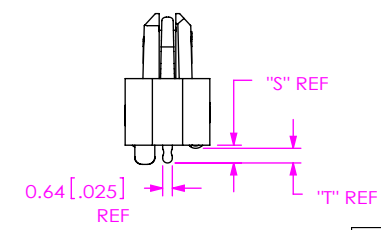
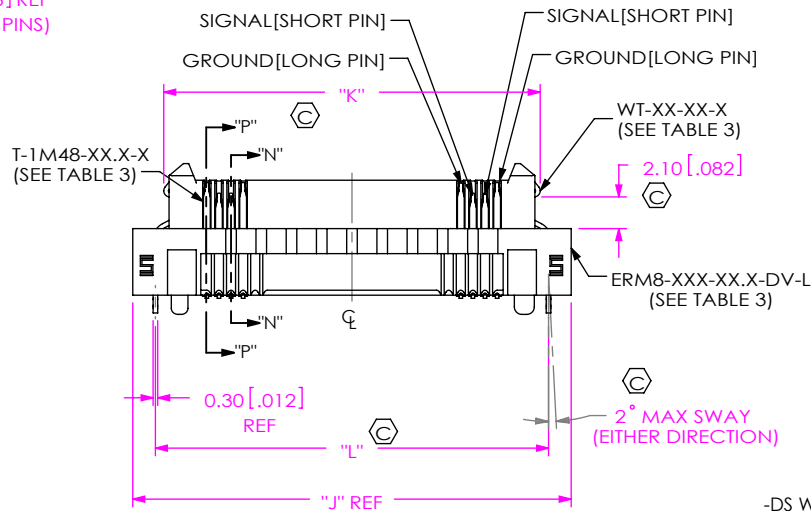
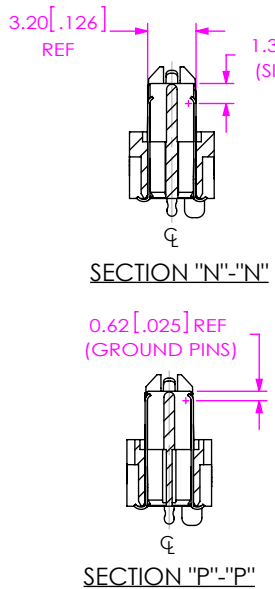


FIG 3
-DS WITH -L OPTION
(-DS AVAILABLE ON -05.0 LEADSTYLE ONLY)
(-L AVAILABLE ON -05.0 LEAD STYLE ONLY)
(ERM8-025-05.0-X-DV-DS-L SHOWN)
(SAME AS FIG 1, EXCEPT AS SHOWN)
(SOME CENTER FEATURES REMOVED FOR CLARITY)

TABLE 4	
-DS & -L OPTION AVAILABILITY	
(-DS AVAILABLE ON -05.0 LEADSTYLE ONLY) (-L AVAILABLE ON -05.0, -08.0, -09.0 LEADSTYLES ONLY. -L ON -08.0 & -09.0 NOT TOOLED)	
POSITION	
-005	-L
-010	-DS, -L
-011	-L
-013	-DS, -L
-020	-L
-025	-DS, -L
-030	-L
-035	-L
-040	-L
-049	-DS, -L
-050	-L
-060	-L
-070	-L
-075	-L

TABLE 7				
POSITION	"J"	"K"	"L"	"M"
-005	13.00 [.512]	8.90 [.350]	10.00 [.394]	4.50 [.177]
-010	17.00 [.669]	12.90 [0.508]	14.00 [.551]	6.50 [.256]
-011	17.80 [.701]	13.70 [0.539]	14.80 [.583]	6.90 [.271]
-013	19.40 [.764]	15.30 [0.602]	16.40 [.646]	7.75 [.303]
-020	25.00 [.984]	20.90 [0.823]	22.00 [.866]	10.50 [.413]
-025	29.00 [1.142]	24.90 [0.980]	26.00 [1.024]	12.50 [.492]
-030	33.00 [1.299]	28.90 [1.138]	30.00 [1.181]	14.50 [.571]
-035	37.00 [1.457]	32.90 [1.295]	34.00 [1.339]	16.50 [.649]
-040	41.00 [1.614]	36.90 [1.453]	38.00 [1.496]	18.50 [.728]
-049	48.20 [1.898]	44.10 [1.736]	45.20 [1.780]	22.10 [.870]
-050	49.00 [1.929]	44.90 [1.768]	46.00 [1.811]	22.50 [.886]
-060	57.00 [2.244]	52.90 [2.083]	54.00 [2.126]	26.50 [1.043]
-070	65.00 [2.559]	60.90 [2.398]	62.00 [2.441]	30.50 [1.201]
-075	69.00 [2.717]	64.90 [2.555]	66.00 [2.598]	32.50 [1.279]

TABLE 3						
OPTION	STYLE	ERM8-XXX-XX.X-DV-01	T-1MXX-XX.X-X	WT-XX-XX-X	"S"	"T"
NONE	-02.0	ERM8-XXX-02.0-DV-01	T-1M37-02.0-X	N/A	N/A	N/A
	-05.0	ERM8-XXX-05.0-DV-01	T-1M37-05.0-X			
	-08.0	ERM8-XXX-08.0-DV-01	T-1M37-08.0-X			
	-09.0	ERM8-XXX-09.0-DV-01	T-1M37-09.0-X			
-DS		ERM8-XXX-05.0-DV-XX	T-1M48-05.0-X		N/A	
-EGP	-05.0	ERM8-XXX-05.0-DV-EGP	T-1M37-05.0-X	WT-29-06-T	1.17 [.046]	0.97 [.038]
-EGPS		ERM8-XXX-05.0-DV-EGPS	T-1M37-05.0-X	SH29-XX-02	1.17 [.046]	0.97 [.038]
-L		ERM8-XXX-05.0-DV-L	T-1M37-05.0-X	WT-29-03-F	1.17 [.046]	0.97 [.038]
**EGPS	-09.0	ERM8-XXX-09.0-DV-EGPS	T-1M37-09.0-X	SH29-XX-06	1.17 [.046]	0.97 [.038]

(**= NOT RELEASED FOR PRODUCTION)

PROPRIETARY NOTE
THIS DOCUMENT CONTAINS CONFIDENTIAL AND PROPRIETARY INFORMATION AND ALL DESIGN, MANUFACTURING, REPRODUCTION, USE, PATENT RIGHTS AND SALES RIGHTS ARE EXPRESSLY RESERVED BY SAMTEC, INC. THIS DOCUMENT SHALL NOT BE DISCLOSED, IN WHOLE OR PART, TO ANY UNAUTHORIZED PERSON OR ENTITY NOR REPRODUCED, TRANSFERRED OR INCORPORATED IN ANY OTHER PROJECT IN ANY MANNER WITHOUT THE EXPRESS WRITTEN CONSENT OF SAMTEC, INC.

DO NOT SCALE DRAWING
SHEET SCALE: 2:1

520 PARK EAST BLVD, NEW ALBANY, IN 47150
PHONE: 812-944-6733 FAX: 812-948-5047
e-Mail info@SAMTEC.com code 55322

DESCRIPTION:
0.8MM EDGE RATE TERMINAL ASSEMBLY

DWG. NO.
ERM8-XXX-XX.X-X-DV-XXXX-XX

BY: KNOWLDEN 9/27/2005 SHEET 2 OF 5

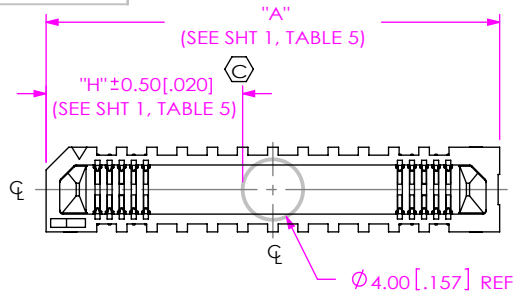


FIG 2
-K OPTION
(ERM8-030-XX.X-X-DV-K SHOWN)
(SOME CENTER FEATURES REMOVED FOR CLARITY)

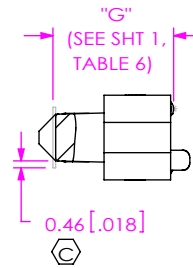


FIG 3
-EGP OPTION
(AVAILABLE ON -05.0 LEAD STYLE ONLY)
(ERM8-030-05.0-X-DV-EGP SHOWN)
(SAME AS FIG 2, EXCEPT AS SHOWN)
(SOME CENTER FEATURES REMOVED FOR CLARITY)

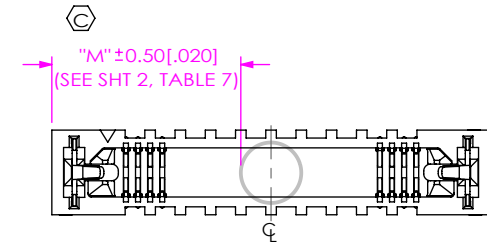


FIG 4
-K WITH -L OPTION
(ERM8-025-05.0-X-DV-K-L SHOWN)
(SAME AS FIG 2, EXCEPT AS SHOWN)
(SOME CENTER FEATURES REMOVED FOR CLARITY)

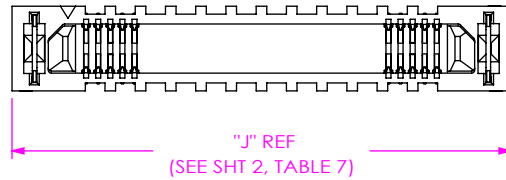
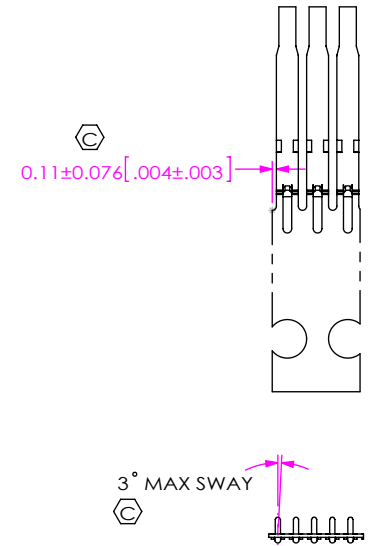
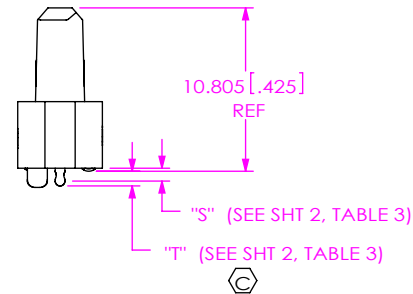
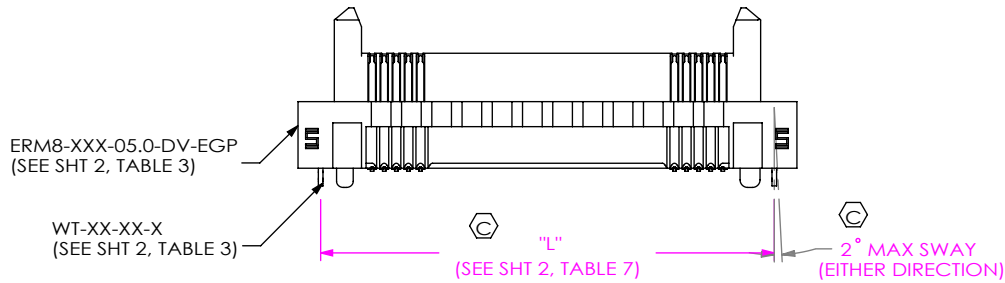


FIG 5
-KGP OPTION
(AVAILABLE ON -05.0 LEAD STYLE ONLY)
(ERM8-030-05.0-X-DV-KGP SHOWN)
(SAME AS FIG 3, EXCEPT AS SHOWN)
(SOME CENTER FEATURES REMOVED FOR CLARITY)



T-1M37-XX.X-X
IN-PROCESS VIEW

PROPRIETARY NOTE

THIS DOCUMENT CONTAINS CONFIDENTIAL AND PROPRIETARY INFORMATION AND ALL DESIGN, MANUFACTURING, REPRODUCTION, USE, PATENT RIGHTS AND SALES RIGHTS ARE EXPRESSLY RESERVED BY SAMTEC, INC. THIS DOCUMENT SHALL NOT BE DISCLOSED, IN WHOLE OR PART, TO ANY UNAUTHORIZED PERSON OR ENTITY NOR REPRODUCED, TRANSFERRED OR INCORPORATED IN ANY OTHER PROJECT IN ANY MANNER WITHOUT THE EXPRESS WRITTEN CONSENT OF SAMTEC, INC.

DO NOT SCALE DRAWING

SHEET SCALE: 2:1

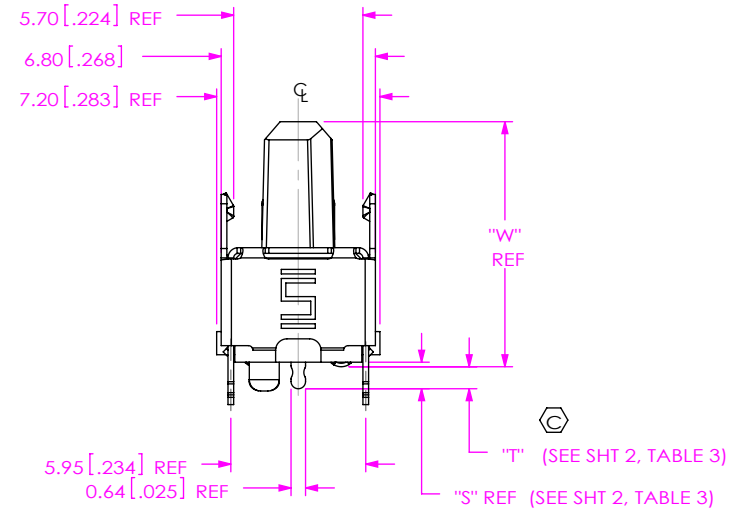
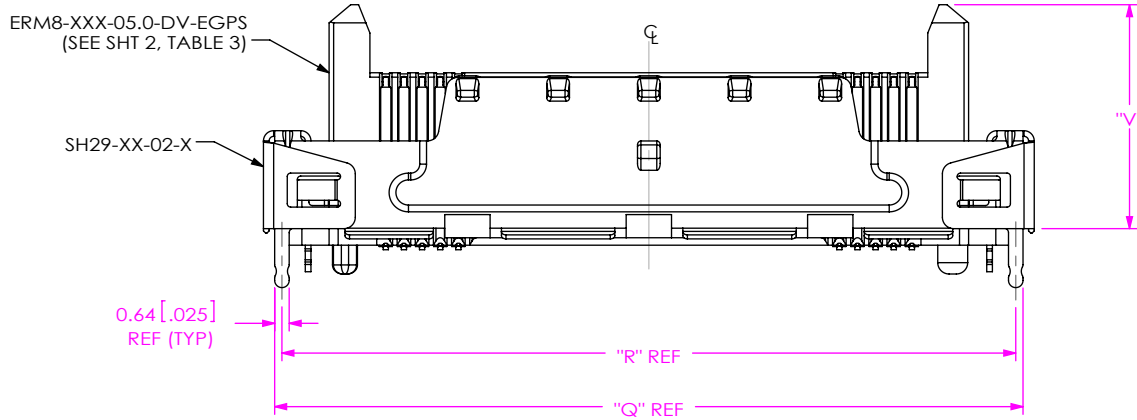
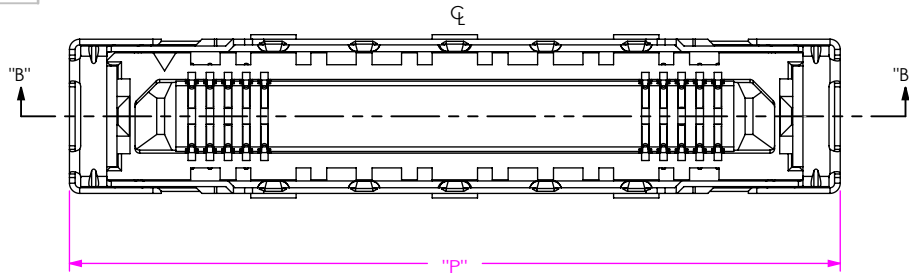


520 PARK EAST BLVD, NEW ALBANY, IN 47150
PHONE: 812-944-6733 FAX: 812-948-5047
e-Mail: info@SAMTEC.com code 55322

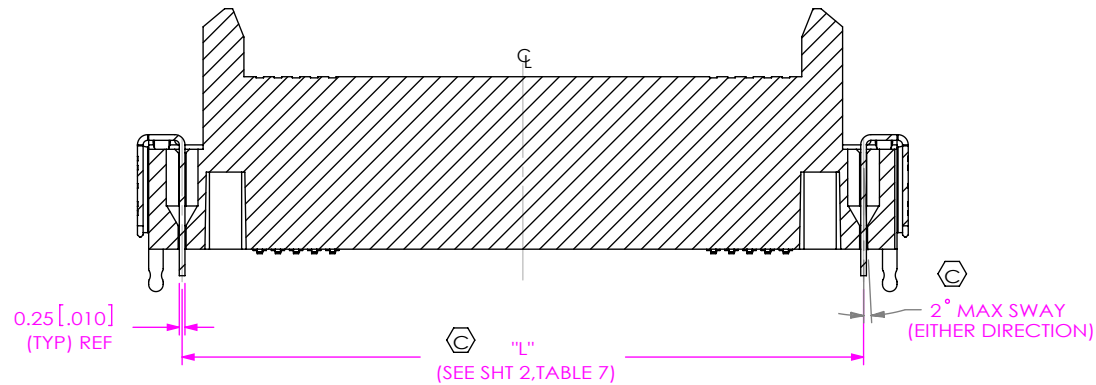
DESCRIPTION:
0.8MM EDGE RATE TERMINAL ASSEMBLY

DWG. NO.
ERM8-XXX-XX.X-X-DV-XXXX-XX

BY: KNOWLDEN 9/27/2005 SHEET 3 OF 5



LEAD STYLE	"V"	"W"
-05.0	9.87 [.389]	10.805 [.4254]
** -09.0	13.87 [.546]	14.805 [.5829]



SECTION "B"- "B"

No. OF POS.	"P"	"Q"	"R"
-10	18.0 [0.71]	17.00 [0.669]	16.36 [0.644]
-20	26.0 [1.02]	25.00 [0.984]	24.36 [0.959]
-25	30.0 [1.18]	29.00 [1.142]	28.36 [1.117]
-30	34.0 [1.34]	33.00 [1.299]	32.36 [1.274]

FIG 6
-EGPS OPTIONS
(AVAILABLE ON -05.0 & ** -09.0 LEAD STYLE,
-010, -020, -025 & -030 POS)
(ERM8-030-05.0-X-DV-EGPS SHOWN)
(SAME AS FIG 5, EXCEPT AS SHOWN)
(**= NOT RELEASED FOR PRODUCTION)

PROPRIETARY NOTE
THIS DOCUMENT CONTAINS CONFIDENTIAL AND PROPRIETARY INFORMATION AND ALL DESIGN, MANUFACTURING, REPRODUCTION, USE, PATENT RIGHTS AND SALES RIGHTS ARE EXPRESSLY RESERVED BY SAMTEC, INC. THIS DOCUMENT SHALL NOT BE DISCLOSED, IN WHOLE OR PART, TO ANY UNAUTHORIZED PERSON OR ENTITY NOR REPRODUCED, TRANSFERRED OR INCORPORATED IN ANY OTHER PROJECT IN ANY MANNER WITHOUT THE EXPRESS WRITTEN CONSENT OF SAMTEC, INC.

DO NOT SCALE DRAWING

SHEET SCALE: 3:1

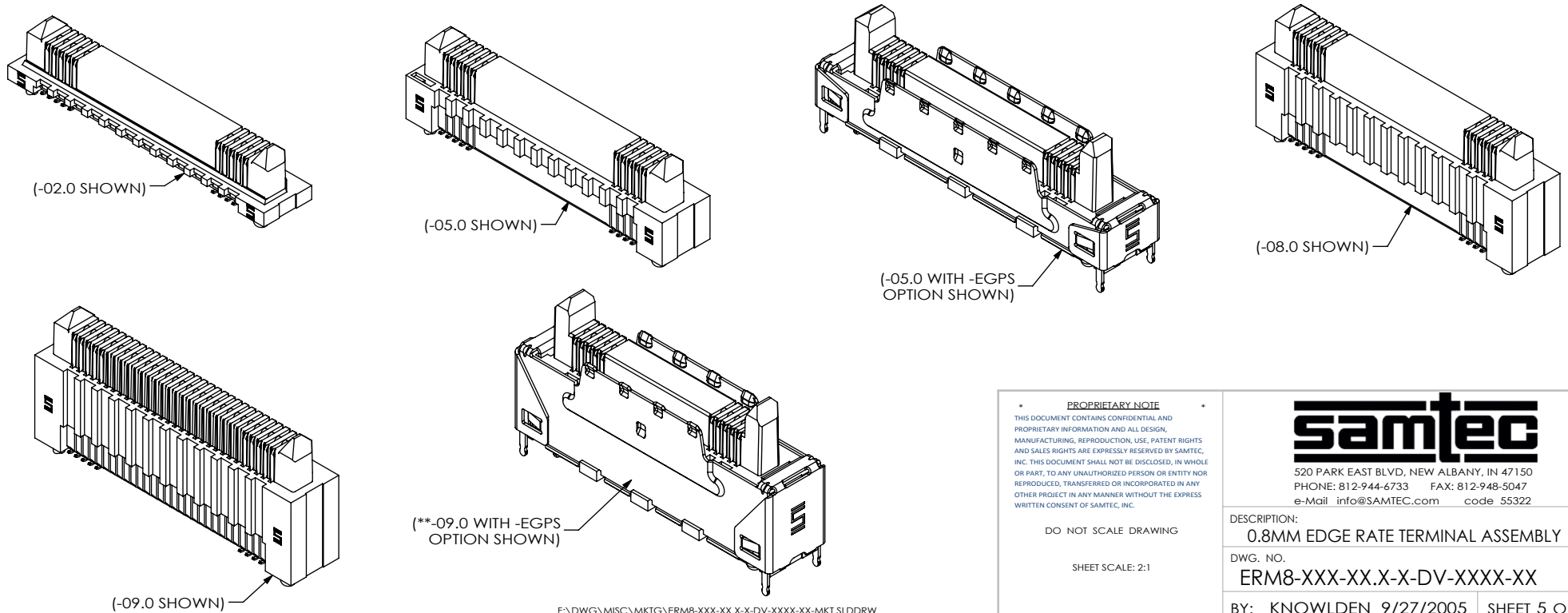
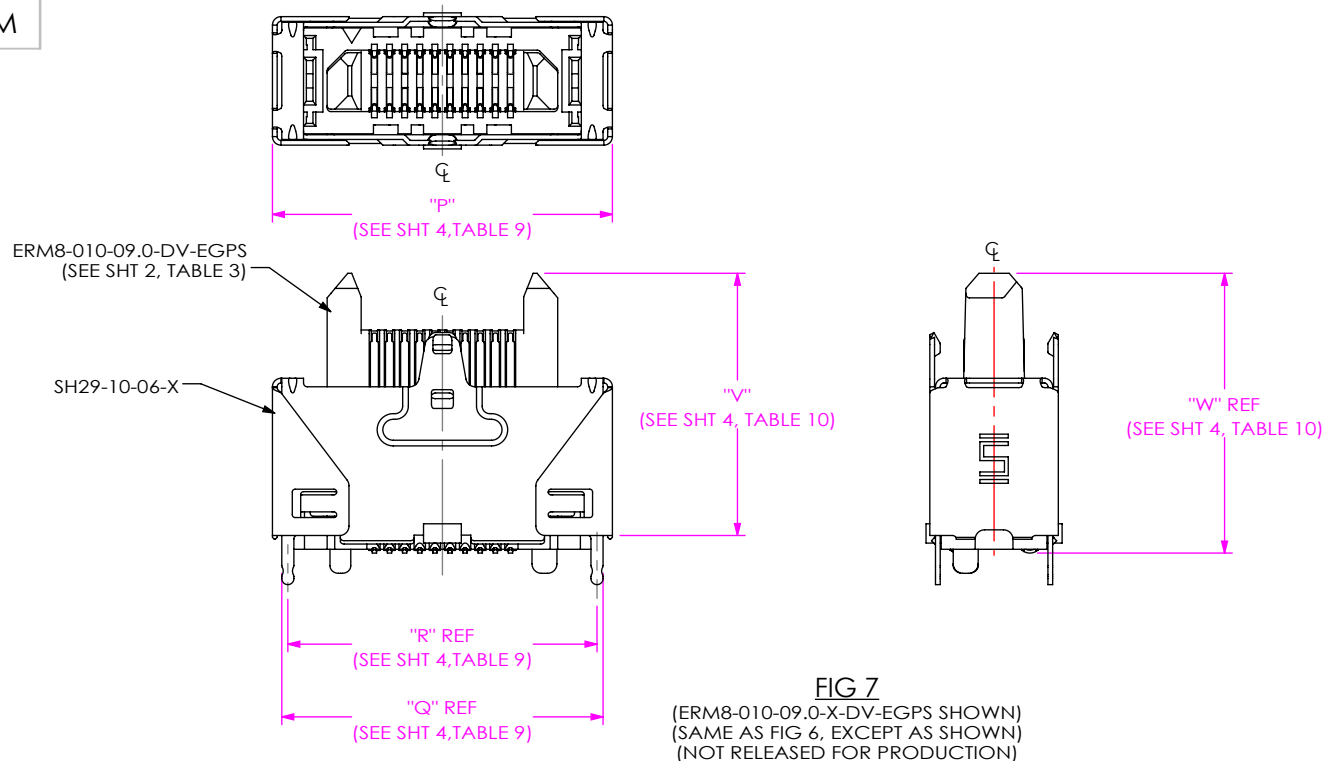


520 PARK EAST BLVD, NEW ALBANY, IN 47150
PHONE: 812-944-6733 FAX: 812-948-5047
e-Mail: info@SAMTEC.com code 55322

DESCRIPTION:
0.8MM EDGE RATE TERMINAL ASSEMBLY

DWG. NO.
ERM8-XXX-XX.X-X-DV-XXXX-XX

BY: KNOWLDEN9/27/2005 SHEET 4 OF 5



F:\DWG\MISC\MKTG\ERM8-XXX-XX.X-DV-XXXX-XX-MKT.SLDDRW

PROPRIETARY NOTE
THIS DOCUMENT CONTAINS CONFIDENTIAL AND PROPRIETARY INFORMATION AND ALL DESIGN, MANUFACTURING, REPRODUCTION, USE, PATENT RIGHTS AND SALES RIGHTS ARE EXPRESSLY RESERVED BY SAMTEC, INC. THIS DOCUMENT SHALL NOT BE DISCLOSED, IN WHOLE OR PART, TO ANY UNAUTHORIZED PERSON OR ENTITY NOR REPRODUCED, TRANSFERRED OR INCORPORATED IN ANY OTHER PROJECT IN ANY MANNER WITHOUT THE EXPRESS WRITTEN CONSENT OF SAMTEC, INC.

DO NOT SCALE DRAWING

SHEET SCALE: 2:1



520 PARK EAST BLVD, NEW ALBANY, IN 47150
PHONE: 812-944-6733 FAX: 812-948-5047
e-Mail info@SAMTEC.com code 55322

DESCRIPTION:
0.8MM EDGE RATE TERMINAL ASSEMBLY

DWG. NO.
ERM8-XXX-XX.X-X-DV-XXXX-XX

BY: KNOWLDEN 9/27/2005 SHEET 5 OF 5