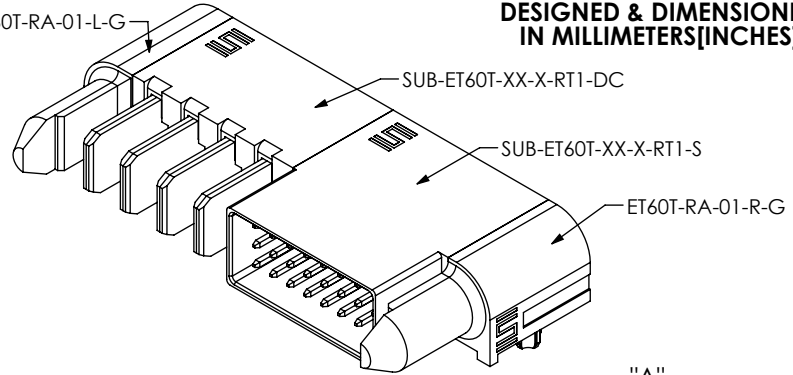


ET60T-RA-01-L-G

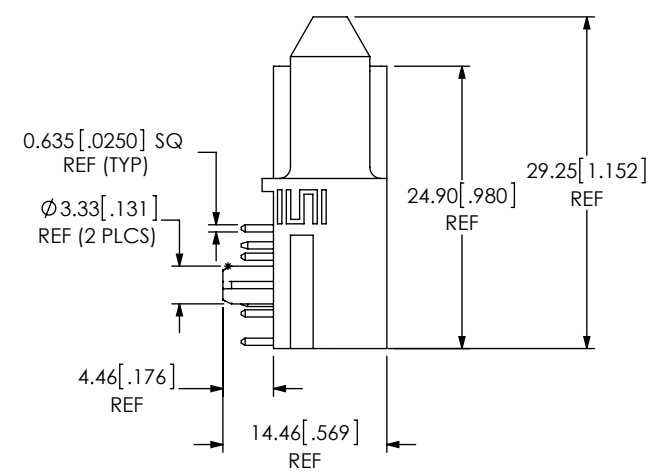
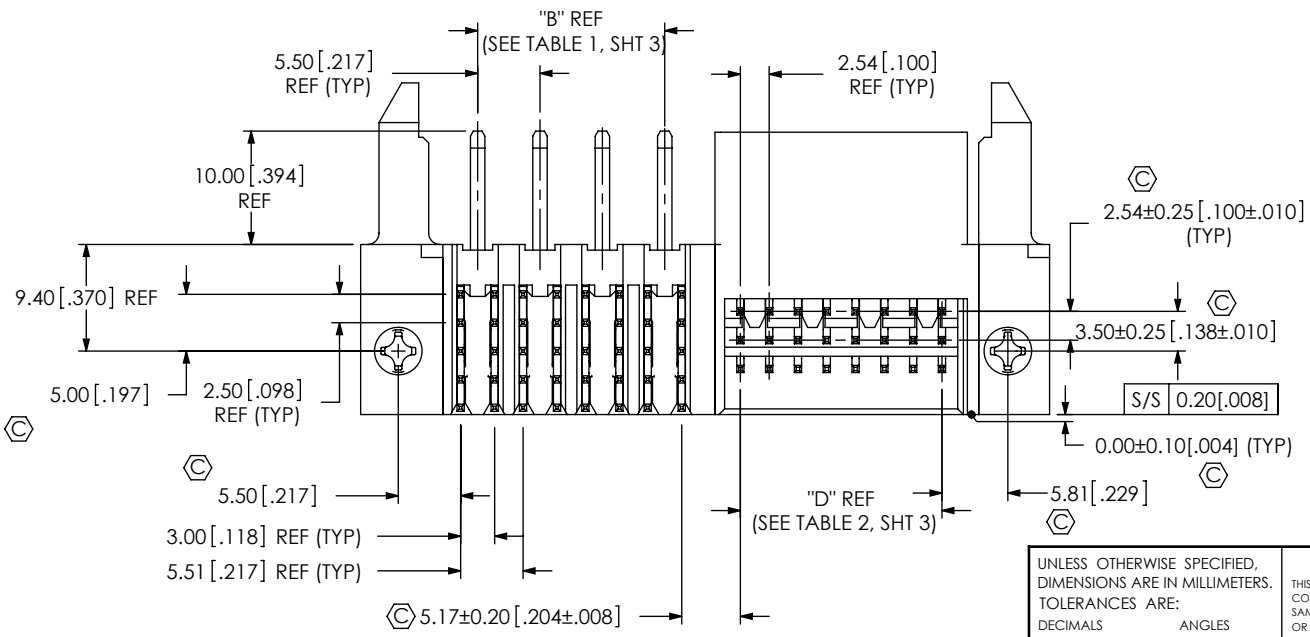
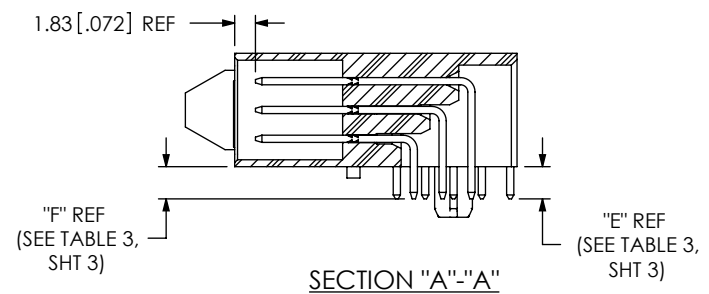
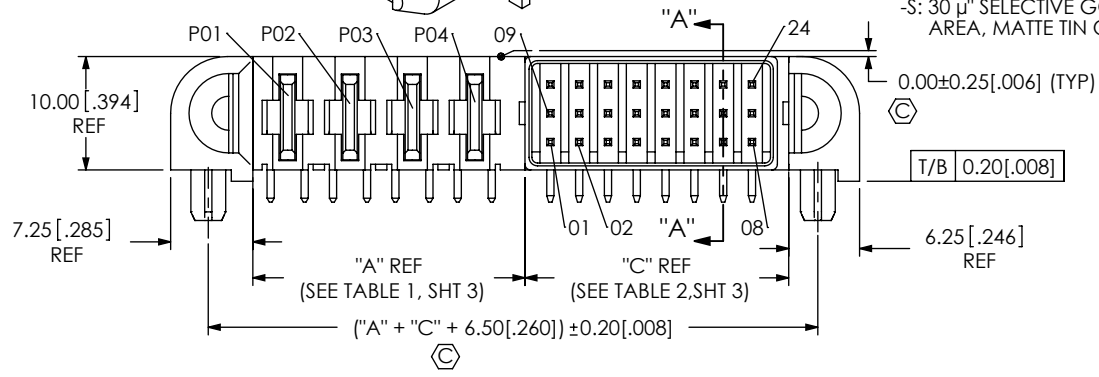
DESIGNED & DIMENSIONED  
IN MILLIMETERS(INCHES)

ET60T-XX-XX-XX-X-RXX-GP-XX

DO NOT  
SCALE FROM  
THIS PRINT



- POWER POS (LEFT)**  
-00, \*-01, -02, -03, -04, \*-05,  
-06, \*-07, \*-08, \*-09, \*-10
- SIGNAL POS (TOTAL)**  
-00, \*-06, \*-12, \*-18,  
-24, \*-30, \*-36
- POWER POS (RIGHT)**  
-00, \*-01, -02, -03, -04, \*-05,  
-06, \*-07, \*-08, \*-09, \*-10
- PLATING SPECIFICATION**  
-L: 10 μ" SELECTIVE GOLD IN CONTACT  
AREA, MATTE TIN ON TAIL  
-S: 30 μ" SELECTIVE GOLD IN CONTACT  
AREA, MATTE TIN ON TAIL
- OPTIONS**  
-HS: HOT SWAP  
(LONG PINS, OUTER POS  
PWR 10 MM, TOP ROW SIG)  
(LEAVE BLANK FOR NO HOT SWAP)
- GUIDE POST**
- TAIL**  
-RT1: RA-TH, .062" PCB  
\*-RT2: RA-TH, .093" PCB  
\*-RP: PRESS FIT (POWER PIN ONLY)  
(FOR -RP SIGNAL POS MUST BE -RT1)
- (\* = NOT TOOLED)



NOTES:

1. Ⓢ REPRESENTS A CRITICAL DIMENSION.
2. MINIMUM PUSHOUT FORCE: 3.0 LBS FOR SIGNAL & POWER PINS.
3. CONTACT SAMTEC FOR CONNECTOR PRESS FIT INSTRUCTIONS AND REQUIRED FIXTURES.  
ALL P/N'S REQUIRE PRESSING TO PCB DUE TO ALIGNMENT PEGS.
4. MAXIMUM BURR ALLOWANCE: 0.038[.0015].
5. ASSEMBLIES TO BE PACKAGED IN TRAYS.

FIG 1  
ET60T-04-24-00-X-RT1-GP SHOWN

UNLESS OTHERWISE SPECIFIED, DIMENSIONS ARE IN MILLIMETERS. TOLERANCES ARE: DECIMALS ANGLES X.X: ±0.3[.01] X.XX: ±0.13[.005] X.XXX: ±0.051[.0020]	<b>PROPRIETARY NOTE</b> THIS DOCUMENT CONTAINS INFORMATION CONFIDENTIAL AND PROPRIETARY TO SAMTEC, INC. AND SHALL NOT BE REPRODUCED OR TRANSFERRED TO OTHER DOCUMENTS OR DISCLOSED TO OTHERS OR USED FOR ANY PURPOSE OTHER THAN THAT WHICH IT WAS OBTAINED WITHOUT THE EXPRESSED WRITTEN CONSENT OF SAMTEC, INC.		
		520 PARK EAST BLVD., NEW ALBANY, IN 47150 PHONE: 812-944-6733 FAX: 812-948-5047 e-Mail: info@SAMTEC.com code 53322	
MATERIAL: DO NOT SCALE DRAWING	SHEET SCALE: 3:2	DESCRIPTION: R/A PLUG TEN60 POWER ASSEM	
INSULATOR: LCP, COLOR: BLACK SIGNAL TERMINAL: PHOS BRONZE POWER TERMINAL: COPPER ALLOY		DWG. NO. ET60T-XX-XX-XX-X-RXX-GP-XX	
F:\DWG\MISC\MKTG\ET60T-XX-XX-XX-X-RXX-GP-XX-MKT.SLDDRW		BY: ROY LUO 07/06/2011 SHEET 1 OF 3	

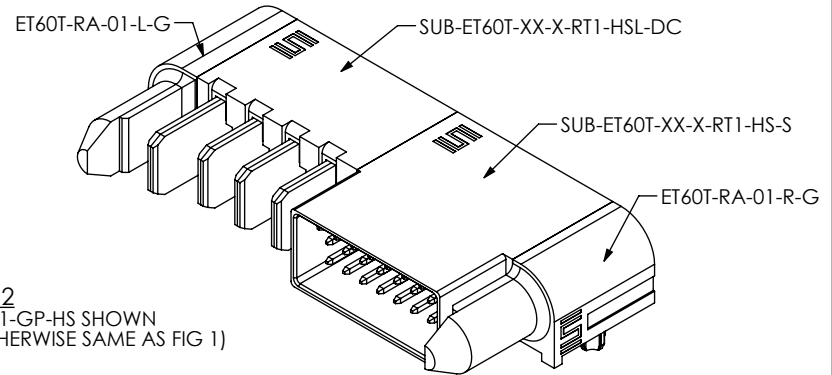
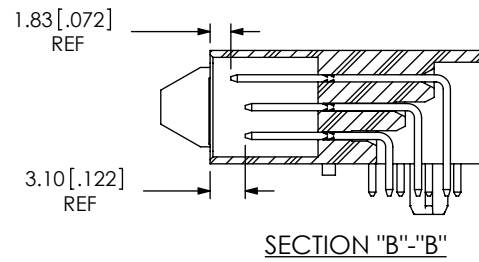
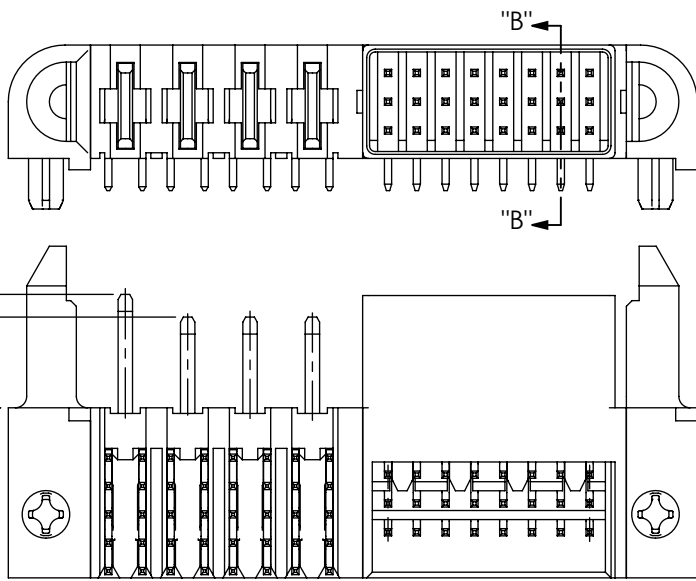


FIG 2  
ET60T-04-24-00-X-RT1-GP-HS SHOWN  
(DIFFERENT AS SHOWN, OTHERWISE SAME AS FIG 1)

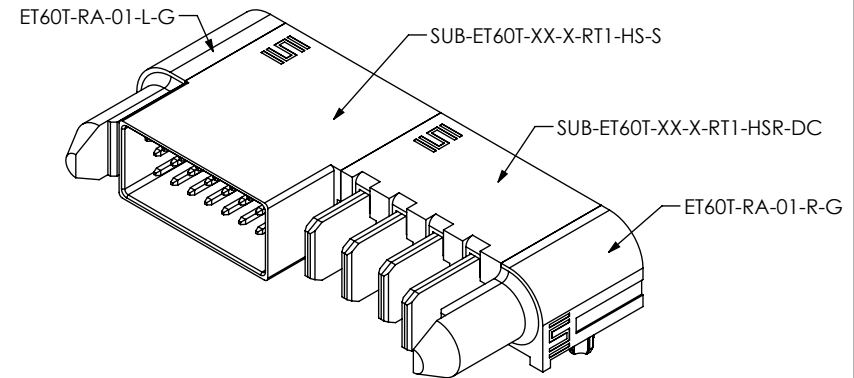
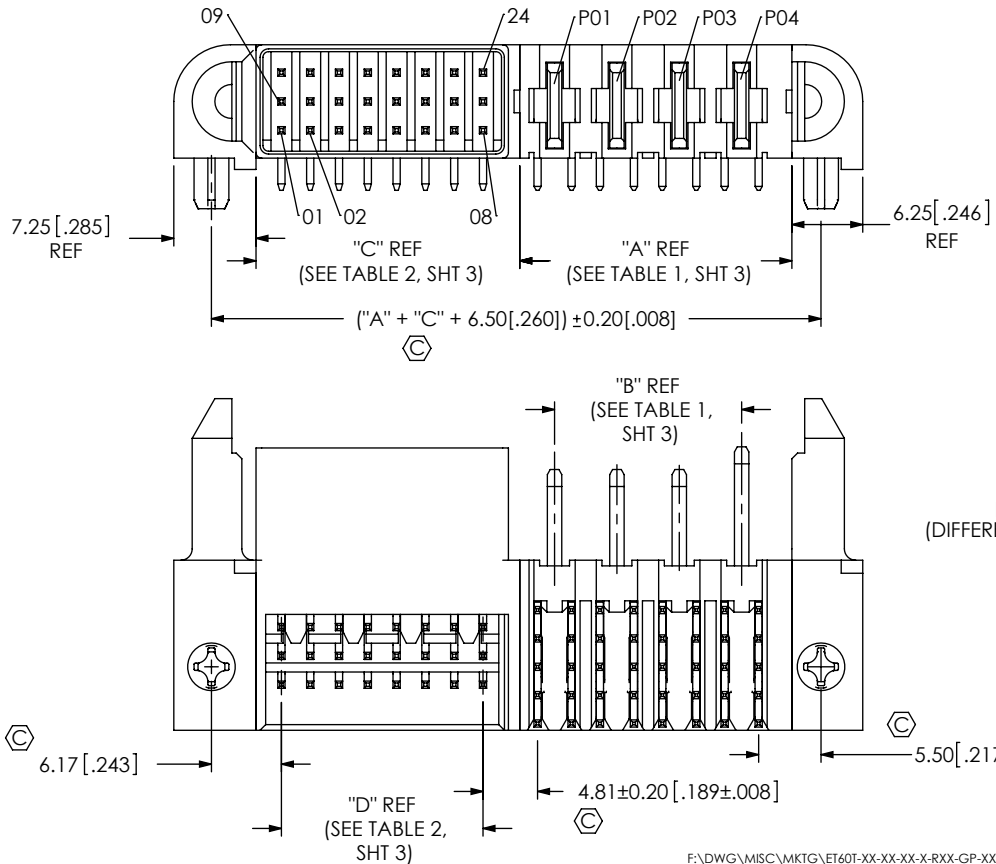


FIG 3  
ET60T-00-24-04-X-RT1-GP-HS SHOWN  
(DIFFERENT AS SHOWN, OTHERWISE SAME AS FIG 1)

PROPRIETARY NOTE

THIS DOCUMENT CONTAINS INFORMATION CONFIDENTIAL AND PROPRIETARY TO SAMTEC, INC. AND SHALL NOT BE REPRODUCED OR TRANSFERRED TO OTHER DOCUMENTS OR DISCLOSED TO OTHERS OR USED FOR ANY PURPOSE OTHER THAN THAT WHICH IT WAS OBTAINED WITHOUT THE EXPRESSED WRITTEN CONSENT OF SAMTEC, INC.

DO NOT SCALE DRAWING

SHEET SCALE: 3:2

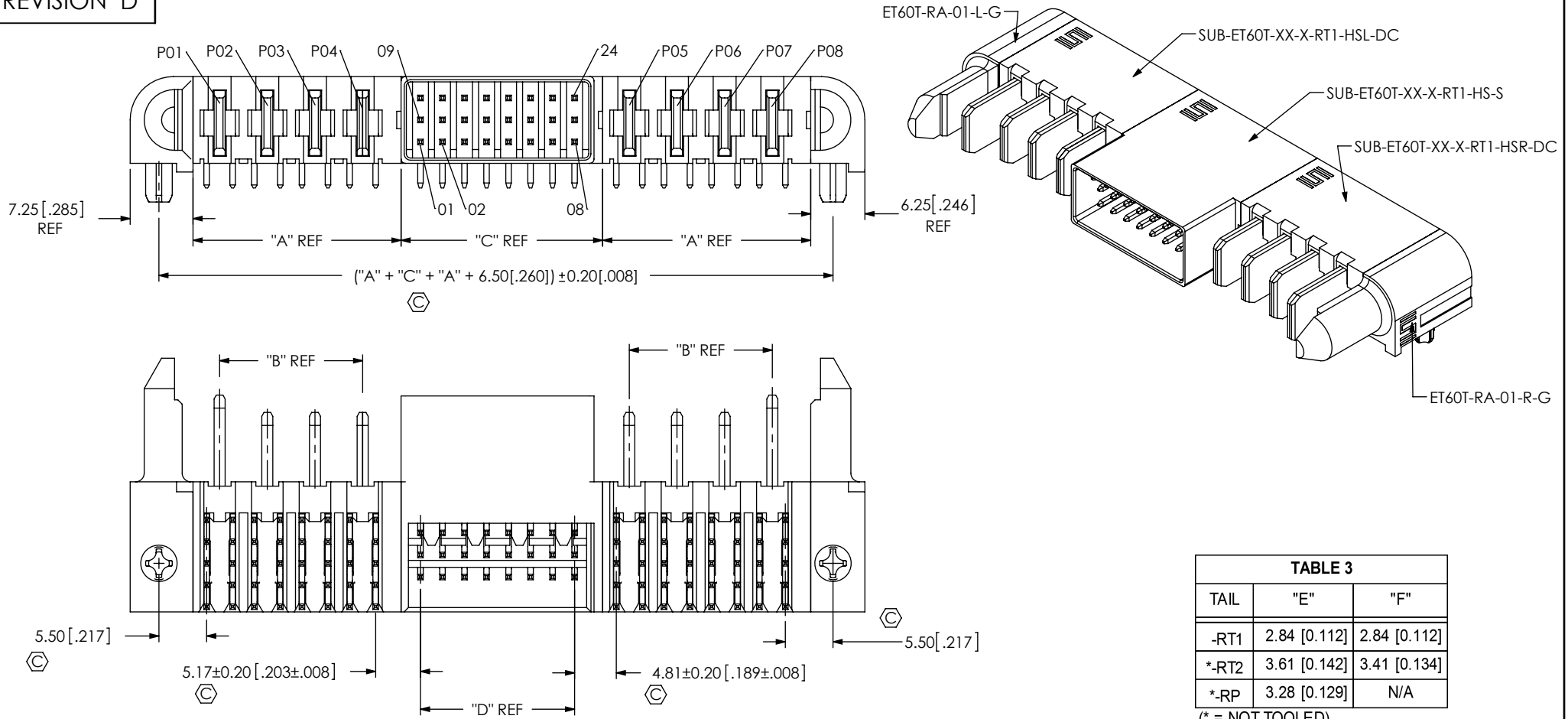
**samtec**

520 PARK EAST BLVD, NEW ALBANY, IN 47150  
PHONE: 812-944-6733 FAX: 812-948-5047  
e-Mail: info@SAMTEC.com code 55322

DESCRIPTION:  
R/A PLUG TEN60 POWER ASSEM

DWG. NO.  
ET60T-XX-XX-XX-X-RXX-GP-XX

BY: ROY LUO 07/06/2011 SHEET 2 OF 3



**TABLE 3**

TAIL	"E"	"F"
-RT1	2.84 [0.112]	2.84 [0.112]
*-RT2	3.61 [0.142]	3.41 [0.134]
*-RP	3.28 [0.129]	N/A

(\* = NOT TOOLED)

**FIG 4**  
 ET60T-04-24-04-X-RT1-GP-HS SHOWN  
 (DIFFERENT AS SHOWN, OTHERWISE SAME AS FIG 1)

**TABLE 1**


POWER POS	"A"	"B"
*-01	7.50 [0.295]	N/A
-02	13.00 [0.512]	5.50 [0.217]
-03	18.50 [0.728]	11.00 [0.433]
-04	24.00 [0.945]	16.50 [0.650]
*-05	29.50 [1.161]	22.00 [0.866]
-06	35.00 [1.378]	27.50 [1.083]
*-07	40.50 [1.594]	33.00 [1.299]
*-08	46.00 [1.811]	38.50 [1.516]
*-09	51.50 [2.028]	44.00 [1.732]
*-10	57.00 [2.244]	49.50 [1.949]

(\* = NOT TOOLED)

**TABLE 2**

SIGNAL POS	"C"	"D"
*-06	8.02 [0.316]	2.54 [0.100]
*-12	13.10 [0.516]	7.62 [0.300]
*-18	18.18 [0.716]	12.70 [0.500]
-24	23.26 [0.916]	17.78 [0.700]
*-30	28.34 [1.116]	22.86 [0.900]
*-36	33.42 [1.316]	27.94 [1.100]

(\* = NOT TOOLED)

<p><b>PROPRIETARY NOTE</b>                  THIS DOCUMENT CONTAINS INFORMATION CONFIDENTIAL AND PROPRIETARY TO SAMTEC, INC. AND SHALL NOT BE REPRODUCED OR TRANSFERRED TO OTHER DOCUMENTS OR DISCLOSED TO OTHERS OR USED FOR ANY PURPOSE OTHER THAN THAT WHICH IT WAS OBTAINED WITHOUT THE EXPRESSED WRITTEN CONSENT OF SAMTEC, INC.</p> <p>DO NOT SCALE DRAWING</p> <p>SHEET SCALE: 3:2</p>		
	<p>520 PARK EAST BLVD, NEW ALBANY, IN 47150                  PHONE: 812-944-6733 FAX: 812-948-5047                  e-Mail: info@SAMTEC.com code 55322</p>	
	<p>DESCRIPTION:                  R/A PLUG TEN60 POWER ASSEM</p>	
	<p>DWG. NO.                  ET60T-XX-XX-XX-X-RXX-GP-XX</p>	
	<p>BY: ROY LUO 07/06/2011</p>	<p>SHEET 3 OF 3</p>