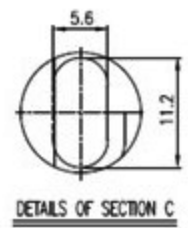
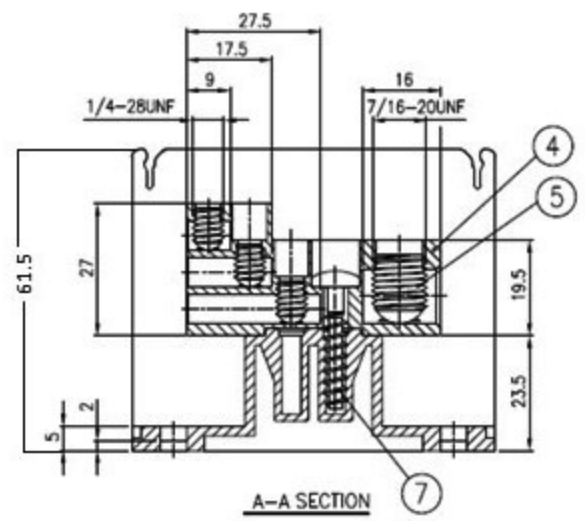
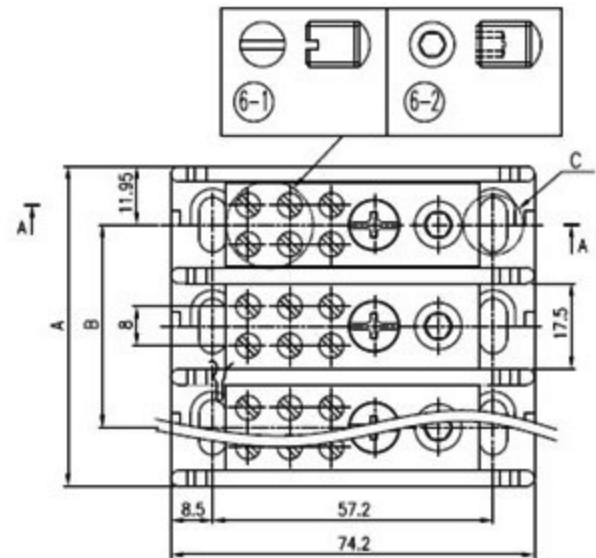
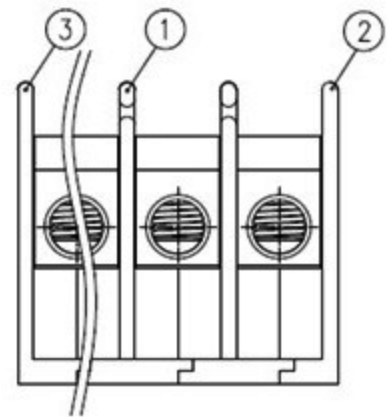
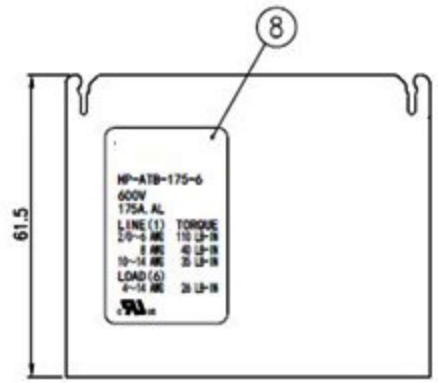


Dimension	Dimensional tolerance					
	Linear dimension			Roundness and chamfer Angle		
	With 1/2	Over 1/2	Over 1/2 to 1.50	With 1/3	Over 1/3	Over 1/3
Tolerance	±0.2	±0.3	±0.5	±0.6	±1.2	±0.4 ±1 ±2 ±3



SPECIFICATIONS	
VOLTAGE RATINGS:	600V
CURRENT RATINGS:	175A
CONDUCTORS:	ALUMINUM
MATERIALS:	PBT UL94V-0
SUITABLE WIRE:	
LINE:	2/0~14 AWG CU
LOAD:	4~14 AWG CU
WIRING TORQUE:	
LINE:	2/0~6 AWG 110 LB-IN
	8 AWG 40 LB-IN
	10 14 AWG 35 LB-IN
LOAD:	4~14 AWG 26 LB-IN
CERTIFICATION MARKING:	UL CUL



LINE NO	P	1P	2P	3P	4P
SPACING A		23.9	44.6	65.3	86
SPACING B			20.7	41.4	62.1

No.	PART No.	BOM							
1	HP-ATB-175-6-_P-L1	1	2	3	4	5	6	7	8

8	LABEL	PAPER ; 40X25	1		LA2000-36	
7	SCREW	SS ; 5x2.24Px25L	P	Sn PLATED	SC304Y	
6-2	SCREW	SS ; 1/4-28UNF	6P	Sn PLATED	SC308-1Y	HEX 1/8
6-1	SCREW	SS ; 1/4-28UNF	6P	Sn PLATED	SC308Y	SLOT
5-2	SCREW	SS ; 7/16-20UNF	P	Sn PLATED	SC392-2Y	HEX 5
5-1	SCREW	ALUMINUM ; 7/16-20UNF	P	Sn PLATED	SC303	HEX 3/16
4	CONDUCTORS	ALUMINUM	P	Sn PLATED	ALB-6	
3	SIDE PLATE	PBT ; UL94V-0	1		ASAB-175L	BLACK
2	SIDE PLATE	PBT ; UL94V-0	1		ASAB-175R	BLACK
1	BASE	PBT ; UL94V-0	P-1		ABATB-175	BLACK

No.	DATE	CONTENT	REVISOR	APPROVED	NO.	PART NAME	MATERIAL	Q'TY	FINISH	PART NO.	REMARK
SCALE	1/1	DIM.	mm		DRAWN BY	CHECKED BY	APPROVED BY	TITLE	TERMINAL BLOCK		
	L.F.	L.W.S.	L.W.S.								
	16.08.24	16.08.24	16.08.24		DWG NO.	HP-ATB-175-6-_P (H0)					

BlockMaster Electronics