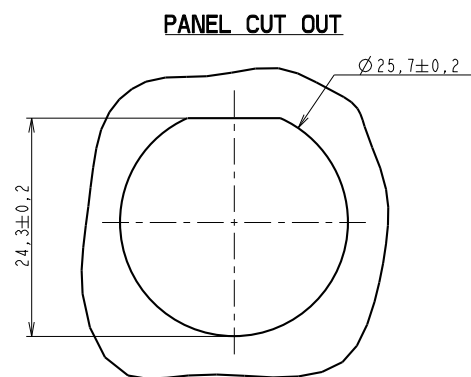
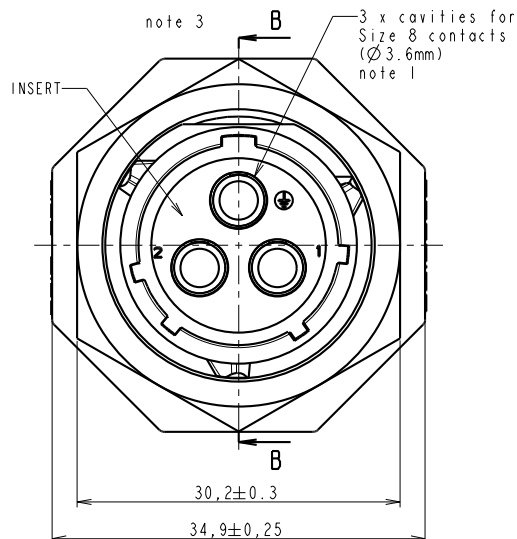


COUPE B-B  
ECHELLE 3/1



ECHELLE 2/1

### MATING FACE



### MATERIAL :

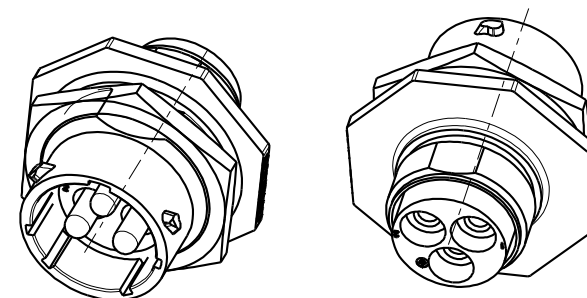
Shell: Polyamid UL94 V-0  
Insert: Polyamid UL94 V-0  
Seal gasket : Sealing IP68/69K : Silicone  
O'ring: nitril  
Nut: Aluminium alloy black anodized

### PERFORMANCE CHARACTERISTICS :

Operating temperature: -40°C up to 105°C  
Insulation resistance: 5000 MΩmin  
Test potential: 2000 Vrms between pole  
Corrosion salt spray: 500 hours  
Durability: 250 matings and unmatings  
Sealing in mated conditions:  
-IP68 1 bar during 1 week : immersion under 10 m of water.  
(IEC 60529)  
-IP69K : exposure to high pressure water of cleaning  
equipment (DIN 40050)



### NOTES :

- 1-Contact to be ordered separately : refer to TRIM TRIO catalog
- 2-Colored ring to be ordered separately refer to customer drawing C005-UTSI-A
- 3-Earth cavity is a First mate last break contact



P/N : UT57142GIP

CUSTOMER DRAWING

e	04/03/10	Diffusion for industrialisation			20603A
ISS	DATE	Latest modification - by: RAGINE M.			MOD N°
Designed by: ROUILLARD Ch		Date: 02/10/07	Type of drawing: Customer		
Checked by:		SEE DISTRIBUTION LIST		Date: SEE DISTRIBUTION LIST	
TITLE		JAM NUT RECEPTACLE WITH 3 CONTACTS Ø 3.6 mm UTS CONNECTOR			
Scale	General angular		MATERIAL --		
3/1	Tolerances: ±1°		--		
	General linear		General machining		Ra 3.2
	Tolerances ±0.2		surface texture		✓
			This document is the property of SOURIAU It must not be reproduced or communicated without permission		
FORMAT			SOURIAU DRG N°		
A2			C037-UTSI-A		
			SHEET 1 / 1		