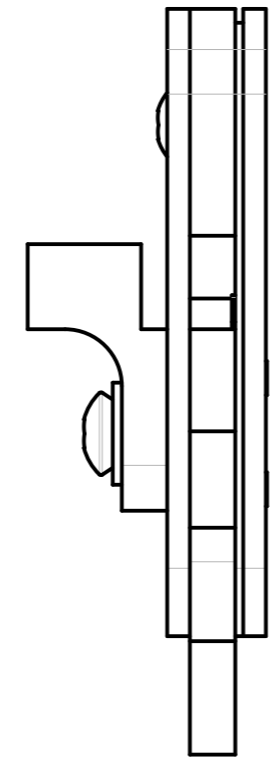
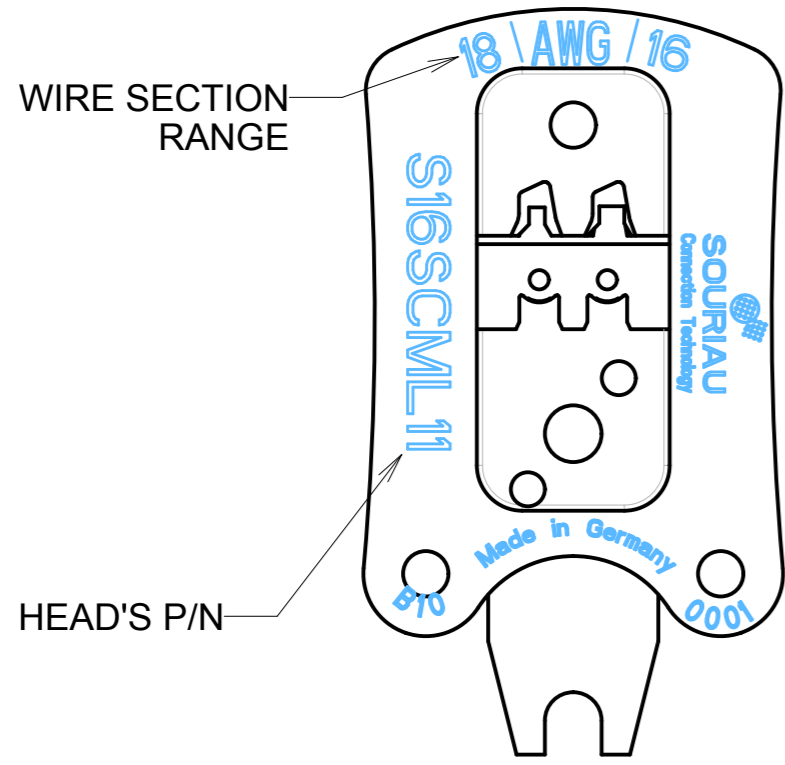


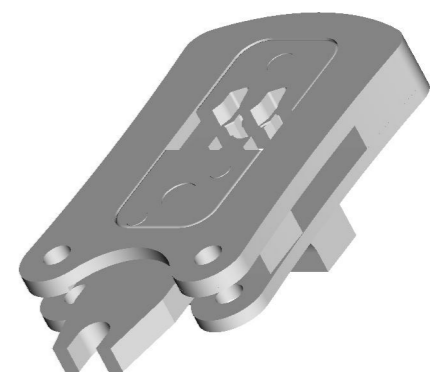
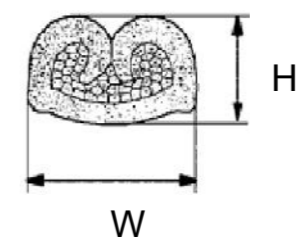
c:0;RL



TECHNICAL CHARACTERISTICS :
 Contact positioning with locator
 Burnished surface
 Fully recyclable
 RoHS (Directive 2002/95/EG) compliant

Weight : approx. 115 g
 Height : approx. 65mm
 Width : approx. 37mm

(1) Nota : issued from IEC60352-2
 Individual packaging



ACTIVE CONTACT PART	CONTACT TYPE	DIE LOCATION ON HEADS	WIRE SECTION RANGE (1)	SECTION (mm ²) (1)	TENSILE STRAIGHT TEST (mini) (1)	HEIGHT (mm) H (±0.075)	WIDTH (mm) W (±0.075)	HEAD'S P/N
SIZE 20	SM / SC 24 WL3*	26/24	AWG 26	0,12 min	15 N	0.80	1.50	S20SCM20
			AWG 24	0,25 max	32 N			
	SM / SC 20 WL3*	22/20	AWG 22	0,32 min	40 N	1.00	1.55	
			AWG 20	0,50 max	60 N			
SIZE 16	SM / SC 24ML1*	26/24	AWG 26	0,12 min	15 N	0.80	1.50	S16SCM20
			AWG 24	0,25 max	32 N			
	SM / SC 20ML1*	22/20	AWG 22	0,32 min	40 N	1.00	1.55	
			AWG 20	0,50 max	60 N			
	SM / SC 16ML11*	18	AWG 18	0,82 min	90 N	1.30	2.10	S16SCML11
		16	AWG 16	1,5 max	150 N	1.35	2.10	
	SM / SC 16ML1*	18	AWG 18	0,82 min	90 N	1.50	2.00	S16SCML1
		16	AWG 16	1,5 max	150 N	1.70	2.05	
SM / SC 14ML1*	14	AWG 14	2,5 max	230 N	1.80	2.60		

For other details please refer to technical notice N° BT254

P/N : SXXSCMXXX

C	30/05/11	Modification of the dim. H and W		N° 21805
ISS	DATE	Latest modification - by: ROUILLARD		MOD N°
Designed by:		RAGAINÉ M. Date: 03/08/10	CUSTOMER DRAWING	
TITLE		TRIM TRIO TOOLING CRIMPING TOOL'S HEAD FOR STAMPED AND FORMED CONTACTS		
Scale	1/1	General linear Tolerances: ± 0.2	NPRDS / PROJECT TOOLING	
		WWW.SOURIAU.COM		This document is the property of SOURIAU. It must not be reproduced or communicated without permission.
FORMAT	SOURIAU DRG N° SXXSCMXXX-C			SHEET 1 / 1