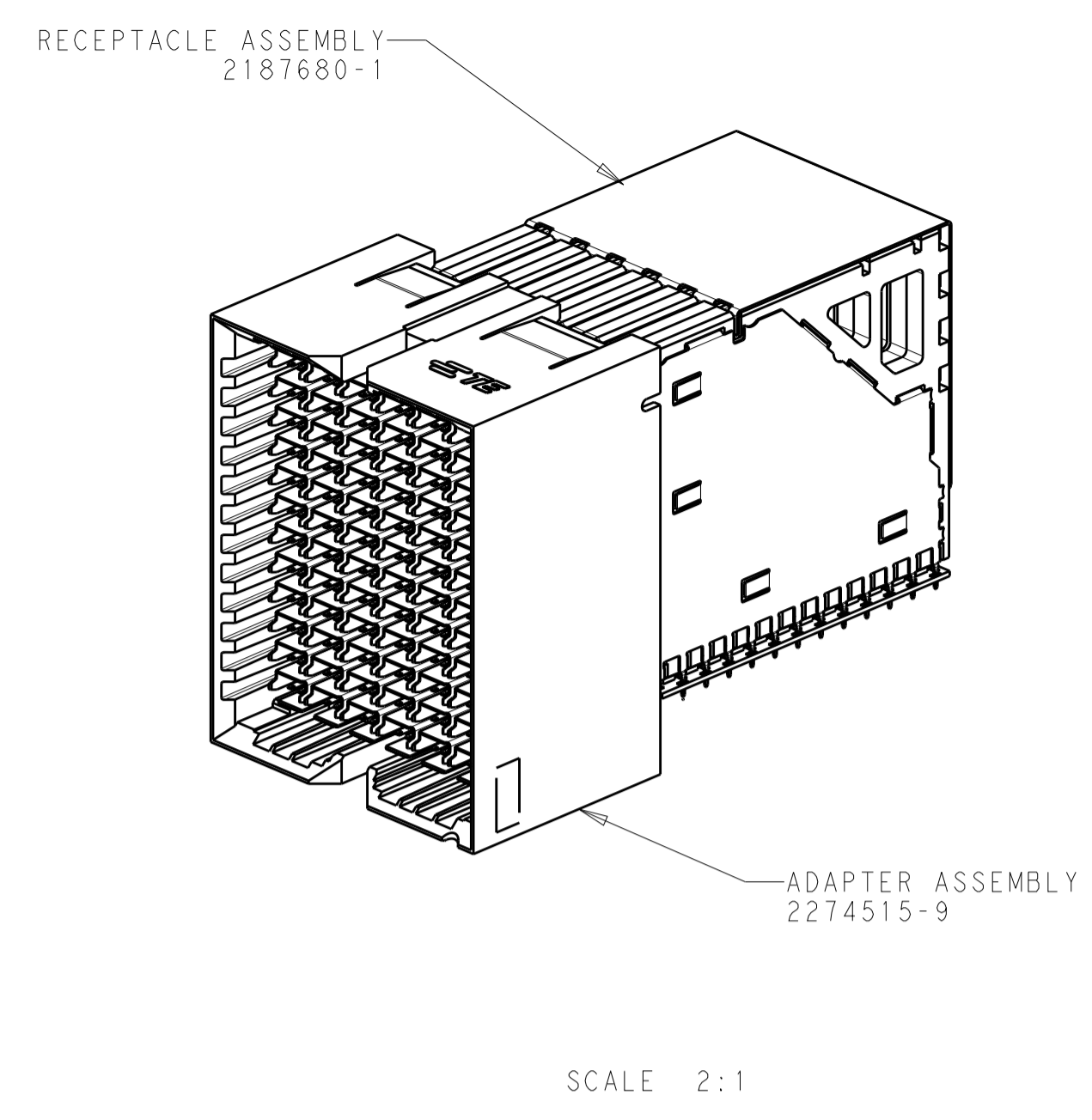
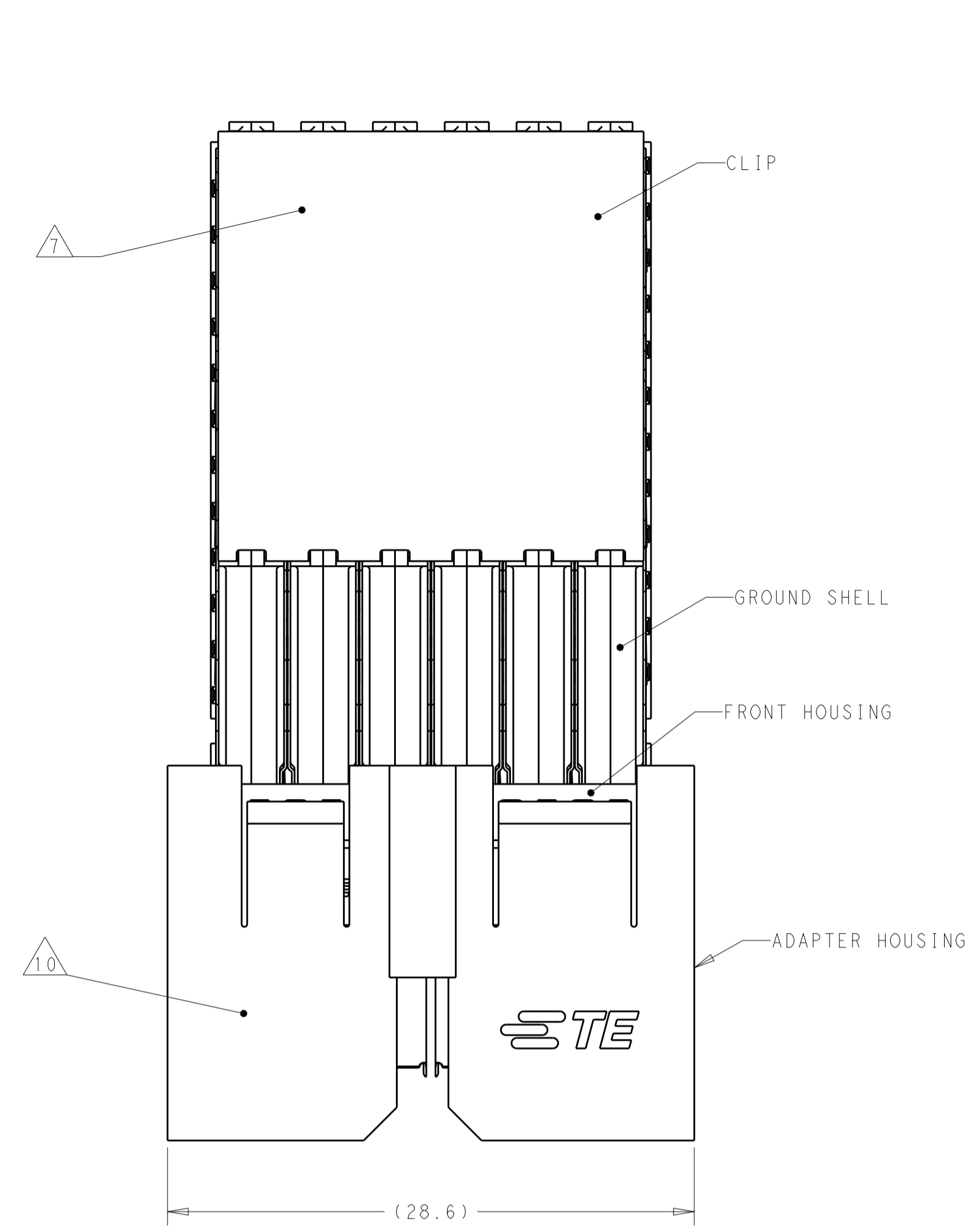
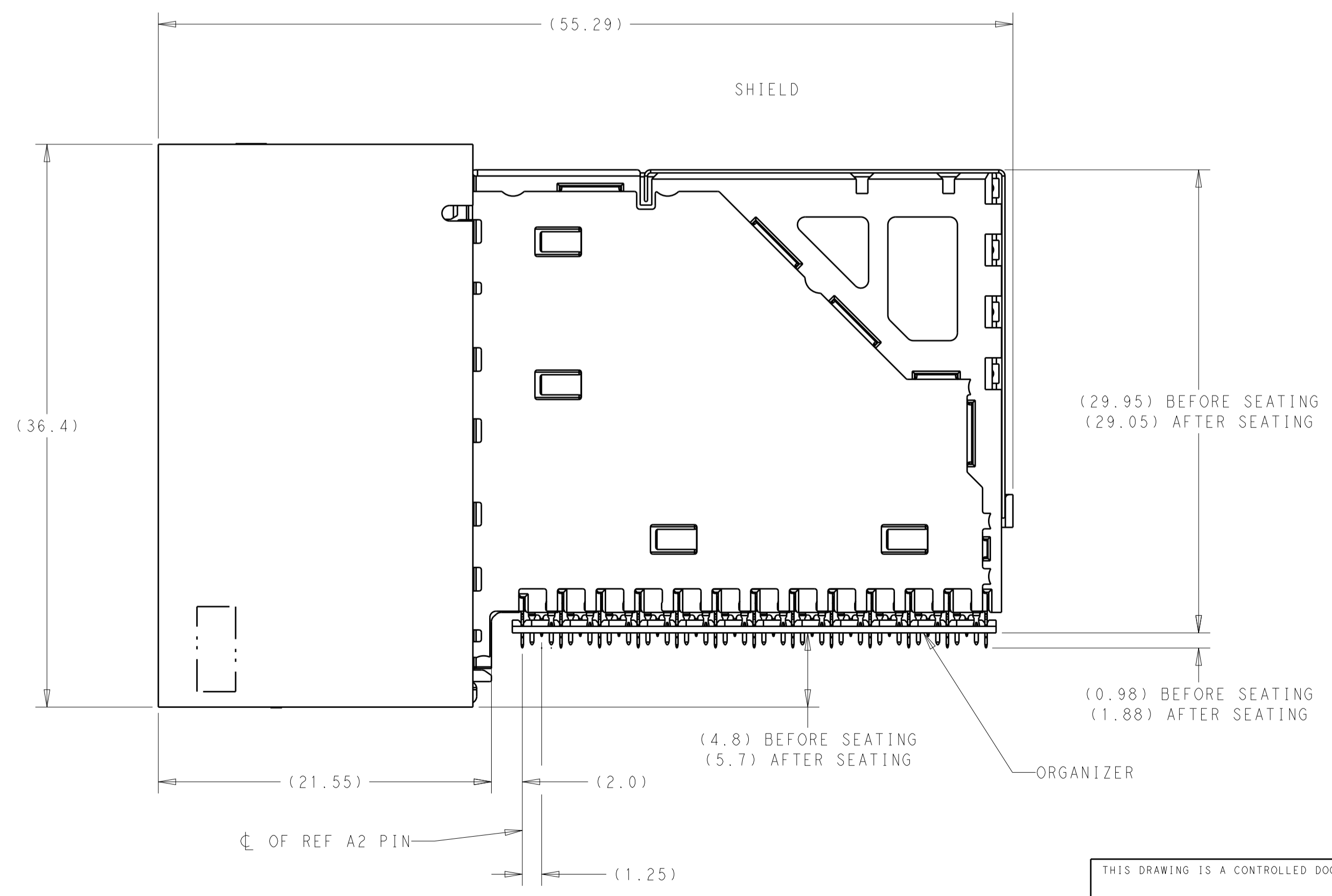
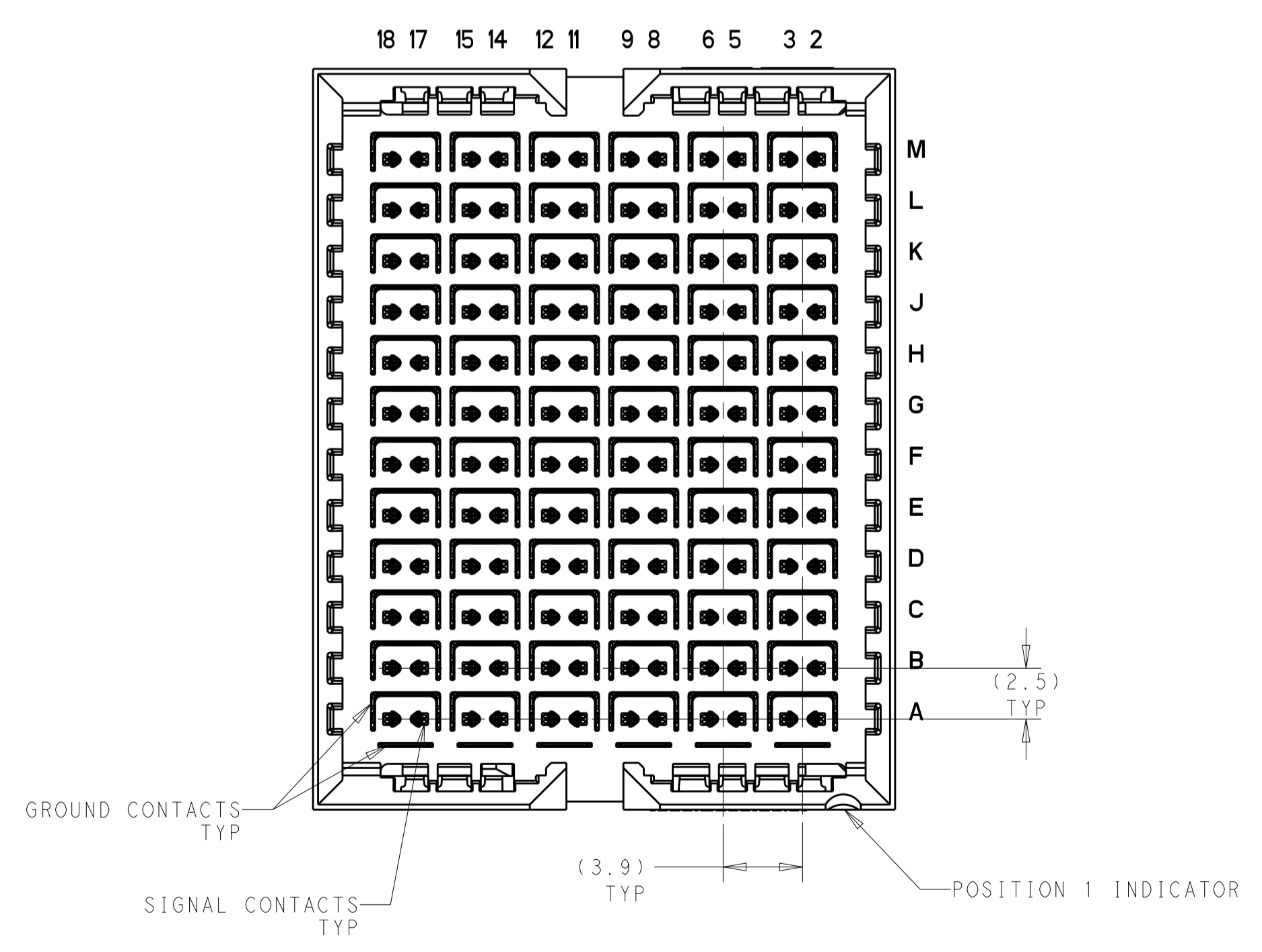


REVISIONS				
P.	LTN	DESCRIPTION	DATE	OWN APVD
5		RECEPTACLE PART NUMBER UPDATED	28OCT2016	NWS DS



- 1 CONTACTS AND SHIELDS - COPPER ALLOY
CLIP - STAINLESS STEEL
HOUSINGS, GROUND SHELLS, AND ORGANIZER - THERMOPLASTIC, UL 94V-0, BLACK
- 2 CONFORMS TO THE REQUIREMENTS OF TE PRODUCT SPECIFICATION 108-32112 BASED ON TELCORDIA GR-1217-CORE FOR SYSTEM QUALITY LEVEL III, APPLICATIONS IN CONTROLLED ENVIRONMENTS (CENTRAL OFFICE). COMPLIANT PIN AREA: 0.5µm MIN MATTE TIN.
- 3 GROUND PLATED THRU HOLE REQUIREMENTS:
FINISHED HOLE = $\varnothing 0.34 \pm 0.05$
HOLE SIZE PRIOR TO PLATING = $\varnothing 0.420 \pm 0.025$
COPPER THICKNESS = 0.025 MIN
IMMERSION TIN IF APPLICABLE = (0.00095)
- 4 SIGNAL PLATED THRU HOLE REQUIREMENTS:
FINISHED HOLE = $\varnothing 0.24 \pm 0.04$
HOLE SIZE PRIOR TO PLATING = $\varnothing 0.320 \pm 0.025$
COPPER THICKNESS = 0.025 MIN
IMMERSION TIN IF APPLICABLE = (0.00095)
- 5 SI VIA PLATED THRU HOLE REQUIREMENTS:
FINISHED HOLE = $\varnothing 0.34 \pm 0.05$
HOLE SIZE PRIOR TO PLATING = $\varnothing 0.420 \pm 0.025$
COPPER THICKNESS = 0.025 MIN
IMMERSION TIN IF APPLICABLE = (0.00095)
- 6 SI VIAS & SIGNAL HOLES:
PTH DIMENSIONS APPLY TO THE TOP 1.00mm OF THE PCB THICKNESS FROM THE CONNECTOR MOUNTING SIDE.
GROUND HOLES:
PTH DIMENSIONS APPLY TO THE TOP 1.25mm OF THE PCB THICKNESS FROM THE CONNECTOR MOUNTING SIDE.
- 7 CONNECTOR MARKED WITH PART NUMBER, DATE CODE, AND "100 OHM" IN APPROXIMATE AREA SHOWN.
- 8 DATUMS AND BASIC DIMENSIONS ESTABLISHED BY CUSTOMER
- 9 APPLIES TO FINISHED HOLE DIAMETER.
- 10 CONNECTOR MARKED WITH ASSEMBLY PART NUMBER, DATE CODE, AND "100 OHM" IN APPROXIMATE AREA SHOWN.



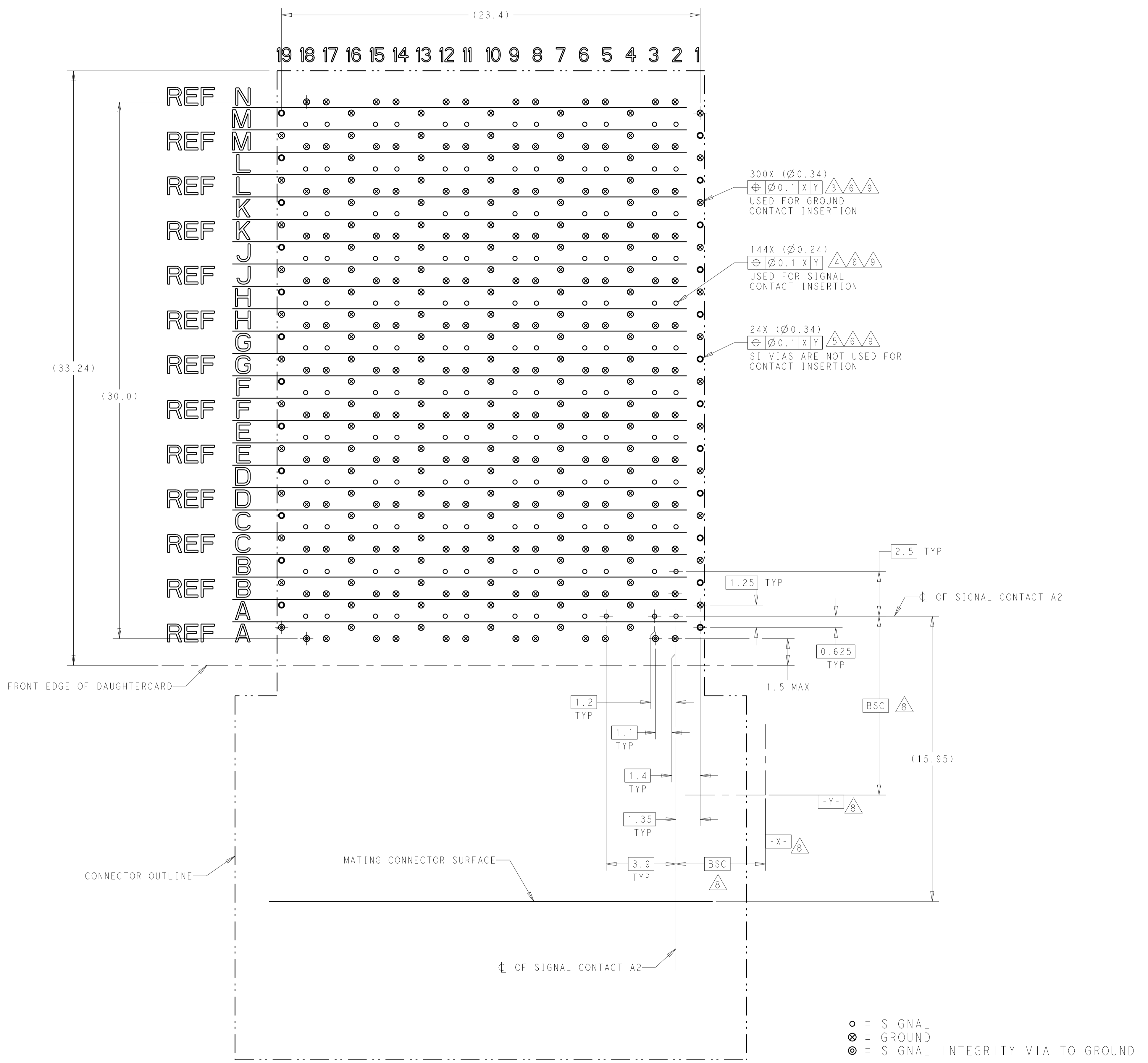
PRELIMINARY NOT RELEASED FOR PRODUCTION

THIS PRODUCT HAS NOT COMPLETED VALIDATION AND QUALIFICATION TESTING

THIS DRAWING IS A CONTROLLED DOCUMENT.		OWN: M. SHIRK 07APR2014	TE Connectivity
DIMENSIONS: mm		CHK: J. McCLELLAN 07APR2014	
TOLERANCES UNLESS OTHERWISE SPECIFIED:		APVD: J. McCLELLAN 07APR2014	NAME: RIGHT ANGLE ADAPTER ASSEMBLY, 12 PAIR 6 COLUMN, 100 OHM DPO, STRADA WHISPER
0 PLC ±		PRODUCT SPEC: 2	
1 PLC ±0.13		APPLICATION SPEC: 114-32120	SIZE: A1
2 PLC ±		WEIGHT: -	CAGE CODE: -
3 PLC ±		FINISH: 1	DRAWING NO: C=2274518
4 PLC ±		CUSTOMER DRAWING	SCALE: 4:1
ANGLES			SHEET 1 OF 2
FINISH			REV 5

2274518-1
PART NUMBER

REVISIONS				
P.	LTN.	DESCRIPTION	DATE	APVD.
-	-	SEE SHEET 1	-	-



RECOMMENDED PCB LAYOUT
 SINGLE CONNECTOR (NON-STACKING)
 COMPONENT SIDE SHOWN
 SCALE 8:1

**PRELIMINARY
 NOT RELEASED FOR PRODUCTION**

**THIS PRODUCT HAS NOT
 COMPLETED VALIDATION AND
 QUALIFICATION TESTING**

THIS DRAWING IS A CONTROLLED DOCUMENT.		DMN M. SHIRK 07APR2014	TE Connectivity
DIMENSIONS: mm		CHK J. McCLELLAN 07APR2014	
TOLERANCES UNLESS OTHERWISE SPECIFIED: 0 PLC ± 1 PLC ±0.13 2 PLC ± 3 PLC ± 4 PLC ± ANGLES ±		APVD J. McCLELLAN 07APR2014	NAME
MATERIAL		PRODUCT SPEC	RIGHT ANGLE ADAPTER ASSEMBLY, 12 PAIR 6 COLUMN, 100 OHM DPO, STRADA WHISPER
FINISH		APPLICATION SPEC	RESTRICTED TO
CUSTOMER DRAWING		WEIGHT	SIZE CAGE CODE DRAWING NO. REV
		SCALE 4:1	SHEET 2 OF 2 REV 5