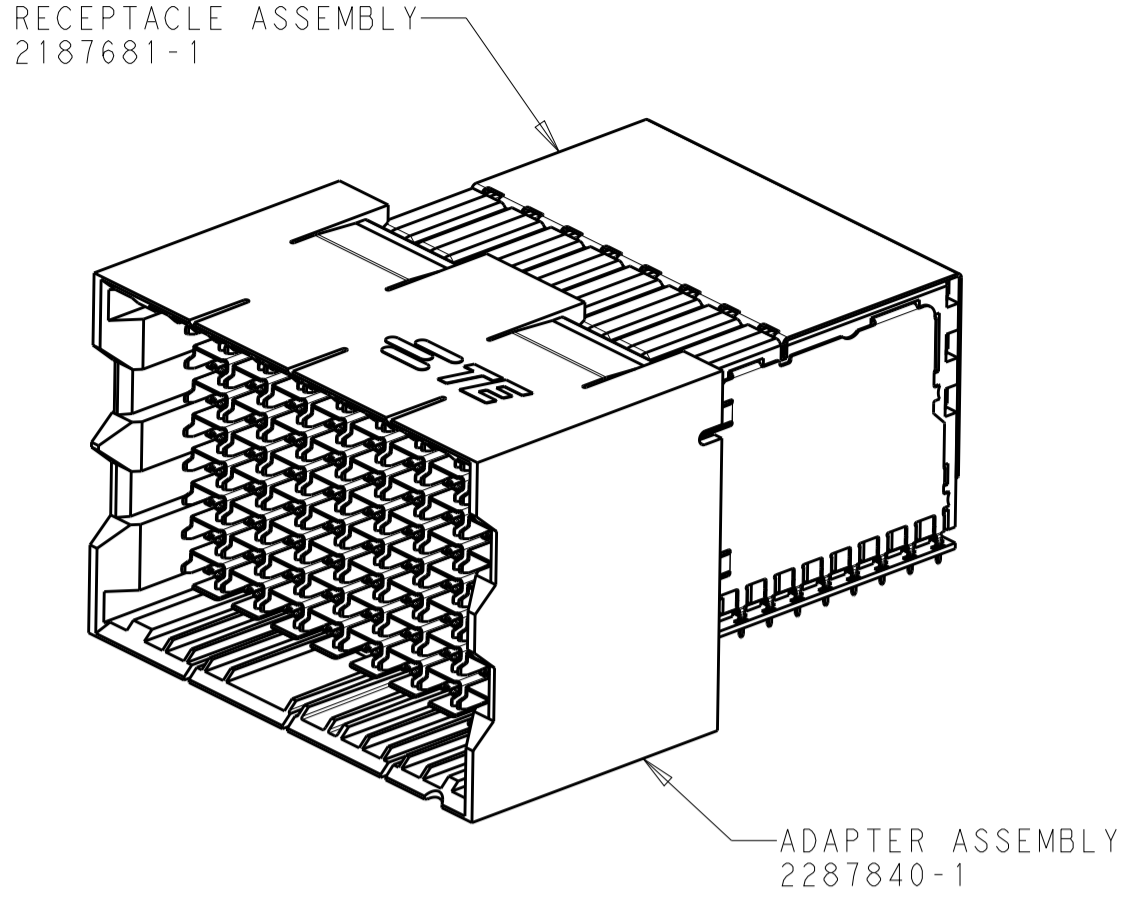
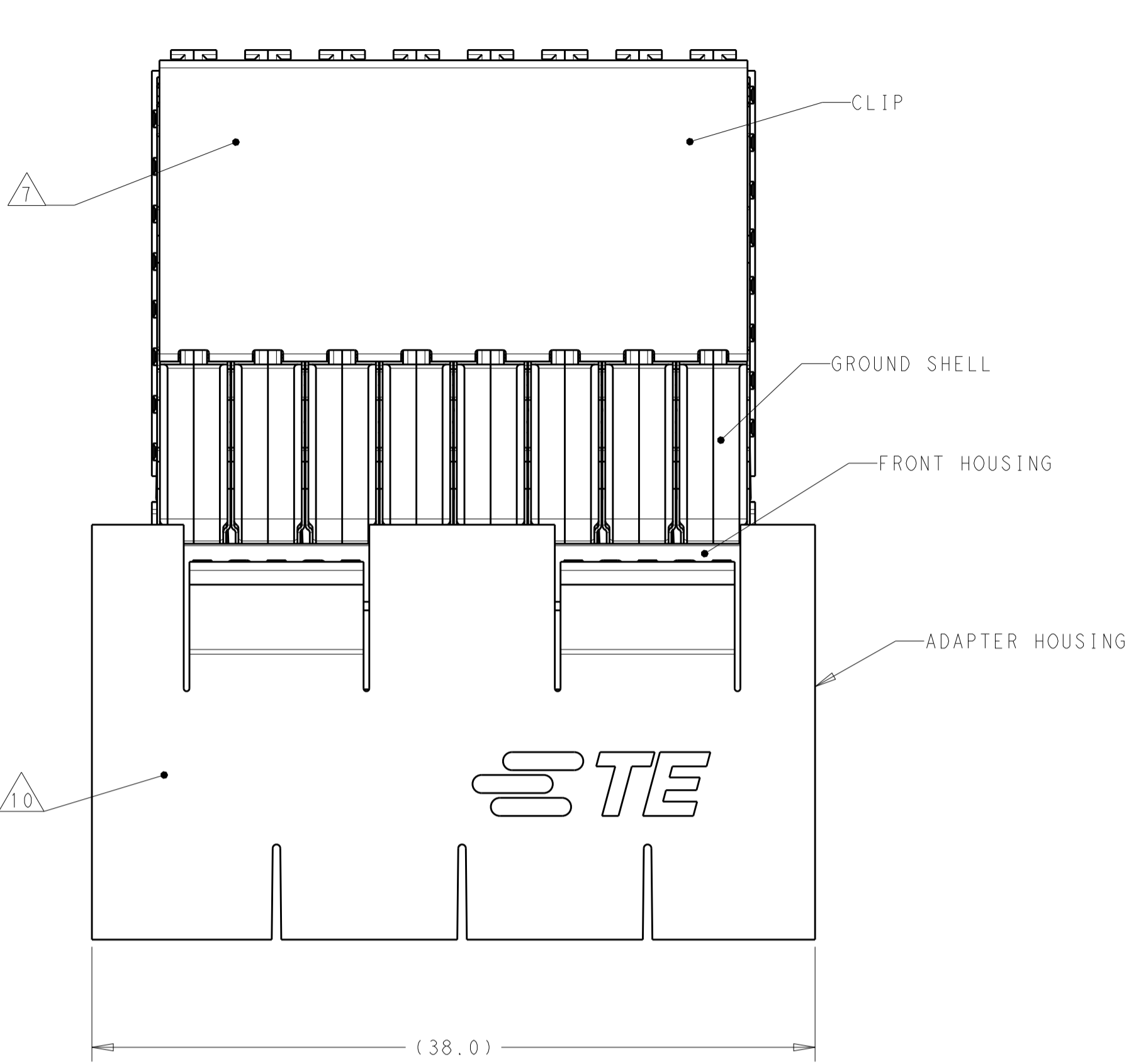
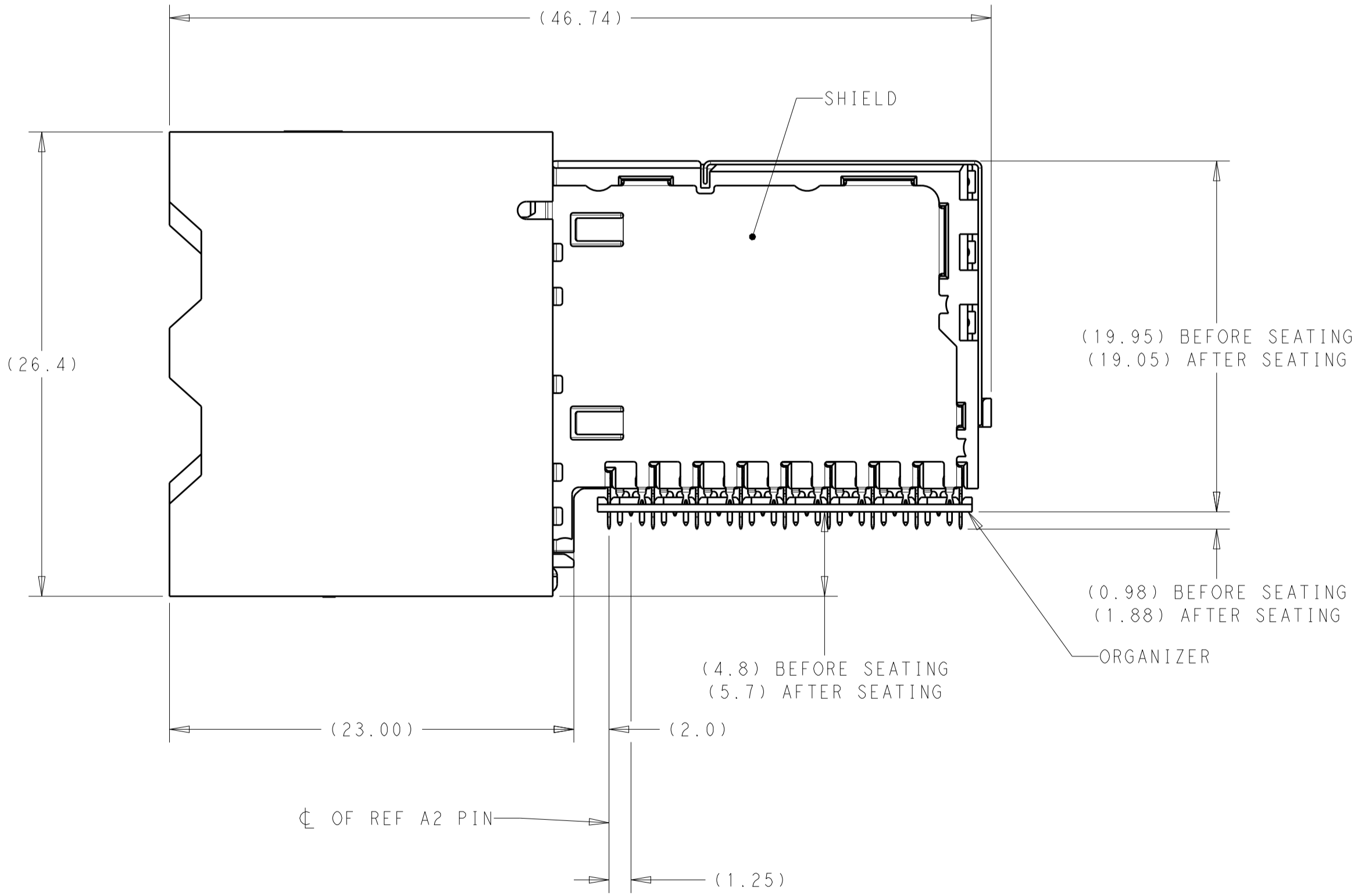
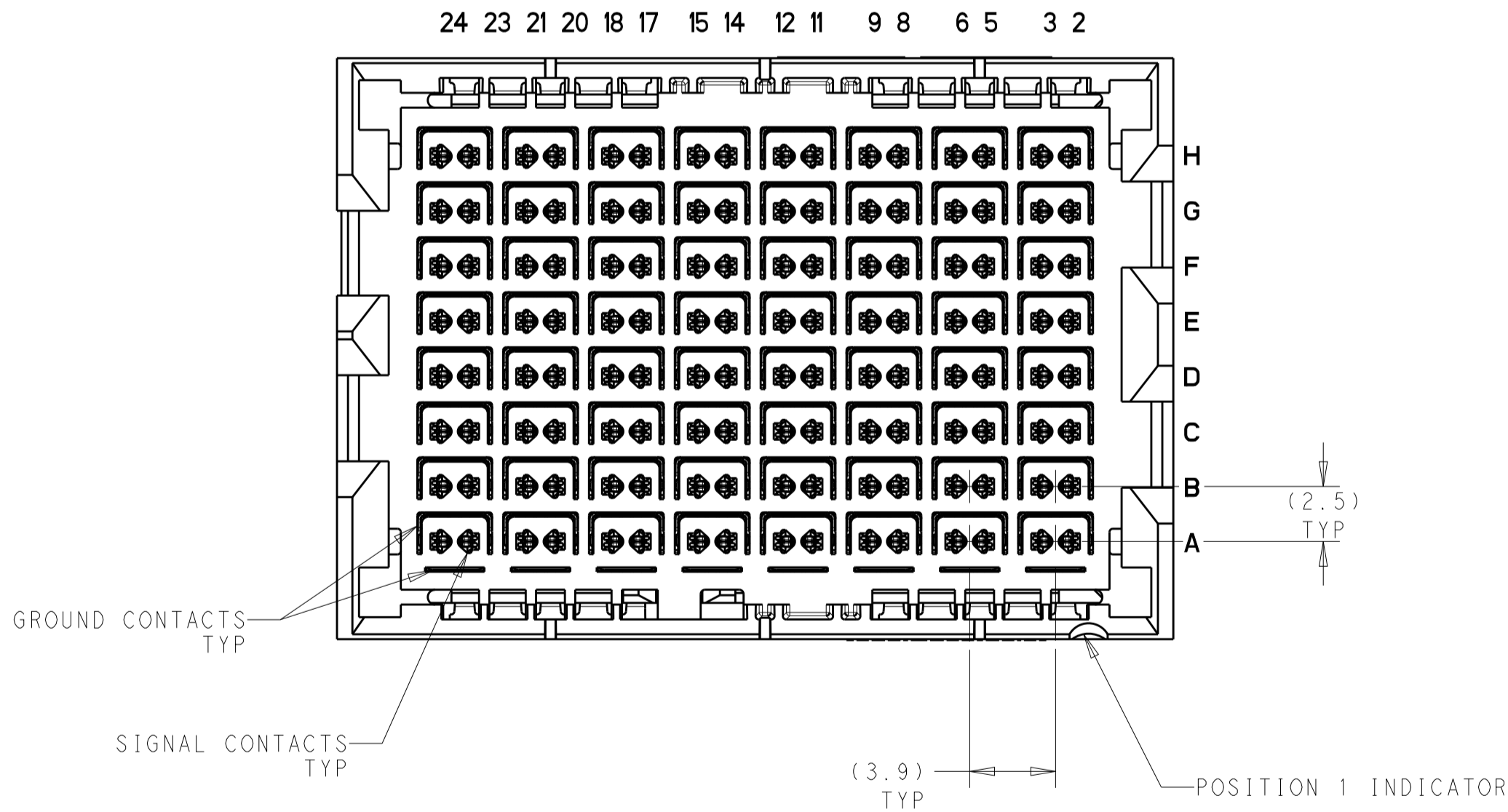


REVISIONS					
P	LTR	DESCRIPTION	DATE	DWN	APVD
1		PROPOSED	07APR2014	MS	JM
2		REVISED	08OCT2014	JM	JM
3		REVISED MARKING NOTE 10, UPDATED HOUSING	27MAY2015	JM	NS
4		PIR REC REVISED, 108 REVISED	21JUN2016	NWS	DS



SCALE 2:1

- CONTACTS AND SHIELDS - COPPER ALLOY
CLIP - STAINLESS STEEL
HOUSINGS, GROUND SHELLS, AND ORGANIZER - THERMOPLASTIC, UL 94V-0, BLACK
- CONFORMS TO THE REQUIREMENTS OF TE PRODUCT SPECIFICATION 108-32112
BASED ON TELCORDIA GR-1217-CORE FOR SYSTEM QUALITY LEVEL III,
APPLICATIONS IN CONTROLLED ENVIRONMENTS (CENTRAL OFFICE).
COMPLIANT PIN AREA: 0.5µm MIN MATTE TIN.
- GROUND PLATED THRU HOLE REQUIREMENTS:
FINISHED HOLE = $\varnothing 0.37 \pm 0.05$
HOLE SIZE PRIOR TO PLATING = $\varnothing 0.450 \pm 0.025$
COPPER THICKNESS = 0.025 MIN
IMMERSION TIN IF APPLICABLE = (0.00095)
- SIGNAL PLATED THRU HOLE REQUIREMENTS:
FINISHED HOLE = $\varnothing 0.29 \pm 0.05$
HOLE SIZE PRIOR TO PLATING = $\varnothing 0.368 \pm 0.025$ (#79 DRILL)
COPPER THICKNESS = 0.025 MIN
IMMERSION TIN IF APPLICABLE = (0.00095)
- SI VIA PLATED THRU HOLE REQUIREMENTS:
FINISHED HOLE = ($\varnothing 0.22$)
HOLE SIZE PRIOR TO PLATING = $\varnothing 0.300 \pm 0.025$
COPPER THICKNESS = 0.025 MIN
IMMERSION TIN IF APPLICABLE = (0.00095)
- SI VIAS & SIGNAL HOLES:
PTH DIMENSIONS APPLY TO THE TOP 1.00mm OF THE PCB THICKNESS FROM THE
CONNECTOR MOUNTING SIDE.
GROUND HOLES:
PTH DIMENSIONS APPLY TO THE TOP 1.25mm OF THE PCB THICKNESS FROM THE
CONNECTOR MOUNTING SIDE.
- CONNECTOR MARKED WITH PART NUMBER, DATE CODE, AND "85 OHM" IN
APPROXIMATE AREA SHOWN.
- DATUMS AND BASIC DIMENSIONS ESTABLISHED BY CUSTOMER
- APPLIES TO FINISHED HOLE DIAMETER.
- CONNECTOR MARKED WITH ASSEMBLY PART NUMBER, DATE CODE, AND "85 OHM"
IN APPROXIMATE AREA SHOWN.



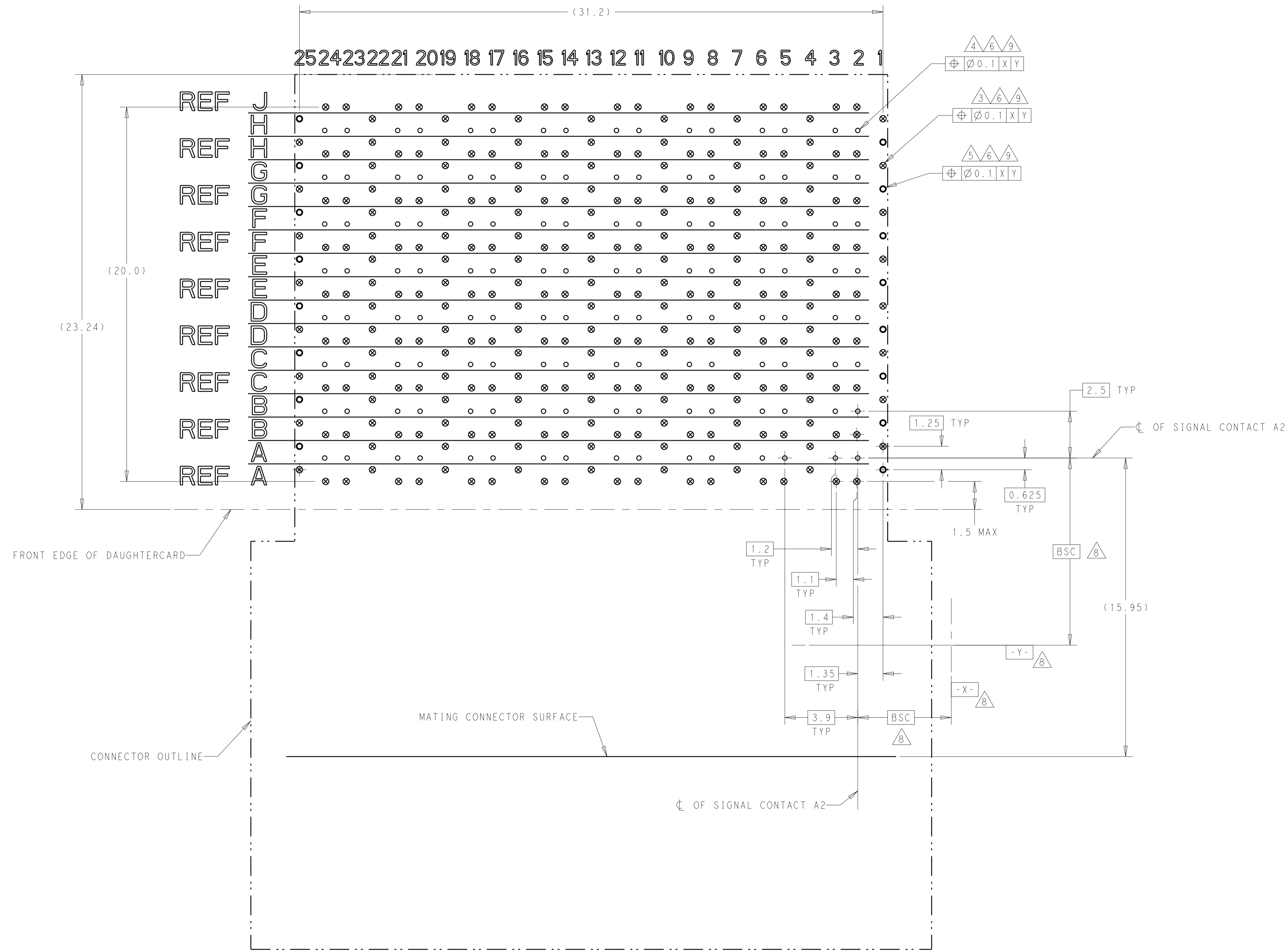
2287841-1
PART NUMBER

PRELIMINARY
NOT RELEASED FOR PRODUCTION

THIS PRODUCT HAS NOT
COMPLETED VALIDATION AND
QUALIFICATION TESTING

THIS DRAWING IS A CONTROLLED DOCUMENT.		DWN	J. McCLINTON	26SEP2014			
		CHK	J. McCLINTON	26SEP2014			
		APVD	J. McCLINTON	26SEP2014	<div>TE Connectivity</div> <div>FLYNNARY</div> <div>RIGHT ANGLE ADAPTER ASSEMBLY, 8 PAIR 8 COLUMN, 85 OHM DPO, STRADA WHISPER</div>		
DIMENSIONS:		TOLERANCES UNLESS OTHERWISE SPECIFIED:		NAME			
mm		0 PLC ±		PRODUCT SPEC			
		1 PLC ±		APPLICATION SPEC			
		2 PLC ±0.13		114-32120			
		3 PLC ±		WEIGHT			
		4 PLC ±		A1			
		ANGLES		CAGE CODE			
		FINISH		DRAWING NO			
MATERIAL				C=2287841			
				Customer Drawing			
				RESTRICTED TO			
				SCALE 4:1			
				SHEET 1 OF 2			
				REV 4			

REVISIONS					
P	LTR	DESCRIPTION	DATE	DWN	APVD
-	-	SEE SHEET 1	-	-	-



RECOMMENDED PCB LAYOUT
SINGLE CONNECTOR (NON-STACKING)
COMPONENT SIDE SHOWN
SCALE 8:1

- = SIGNAL
- ⊗ = GROUND
- ⊗ = SIGNAL INTEGRITY VIA TO GROUND

PRELIMINARY
NOT RELEASED FOR PRODUCTION

THIS PRODUCT HAS NOT
COMPLETED VALIDATION AND
QUALIFICATION TESTING

THIS DRAWING IS A CONTROLLED DOCUMENT.		DWN J. McCLELLAN 26SEP2014	TE Connectivity	
DIMENSIONS:		CHK J. McCLELLAN 26SEP2014		
mm	TOLERANCES UNLESS OTHERWISE SPECIFIED:	APVD J. McCLELLAN 26SEP2014	NAME RIGHT ANGLE ADAPTER ASSEMBLY, 8 PAIR 8 COLUMN, 85 OHM DPO, STRADA WHISPER	
	0 PLC ± 1 PLC ± 2 PLC ±0.13 3 PLC ± 4 PLC ±	PRODUCT SPEC	SIZE A1	
MATERIAL	ANGLES FINISH	APPLICATION SPEC	CAGE CODE C=2287841	
-	-	WEIGHT	RESTRICTED TO	
-	-	Customer Drawing	SCALE 1:1 SHEET 2 OF 2 REV 4	