

LDC	DIST	REVISIONS			
P	LTR	DESCRIPTION	DATE	DWN	APVD
-	-	A1	ECR-16-007597	13JUN16	LS LB

ELECTRIC CRIMPING MACHINE, AT- 300

BASIC MACHINE WITHOUT CRIMP HEAD ADAPTER /

Basismaschine ohne Crimpkopf Adapter



Basismaschine AT- 300 / Basic machine AT- 300

Bestehend aus / Consists of:

1. Basismaschine / Base machine AT-300,
2. Sicherheitsfußschalter mit Schutzhaube und Anschlussleitung / Safety foot pedal with protective cover and connection cable
TE P/N 5-523159-8
3. EU Anschlusskabel / EU Connection cable
TE P/N 9-523648-8
4. US Anschlusskabel / US Connection cable
TE P/N 9-523648-9

Folgende Dokumente sind beigefügt /
Following documentation are enclosed:

- Bedienungsanleitung in EN/DE / Operation manual (DE/EN)
IS412-94328 / TE P/N 3-744017-7

TECHNISCHE DATEN / TECHNICAL DATA

Maße / Dimensions	495 x 320 x 240 mm
Gewicht / Weight	17 kg
Netzspannung / Voltage	230 V or 115 V umschaltbar/changeable
Crimpkraft / Crimp Force	max. 15 kN
Hubweg / Stroke Distance	ca. 12 mm
Crimpgeschwindigkeit / Crimping Speed	10 mm/sec
Lärmpegel / Noise Level	69 dB(A)
Maschinenzykluszeit / Cycle Time	1,4 sec

Optionen / Options

POS	BESCHREIBUNG / DESCRIPTION	ANWENDUNGS BEREICH / APPLICATION AREA	TE P/N	COMMENT
1	SDE- ADAPTER, AT-300	zur Aufnahme von Matrizensätze/ for mounting die sets	1673663-2	-
2	HTV10- ADAPTER, AT-300	zur Aufnahme von Crimpköpfen/ for mounting crimp heads	1579000-4	-
3	ERGOGRIMP- ADAPTER, AT-300	zur Aufnahme von Matrizensätze/ for mounting die sets	1-1579000-8	-
4	CSE30- ADAPTER, AT-300	zur Aufnahme von Matrizensätze/ for mounting die sets	3-1579000-3	-
5	CERTI-CRIMP II ADAPT,AT-300	zur Aufnahme von Crimpköpfen/ for mounting crimp heads	1213860-1	US Version Instruction sheet 408-10021
6	LARGE DIE ADAPTER, AT-300,	zur Aufnahme von Matrizensätze/ for mounting die sets	1901556-1	US Version Instruction sheet 408-10284

EIGENSCHAFTEN

- + Höchste Präzision durch Linearcrimptechnik der Werkzeugköpfe
- + Einfacher und schneller Werkzeugkopfwechsel ohne Justage
- + Werkzeugkopfaufnahme 360° drehbar, Einrastpunkte alle 45°
- + Sicherheitsfußschalter
- + Einfache Bedienung durch Touch Display mit selbsterklärenden Symbolen
- + Schlüsselschalter mit Einrichtungsfunktion
- + Einstellbarer Doppelhub (1. Hub einstellbar)
- + Rückstelltaster zum Lösen der Gesenke im Fall einer Blockade (Notstromversorgung garantiert Funktionalität auch bei Stromausfall)
- + Integrierter Stückzähler

FEATURES

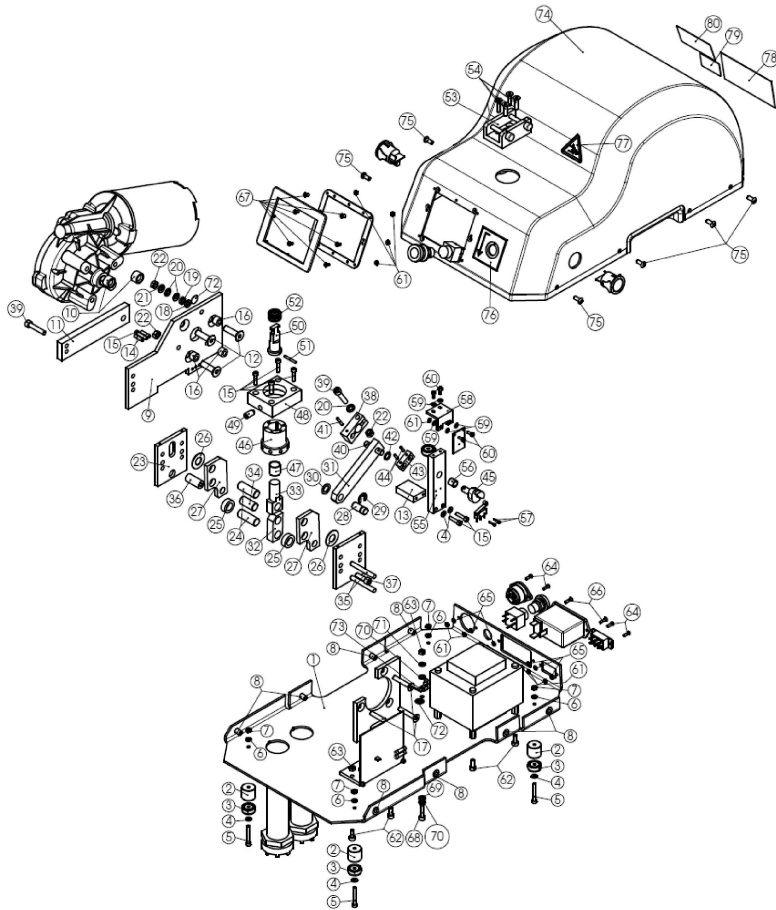
- + Highest precision due to parallel action technology of the tool heads
- + Easy and quick exchange of the tool heads without adjustments
- + Tool holding device turnable through 360°, engagement points every 45°
- + Safety foot pedal
- + Simple operation by a touch display with self-explanatory symbols
- + Key switch with set-up function
- + Adjustable double step mode (1. step adjustable)
- + Release button to open the dies in the case of a blockage. (Battery backup guaranties its function during a power failure)
- + Integrated piece counter

DIMENSIONS:		TOLERANCES UNLESS OTHERWISE SPECIFIED:		THIS DRAWING IS A CONTROLLED DOCUMENT.		TE Connectivity	
mm		0 PLC	± -	DWN	07OCT2015	ELECTRIC CRIMPING MACHINE, AT- 300	
	1 PLC	± -	CHK	L. Sandhu	31MAR2016	Elektrische Crimpmaschine, AT- 300	
	2 PLC	± -	L. Bauer			SIZE	CAGE CODE
	3 PLC	± -	L. Bauer			A3	00779
	4 PLC	± -				C=539630-2	DRAWING NO
MATERIAL		FINISH		APVD		RESTRICTED TO	
				L. Bauer		-	
				PRODUCT SPEC		SCALE	
				APPLICATION SPEC		SHEET	
				WEIGHT		1 OF 3	
				17kg		REV	
				CUSTOMER DRAWING		A1	


LDC	DIST	REVISIONS			
P	LTR	DESCRIPTION	DATE	DWN	APVD
-	-	SEE SHEET 1	-	-	-

ELECTRIC CRIMPING MACHINE, AT- 300

EXPLODED VIEW WITH PART LIST / Explosionsdarstellung mit Stückliste



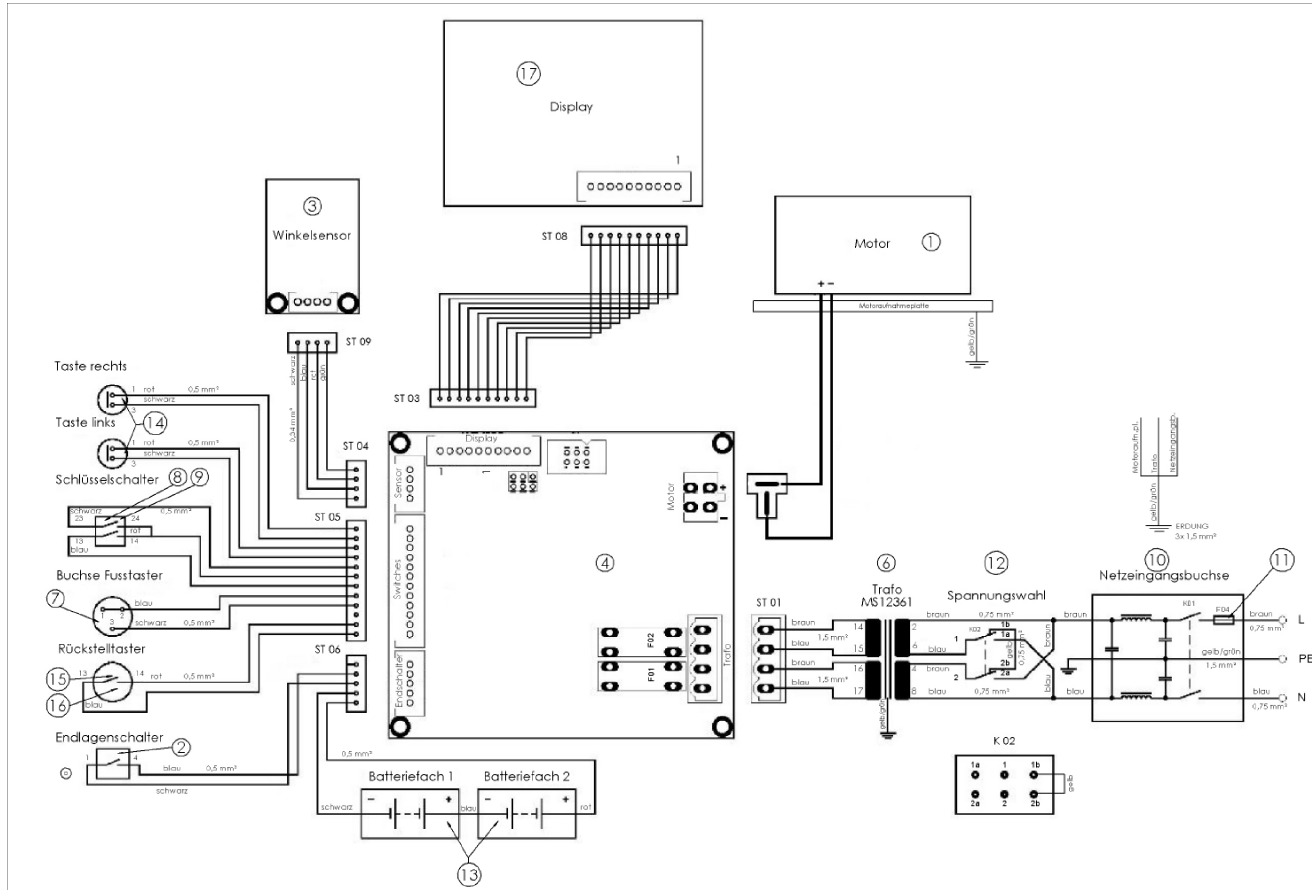
POS	QTY	TE P/N	DESCRIPTION	SPARE PART	POS	QTY	TE P/N	DESCRIPTION	SPARE PART
1	1	523648-1	HOUSING		41	1	4-523648-1	CYLINDER PIN 3M6X20	
2	4	523648-2	FOOT 20/4,3X18 LG	x	42	1	4-523648-2	DISTANCE PLATE 12,5/8,2X1,0	
3	4	523648-3	FOOT, MEASURING DEVICE A20 20X4X7,5 LG	x	43	1	4-523648-3	TRANSFER LEVER	
4	6	523648-4	DISK A4,3	x	44	2	4-523648-4	CYLINDER PIN 3M6X12	
5	4	523648-5	HEX SOCKET SCREW M4X30	x	45	1	4-523648-5	SEGMENT AXIS	
6	4	523648-6	SERRATED WASHER I 4,3	x	46	1	4-523648-6	PUSH ROD GUIDANCE	
7	4	523648-7	HEX NUT M4	x	47	1	4-523648-7	DU-SOCKET MB 1415	
8	8	523648-8	BLIND RIVET NUT BN4575-M5		48	1	4-523648-8	RECEIVING-DOWN HOLDER	
9	1	523648-9	MOTOR HOLDING PLATE		49	1	4-523648-9	SPRINGY PRESSURE PIECE	
10	2	1-523648-0	DISTANCE BUSH 16/8,2X10		50	1	5-523648-0	PRESSURE ROD TOP	x
11	1	1-523648-1	REINFORCING BAR		51	1	5-523648-1	CYLINDER PIN 3M6X24	x
12	3	1-523648-2	HEX SOCKET COUNTERSUNK HEAD SCREW M8X30		52	1	5-523648-2	PRESSURE PIN NO. 244	x
13	1	1-523648-3	BRIDGE		53	1	5-523648-3	TOOL HOLDING DEVICE, COMPLETE	x
14	2	1-523648-4	CYLINDER PIN 4M6X18		54	4	5-523648-4	HEX SOCKET COUNTERSUNK HEAD SCREW M5X20	x
15	7	1-523648-5	HEX SOCKET SCREW M4X18		55	1	5-523648-5	BRIDGE	
16	3	1-523648-6	SOCKET 12,0/6,2X8,0		56	1	5-523648-6	DU-SOCKET MB 0810	
17	3	1-523648-7	HEX SOCKET COUNTERSUNK HEAD SCREW M6X35		57	2	5-523648-7	HEX SOCKET SCREW M2X10	
18	1	1-523648-8	SERRATED WASHER A 6,4		58	1	5-523648-8	SEGMENT BOARD HOLDING PLATE	
19	1	1-523648-9	HEX NUT B M6		59	6	5-523648-9	DISK A3,2	
20	3	2-523648-0	DISK B6,4		60	4	6-523648-0	HEX SOCKET SCREW M3X8	
21	1	2-523648-1	SPRING RING		61	14	6-523648-1	HEX NUT M3	
22	4	2-523648-2	HEX NUT M6		62	6	6-523648-2	HEX SOCKET SCREW M5X12	
23	2	2-523648-3	KNEE LEVER GUIDANCE		63	3	6-523648-3	HEX NUT M5	
24	2	2-523648-4	JOINT BOLT 12X34		64	4	6-523648-4	HEX. LENS HEAD SCREW M3X10	
25	2	2-523648-5	DISTANCE BUSH		65	6	6-523648-5	SERRATED WASHER A 3,7	
26	2	2-523648-6	DISTANCE PLATE 25,0/12,2X1,0		66	2	6-523648-6	HEX SOCKET COUNTERSUNK HEAD SCREW M3X12	
27	2	2-523648-7	ACTUATING LEVER		67	6	6-523648-7	HEX SOCKET COUNTERSUNK HEAD SCREW M3X8	
28	1	2-523648-8	CONNECTING ROD BOLT		68	1	6-523648-8	HEX SOCKET SCREW M5X20	
29	1	2-523648-9	LOCK WASHER		69	1	6-523648-9	SERRATED WASHER A5,3	
30	1	3-523648-0	DISTANCE PLATE 16,0/10,2		70	2	7-523648-0	DISK B5,3	
31	1	3-523648-1	PRESSURE ROD		71	1	7-523648-1	SPRING RING	
32	1	3-523648-2	KNEE LEVER		72	2	7-523648-2	ADHESIVE LABEL PROTECTIVE CONDUCTOR	
33	1	3-523648-3	PRESSURE ROD BASE		73	1	7-523648-3	FLAT PLUG 3X6, 3X0,8	
34	1	3-523648-4	PRESSURE ROD BOLT		74	1	7-523648-4	HOUSING COMPLETE	x
35	2	3-523648-5	CYLINDER PIN 6M6X50		75	8	7-523648-5	HEX. LENS HEAD SCREW M5X12	x
36	1	3-523648-6	DISTANCE BUSH D12/M6 X26,5		76	1	7-523648-6	LABEL, RELEASE	x
37	1	3-523648-7	HEX SOCKET SCREW M6X20		77	1	7-523648-7	ADHESIVE LABEL, WARNING HAND INJURY	x
38	1	3-523648-8	CRANK		78	1	7-523648-8	ADHESIVE LABEL, WITHDRAW MAINS PLUG	x
39	2	3-523648-9	HEX SOCKET SCREW M6X30		79	1	7-523648-9	ADHESIVE LABEL, KEY SWITCH	x
40	1	4-523648-0	CRANK BOLT 8X33,5						

THIS DRAWING IS A CONTROLLED DOCUMENT.		DWN L. Sandhu 07OCT2015	 TE Connectivity
		CHK L. Bauer 31MAR2016	
DIMENSIONS: mm		APVD L. Bauer 31MAR2016	ELECTRIC CRIMPING MACHINE, AT- 300 Elektrische Crimpmaschine, AT- 300
TOLERANCES UNLESS OTHERWISE SPECIFIED: 0 PLC ± - 1 PLC ± - 2 PLC ± - 3 PLC ± - 4 PLC ± - ANGLES ± -		NAME L. Bauer	
MATERIAL		PRODUCT SPEC -	RESTRICTED TO
		APPLICATION SPEC -	
		WEIGHT 17kg	SIZE A3
		CAGE CODE 00779	
		DRAWING NO C=539630-2	
		CUSTOMER DRAWING	
		SCALE	SHEET 2 OF 3
		REV A1	


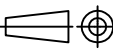
LDC		DIST		REVISIONS			
P	LTR	DESCRIPTION		DATE	DWN	APVD	
-	-	SEE SHEET 1		-	-	-	

ELECTRIC CRIMPING MACHINE, AT- 300

CIRCUIT DIAGRAM / Schaltplan



POS	QTY	TE P/N	DESCRIPTION	SPARE PART
1	1	8-523648-1	MOTOR DOGA 259	X
2	1	8-523648-2	LIMIT SWITCH	
3	1	8-523648-3	POSITION BOARD	
4	1	8-523648-4	CONTROL BOARD, COMPLETE	X
6	1	8-523648-6	TRANSFORMER MSE 96LP_59.7	
7	1	8-523648-7	SOCKET CONNECTOR TYPE 690	
8	1	8-523648-8	SET-UP KEY SWITCH	X
9	1	8-523648-9	SWITCHING ELEMENT, KEY SWITCH	
10	1	9-523648-0	MAIN FILTER, INCL. SWITCH	X
11	3	9-523648-1	FUSE 5X20 6.3A SLOW BLOW DIN41662	
12	1	9-523648-2	VOLTAGE SELECTOR 2-POL.110_220V	
13	2	9-523648-3	BATTERY COMPARTMENT 2X BABY TYPE C	
14	2	9-523648-4	MAIN PRESSURE BUTTON ROUND	X
15	1	9-523648-5	RELEASE BUTTON	X
16	1	9-523648-6	SWITCHING ELEMENT-RELEASE BUTTON	
17	1	9-523648-7	DISPLAY FT800, INCL. FRAME	X

THIS DRAWING IS A CONTROLLED DOCUMENT.		DWN L. Sandhu	07OCT2015	 TE Connectivity
		CHK L. Bauer	31MAR2016	
DIMENSIONS: mm		TOLERANCES UNLESS OTHERWISE SPECIFIED:		ELECTRIC CRIMPING MACHINE, AT- 300 Elektrische Crimpmaschine, AT- 300
		0 PLC ± - 1 PLC ± - 2 PLC ± - 3 PLC ± - 4 PLC ± - ANGLES ± -		
MATERIAL		FINISH		APVD L. Bauer
				PRODUCT SPEC
				APPLICATION SPEC
				SIZE A3
				CAGE CODE 00779
				DRAWING NO G=539630-2
				RESTRICTED TO
				WEIGHT 17kg
				CUSTOMER DRAWING
				SCALE
				SHEET 3 OF 3
				REV A1