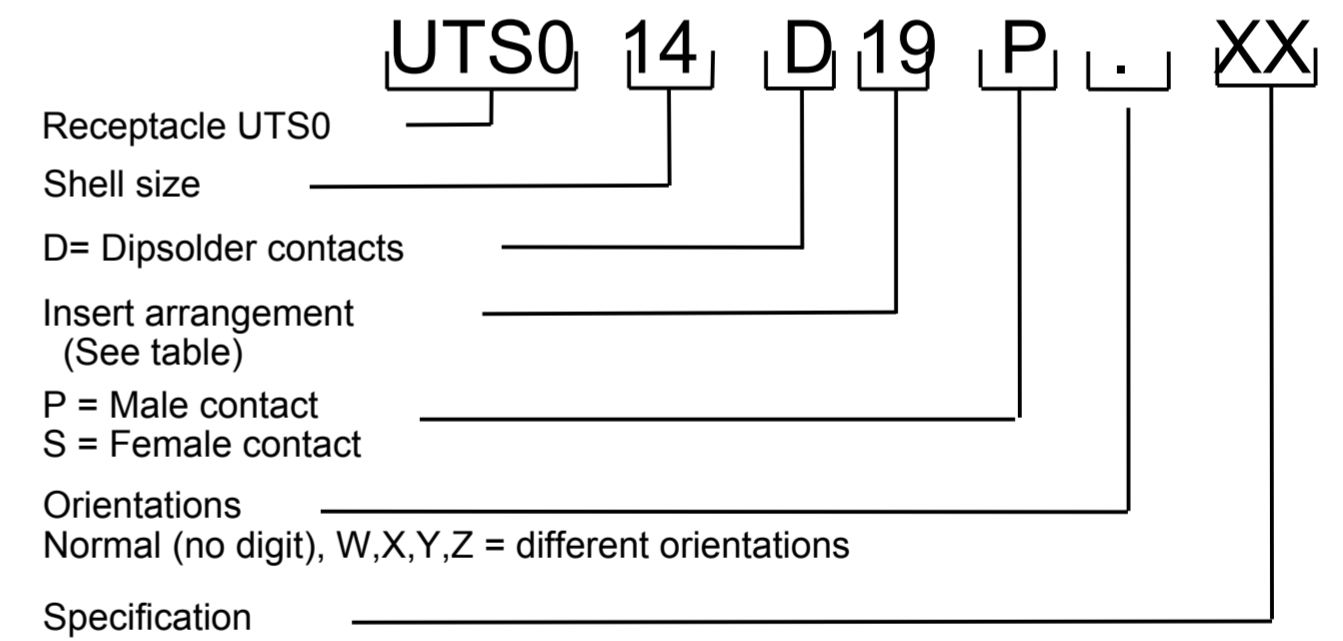


Shell size	I (male connector)	J (female connector)
8	9.76/11.86 for layout 8-2/8-3/8-4 10.78/13.09 for layout 8-3A/8-98/8-33	9.55/11.71 for layout 8-2/8-3/8-4 10.82/12.79 for layout 8-3A/8-98/8-33
10	8.1/10.5	8.15/10.15
12	8.1/10.5 7.2/9.3 for layout 12-14	8.15/10.15 7.3/9.3 for layout 12-14
14	8.1/10.5	8.15/10.15

SHELL SIZE	A ± 0.25	B ± 0.25	C Maxi	D ± 0.15	Ø E ± 0.15	F Maxi	G ± 0.25	H ± 0.10	Thread
8	21.00	15.10	21.50	2.30	11.90	11.70	15.10	12.50	7/16 28 UNEF Class 2A
10	23.80	18.30	21.50	2.30	14.90	11.70	18.30	15.10	9/16 24 UNEF Class 2A
12	26.20	20.60	21.50	2.30	18.95	11.70	20.60	18.20	11/16 24 UNEF Class 2A
14	28.60	23.00	21.50	2.30	22.15	11.70	23.00	21.40	13/16 20 UNEF Class 2A



MATERIAL :

Shell: Polyamid UL94 V-0
 Insert: Polychloroprene
 Seal gasket : Sealing IP68/69K : Silicone
 O'seal : Nitril
 Contact: brass + gold plated

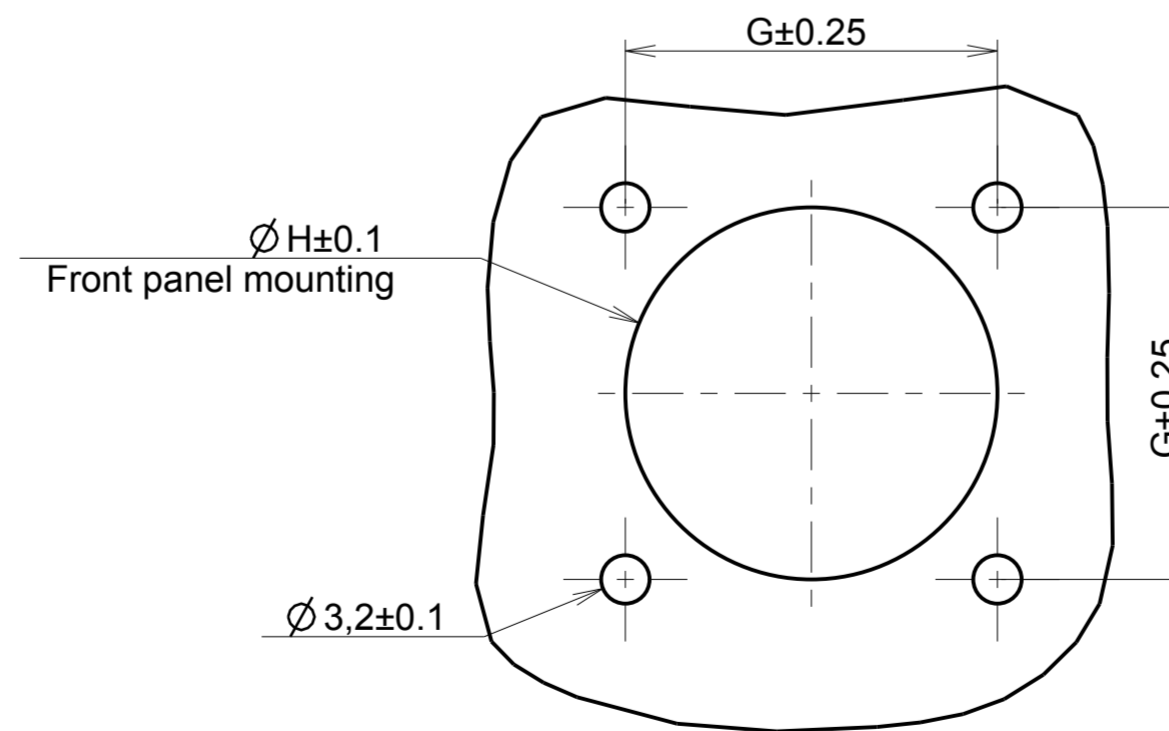
PERFORMANCE CHARACTERISTICS :

Operating temperature: -40°C up to 105°C
 Insulation resistance: 5000 MΩ min
 Test potential: 1500Vrms for #20 layout
 Corrosion salt spray: 500 hours
 Durability: 250 matings and unmatings
 Sealing in mated and unmated conditions:
 -IP68 1 bar during 1 week : immersion under 10 m of water. (IEC 60529)
 -IP69K : exposure to high pressure water of cleaning equipment (DIN 40050)

NOTE:

Insert arrangements : refer to C144-UTS1-A

CUT PANEL



CUSTOMER DRAWING

a	12/05/11	New drawing	21774
ISS	DATE	Latest modification - by:	MOD N°
Designed by: J.FEURPRIER		Date: 11/05/11	CUSTOMER DRAWING
TITLE		RECEPTACLE WITH DIPSOLDER CONTACTS UTS HI SEAL	
Scale	3/1	General linear Tolerances: ± 0.1	NPRDS / PROJECT UTS
		WWW.SOURIAU.COM	This document is the property of SOURIAU. It must not be reproduced or communicated without permission.
FORMAT	A2	SOURIAU DRG N° C143-UTS1-A	SHEET 1 / 1