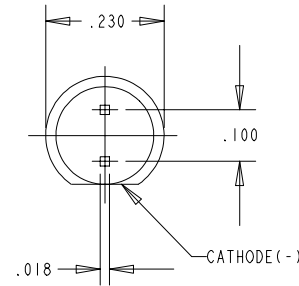
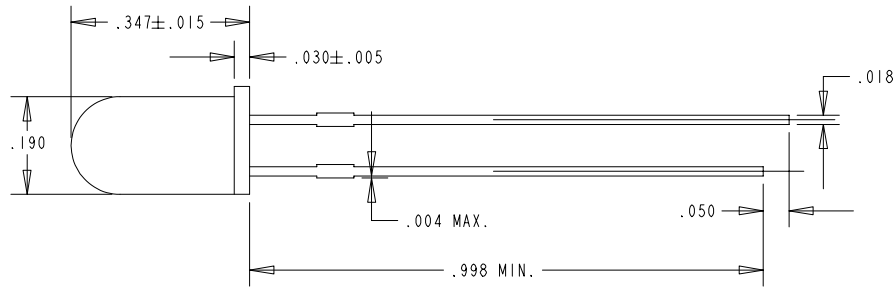


REV.	ECN NO.	REVISIONS	DRN.	CKD.	APP.	DATE
A		NEW RELEASE	YIS			



LED CHARACTERISTICS	MIN.	TYP.	MAX.	UNITS	TEST CONDITIONS
LUMINOUS INTENSITY	111.7	265.0	418.3	mcd	$I_F = 20 \text{ mA}$
FORWARD VOLTAGE	1.5	2.2	3.0	V	$I_F = 20 \text{ mA}$
REVERSE VOLTAGE	5.0			V	$I_F = 100 \text{ } \mu\text{A}$
PEAK WAVELENGTH		565		nm	
DOMINANT WAVELENGTH	562	569	576	nm	
CAPACITANCE		18.0		pF	$V_F = 0; f = 1 \text{ MHz}$
VIEWING ANGLE $2\theta$ 1/2		24.0		DEG.	

NOTES:

1. GREEN TINTED DIFFUSED EPOXY.
2. AN EPOXY MENISCUS MAY EXTEND ABOUT 1 mm (.040) DOWN THE LEAD.
3. LEADS - MILD STEEL.
4. DIALIGHT PART NUMBER: 521-9465

ABSOLUTE MAXIMUM RATINGS		UNITS
AVERAGE FORWARD CURRENT	25	mA
PEAK FORWARD CURRENT	90	mA
TRANSIENT FORWARD CURRENT (10 $\mu\text{s}$ PULSE)	500	mA
LEAD SOLDERING TEMPERATURE FOR 5 SEC.	260	$^{\circ}\text{C}$
OPERATING TEMPERATURE	-20 TO +100	$^{\circ}\text{C}$
STORAGE TEMPERATURE	-55 TO +100	$^{\circ}\text{C}$

THIS DRAWING AND THE CONTENTS HEREIN ARE CONFIDENTIAL AND THE SOLE PROPERTY OF DIALIGHT. REPRODUCTION OF THIS DRAWING OR CONSTRUCTION OF ANY PARTS WITHIN THIS DRAWING ARE FORBIDDEN WITHOUT THE WRITTEN CONSENT OF DIALIGHT.

SCALE: DRAWING SCALE ALL DIM'S IN: INCHES (MM)	DRAWING NUMBER C-17040	REV A
TOLERANCES: UNLESS OTHERWISE SPECIFIED FRACTIONS: $\pm 1/64$ DECIMALS (.XX): $\pm .01$ DECIMALS (.XXX): $\pm .005$ DECIMALS (.XXXX): $\pm .0005$ ANGLES: $\pm 1^{\circ}$	TITLE T-1 3/4 (5 mm) GREEN LED	
FINISH:	MATERIAL	
FSCM 83330	Dialight	1501 ROUTE 34 SOUTH FARMINGDALE, NJ 07727
	SHEET OF	FAMILY TABLE: