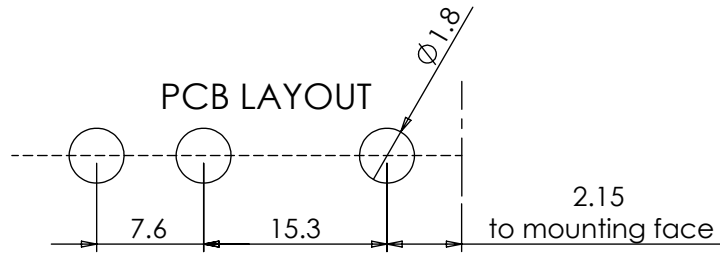
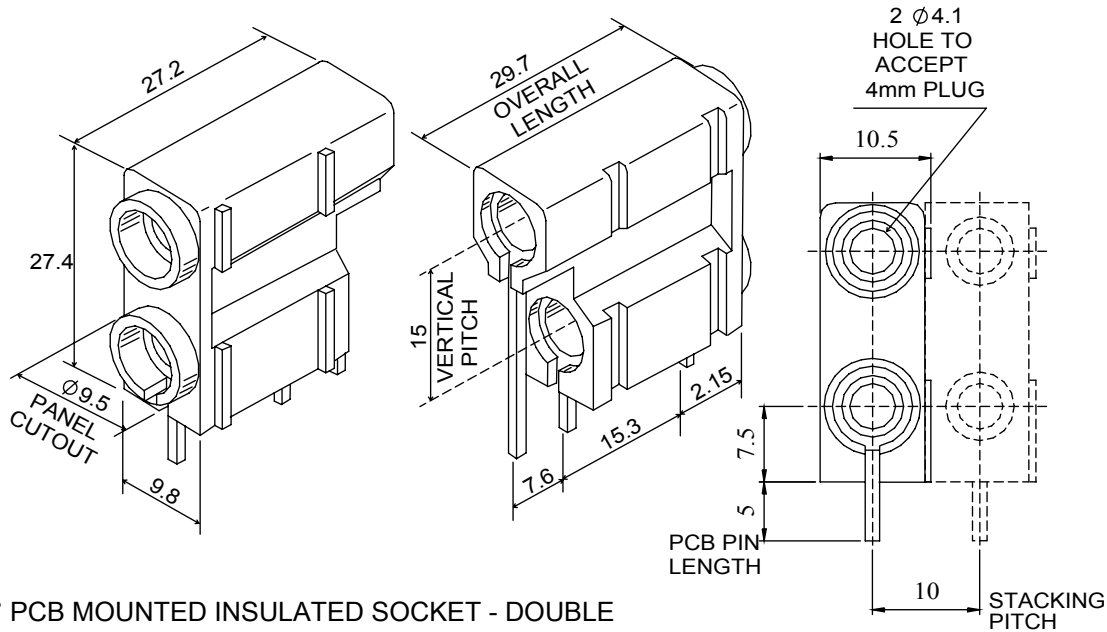


A double insulated 4mm socket, for direct mounting onto printed circuit boards. Has grooves in the outer acetal housing which provide side stacking alignment.

Component complies with 260° deg J-STD-075  
Non-IC Electronic Components Standard met PSL W4



Dimensions



90° PCB MOUNTED INSULATED SOCKET - DOUBLE

## Product information and Ratings - 572 Range = 4mm PCB Double Socket

<b>Insulant</b>	Acetal-LG chemical LUCCEL N127-LD/DN127-LD	Acetal - C27021 R
<b>Pin</b>	Brass silver plate	Brass Micron Silver Plated Deltron Spec 09-001
<b>Bush</b>	Brass silver plate	Brass Micron Silver Plated Deltron Spec 10-001
<b>Amps</b>	10A	
<b>Nominal working Voltage</b>	250 V RMS	
<b>Contact Resistance</b>	10mΩ	
<b>Maximum Temperature RTI</b>	+ 110°C	
<b>Minimum temperature</b>	- 25°C	
<b>Recommended Temperature</b>	10A'@55°C	
<b>Voltage Breakdown</b>	5000v	
<b>Conductor size</b>	1.5mm <sup>2</sup>	
<b>Colours</b>	ORDER CODE	
<b>Black</b>	572-0100	
<b>Blue</b>	572-0200	
<b>Brown</b>	572-0300	
<b>Green</b>	572-0400	
<b>Red</b>	572-0500	
<b>White</b>	572-0600	
<b>Yellow</b>	572-0700	

Tel No. +44(0)1724 273200 Website www.dem-uk.com

PROPRIETARY AND CONFIDENTIAL  
THE INFORMATION CONTAINED IN THIS DRAWING IS THE SOLE PROPERTY OF  
ALPHA 3 MANUFACTURING.  
ANY REPRODUCTION IN PART OR AS A WHOLE WITHOUT THE WRITTEN PERMISSION OF  
ALPHA 3 MANUFACTURING IS PROHIBITED.

UNLESS OTHERWISE SPECIFIED:  
DIMENSIONS ARE IN MILLIMETRES  
LINEAR TOLERANCE:  
NO DECIMAL PLACES ±0.5mm  
1 DECIMAL PLACE ±0.25mm  
2 DECIMAL PLACES ±0.125mm  
ANGULAR TOLERANCE: ±1°

FINISH -  
DEBURR AND BREAK SHARP EDGES -  
IF IN DOUBT ASK  
DO NOT SCALE DRAWING

THIRD ANGLE PROJECTION

DRAWN BY SPB  
APPROVED BY WC

SHEET 1 OF 1

SCALE 1:1

A4

TITLE GENERAL SPECIFICATION  
FOR  
572 SERIES

DRAWING NO. 572 SERIES

ISSUE 09

Release



DEM Manufacturing, Deltron Emcon House  
Hargreaves Way, Sawcliffe Ind. Park,  
Scunthorpe, North Lincolnshire, DN15 8RF, UK