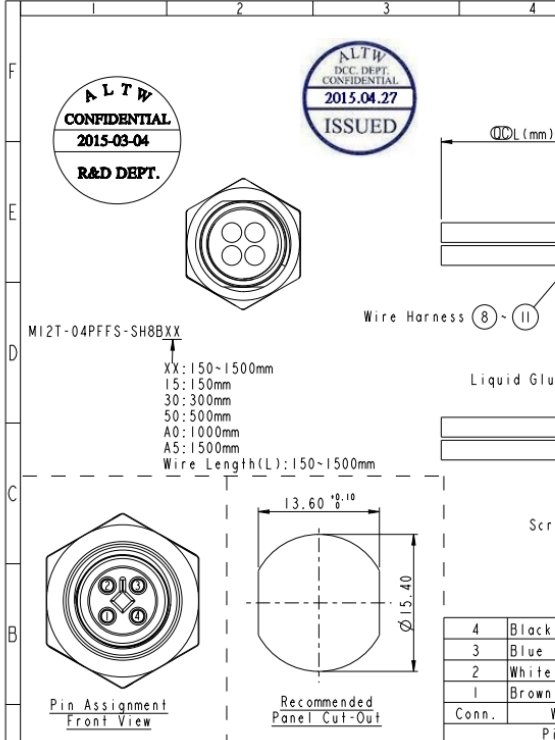


THIS DOCUMENT IS SUBJECT TO CHANGE WITHOUT NOTICE. IT IS CONFIDENTIAL AND A PROPERTY OF AMPHENOL LTW. DISCLOSED TO THIRD PARTY HAS TO BE AUTHORIZED BY AMPHENOL LTW.

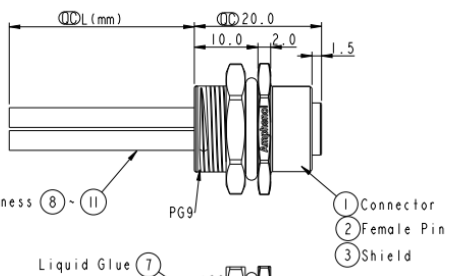
REV.	ECN NO.	DATE	SIGN	DESCRIPTION
A	Initial Release	2015/03/04	Cary	Change Rev. 01 to Rev.A



**ALTW**  
CONFIDENTIAL  
2015-03-04  
R&D DEPT.

**ALTW**  
DCC. DEPT.  
CONFIDENTIAL  
2015.04.27  
ISSUED

M12T-04PFFS-SH8BXX  
XX: 150-1500mm  
15: 150mm  
30: 300mm  
50: 500mm  
A0: 1000mm  
A5: 1500mm  
Wire Length(L): 150-1500mm



- Note:
- Ø Important Dimension.
  - Waterproof Rate: IP68.
  - IP68: 1M Depth Of Water In 24hours.
  - Housing: PA66, UL94V-0, Black.
  - Female Pin: Copper Alloy, Gold Plated.
  - Shield: Zinc Alloy, Nickel Plated.
  - Panel Nut: Zinc Alloy, Nickel Plated.
  - O-Ring1: Viton, Black.
  - O-Ring2: Viton, Green.
  - Wire Harness: UL1015 16AWG(1.5mm<sup>2</sup>).
  - Rated Voltage: 60V DC.
  - Rated Current at 40°C: 12A
  - Operation Temperature: -40~85°C.
  - For Panel Thickness Max 4.5mm.
  - Nut Torque: 4-6 Kgf.cm(0.4-0.6N.m).
  - Wire harness Tolerance: 150-300 ±15mm  
301-1000 ±20mm  
Over 1000 ±40mm

4	Black	黑
3	Blue	藍
2	White	白
1	Brown	棕
Conn.	Wire Color	Pin Out

UNIT: mm	TITLE	ITEM NO.	DRAWN BY	DATE
TOLERANCE . ±0.25 .XX ±0.1 .XXX ±0.05 ANGLES ±1°	M12 T-Code 4Pin Female Type		Cary	2015-03-04
SCALE: 2:1	SIZE: A4	SHEET: 1 of 1	CHECKED BY: Yu Long	DATE: 2015-03-04
REV: A	REV: A.3	QC: Inspection item	APPROVED BY: Jerry	DATE: 2015-03-04
			CUSTOMER: ALTW	

**Amphenol LTW**  
安費諾亮泰企業股份有限公司