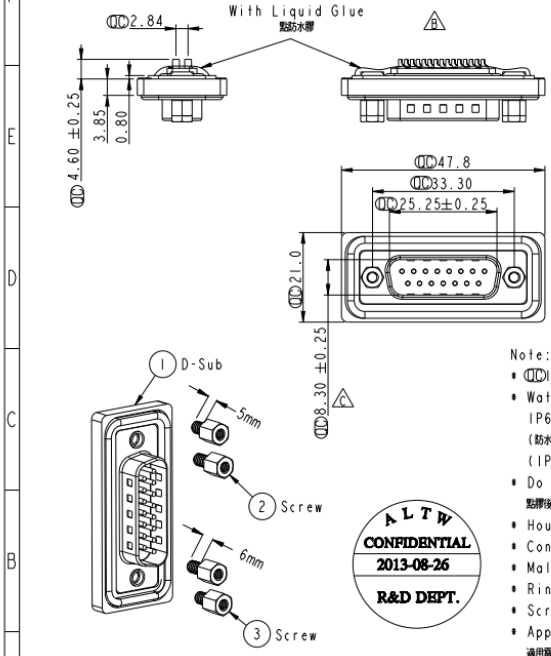


REV.	ECN NO.	DATE	SIGN	DESCRIPTION
B	LEN-970141	2009/07/28	Vicky	Remove Pin Dim.
C	LEN1390072	2013/08/26	Tony_leng	Change 8.36 To 8.30



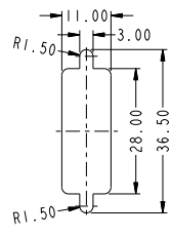
- Note:
- $\varnothing$  Important Dimension.
  - Waterproof Rate: IP68  
IP68: 1M of depth of water 24 hours  
(防水等級: IP68)  
(IP68: 1米水深24小時)
  - Do Mating Test After Glued  
點膠後, 須作對稱測試
  - Housing: Black, Nylon+GF.
  - Connector: Black, PBT.
  - Male Pin: Copper Alloy, Gold Plated.
  - Ring: Light Blue, Silicone.
  - Screw: Copper Alloy, Nickel Plated, #4-40 UNC.
  - Applicable Wire Range: 22AWG-26AWG.  
適用電線範圍: 22AWG-26AWG



Panel Thickness  
面板厚度  
X (Max.)

Screw L=5.0 For Panel Thickness  
Under 1.2mm  
適用板厚為 1.2mm 以下

Screw L=6.0 For Panel Thickness  
Between 1.2~2.0mm  
適用板厚為 1.2~2.0mm



Recommended Panel Cut-Out  
建議 鑽 孔 尺 寸

UNIT: mm		TITLE	D-SUB Conn.	ITEM NO.	SDB-15PMMS-SL8001	DRAWN BY	Tony_leng	DATE	2013-08-26
TOLERANCE		SCALE	Panel Screw DB15P M Conn. M Pin	REV. NO.	SDB-15PMMS-SL8001	CHECKED BY	Yulong	DATE	2013-08-26
.1	±0.25	REV.	C	REV.	A.4	APPROVED BY	Victor	DATE	2013-08-26
.XX	±0.1								
.XXX	±0.05								
ANGLES	±1°								

**Amphenol LTW**  
安費諾亮泰企業股份有限公司

THIS DOCUMENT IS SUBJECT TO CHANGE WITHOUT NOTICE. IT IS CONFIDENTIAL AND A PROPERTY OF AMPHENOL LTW. DISCLOSED TO THIRD PARTY HAS TO BE AUTHORIZED BY AMPHENOL LTW.